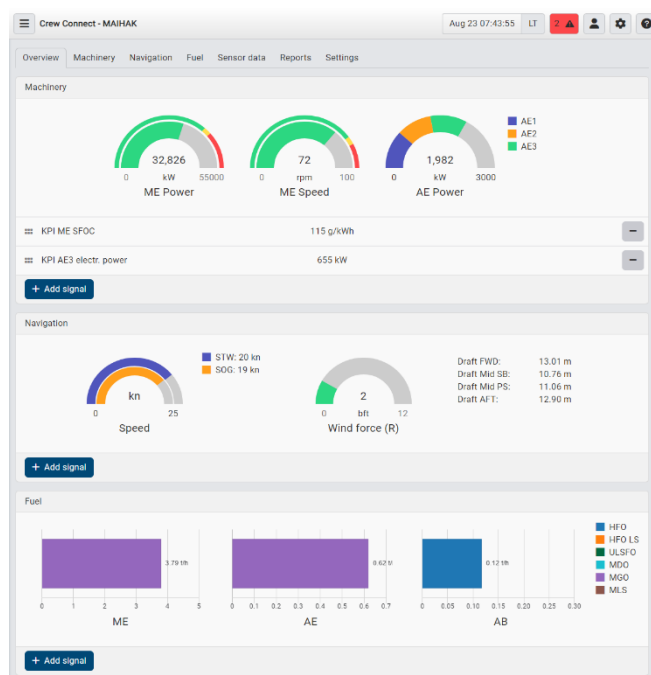


## APPLICATION DESCRIPTION

**Crew Connect – MAIHAK** is a web application that is used as monitoring and reporting tool on the Hoppe iPC HOMIP2 (HOPPE Embedded-iPC for System Control) together with other web applications. The graphical user interface of the application can be shown on any device on board that can display websites (PC, notebook, tablet, smartphone etc.) and has access to the HOMIP2 network. The application consists of several modules on which the live values, KPIs and historical values of the system are displayed. The application allows the generation of reports from historical data for reporting, planning and maintenance purposes.



## FACTS & FEATURES

- Ship wide access on tablets, computers and smartphones
- Live visualization of operational data and warning messages
- Noon-Report generation with nautical and machinery data and operational KPIs
- High resolution trend graphs for primary signals
- Add live values to customized containers
- Usage of Hoppe calculation and analysis library with running mode detection
- Fuel consumption matrix for fuel consumers and fuel grades
- Individual configuration and thresholds on user-level
- Usage of full Crew Connect functionalities like user management, day- and night view, remote updates

