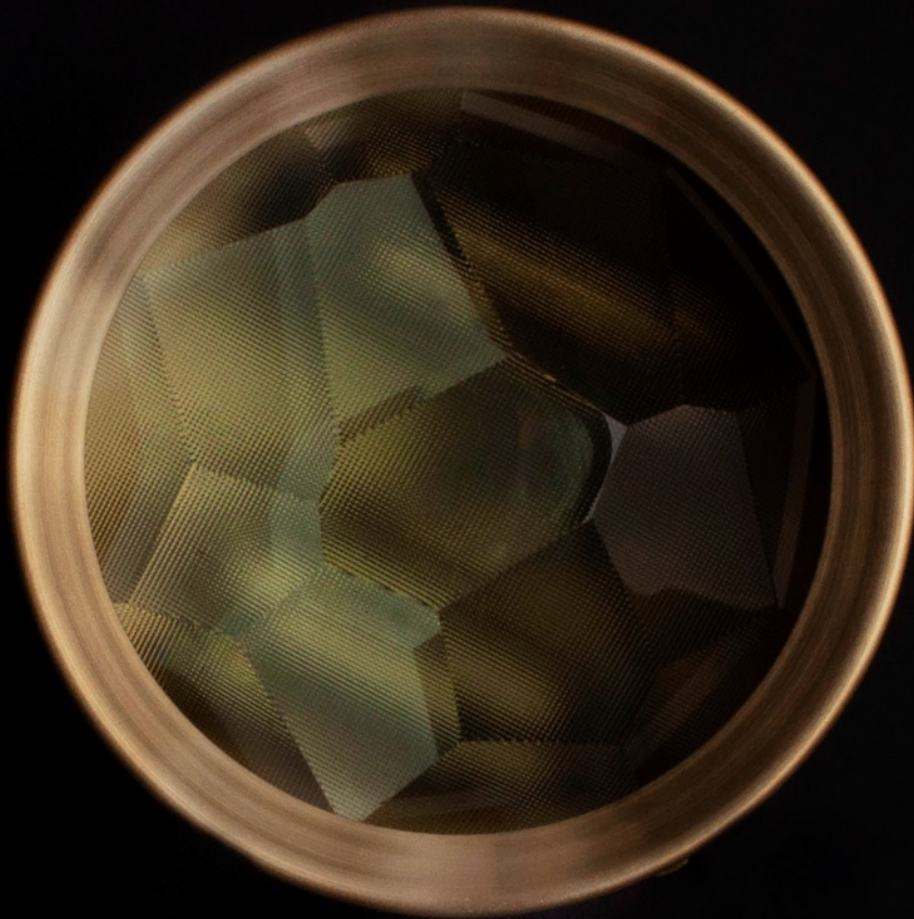


HALLWORTH



ODYSSEY

A collection of lighting inspired by celestial bodies, space, dreams, things far and away. 'Odyssey' is a continuous exploration into the intrigues of other worlds.

ASTRID

This hand-faceted lens can be used as a sconce or a flush-mounted fixture. Each is unique and as an individual component it represents the genesis of the constellation series. Astrid, however, stands alone as a single star.

SPECIFICATIONS

Materials: Patinated brass with perforations.
Hand-faceted glass lens.

Dimensions: 6" Dia | 5" D

Wattage: Max. 7.5 watts