



Client: Confidential

Disciplines: Architecture, Structure, Interiors & Landscape

Scale: 37 Gas Stations (68,000 sq. ft.)

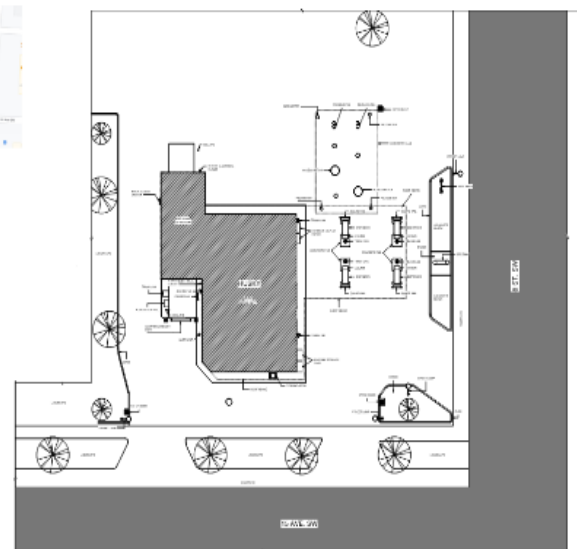
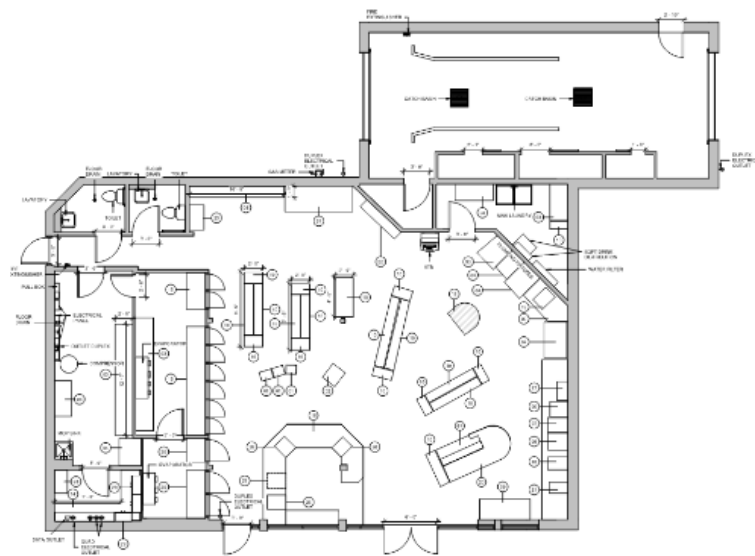
Team Size: 4-5 Engineers

Duration: 2 Months

Software: AUTODESK REVIT AUTODESK AUTOCAD AUTODESK RECAP

PROJECT OVERVIEW

- The client were looking for creating as-builts for the renovation and upgradation of their gas stations facilities.



SCOPE & DELIVERABLES

- Generate As-Built 3D models for 37 gas stations from Point Cloud and Matterport data.
- Drawings and CAD files of Site including Architecture, Structure, Interior, MEPF and site elements were extracted from AsBuilt Model.

CHALLENGES

- The gas station sizes and site components differed, hence our team had to identify and accurately model even the smallest elements. Some of the scans were missing important site details, which were communicated to the client. Hand sketches for the same was provided which were then incorporated into the model.

TECHTURE APPROACH

- Techture team set an organized SOP for executing this project ensuring the stations are completed in the given time frame with accurate details as necessary.

