

# CoreLux<sup>A1</sup>

BY ELTHERINGTON

## Beautiful aesthetics with exceptional durability

---



The strength and durability of premium grade aluminium wood planking, with the luxury of high-end affluent aesthetic.



LEARN MORE

[CoreluxA1.com](https://CoreluxA1.com)

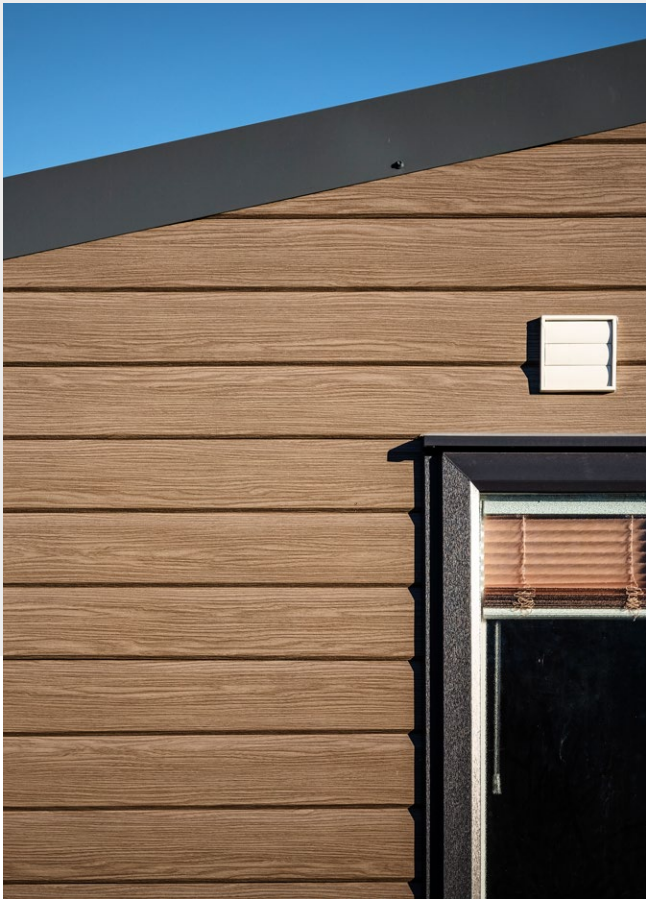


**eltherington**  
leisure products

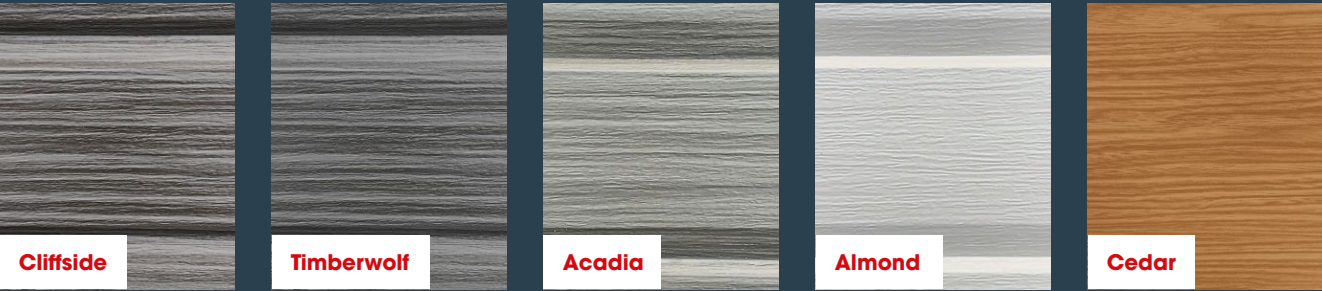


# A new innovative cladding system launch

At Eltherington, we have over 60 years of experience, knowledge and understanding of the thriving UK Leisure market. We believe this is one of the most innovative cladding systems ever to be launched and provides a host of benefits for manufacturers, dealers, parks and the end consumer.



# A versatile colour range



# Why choose CoreLux

## PERFORMANCE

CoreLux is a high-grade A1 fire rated aluminium cladding. It performs as well as other top tier cladding solutions but in addition CoreLux is fully capable for use with 5-metre site pitch spacing's.

Supported by a suite of supplements and accessories, CoreLux A1 can be fitted effortlessly with subtle and flush fit corners and joints. Featuring rapid installation with the innovative Quick-Rail assembly.

## DURABILITY

CoreLux's class A1 fire rating allows for close 5-metre spacing, meaning you can fit more leisure homes in your holiday park.

Showing extreme strength; CoreLux A1 boasts a thicker 0.7mm high performing alloy aluminium plank. Meaning your holiday homes can easily withstand general mistreatment or extreme weather.

## AESTHETICS

Its two-tone wood texture effect replicates that of other high end cladding systems, enhancing the quality of this bespoke cladding. Exclusively produced in five core colours: Cliffsides, Timberwolf, Almond, Acadia and Cedar.

The first and only Secret-Fix metal cladding system with no visible joints or fixings. CoreLux A1 promotes a higher-end and more pleasing final aesthetic.

## LONGEVITY

The composition of CoreLux A1 uses system-leading UV protection coatings; preventing fading, degrading and expansion.

This deluxe, lightweight aluminium is infinitely recyclable and features an exclusive 10-year product warranty.

# How do we compare?

	CoreLux	CanExel	Rigid Plastic	Aluminium	Timber
5 Metre Spacing's	✓	✗	✗	✓	✗
Flush fit corners and joints	✓	✗	✓	✗	✗
Innovative Quick-Rail assembly	✓	✗	✗	✗	✗
Two tone wood effect	✓	✓	✗	✗	✓
Secret fix system	✓	✓	✓	✗	✓
UV Resistant	✓	✓	✗	✓	✗
No visible expansion	✓	✓	✗	✗	✓
Recyclable	✓	✗	✗	✓	✗
10 Year Warranty	✓	✓	✗	✓	✗

A durable system with high-end aesthetics.



LEARN MORE  
CoreluxA1.com



# CoreLux<sup>A1</sup>

BY ELTHERINGTON



## Leaders in the Leisure sector

We've supplied the leisure home and caravan industry for over 60 years.

Throughout this time we have been focussed on supplying reliable, innovative and high quality solutions, which has earned us a place as the Partner of Choice for leading companies in the sector.

We offer a range of standard and bespoke products including exterior cladding, windows, doors and ancillary products for touring caravans, motor homes and holiday homes.



**eltherington**  
leisure products

**Eltherington Group Ltd**  
Eltherington Business Park,  
1305 Hedon Road,  
Hull, HU9 5QD  
East Yorkshire, UK

**T:** 01482 320336

**E:** [info@eltherington.co.uk](mailto:info@eltherington.co.uk)  
[eltherington.co.uk](http://eltherington.co.uk)

**CoreLuxA1.com**