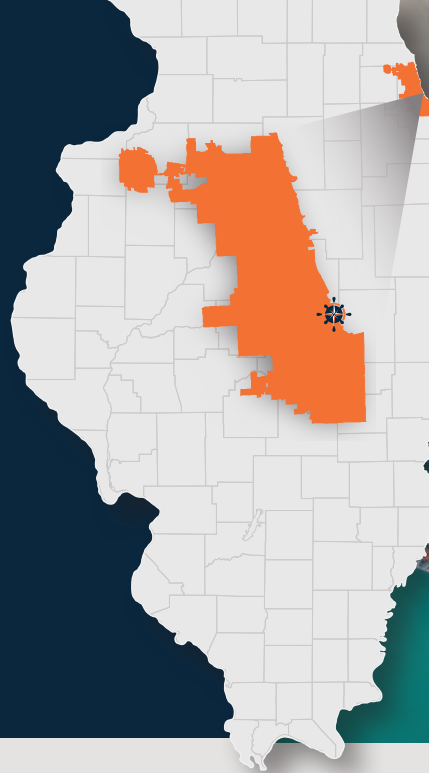


ILLINOIS INTERNATIONAL PORT DISTRICT

The Illinois International Port District is located in Northeastern Illinois and encompasses the entire city limits of Chicago.



Port District Biography

The Port District has a rich history that can be dated back to early nineteen hundred, over the course of its history it has been an important part of the industrial and economic development of the City of Chicago and the surrounding areas. The Port District owns three locations in the southeast side of Chicago totaling 1,690 acres these include, Iroquois Landing, Lake Calumet Harbor, and Harborside International Golf Center.

1913



Illinois Legislature passed law allowing the City of Chicago to acquire, develop, own and operate port facilities within the city limits.

1921



Illinois Legislature passed the Lake Calumet Harbor Act, the act allowed the City of Chicago to construct a harbor, having a basin and slips.

1946



Congress authorized the Cal Sag Project to facilitate barge traffic between Lake Michigan, the Illinois and Mississippi Rivers.

1951



Chicago Regional Port District was created to oversee harbor and port development.

1952



Chicago Regional Port District was established as an independent municipal corporation and granted the district roughly 1,500 acres of marshland at Lake Calumet. In the following years, construction began of a turning basin, docks, grain elevators, and public terminals.

1978



The Port District acquired an additional 190 acres at the mouth of the Calumet River. This site was named Iroquois Landing and construction of two new terminal sheds was complete.

1985



Illinois International Port District Act was signed into law, this act created a political subdivision and municipal corporation by the name of the Illinois International Port District, and widened the districts responsibilities.

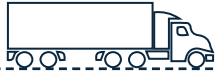
1994



Illinois International Port District Act was amended to allow for the District to operate recreational facilities, the Port District would develop Harborside International Golf Center.

Multimodal Connections

HIGHWAY



Several interstates, state routes, and US highways traverse the port district, these include I-55, I-57, I-90, I-94, I-290, IL 1, IL 19, IL 50, IL 64, US 12, and US 41. Included within these routes are a total of 20.8 Critical Urban Freight Corridor miles within the port district.

RAIL



Six class I railroads provide service within the port district, these include Burlington Northern Santa Fe (BNSF), Union Pacific (UP), Canadian National (CN), Norfolk Southern (NS), CSX Transportation (CSXT), and Canadian Pacific (CP).

WATER



The Port District has 28 miles of coastline along Lake Michigan, the lake is part of Marine Highway 90. Additionally the following navigable waterways flow through the port district the Chicago Sanitary & Ship Canal and the Chicago River 10 miles, the Chicago River North Branch 6.5 miles, and the Calumet River and Channel 13.5 miles. These waterways are part of Marine Highway 55.*

AIR

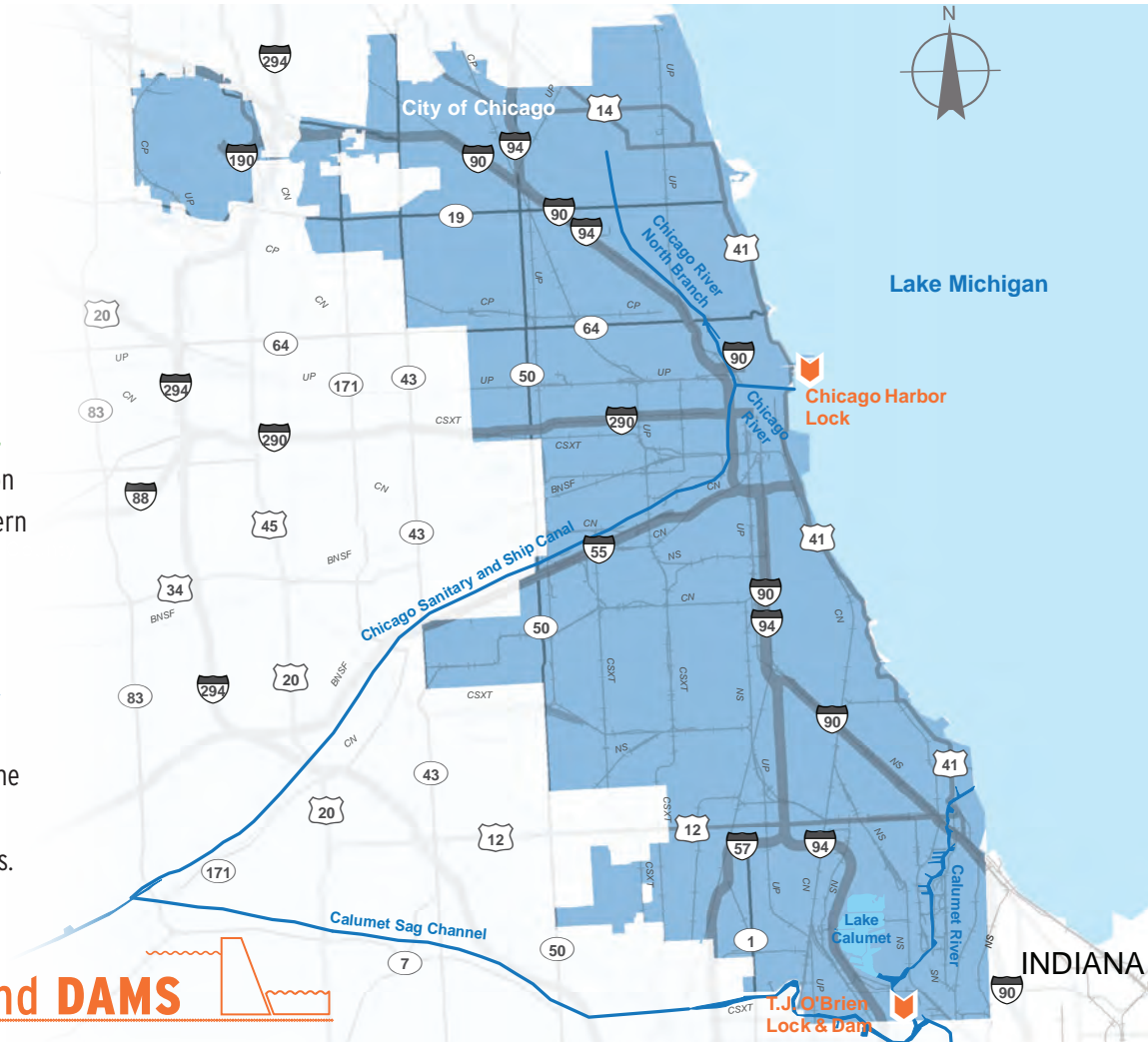


- Chicago O'Hare International - ORD (Chicago, IL)
- Chicago Midway International Airport - MDW (Chicago, IL)

LOCKS and DAMS



- Chicago Harbor Lock
- T.J. O'Brien Lock & Dam



Port District Top Commodities:

1

SAND
& GRAVEL

2

PETROLEUM
PRODUCTS

3

METAL
PRODUCTS



2017 Commodities by County** (inbound, outbound, in-state):

COOK COUNTY

13.9 MILLION TONS

*Commercial navigation on the North Branch of the Chicago River is limited north of the North Avenue Bridge

**Illinois International Port District does not encompass the entirety of Cook County

ILLINOIS INTERNATIONAL PORT DISTRICT

List of Terminals (Public and Private)

- | | | | |
|-----------|--|-----------|--|
| 1 | Midwest Marine & Rail Term - Northside | 16 | Iroquois Landing Terminal |
| 2 | Prairie Material Yard 32 | 17 | Scrap Processing Wharf |
| 3 | Midwest Marine & Rail - Chinatown Terminal | 18 | North American Salt Co., Chicago Plant Wharf |
| 4 | Welsch Ready Mix | 19 | The Brown 95th Street Wharf |
| 5 | E. A. Cox Construction Co. Wharf | | |
| 6 | Cozzi Iron & Metal Wharf | | |
| 7 | Barge Term Trucking/Damen Ave Yard, Sante Fe Slip | | |
| 8 | Domino Sugar Corp., Chicago Wharf | | |
| 9 | Ameropan Oil Corp., 33rd St. Terminal Dock | | |
| 10 | Prolerized Chicago Corp. Wharf | | |
| 11 | Prairie Material Yard 33 | | |
| 12 | Ameropan Corp., Bell Oil Terminal Wharf | | |
| 13 | Reliable Asphalt Corp. Wharf | | |
| 14 | Mobil Oil Corp., Cicero Avenue Dock | | |
| 15 | Citgo Petroleum Corp., Cicero Compound Plant Wharf | | |

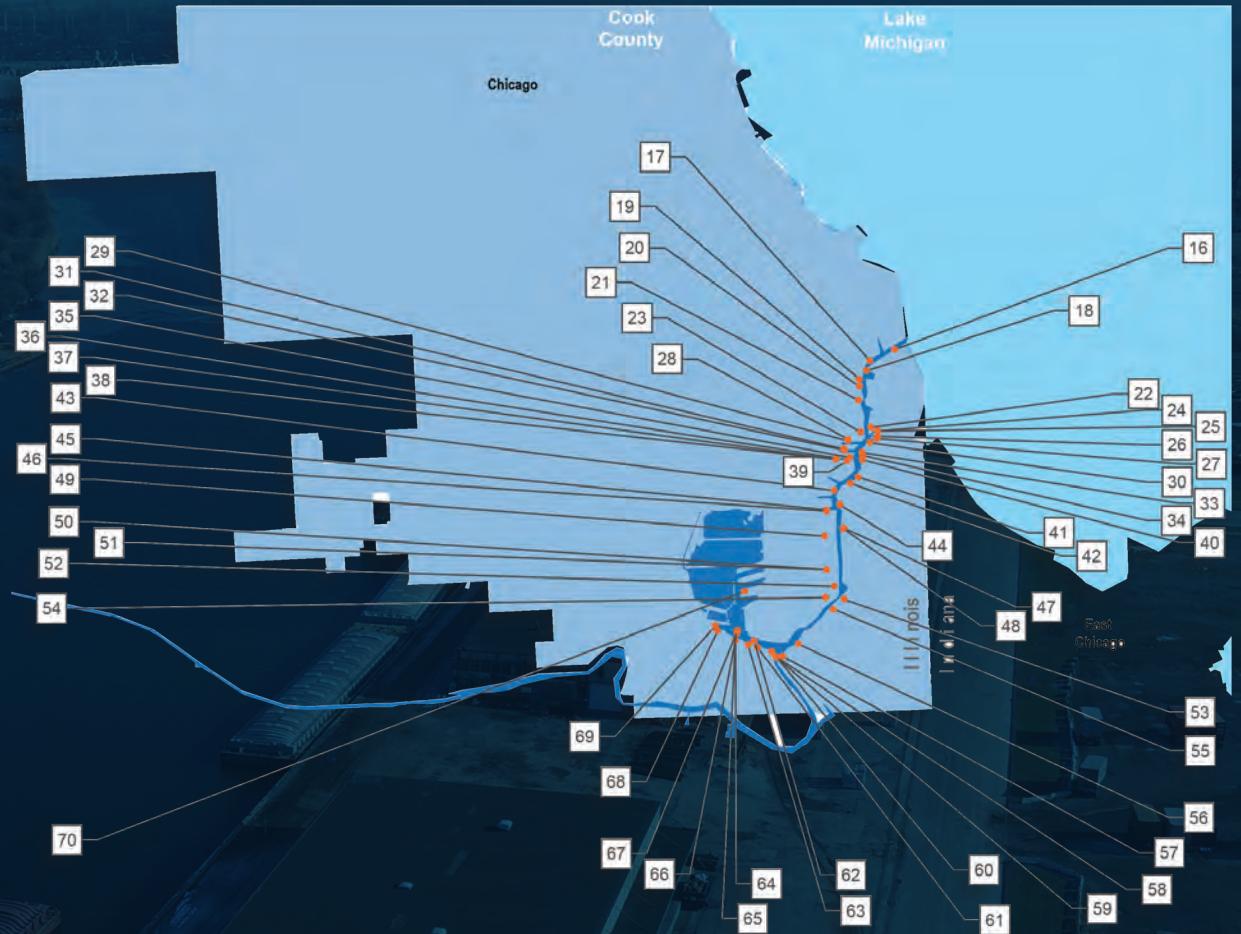


List Of Terminals (Cont'd)

- 20** Holcim, Inc.
- 21** Cozzi Calumet River Wharf
- 22** Morton Salt, Calumet River Wharf
- 23** Kcbx Terminals Co., Loading Wharf.
- 24** S. H. Bell Co., Chicago Terminals
- 25** S. H. Bell Co., Chicago Terminal, North Slip
- 26** S. H. Bell Co., Chicago Terminal, Middle Slip
- 27** S. H. Bell Co., Chicago Terminal, South Slip
- 28** KCBX South
- 29** KCBX Terminals Co., Barge-Unloading Slip
- 30** S. H. Bell Co., Chicago Terminal, Barge Wharves
- 31** E L G Metals Inc.
- 32** TPG Chicago Dry Dock
- 33** Carmeuse Lime, North Wharf
- 34** Carmeuse Lime
- 35** Midwest Marine Terminals Inc.
- 36** General Mills, Rialto Grain Elevator Wharf
- 37** General Mills, Chicago Cereal Plant Wharf
- 38** General Mills, Inc.
- 39** Calumet Transload Facility
- 40** Carmeuse Lime, South Wharf
- 41** Speciality Steel Products Wharf
- 42** Arcelormittal
- 43** Acme Steel Co., Furnace Plant, North Warf
- 44** Acme Steel Co., Furnace Plant, South Warf
- 45** Heckett Multiserv/Plant 45 Whf & Semet Solvay Slip
- 46** Asphalt Operating Services of Chicago, LLC (Aosc)
- 47** Reserve Marine Terminal (Vulcan Dock)
- 48** LTV Steel Co., Chicago Plant Wharf
- 49** Horsehead Resource Development Co., Chicago Wharf
- 50** Cargill, Chicago Wharves
- 51** Cargill, Chicago Mooring Wharf

- 52** Midwest Marine & Rail Terminals
- 53** PVS Chemicals Solutions Inc., Calumet Dock
- 54** Cargill, Chicago Salt Wharf
- 55** Kinder Morgan - Ferro Operation
- 56** S.E.E. Terminal Wharf
- 57** Lafarge Corp., Chicago Terminal
- 58** Scrap Corp. of America, Butler Wharf
- 59** Scrap Corp. of America
- 60** Scrap Corp. of America, Pennsylvania Wharf
- 61** Illinois International Port District, Lake Calumet Harbor Shed No. 3 Wharf

- 62** Ceres Terminals, Lake Calumet Harbor North Term WF
- 63** Illinois International Port District, Lake Calumet Harbor Shed No. 2 Wharf
- 64** Lake Calumet Harbor, Shed No. 1, 2 & 3 Wharves
- 65** Illinois International Port District, Lake Calumet Harbor Shed No. 1 Wharf
- 66** Maryland Pig Service
- 67** Kinder Morgan Liquid Terminal
- 68** Countrymark Coop/Gateway Grain Term/Lake Calumet
- 69** Continental Grain Co., Elev C, Lake Calumet
- 70** Emesco Marine Term, Lake Calumet Slip



Economic Impact

It is estimated that marine cargo activity being handled within the Illinois International Port District directly or indirectly supports 22,851 jobs within the state. These workers earn an estimated \$1.4 billion in wages and contribute approximately \$2.4 billion towards State GDP. The activity enabled comes from shippers across the state making use of facilities within the district, as well as the services supporting their goods movement. The table to the right breaks out the impact by the type of activity occurring.

	PORT USER	MARINE INDUSTRY	MARINE SUPPORTING	TOTAL
Employment	16,881	1,977	3,993	22,851
Income	\$1,067.7M	\$133.7M	\$283.2M	\$1,484.6M
Value Added	\$1,800.7M	\$227.4M	\$405.9M	\$2,434.0M
Output	\$3,850.2M	\$515.0M	\$703.5M	\$5,068.8M

Port-Owned Property Economic Impact

Independent of the port district economic analysis, the economic impacts of on-port tenants are presented below. These impacts are centered around the employment of businesses on port property: ranging from restaurants, golf courses, and youth organizations, to manufacturers and barge operators. These impacts represent the activities of marine and non-marine businesses to show the diversity of port activity.

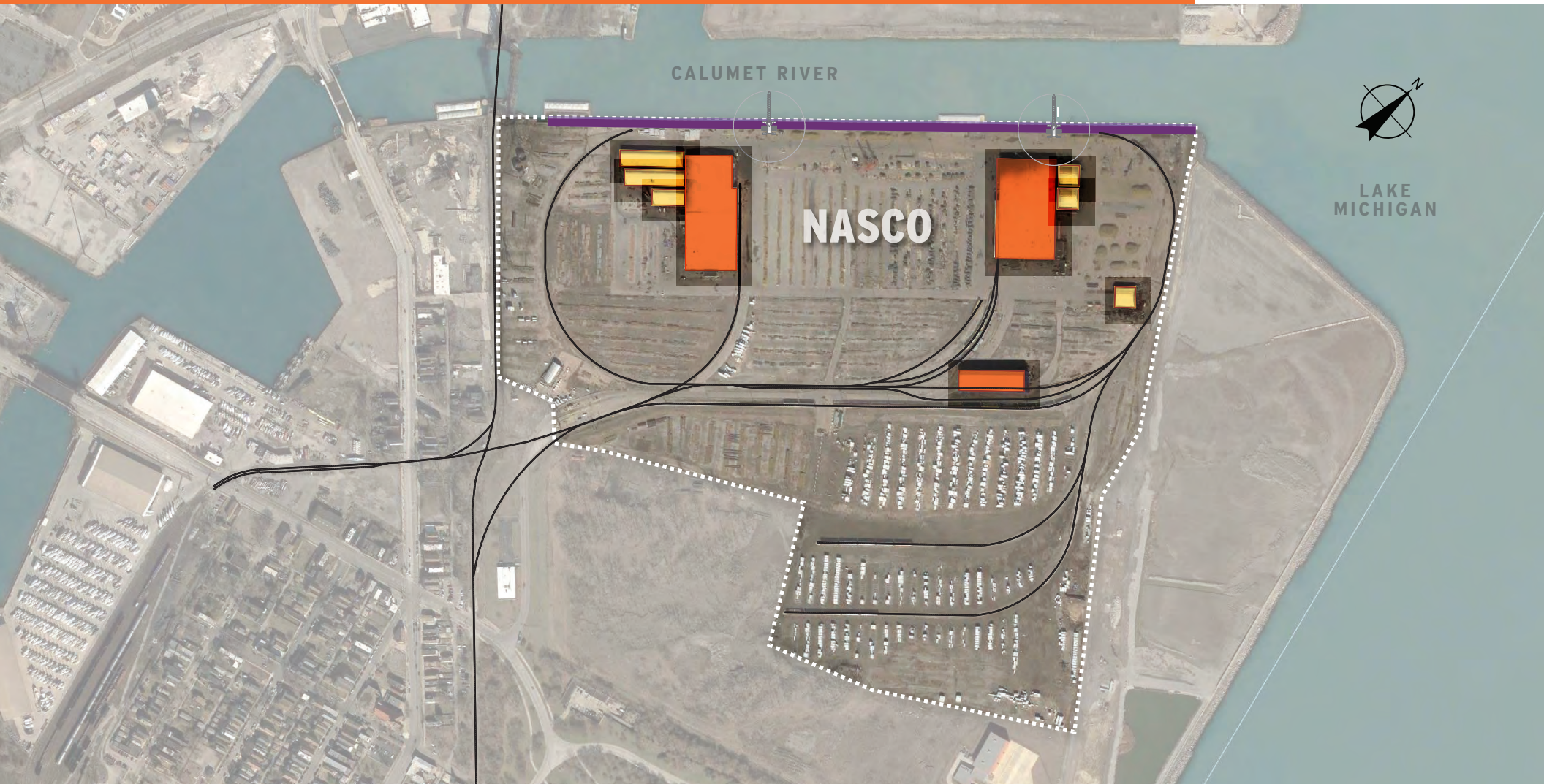
EMPLOYMENT	Iroquois Landing	585	2,765
	Lake Calumet	2,180	
INCOME	Iroquois Landing	\$40.7M	\$196.1M
	Lake Calumet	\$115.4M	
VALUE ADDED	Iroquois Landing	\$71.3M	\$322.7M
	Lake Calumet	\$251.4M	
OUTPUT	Iroquois Landing	\$110.8M	\$731.4M
	Lake Calumet	\$620.6M	

CAPITAL NEEDS

The Port District has many capital and maintenance needs which will require tens of millions dollars to address them. As of early 2021, the Port District is amidst a master planning process. This process will help the Port District better understand its investment needs. Capital improvements and needs will be a component of the master plan.

Iroquois Landing Terminal

Iroquois Landing is a 190-acre site located along the mouth of the Calumet River and Lake Michigan. The site has one major tenant North American Stevedoring Company which mainly handles steel, iron and lumber products. Located on the site are three warehouses which combined boast over 251 thousand square feet of storage space, additionally there are six canopy structures with over 72 thousand square feet of space. The site has 3,000 linear feet of berthing space which can accommodate both barges and large ships, this is due to the waterway having a navigation channel of 27 feet. Additionally, the site has a rail loop which can hold more than 135 railcars and has access six Class I railroads via interchange service provided by the South Chicago and Indiana Harbor Railway.



Calumet Lake Terminal

Lake Calumet is a 1,500 acre site located roughly six miles south of Lake Michigan and is situated on the Calumet River and Lake Calumet. The site has roughly 25 tenants who handle a diverse array of products including, but not limited to petroleum, chemicals, cement, iron, and sugar. There are several warehouses located on the site including four transit sheds that total 400,000 square feet of space. The transit sheds are located along the Calumet River and provide nearly 3,000 linear feet of berthing space for ships and barges. Additionally, there are 86 liquid storage tanks which have a capacity to store 741,116 barrels. The site has access to several modes of transportation including Chicago Rail Link which links into six Class I railroads, immediate access to interstate 94, and the Calumet River which is channelized 27 feet to the site.

