



## HIGHLIGHTS & FEATURES

- 138 +/- ACRES @ \$2 MILLION
- GRAVEL PIT IN PLACE
- SPECIAL RECREATIONAL ZONE
- SIX INCH WATERLINE RUNS THROUGH THE PROPERTY, A TWO INCH WATER SERVICE CURRENTLY EXISTING AND CAN BE EXPANDED
- NATURAL GAS
- FRONTAGE ON YELLOWHEAD HIGHWAY, POSSIBLE RV STORAGE SITE
- OTHER USE COULD BE CAMPING
- BOTH USES ARE DISCRETIONARY WITHIN THE CURRENT ZONING

**Richard Seguire, BROKER**

CELL: 403.615.8874

OFFICE: 403.460.3311

EMAIL: [rseguire@preferredcommercial.ca](mailto:rseguire@preferredcommercial.ca)

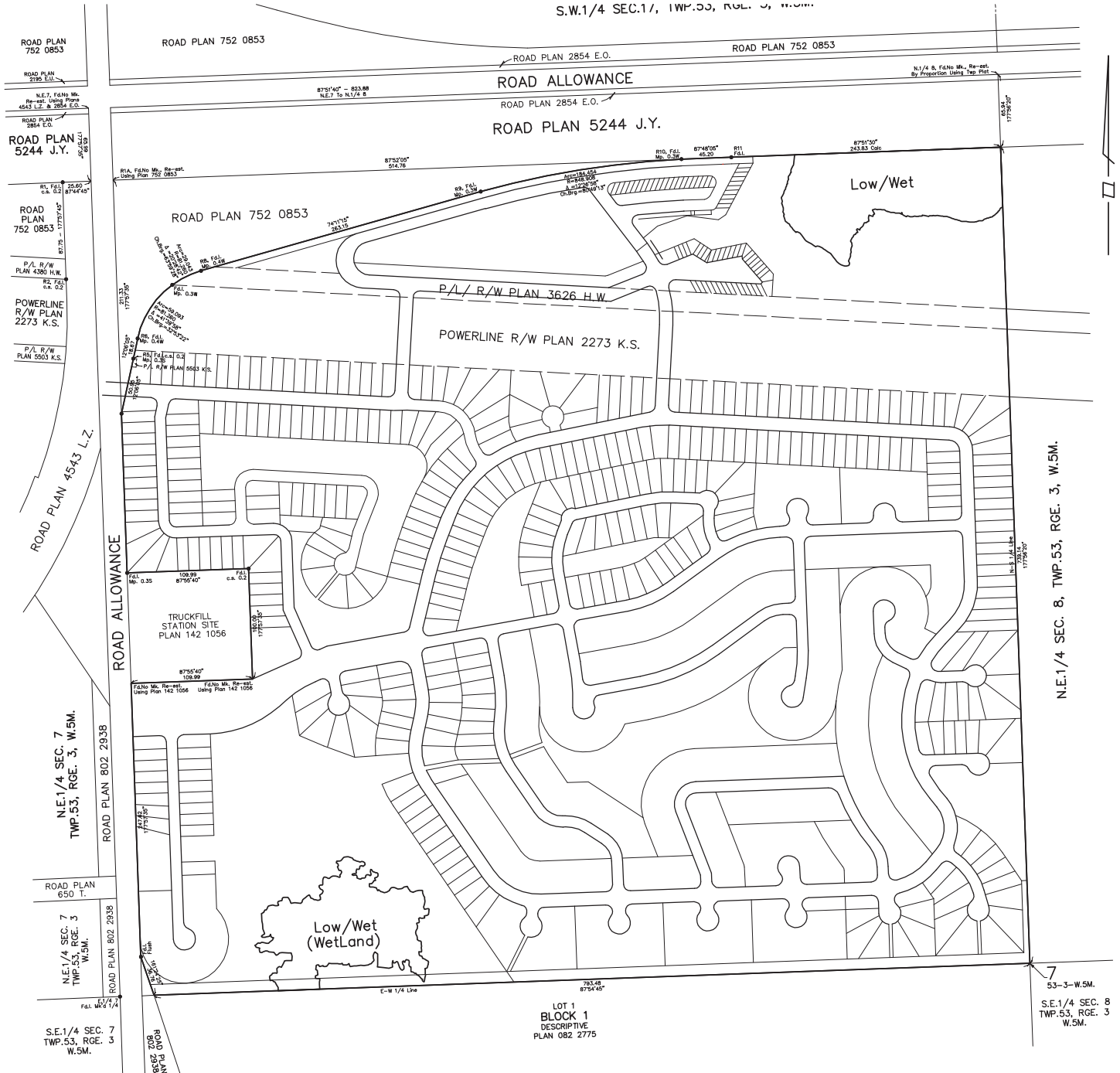
[www.preferredcommercial.ca](http://www.preferredcommercial.ca)

The information contained herein has been obtained for advertising and general information only. Preferred Commercial makes no warranties, promises and/or representations of any kind, expressed or implied, are given as to the nature, standard, accuracy and reliability of the information and Preferred Commercial assumes no liability for loss and damages arising there from. This property/information is subject to change and withdrawal without notice.



**PREFERRED**

138 +/- ACRES LAND / WABAMUN  
**For Sale**



**Richard Seguire, BROKER**

CELL: 403.615.8874

OFFICE: 403.460.3311

EMAIL: rseguire@preferredcommercial.ca

[www.preferredcommercial.ca](http://www.preferredcommercial.ca)

The information contained herein has been obtained for advertising and general information only. Preferred Commercial makes no warranties, promises and/or representations of any kind, expressed or implied, are given as to the nature, standard, accuracy and reliability of the information and Preferred Commercial assumes no liability for loss and damages arising there from. This property/information is subject to change and withdrawal without notice.





**Richard Seguire, BROKER**

CELL: 403.615.8874

OFFICE: 403.460.3311

EMAIL: [rseguire@preferredcommercial.ca](mailto:rseguire@preferredcommercial.ca)

[www.preferredcommercial.ca](http://www.preferredcommercial.ca)