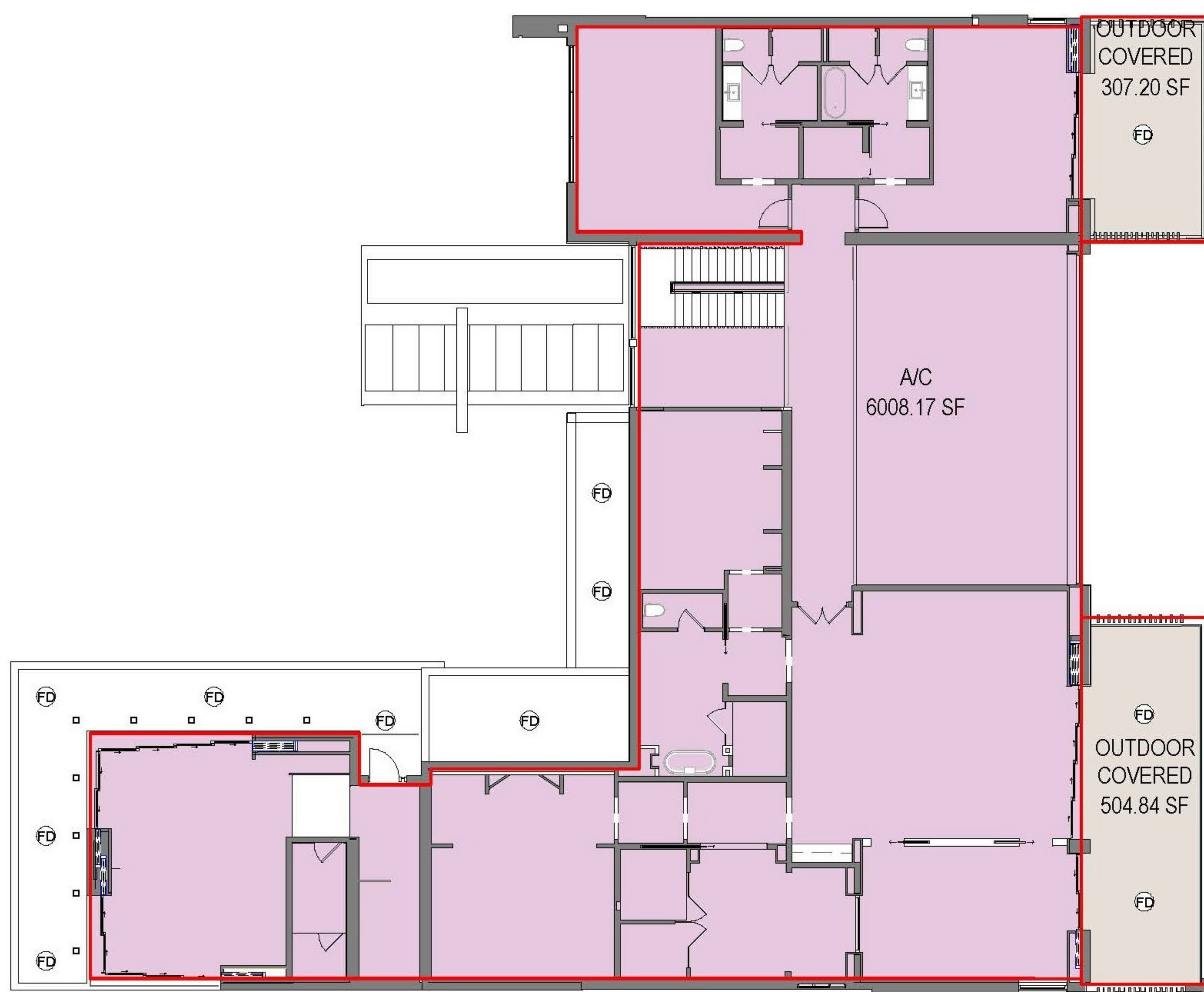




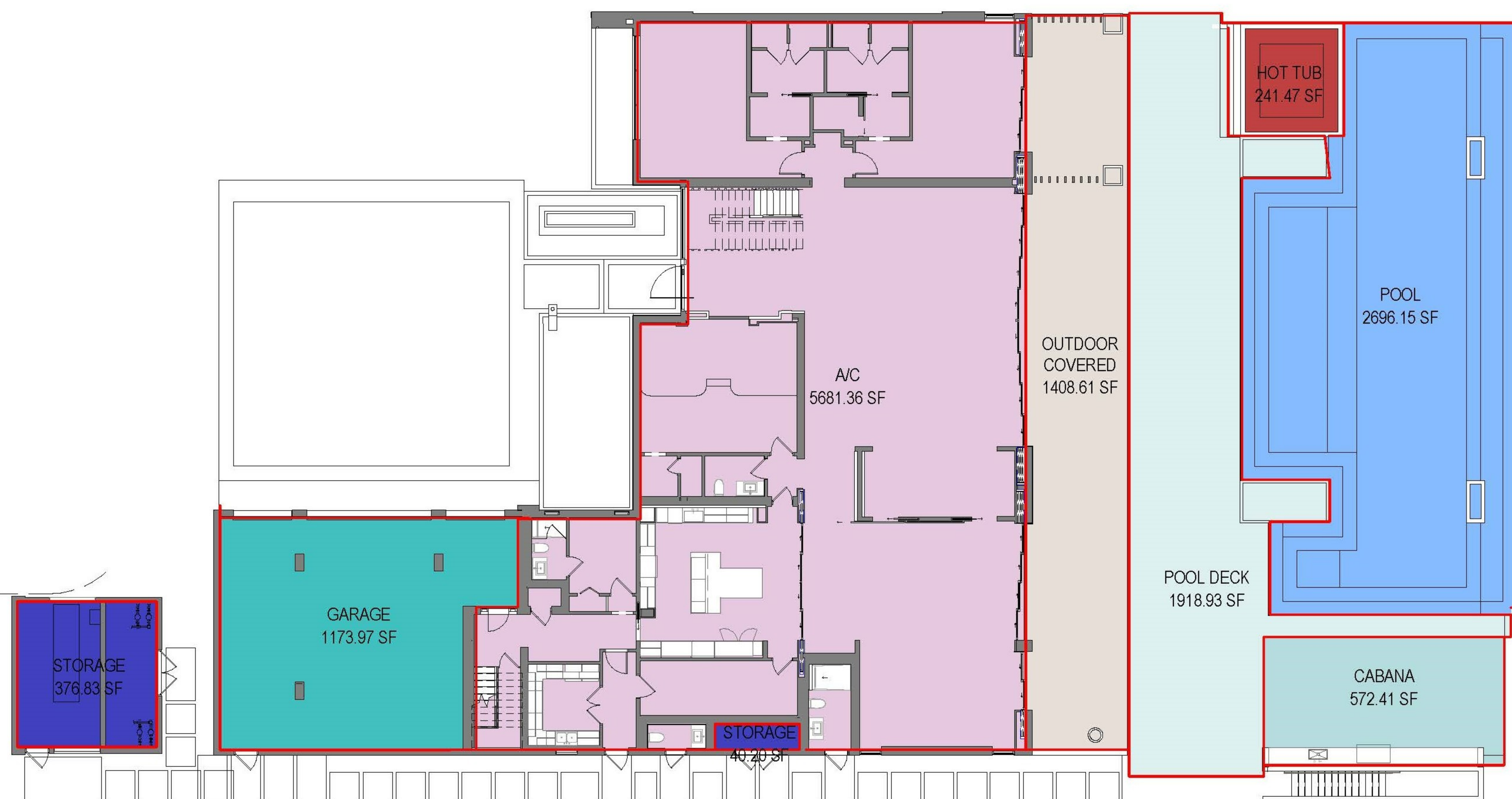
Atlantic Drive Residences

Bahia Beach, PR



AREAS-MH1			
	GROSS AREA	OCCUPIED AREA	ACCESSORY AREA
LEVEL 1			
A/C	5681.36 SF	5681.36 SF	
CABANA	572.41 SF	572.41 SF	572.41 SF
GARAGE	1173.97 SF	0.00 SF	
HOT TUB	0.00 SF	241.47 SF	
OUTDOOR COVERED	1408.61 SF	1408.61 SF	
POOL	0.00 SF	2696.15 SF	
POOL DECK	1918.93 SF	1918.93 SF	
STORAGE	417.02 SF	417.02 SF	
	11172.30 SF	12935.95 SF	
LEVEL 2			
A/C	6008.17 SF	6008.17 SF	
OUTDOOR COVERED	812.05 SF	812.05 SF	
	6820.22 SF	6820.22 SF	
TOTAL	17992.52 SF	19756.17 SF	

2 MH1-LEVEL 2 AREA PLAN
1/16" = 1'-0"



1 MH1-LEVEL 1 AREA PLAN
1/16" = 1'-0"



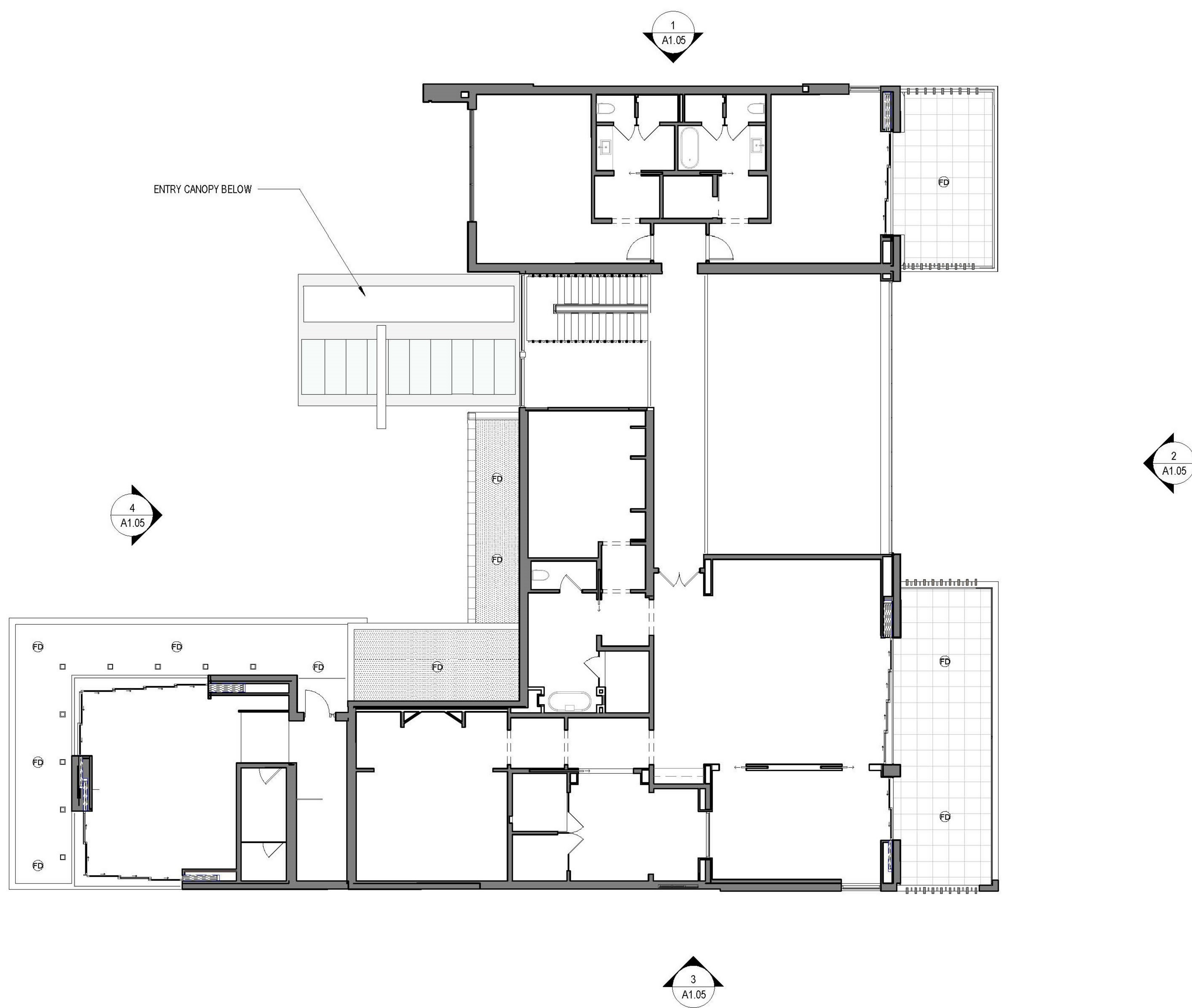
SB ARCHITECTS[®]

www.sb-architects.com

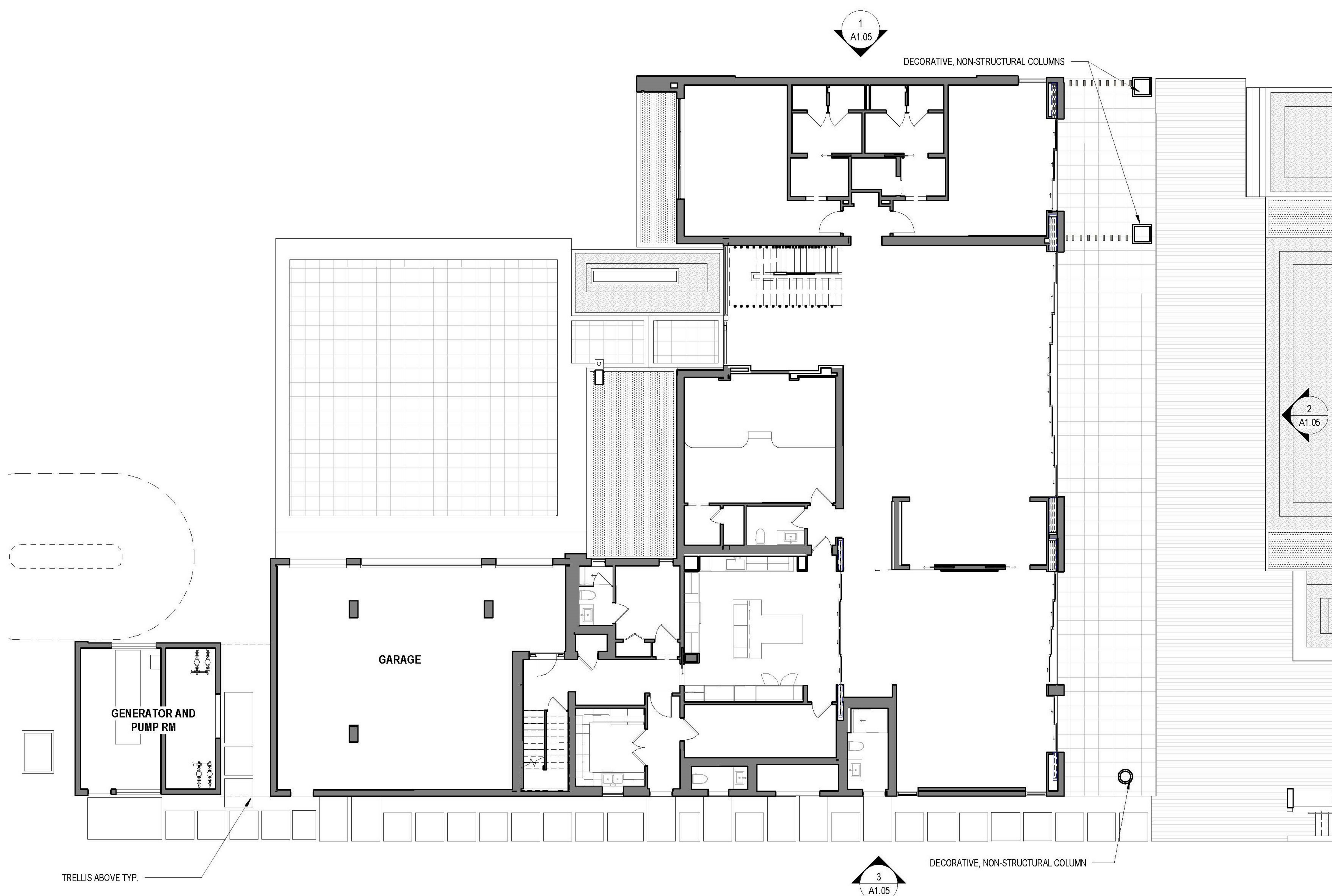
2333 Ponce de Leon Boulevard, Suite
1000 Coral Gables, FL 33134
T 305/856-2021

A California Corporation

Consultants



2 MH1-LEVEL 2 FLOOR PLAN
3/32" = 1'-0"



1 MH1-LEVEL 1 FLOOR PLAN
3/32" = 1'-0"

Atlantic Drive Residences

Bahia Beach, PR