



Sharing the Path from Hope to Recovery

FORMERLY MENTAL HEALTH CENTER OF DANE COUNTY



2012 ANNUAL REPORT

Navigating The Winds Of Change:

HARNESSING OUR COLLECTIVE POWER

CHIEF EXECUTIVE OFFICER'S ANNUAL REPORT LETTER

Two thousand and twelve was a year of opportunity and transition for Journey Mental Health Center (JMHC). We continued to provide services to both uninsured and insured individuals and families from diverse backgrounds. Despite funding shortages we served more people in 2012 than ever before by creating more efficient, cost-effective practices. Both our consumers and our community partners expressed high levels of satisfaction with our work.

Our Medical Director of 35 years, Dr. Ron Diamond, retired leaving behind a legacy of grateful consumers, recovery-focused treatment models and egalitarian multidisciplinary teams. Donations from the community enabled JMHC to create, in his name, the Diamond Suite for Integrated Care at JMHC's-Kennedy Building.

We continued to prepare for full implementation of The Patient Protection and Affordable Care Act (PPACA) by participating in a statewide

learning collaborative on Health Homes coordinated by the National Council on Behavioral Health. As a result, Wisconsin will launch pilot programs that test various models of integrated (primary/behavioral health) care throughout the state.

We continued to combat rising hospital costs through our emergency service (ESU) hospital diversion (Bayside Care Center) and consumer respite (Recovery House) programs. These programs divert millions of dollars from the County's inpatient budget to community service programs. As the Affordable Care Act approaches, legislative interest



2012 Board of Directors

Linda Brei
Kalliope Marketing Services
Chair

Mary Wright
WHEDA
Vice Chair

Gayle Galston
Restaino & Associates
Secretary

Greg Blum
Hemb Insurance Group
Treasurer

James Christensen
StratOrg Services, LLC.
Immediate Past Chair

Martin Croak
*Croak, Gonzalez,
Eckerle & Martinson*

Elena Golden
Goodwill Industries

Paige Goldner
QTI Professional Staffing

Sam Keller
TEC

Kristi Papcke-Benson
Madison College

Cheryl Porior-Mayhew
St. Dennis Parish

Judy Wilcox
Retired

2012 Agency Directors

William Greer, MS, LCSW
President and CEO

Lynn Brady, MPA
Chief Operations Officer

Gerry Brew, CMA, MBA
Chief Financial Officer

Ron Diamond, MD
Medical Director

Sue Moran, MS, LPC, CSAC, Ind. CS
Director of Outpatient Services

Brad Schlough, MS, LPC
Director of Community Services

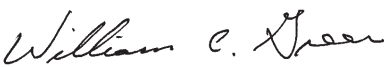
Dan Muxfeld
*Director of Development and
Community Relations*

in replicating these programs is high because of their cost effectiveness and recovery focus.

Our Community Programs are prime examples of the adage of “meeting the consumer where she is.” They provide outreach, work support, cultural milieu and socialization to individuals and families with severe and persistent mental illness or substance abuse issues in consumer friendly settings.

Finally, we have begun the process of purchasing an Electronic Medical Record (EMR) that is certified for “meaningful use.” This is an essential tool for agencies that want to remain viable in the era of Affordable Care. This critical process will engage our staff, board and consultants in selecting a system that will fulfill our data, billing record keeping and other information technology needs for years to come.

These are challenging and exciting times. We look forward to the prospect of serving more people in more places in better ways. This is in keeping with our mission of “improving people’s lives by pioneering and sustaining effective mental health and substance abuse services.” We are grateful for and humbled by the support of our consumers, staff, benefactors and partners in our continuing journey.



William Greer
President & CEO

Board of Director's 2012 Meeting Schedule

Meetings are held the 4th Thursday of the month:

DATE	THEMES
APRIL 26, 2012	BUDGET REVIEW
MAY 24, 2012	AUDIT
SEPTEMBER 27, 2012	STRATEGIC PLAN UPDATE
OCTOBER 25, 2012	COUNTY FUNDING
DECEMBER 6, 2012	YEAR END WRAP UP

In addition, the Executive Committee began meeting on the second Friday in May. All members are welcome to attend the Executive Committee meetings:

January 10, February 14, March 13,
April 10, May 11, June 15, July 13,
August 10, September 14, October 12,
November 9, December 14

625 W. Washington Avenue
Madison, WI 53703-2637
Phone: 608.280.2700 | Fax: 608.280.2707

Who We Serve

PEOPLE TREATED IN 2012: 8,585

Ability to Pay

83% of our consumers were not assessed a fee based on their ability to pay and a sliding fee scale.

Some consumers who are not assessed a fee may qualify for Medicare or Medicaid in which case JMHC will receive payment in some form

Type of Client:

Youth (age 18 and under)18%
Adult, Mental Health Needs.....64%
Adult, Alcohol/Drug Concerns.....18%

Age:

0-128%
13-189%
19-3939%
40-5930%
60+.....10%

Heritage

African American16%
American Indian1%
Asian/Pacific Islander4%
Bi/Multi Racial Heritage4%
European American64%
Hispanic Origin/Latin American.....8%

Gender:

Female49%
Male 51%

Residence

Madison, Middleton,
Monona, Fitchburg67%
Other Dane County Communities33%

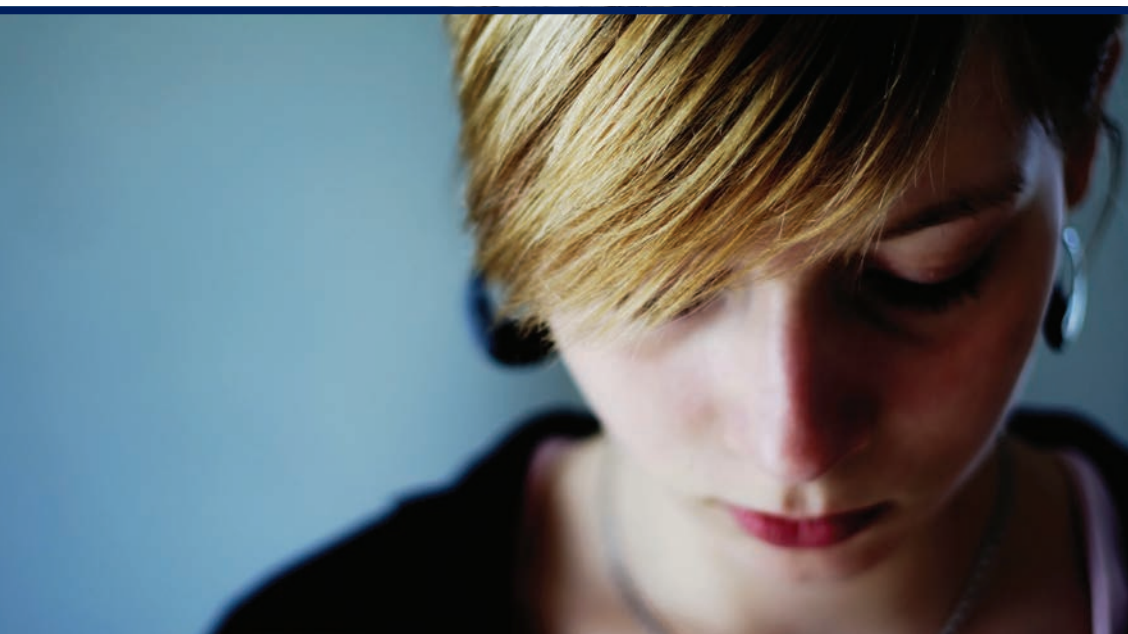
Means of Payment

No Insurance, MC or MA39%
Medicare/Medical Assistance37%
BadgerCare HMO.....22%
Insurance/HMO/Other2%

PEOPLE ASSESSED IN 2012: 4,589

Type of Client:

OWI Assessment Program 2,499
Central Intake Assessment 2,090
Court Ordered Evaluations 1,168
Jail Diversion (Treatment Alternative Program,
Drug Court, OWI Treatment Court, DART)..... 286



How We Serve Them

JOURNEY MENTAL HEALTH CENTER PROGRAMS

Outpatient Services:

- Adult, Child, and Family Therapy for Mental Illness, Drug Abuse and Developmental Disabilities
- Psychiatry
- Family Preservation Program
- UJIMA Treatment Program
- Mobile Outreach to Seniors Team (MOST)
- Cognitive Behavioral Intervention for Trauma in Schools (CBITS)
- Clinica Latina
- Resource Bridge
- Central Intake
- Safe Step Assessments
- Suboxone Clinic

Assessment Services:

- Chapter 20
- Court Ordered Evaluations
- Drug Treatment Court Program/ Treatment Alternatives Program/ Day Report and Treatment Program
- OWI Treatment Court

Community Services:

- Cornerstone
- Blacksmith House
- Community Treatment Alternatives (CTA)
- Conditional Release
- Gateway
- HUD/CDA Triangle Services
- Yahara House
 - Clubhouse
 - Employment Services/Job Coaching
- Southeast Asian Services
 - Kajsia House
 - Southeast Asian Program
 - Cambodian Temple

Emergency Services:

- Crisis Intervention
- 24 Hour Emergency Phone
- Adult Crisis
- Youth Crisis
- Crisis Stabilization
- Bayside Care Center
- Recovery House



How We Serve Them

OUTPATIENT SERVICES

Outpatient Services at Journey Mental Health Center (JMHC) offers licensed Master's level therapists providing adult, child and family therapy for mental health problems, substance abuse, and developmental disabilities. JMHC also provides individual, family and group services. Psychiatry services are integrated into treatment services.

Mental Health & Substance Abuse

Treatment: Outpatient treatment providing individual, family and group services. Psychiatry services are integrated into treatment services. Counseling is provided to individuals who are stabilized on psychiatric medications and need ongoing support to maintain stability in the community.

Clinica Latina: Provides mental health and substance abuse services to Spanish speaking individuals by professional bilingual and bicultural clinicians.

Safe Step: Assessments are provided for children and youth referred by Safe Harbor Child Advocacy Center. Safe Step assessments are completed within five to seven days of the child's forensic interview at Safe Harbor. The assessments provide the family with recommendations for ongoing treatment

of the child(ren), and the non-offending caregiver(s). Treatment for many children continues in JMHC's Family Based services.

Mobile Outreach to Seniors Program

(MOST): Provides a range of accessible mental health services to address the highly complex and changeable needs of seniors and their caregivers.

Ujima Program: Serves African American families with substance abuse and mental health problems. The program provides culturally specific group, individual, couple and family counseling with case management services for up to 18 months.

Family Preservation Program: Provides intensive, in-home services for families with a child or children between the ages of 0 and 12 at risk of out home placement. Families are seen daily for the first 14 days of the program of the 8-week program. On call staff and supervision is provided 24 hours a day for program families.

Resource Bridge: Bridges the gap between a mental health crisis (hospitalization, use of Emergency Services, Care Center placement) and ongoing services in the community. Offers crisis stabilization services for up to 90 days as needed.



CLINICAL COMMUNITY PROGRAMS

Journey Mental Health Center's Community Based Service programs have achieved an international reputation for clinical effectiveness for individuals with complex mental health and substance abuse issues. The goal of these programs is to make mental health and substance abuse services accessible to a diverse range of communities.

Conditional Release Program: Provides comprehensive treatment and case management services to clients who have been found "not guilty by reason of mental disease or defect" and whom the Court deems appropriate for conditional release.

Community Treatment Alternatives: Works with clients/consumers involved in the criminal justice system.

Gateway and Fordem Connections: Two of JMHC's three state-certified Community Support Programs. They are comprehensive support programs serving Dane County residents who have severe mental illness and may also have substance abuse issues.

Kajsiab House: A place where Hmong elders and their families can be safe, express and experience culture, increase their understanding and the ability to live successfully within the Dane County Community, and receive help and treatment for mental health issues.

Southeast Asian Services: Offers mental health and psychiatry services to Southeast Asian individuals living in Dane County.

Yahara House: Offers adults with mental illness a path to recovery through relationships and work. It is built on the clubhouse model that guarantees a place to belong and experience meaningful relationships, meaningful work and a place to return.

Clinical Assessment Programs:

Clinical Assessment Programs provide comprehensive, objective, and cost-effective clinical assessments and evaluations for impaired drivers, Adult Protective Services, and Juvenile and Probate Courts. An additional primary focus is clinical and administrative coordination for four alternative sanction programs: The Treatment Alternatives Program (TAP); the Drug Court Treatment Program (DCTP); the Day Report and Treatment Program (DART); and the OWI Treatment Court program.

EMERGENCY SERVICES PROGRAMS

Emergency Services Programs at JMHC support adults and children with special and long-term mental health needs reside successfully in the community, with a goal of assisting individuals in crisis return to a more satisfactory level of functioning. Emergency Services Programs work to prevent suicides, reduce the number of out-of-home placements for children/youth, and reduce the need for unnecessary hospitalizations and institutional stays.

Bayside Care Center: Designed and staffed for expert assessment, stabilization, and treatment of individuals experiencing a mental health crisis. This new short-term residential facility provides quality care while reducing the need for hospital admissions. It is housed with JMHC's Emergency Services Unit for an efficient and seamless transition from assessment to treatment.

Adult and Youth Crisis Stabilization:

Provides an array of services aimed at helping Dane County residents with persistent mental illness become and remain stable in the community. Services include short-term stays in a Crisis Home or Recovery House, longer-term stays in Adult Family Homes, and support for individuals who are transitioning to independent living.

Survivors of Suicide (SOS): Provides information and support to persons who have been affected by suicide.

Balance Sheet

ASSETS

Cash	\$1,979,019
Accounts Receivable	597,960
Prepaid Expenses	251,403
Investments	257,801
Property and Equipment (net)	2,447,078
TOTAL ASSETS	\$5,533,261

LIABILITIES & EQUITY

Accounts Payable	\$1,445,133
Other Current Liabilities	746,721
Notes & Mortgage Payable	1,742,502
TOTAL LIABILITIES	\$3,934,356
Retained Earnings	\$1,772,853
Net Surplus-Current Year	(173,948)
TOTAL EQUITY	\$1,598,905
TOTAL LIABILITIES AND EQUITY	\$5,533,261

SOURCES OF FUNDS:

Southeast Asian & Kajsiab House	3.7%
Mobile Outreach to Seniors	2.0%
Yahara House	6.7%
Developmentally Disabled	0.2%
Emergency Services.....	7.4%
Crisis Services	8.7%
Recovery House	1.2%
Community Support Programs	15.1%
Jail Diversion	7.9%
Youth & Family Related	15.7%
Drug & Alcohol Treatment Related	13.8%
Adult Mental Health	8.0%
Ujima	1.1%
Other	8.5%
TOTAL.....	100.0%

2012 GRANTS, FUNDING, CONTRACTS

Access Community Health Center	Dane County Dept of Human Services - Mental Health/AODA Services	Federal Ticket to Work Program
Badger Prairie Health Care Center	Employment Resources, Inc.	SOAR/Recovery Dane
Catholic Charities	Family Services	State of Wisconsin-Dept of Health & Family Services - Benefits Counseling
Children Come First/Community Partnerships	Group Health Cooperative	State of Wisconsin-Dept of Health & Family Services - Conditional Release
Chrysalis	Jennie H Olsen Charitable Foundation - Mental Health First Aid grant	United Way
City of Madison-Community Development Authority	Meriter Health Services	Unity Health Insurance
City of Madison-Southeast Asian Senior Services grant	Physicians Plus	University Hill Farms Assoc. Inc. - Consumer Holiday Needs
Clearview Longterm Care	Rodney Scheel House	University of Wisconsin School of Nursing-Health Disparities Project
	Safe Harbor Child Advocacy Center	



625 W. Washington Avenue
Madison, WI 53703-2637

Phone: 608.280.2700 | Fax: 608.280.2707



www.journeymhc.org