



AUTOMATION

In the context of Industry 4.0, automation is of crucial importance. Key topics such as **robotics**, **artificial intelligence**, and **sensor technology** are becoming more and more relevant, and ZELL Group is contributing to the **automation of work processes** with innovative products. The **ZELL® Carrier**, an intelligent transport system, not only **boosts productivity** through **precise control** and navigation but also **adapts** flexibly to changing production requirements. The **modularity** of the ZELL system leads to more agile companies as, unlike thermoforming plastic trays, the ZELL parts carriers can be used for many years. In addition, a consistent and modular system enables cost savings, since **reloading** into different containers is avoided, resulting in reduced personnel costs.



www.zell-group.com



Zum Tannenesch 24, 89584 Ehingen



+49 7391 770040

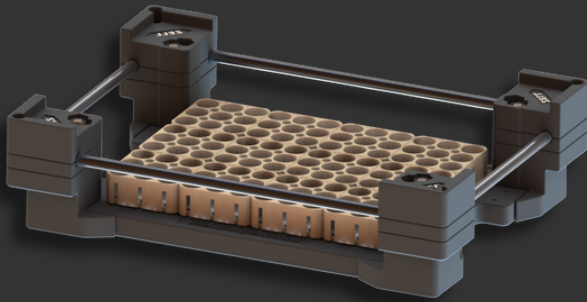


info@zell-group.com



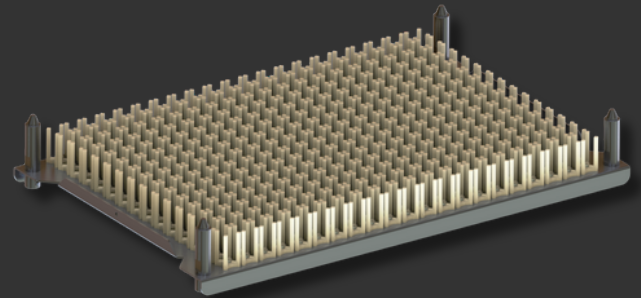
ZELL products for automation

We provide tools for automation solutions that aim to **optimize** our customers' **production processes** and **increase** their **efficiency**. The distinction between the following two carrier materials is essential for automation, as the different materials can offer different **advantages** depending on their intended use.



Advantages of plastic carriers

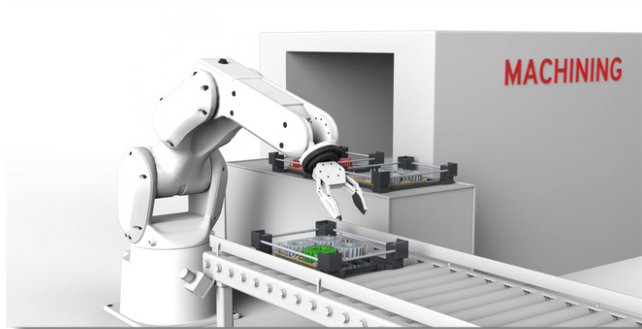
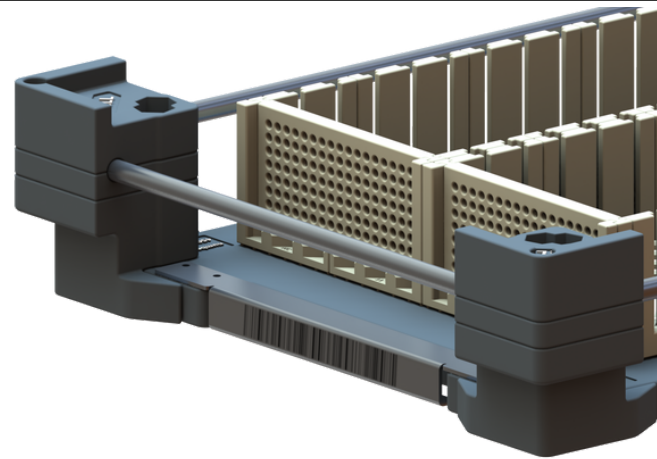
- More cost efficient
- Less weight
- Modularly adaptable
- Suitable for longitudinal and transverse roller conveyors
- Guidance on the roller conveyor



Advantages of stainless steel carriers

- Higher process reliability due to our precise spacers
- The base area can be freely designed in your dimensions
- No additional components for the automatic customer ID

Label plates and **label holders** are key tools for **sensor technology**, **RF-ID**, and lasered **2D codes** (e.g. QR or barcodes). These support the **automation** of work processes and allow **direct analysis** and **control** of workflows. **Customer-specific automatic identification systems** (Auto-ID) can be integrated into the ZELL products and ensure a **smooth process** without manual intervention.



Our **clips** are designed to ensure that the grippers can pick up the product **without friction**. Each clip is **individually customized** and efficiently designed to optimally support the gripper and **prevent scratches** or other defects, ensuring **high product quality**.

