

## **Model OFP 2\1 Overfill Protection Valve Installation** **Instructions**

*October 1, 2019*

### **COMPONENTS**

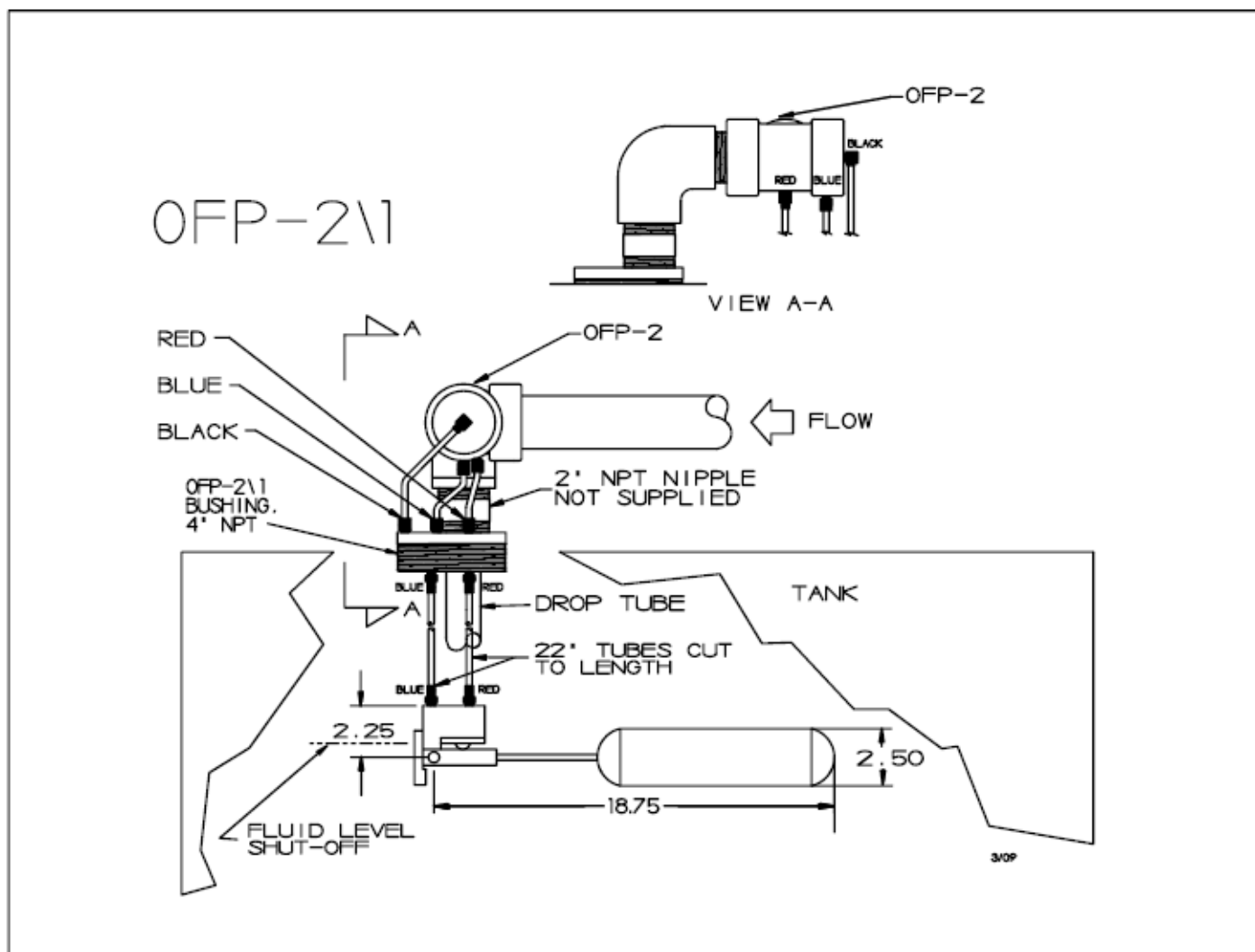
- (1) Shutdown Valve (Inlet & Discharge of Valve are 2" female pipe threads)
- (1) 4" male pipe thread x 2" female x 1/4" x 1/4" x 1/4" Doubletap Bushing
- (1) Pilot Valve
- (1) Float & Float Arm
- (3) 1/4" Compression x 1/8" Male Adapter Elbow
- (3) 1/4" Compression x 1/4" Male Adapter Straight
- (2) 22" x 3/8" Gauge Tubing (Hi Pressure Steel Tubing - .049" wall thickness)
- (4) 3/8" Bite Fitting (Compression) x 1/4" Male Adapter
- (1) 4' x 1/4" Copper Tubing

**SUPPLY PUMP MUST BE CAPABLE OF MAINTAINING 7-psi FLOWING PRESSURE  
AND HAVE A FUNCTIONING BYPASS RELIEF VALVE SET AT 50 psi MAXIMUM.**

### **INSTALLATION**

1. Screw the Float and Float Arm into the Pilot Valve.
2. Screw 3/8" Bite fittings into the Pilot Valve without pipe sealant.
3. Screw 3/8" Bite fittings into the bottom edge of the Doubletap Bushing without pipe sealant, the side that will be inside the tank after the bushing is installed in the tank bung.
4. Cut the Gauge Tubing to the appropriate length. The two lengths of tubing must be within 1/64 of an inch of each other for proper installation. Due to the many tank configurations, it is the installer's responsibility to calculate the actual tubing length for the specific installation. The actual shut-off level of this valve is at the poppet of the Pilot Valve.
5. Matching Blue-to-Blue and Red-to-Red, install the Gauge Tubing from the bottom of the Doubletap Bushing to the Pilot Valve.
6. Test Doubletap/ Pilot Valve Assembly.
  - a. Apply air pressure (30-50 psi) to RED port on top of the Doubletap Bushing while the Float is in the down position. Air should flow through the tubing, Pilot Valve, and back out the BLUE port on top of the Doubletap Bushing.
  - b. While air pressure is being applied, squeeze the Float Arm Clevis upward to compress the poppet. Air should stop flowing out the BLUE port.

- c. Apply air to the BLUE port while the Float is in the down position. It should flow through the RED port. Squeeze the Float Arm Clevis upward. The air should stop flowing through the RED port and flow through the clearance around the poppet.
  7. Slip the Doubletap Bushing/ Pilot Valve/ Float Assembly into the 4" bung of the tank and tighten the Doubletap Bushing. (See Important Notes Below)
  8. Screw a 2" nipple into the top of the Doubletap Bushing. If a drop tube is required, it may now be installed through the 2" nipple.
  9. Install the discharge side of the Shutdown Valve on the 2" nipple.
  10. Install the three (3) 1/4" Compression x 1/4" Male Adapter Straights into the top of the Doubletap Bushing. Install the two (2) 1/4" Compression x 1/8" Male Adapter Elbows into the side of the Shutdown Valve. Install one (1) 1/4" Compression x 1/8" Male Adapter Elbow into the vent on the top of the Valve.
  11. Install refrigeration grade 1/4" OD tubing, following color coding for the Vent and Pressure Tubing connections between the Shutdown Valve and the top of the bushing.
  12. Install pipe from the inlet side of the Shutdown Valve to the appropriate connections terminating with a Dry Disconnect.
- Shutdown Valve should be installed in horizontal position to prevent accumulation of moisture.
  - Care should be taken to properly align Float in tank to stay clear of all obstructions. (The Float runs parallel with the RED and BLUE marks on the top of the Bushing and faces in the direction of the RED marking.)
  - All threads should be doped using a suitable UL approved pipe sealant.



Vaporless Manufacturing, Inc.

8700 East Long Mesa Drive, Prescott Valley, Arizona 86314

Toll Free: 800.367.0185 Phone: 928.775.5191 Fax: 928.775.5309

Website: [www.vaporless.com](http://www.vaporless.com)

Email: [sales@vaporless.com](mailto:sales@vaporless.com)

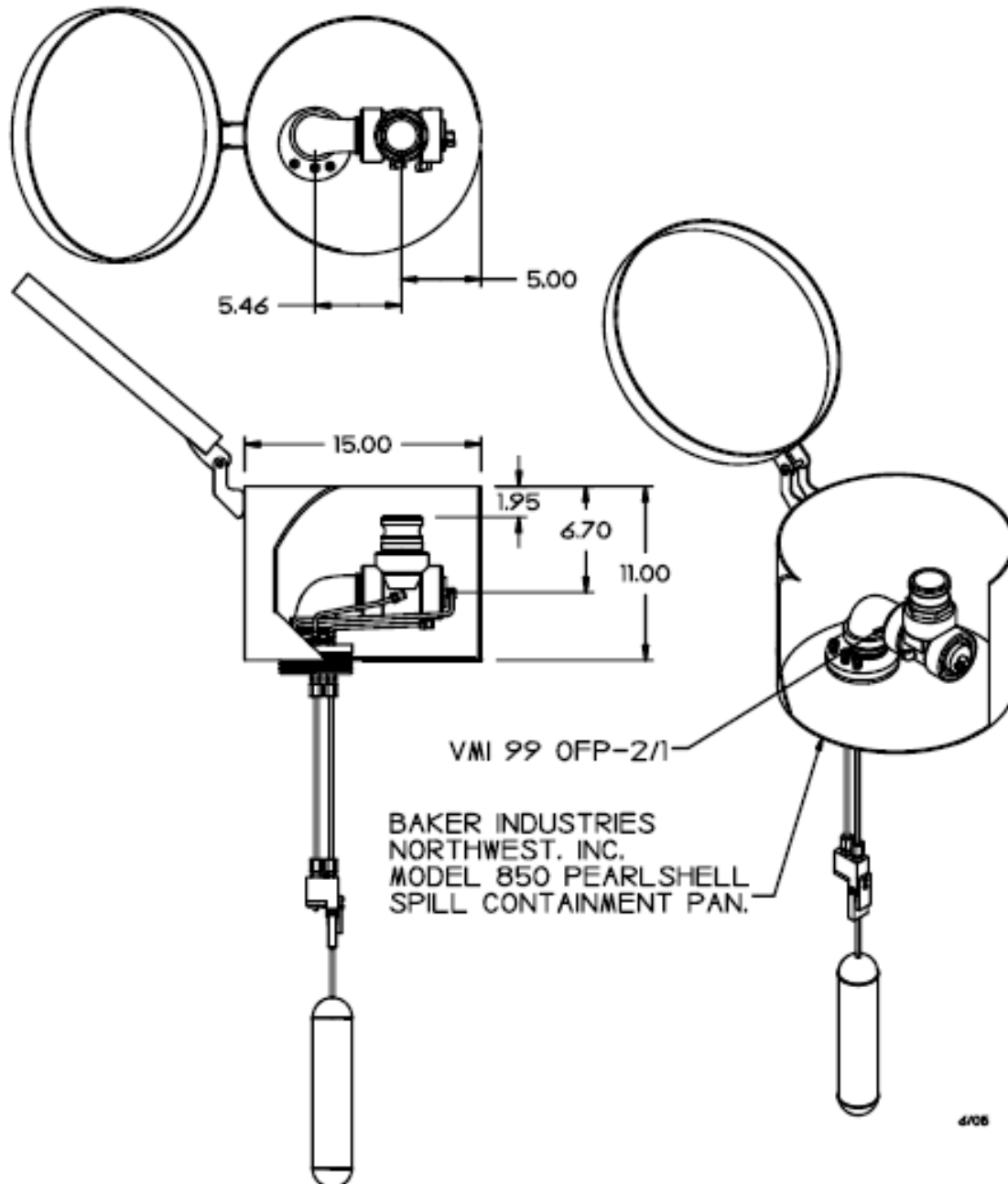


**Quality Petroleum Equipment**  
**Solutions For Over 30 Years**

---

**This page intentionally left blank**

**VMI OFP-2/1**

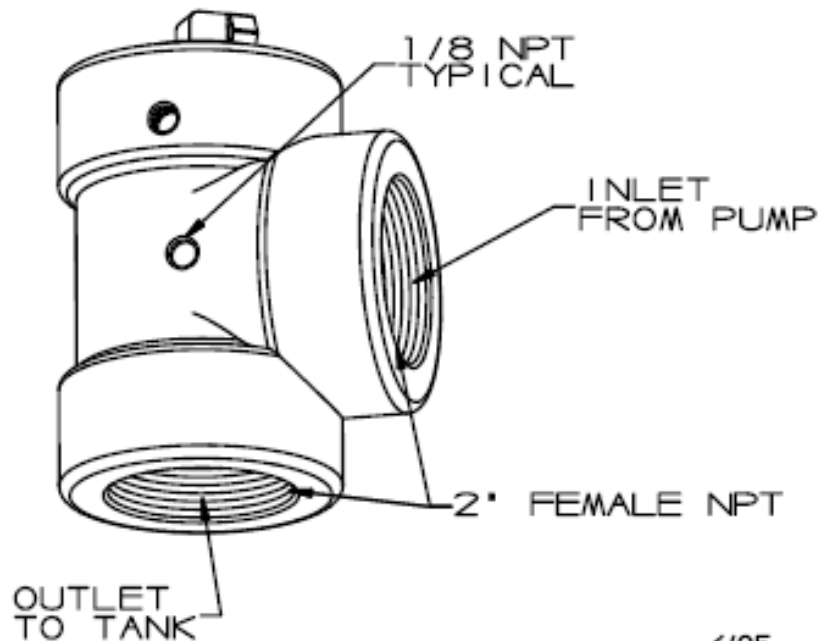
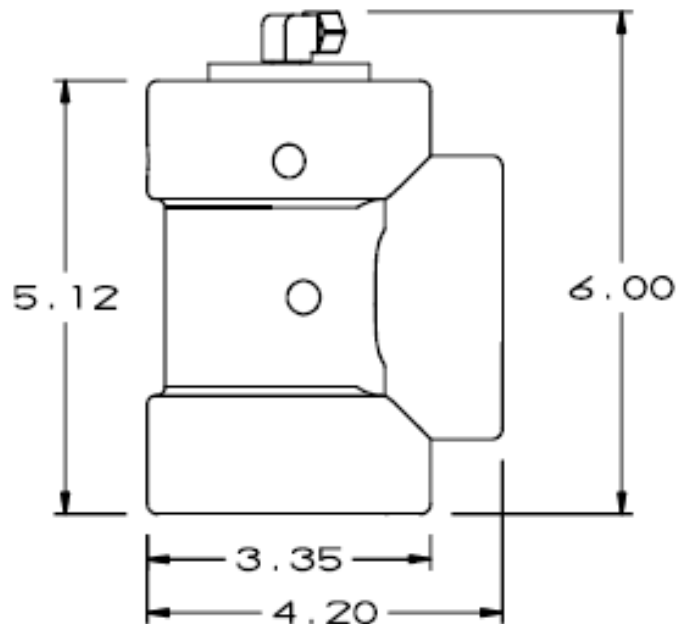


Vaporless Manufacturing, Inc.

8700 East Long Mesa Drive, Prescott Valley, Arizona 86314  
Toll Free: 800.367.0185 Phone: 928.775.5191 Fax: 928.775.5309  
Website: [www.vaporless.com](http://www.vaporless.com) Email: [sales@vaporless.com](mailto:sales@vaporless.com)

Page | 7

## VMI OFP2 HOUSING



6/05