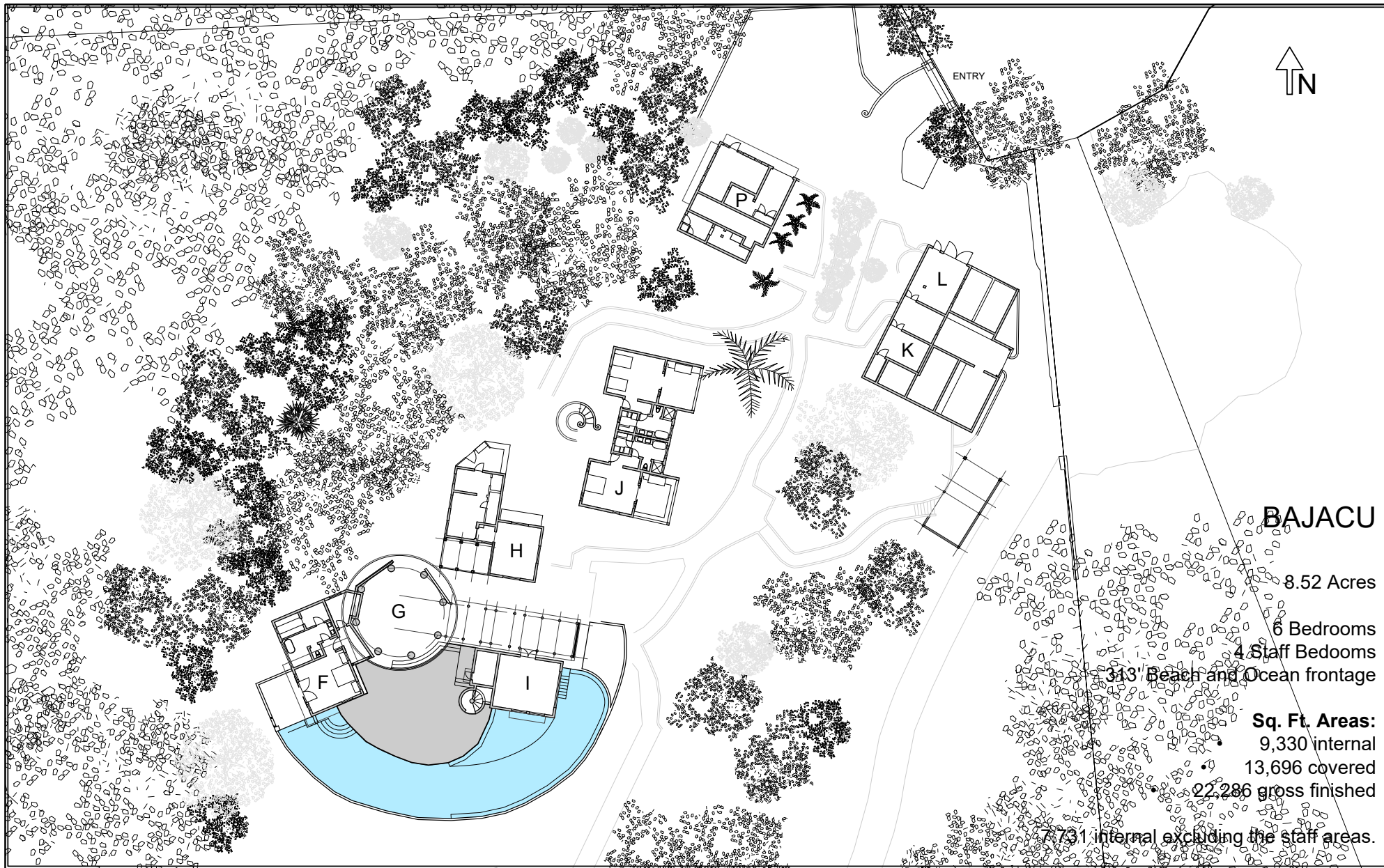


## BAJACU SITE PLAN

- A Beach Club
- B Beach Balinese Daybeds
- C Viewing Platform & Gazebo
- D Jet Ski Dock Area
- E Infinity Pool
- F Master Pavilion & Office
- G Main Living Palapa
- H Kitchen & Dining Pavilion
- I Interior Living & One Bedroom Guest Pavilion
- J Four Bedroom Guest Pavilion
- K Fitness
- L Laundry, Garage, Storage & Workshop
- M Buggy Storage
- N Entrance Gate
- O Four Bedroom Staff Pavilion & Garage
- P Parking







## BAJACU

8.52 Acres

6 Bedrooms

4 Staff Bedrooms

313' Beach and Ocean frontage

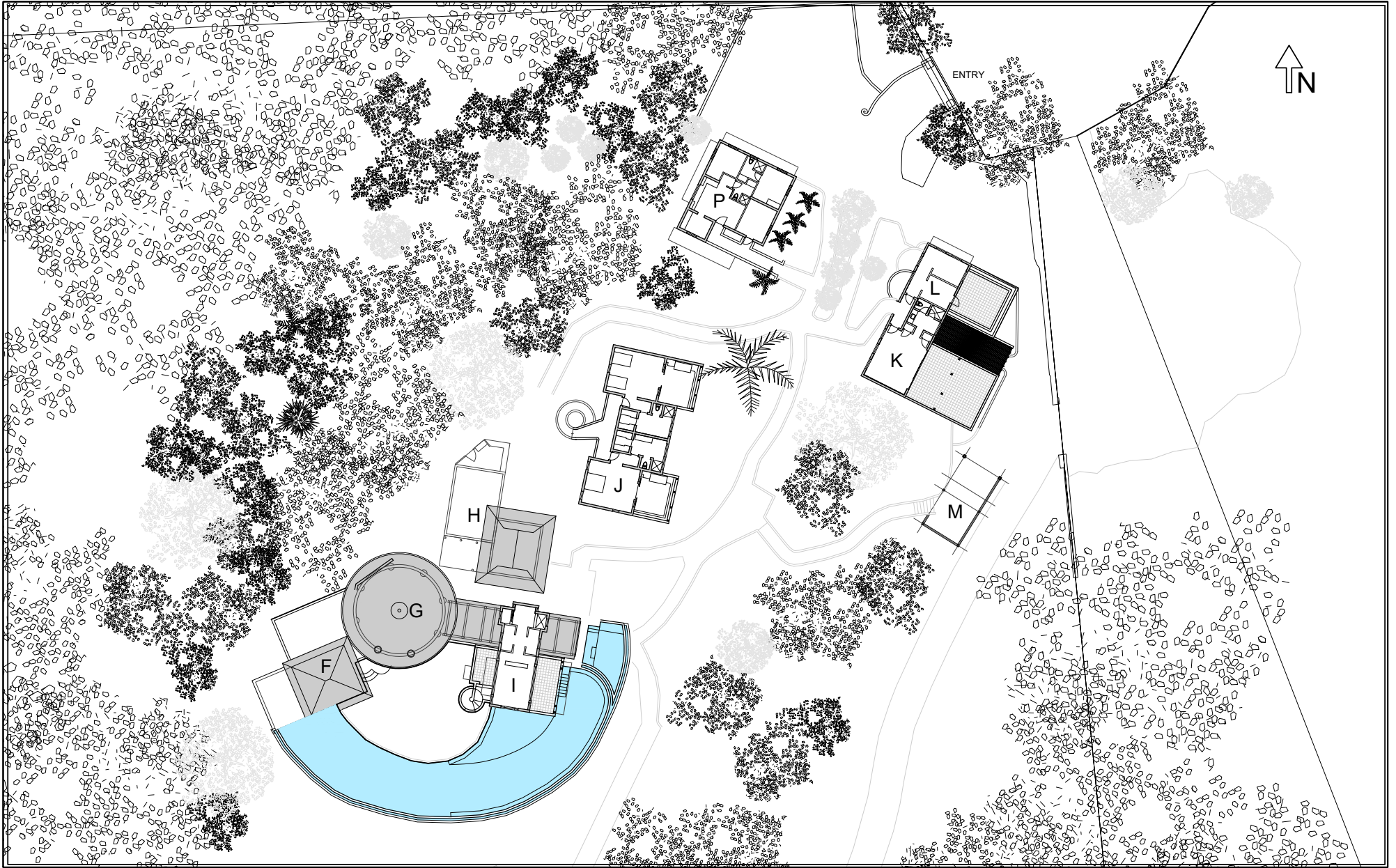
### Sq. Ft. Areas:

9,330 internal

13,696 covered

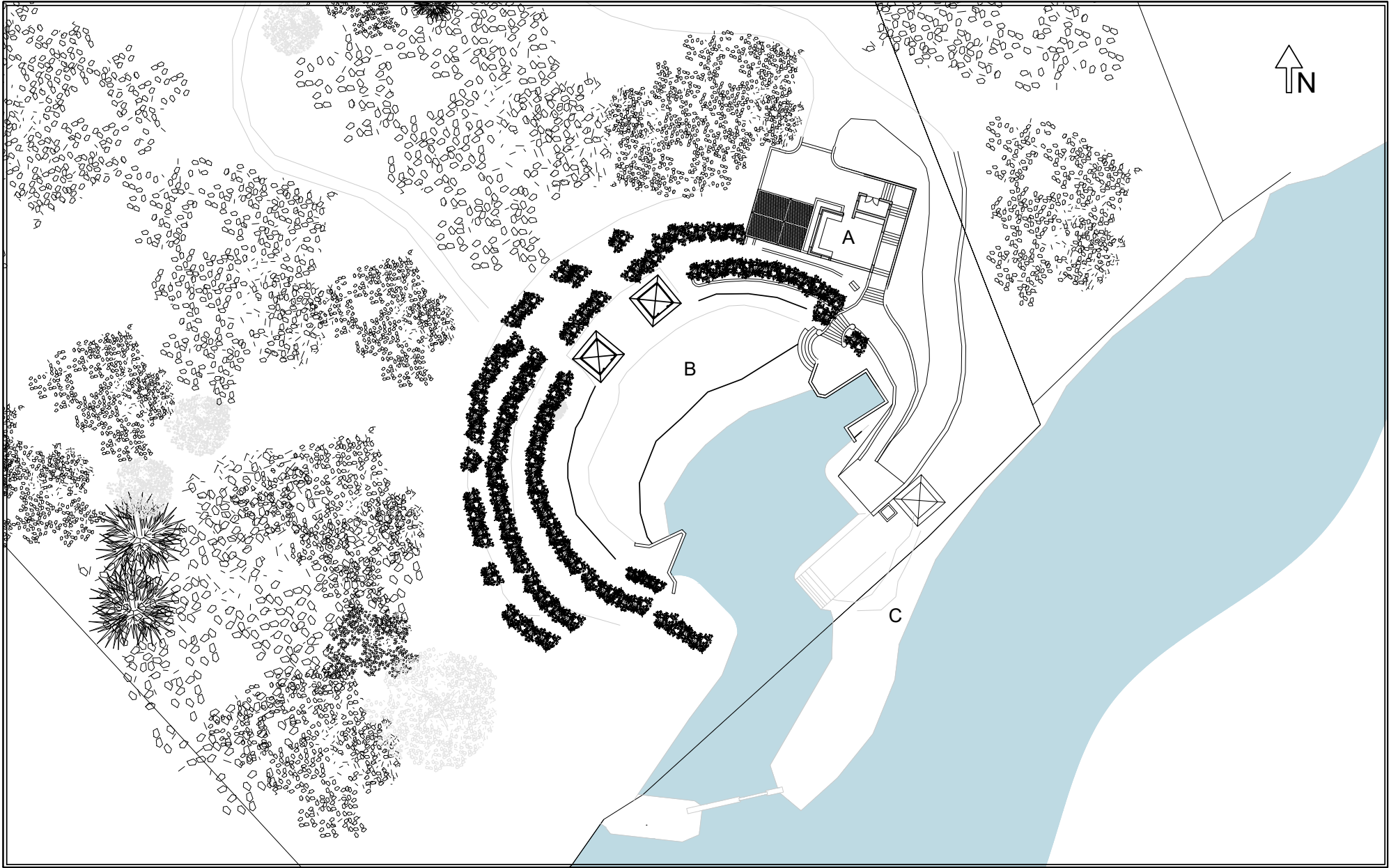
22,286 gross finished

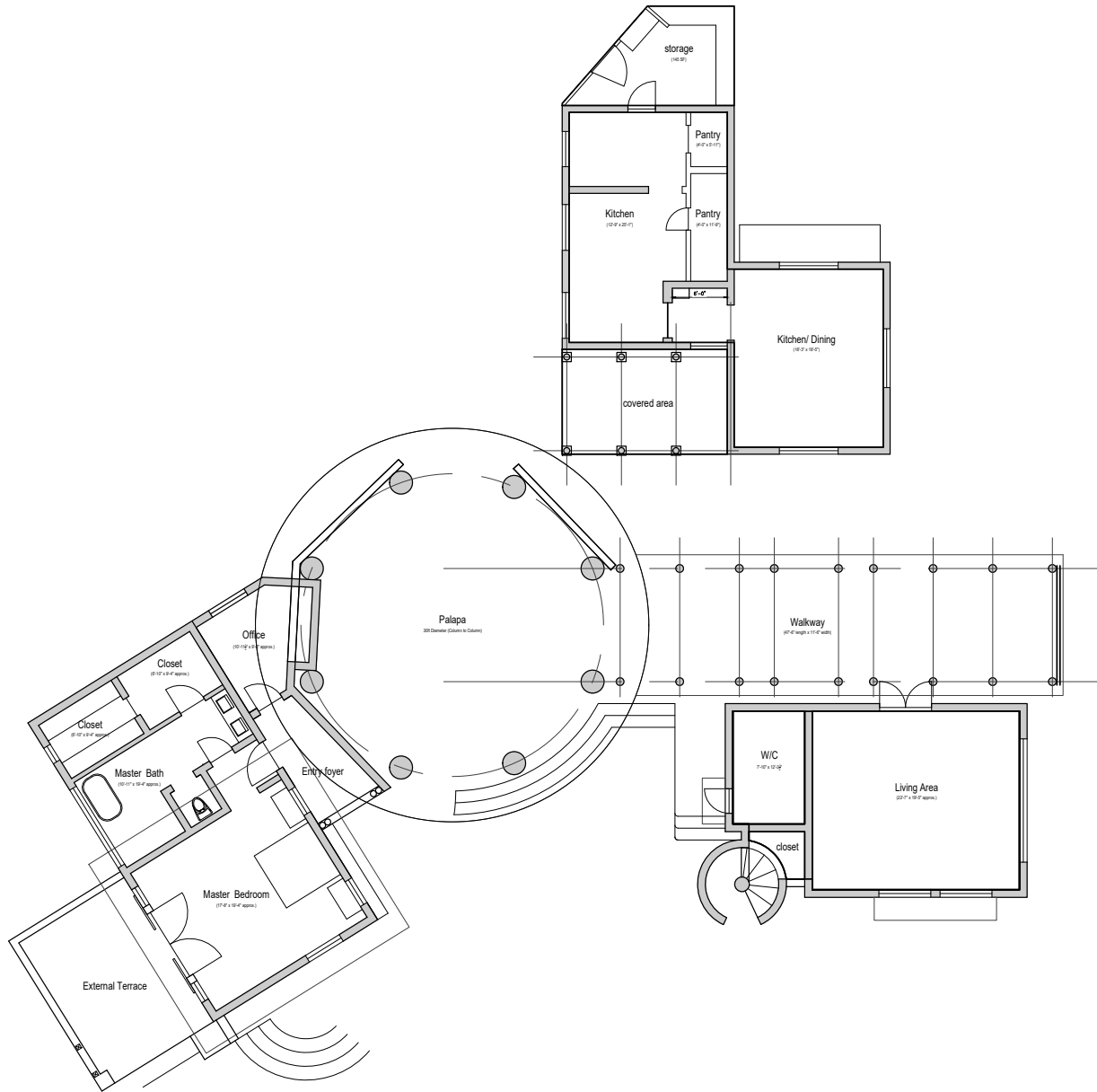
7731 internal excluding the staff areas.

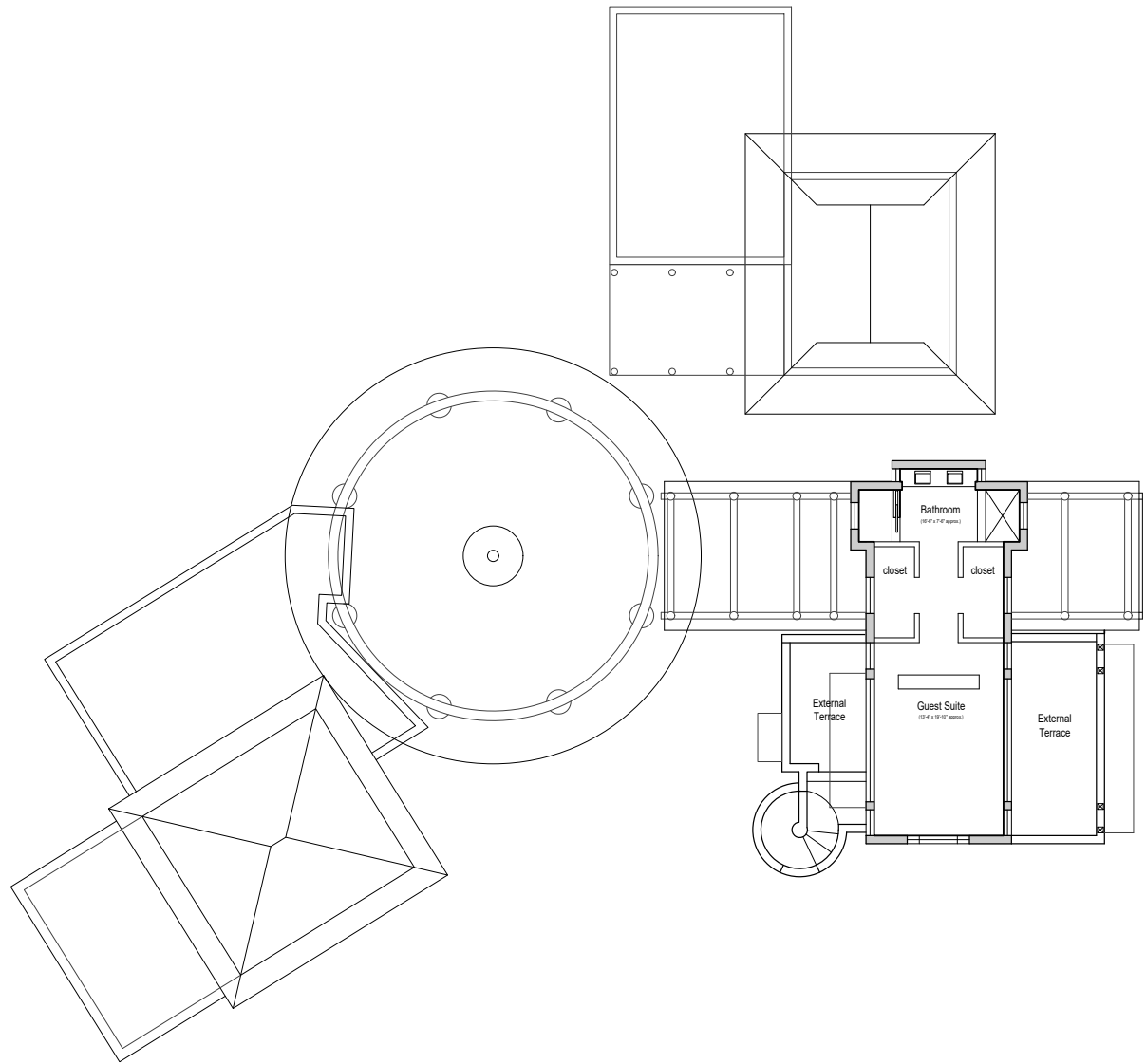


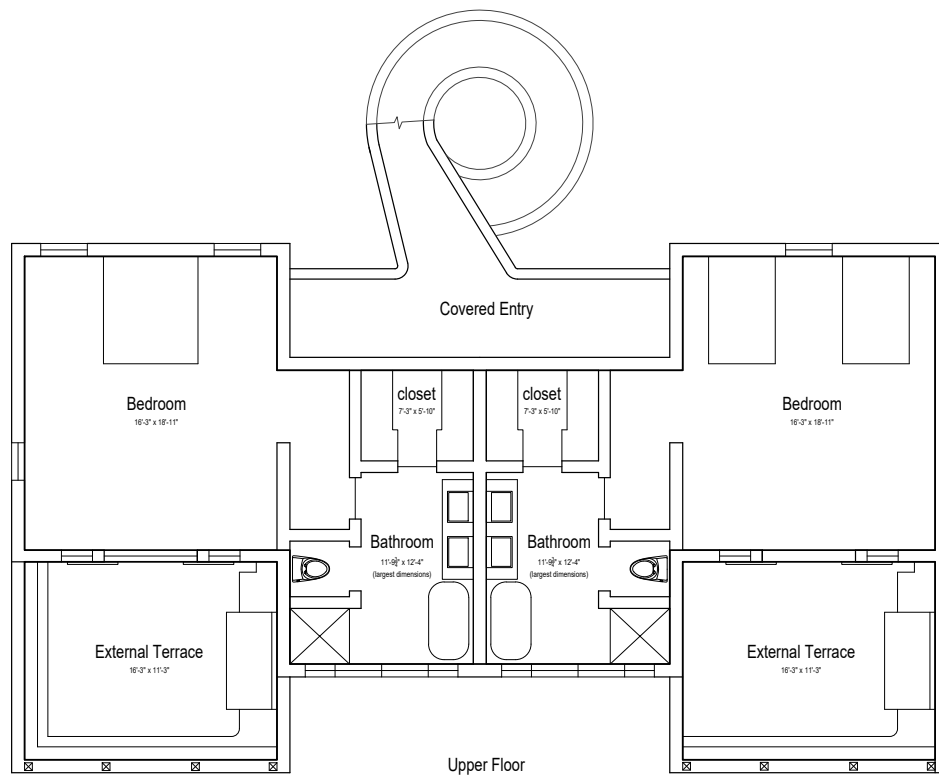
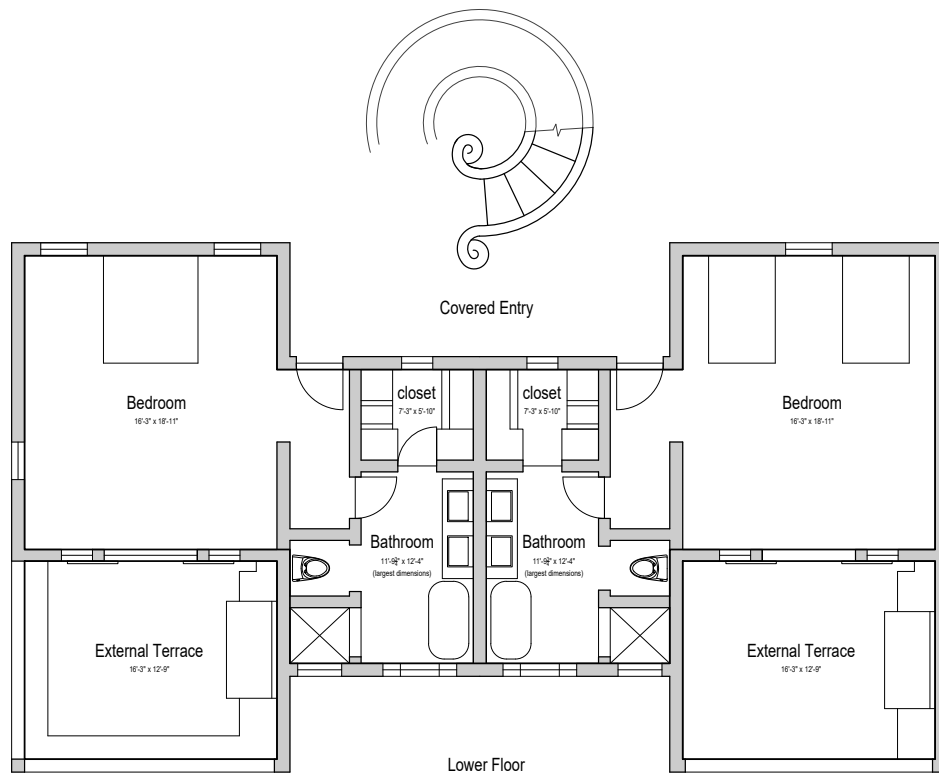




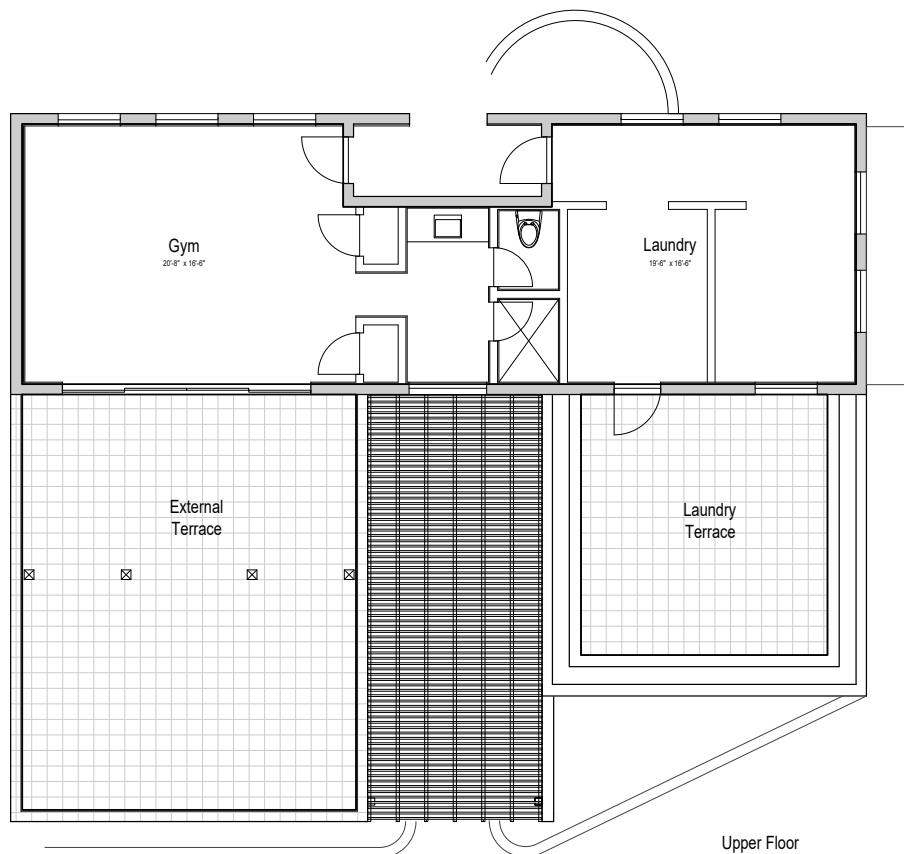
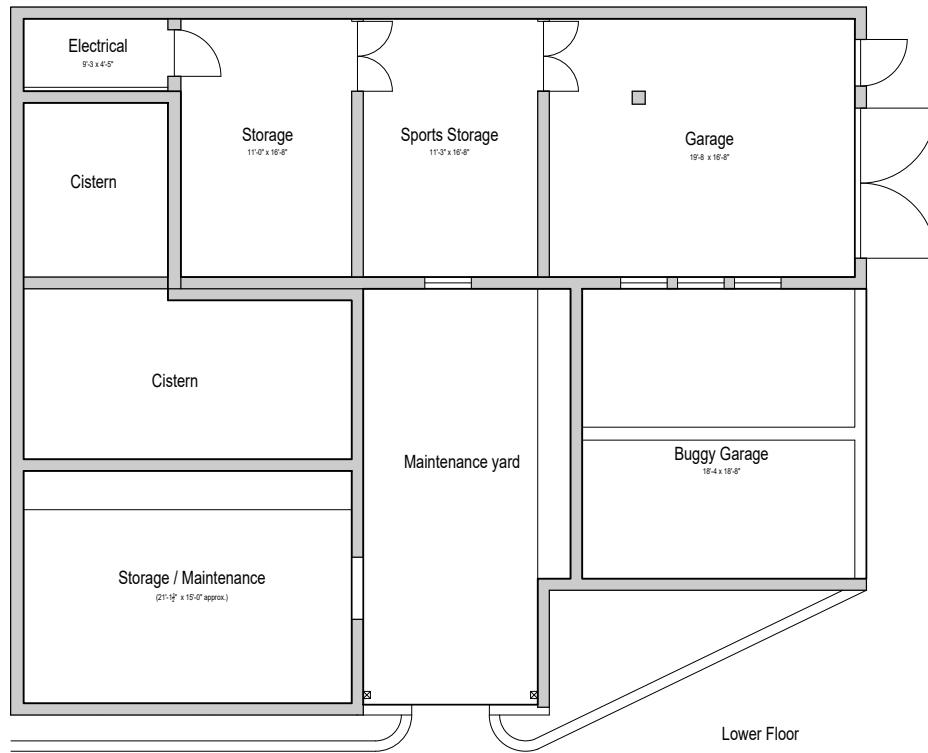


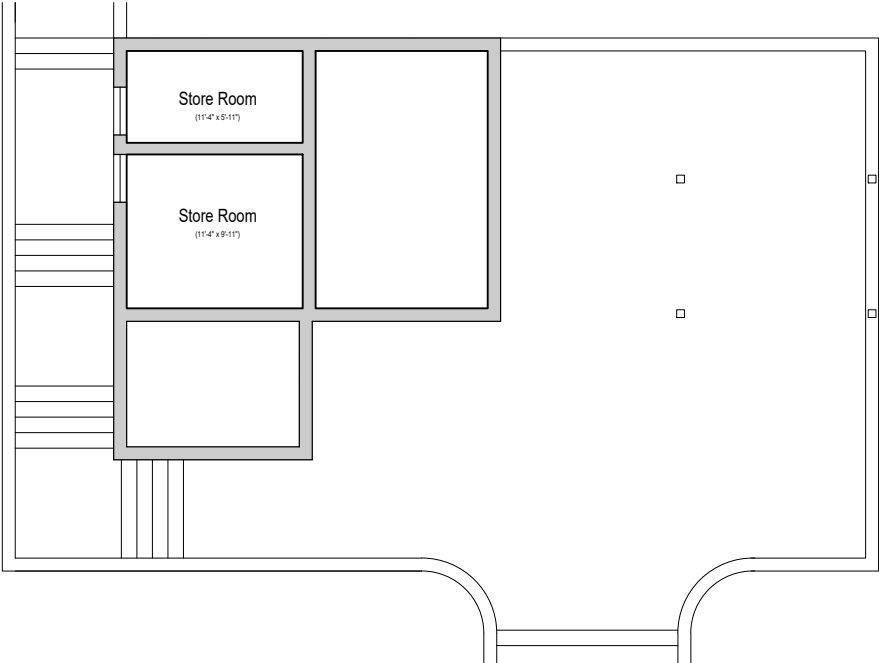




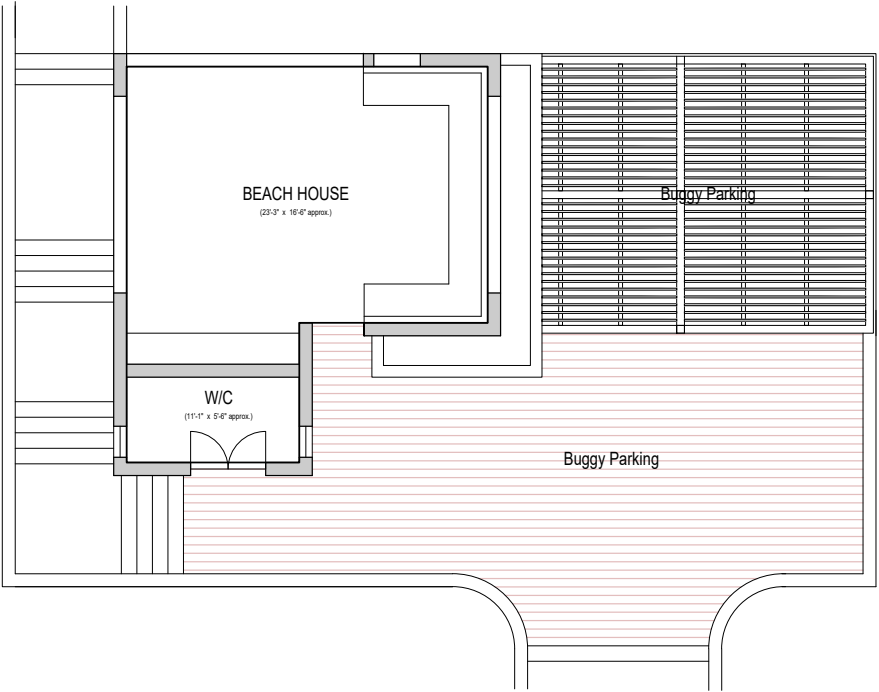




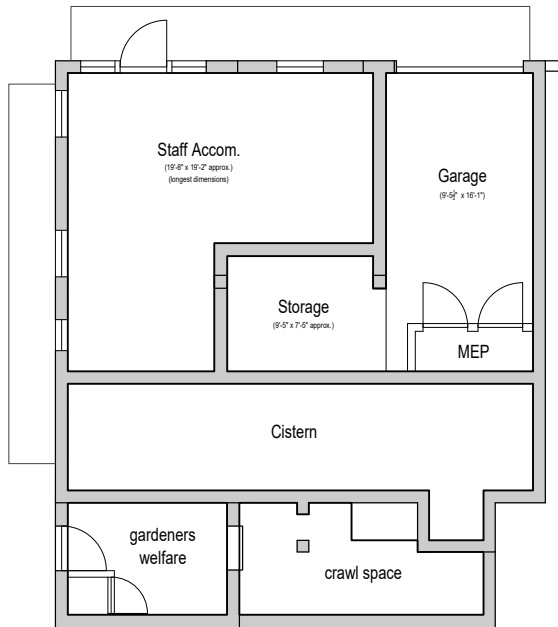




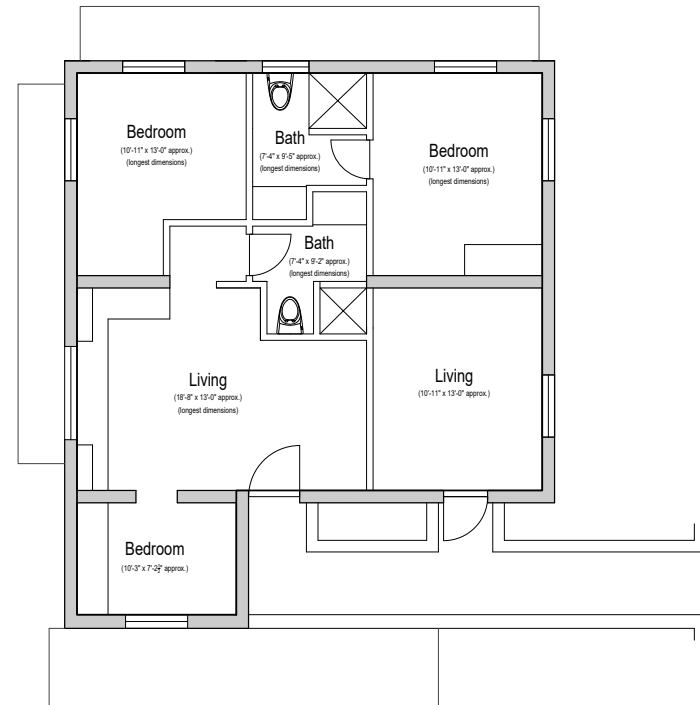
Beach Hut  
(Lower Floor)



Beach Hut  
(Upper Floor)



Lower Floor



Upper Floor