



LENS RTLS

Location Enabled Notification System



Improving Patient And Staff Experiences

Skytron LENS is a Real-Time Location System (RTLS) specifically designed to instantly boost productivity, lower equipment costs, and improve workflow. With this system, LENS offers a flexible design framework with customizable accuracy from zone to chair level that is easy to use and install providing administrators real-time, actionable information to improve business processes that impact patient care and operational efficiency. LENS limits staff frustration by seamlessly integrating into daily routines.

A reliable and intuitive way to measure equipment use while informing designated staff about:

- Location, status and movement of assets
- Equipment par levels fall below safety stock limits
- Rental contracts are about to expire
- Area entry and exit alerting
- Time to perform scheduled preventative maintenance



Infection
Control



Patient
and Staff
Locating



Asset
Tracking and
Management

Streamline Workflows. Reduce Waste.

Enhance awareness and visibility for patient safety and operational efficiency

- Find critical resources (assets and people)
- Know the status of resources
- Create a more efficient environment for staff
- Monitor, control and optimize inventory
- Improve workflow and streamline business processes
- Implement data-driven improvement

Par Level Management

Refresh

Location

Asset Group

Alert Triggered

Start Date

End Date

-All-

-All-

-All-

01/01/1970

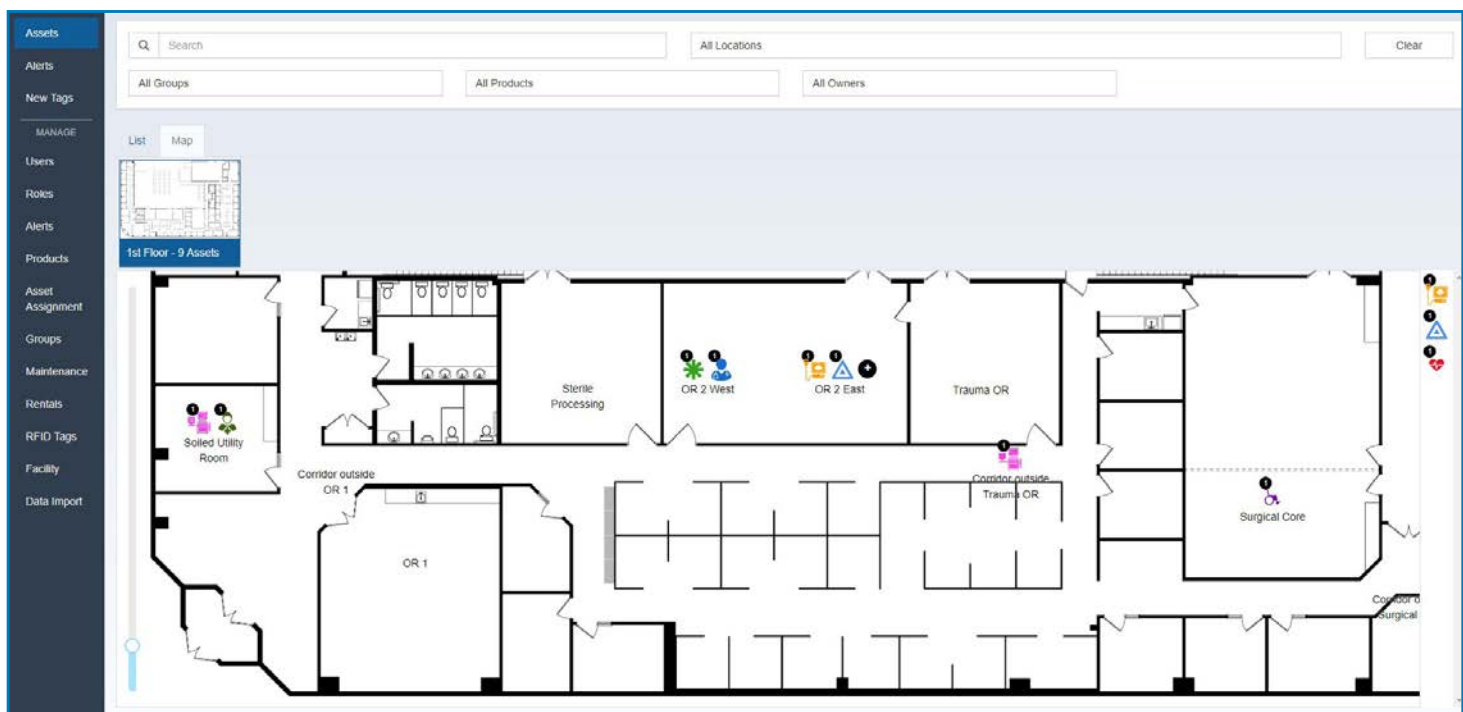
01/01/2050

Par Level Current Status

Status

-All-

asset group	location	min	max	count	status	reported time
Search...						
IV Pumps	Hospital First Floor Soiled Utility	2	3	0	Shortage	06/06/18 19:52
IV Pumps	Hospital Second Floor Soiled Utility	1	2	3	Surplus	11/06/18 19:00
All Knee Rests	Hospital First Floor Clean Room	1	2	3	Surplus	06/06/18 19:49
Knee Rests	Hospital First Floor Operating Room	3	10	0	Shortage	11/06/18 14:03
Knee Rests	Hospital Second Floor Supply	0	1	0	OK	11/06/18 14:03
Knee Rests	Hospital Second Floor Storage Core	0	2	0	OK	11/06/18 14:03
Knee Rests	Hospital Second Floor Clean Room	1	10	0	Shortage	11/06/18 14:03
Knee Rests		1	2	3	Surplus	11/06/18 14:03





Asset Tracking

Real-time location of critical mobile assets. Reduce search time and staff frustration. Increase patient care quality and experience. Easily locate assets for preventive maintenance cycles.

"Since implementation, we are able to deliver equipment direct to the patient's bedside in a timely fashion and provide quality patient care."

- Asst. VP of Patient Care Services

Assets	Search	All Locations
Alerts	All Groups	All Products
New Tags	All Owners	
MANAGE		
Users	List	Map
Roles		
Alerts		
Products		
Asset Assignment		
Groups		
Maintenance		
Rentals		
RFID Tags		
Facility		
Data Import		

ACN1	RFID	Product	Location
Video Cart 1	313529	Video Cart	Hospital > 1st Floor > OR 2 West
Infusion Pump	307339	Infusion Pump	Hospital > 1st Floor > OR 2 East
X1234	1947846	Wheelchair	Hospital > 1st Floor > Surgical Core
W1234	1947994	Ultrasound	Hospital > 1st Floor > OR 2 East
335-9968	1947532	Telemetry Unit	Hospital > 1st Floor > Surgical Core
49-888974	1947247	Crash Cart	Hospital > 1st Floor > OR 2 East
335-6664	1947484	Telemetry Unit	Hospital > 1st Floor > Soiled Utility Room
Smith, Josee	1944322	Staff, Surgery	Hospital > 1st Floor > Surgical Core
Daniel, Richard	1947632	Staff, EVS	Hospital > 1st Floor > Soiled Utility Room

Asset Management

Identify, manage and measure asset status, utilization rates, automated alerts, and par levels.

"It allows me to attend to my patients instead of looking all over the hospital for equipment. Especially here in the ICU, it's a matter of life or death."

- ICU Staff Nurse

Assets	Search	All Locations
Alerts	All Alerts	All Groups
New Tags	All Products	
MANAGE		
Users	List	Map
Roles		
Alerts		
Products		
Asset Assignment		
Groups		
Maintenance		
Rentals		
RFID Tags		
Facility		

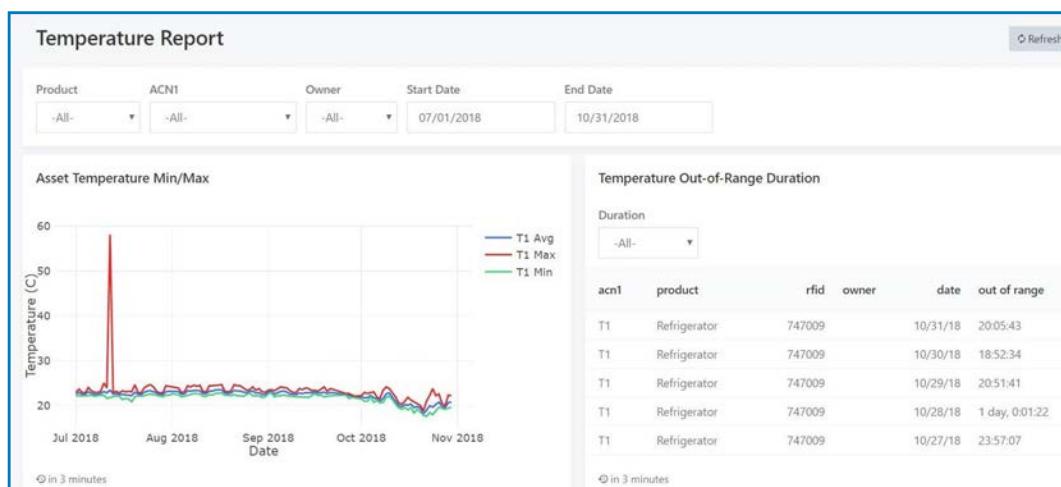
Alert	Type	ACN1	RFID	Product	Location	Alert Time	State
All Buttons	Button Press	ST1	2501054	Surgical Table	Hospital > First Floor > River Street Entrance	2018-05-16 1...	Resolved
All Buttons	Button Press	W1	1843295	Wheelchair	4th Floor, East Wing	2018-07-02 1...	Standard
Fridge Tempe...	Temperature	T1	747009	Refrigerator	Hospital > First Floor > Reception	2018-10-15 1...	Active
All Buttons	Button Press	K2	2118676	18in Foot Extension	Hospital > First Floor > River Street Entrance	2018-10-17 2...	Resolved
All Buttons	Button Press	K1	773900	Staff, Environmental ...	Hospital > First Floor > Reception	2018-10-17 2...	Standard
All Buttons	Button Press	W2	1804738	Wheelchair	Hospital > First Floor > River Street Entrance	2018-07-12 1...	Resolved
All Buttons	Button Press	W4	2013180	Wheelchair	Hospital > First Floor > River Street Entrance	2018-12-04 3...	Resolved

Staff and Patient Locating

Maximize the most critical asset, your staff, by assessing workflow for bottlenecks and reducing unnecessary pages for an enhanced patient experience. Able to review patient location history to examine care delivery, trend and identify improvement opportunities.

"A staff duress button provides the ability for the staff to summon help at some point of the procedure."

-Asst. VP of Patient Care Services



Environmental Monitoring

Eliminate labor-intensive manual temperature logging, automate active alerting, and comply with regulatory requirements.

"The solution has allowed us to deliver consistent quality care throughout our facility."

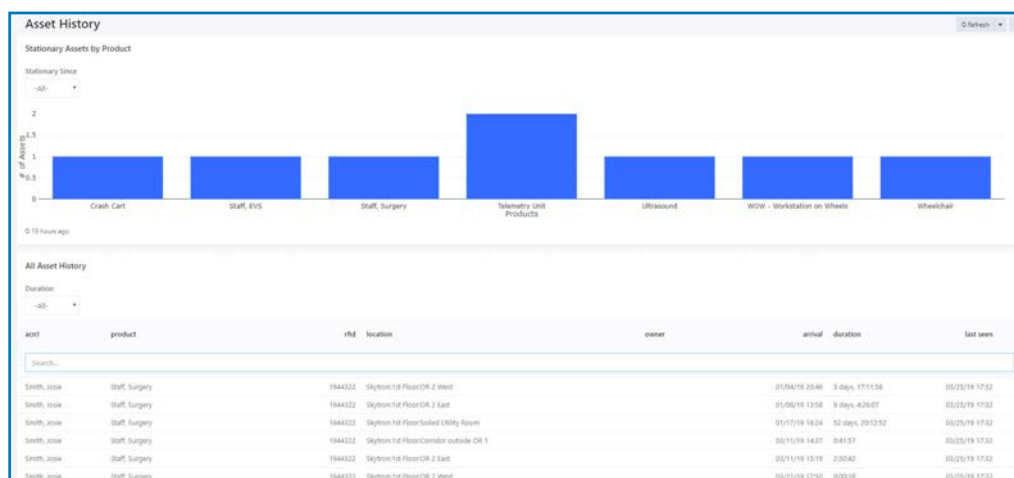
- Asst. VP of Patient Care Services

Infection Control

Access interaction history between patients, staff and equipment to contain infectious outbreaks.

"We can also see the history of the equipment, where it has been, who it has been on, what room it has been in."

- Administrative Assistant



Optimize Your Investment

Skytron is a full-service provider with over 12 years of healthcare RTLS expertise. We not only guide our clients through the configuration and implementation of the solution that best meets their needs, but we also fully support both hardware and software. Skytron continues to review the solution with you regularly to ensure long term optimization and system benefits through an inclusive Service Level Agreement (SLA).



Comprehensive Support

Available services include

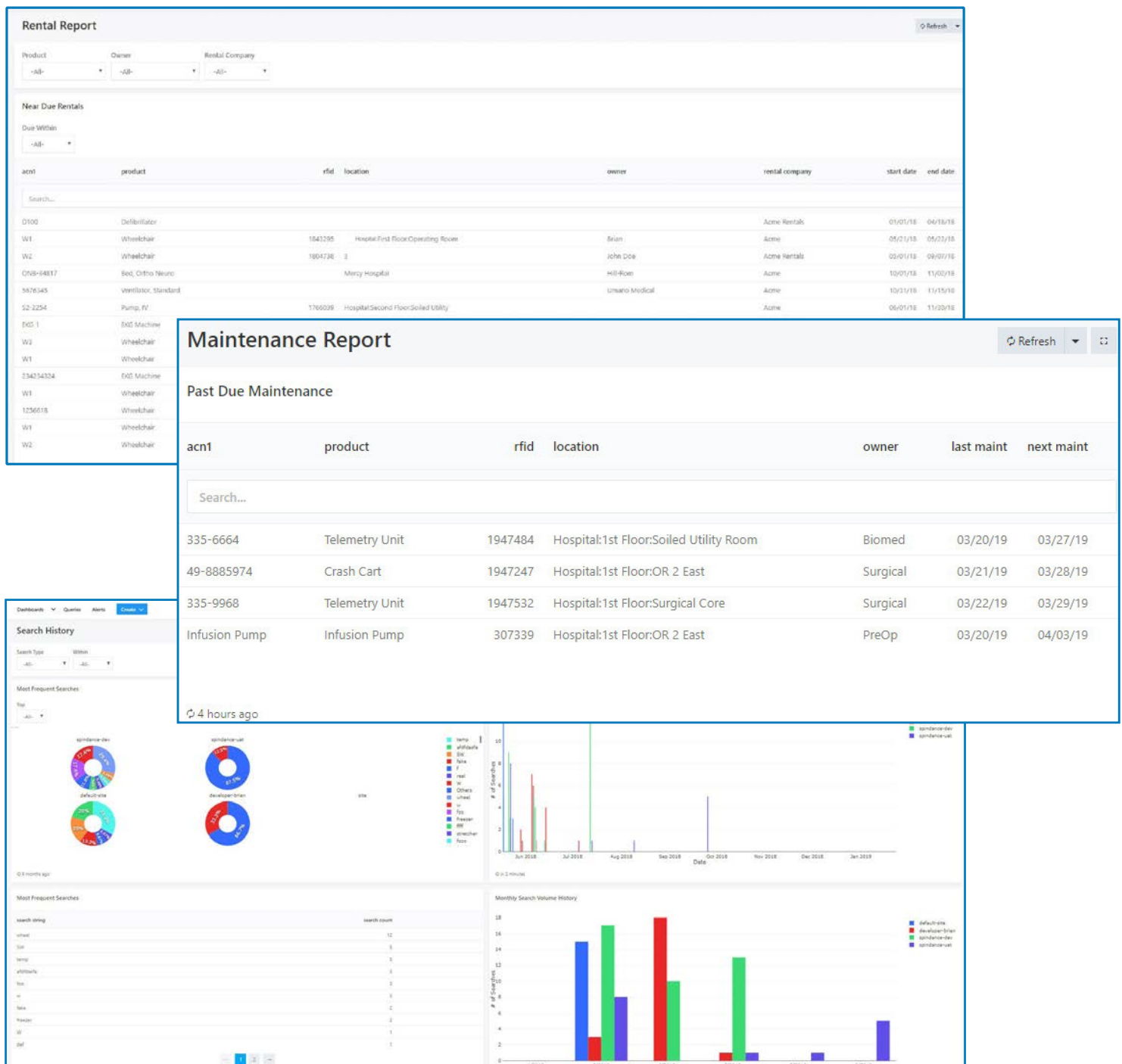
- System design
- Implementation
- Battery management
- Ongoing network support
- Remote monitoring
- Data storage
- Software support
- User training
- Regular on-site visits
- Recurring business reviews
- 24/7 emergency technical support



Interactive Dashboards

In addition to system support, the Skytron LENS Software and Service Level Agreement (SLA) provides data storage and ongoing access to a broad menu of web-based dashboards and reports.

- Review historic data for trends and outliers
- Sort and filter for specific data criteria
- Export key reports and logs
- Support process improvement initiatives with real data and benchmarking





Circle of Clinical Business Intelligence



Skyvison

Vendor Neutral Design
Easy to Use Interface



Flat Screen Displays

4K & HD Models Available
Fully Flush—Hygienic Design



LENS RTLS

Manage Assets with Ease
Track Potential Infections

Skytron is the Healthcare Efficiency Specialist, providing full-room solutions of capital equipment, architectural and real-time information systems for Medical, Surgical, Sterile Processing, and Infection Prevention. Our solutions enhance the utilization of people, facilities, and capital because they are designed with the user in mind and have a low, long-term cost of ownership.

To learn more, visit our website at www.skytron.com



5085 Corporate Exchange Blvd. SE
Grand Rapids, MI 49512
1.800.SKYTRON (759-8766)
email: info@skytron.com
www.skytron.com



REVO 3-19
PN L2-010-166