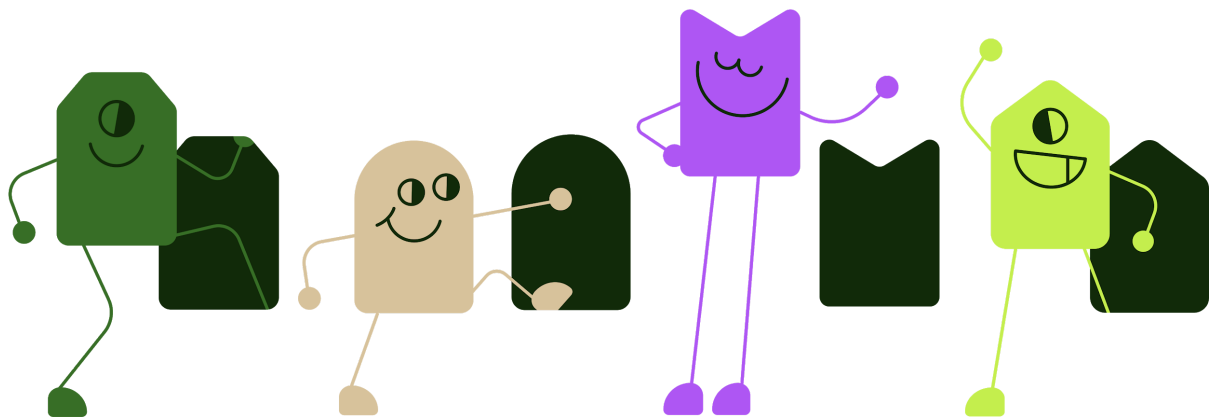


# How to onboard Dormakaba Exivo with Unloc



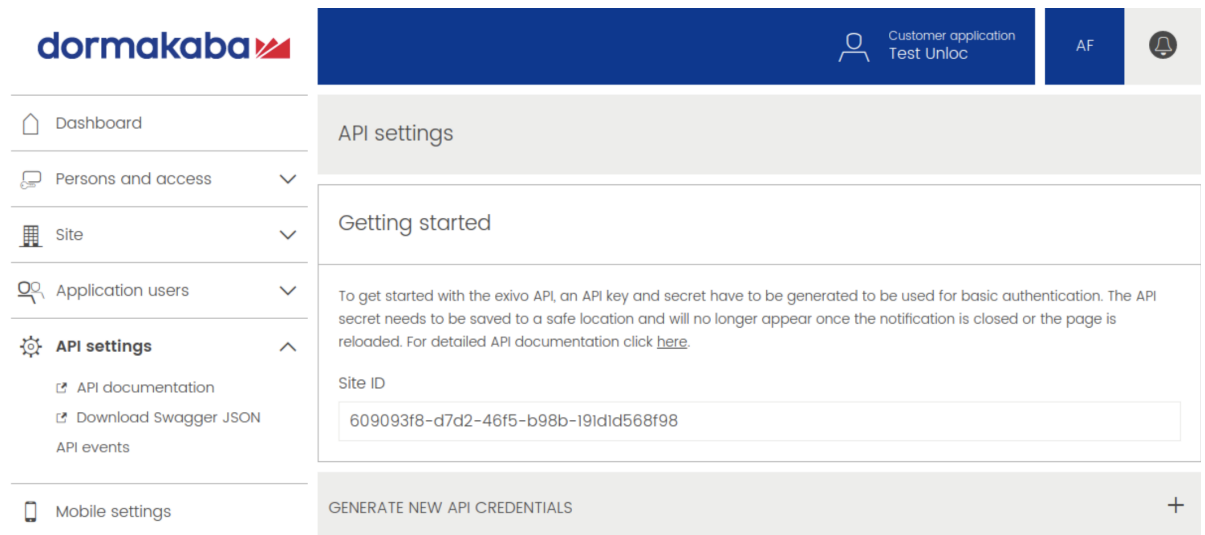
## Requirements

A Dormakaba-Exivo installation can connect to Unloc, given the following requirements:

1. Must have admin user that can log in to <https://customer.exivo.io>

## Site configuration

1. Log in to <https://customer.exivo.io> with your admin user account
2. Click on “API settings” on the left side



3. Click the “GENERATE NEW API CREDENTIALS”
4. Give the credentials a fitting name, like “Unloc integration”, then click “GENERATE”
5. Unloc will need these credentials to connect to this site, so; Copy and forward the generated credentials (API key, API secret), the System ID, and a desired name for this site to Unloc so Unloc can finish the connection.