

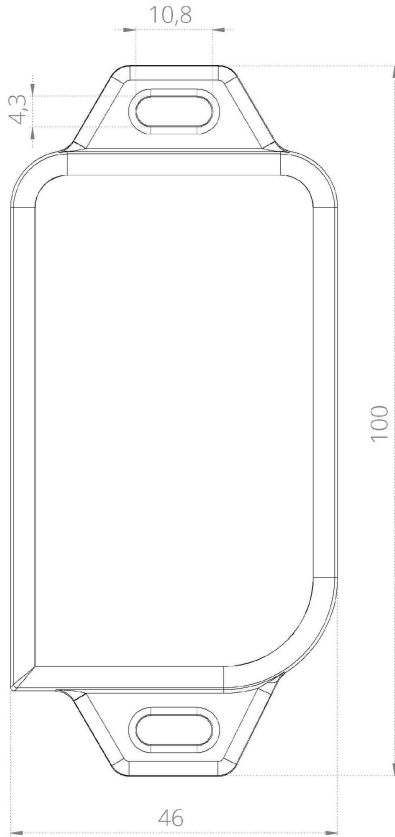


BLE Network Tag Large

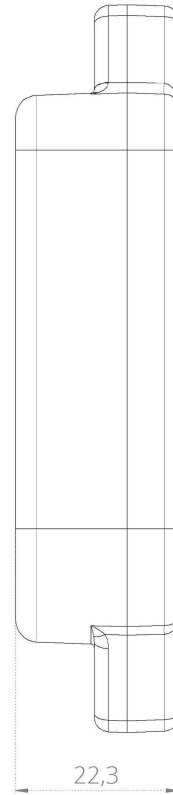
Small & portable device
which pinpoints the
location of its bearer

Key features

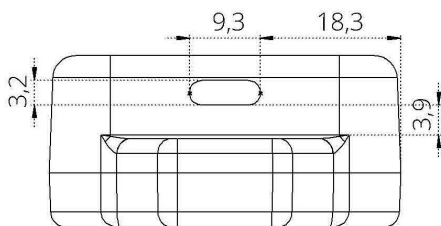
- Compatible with Ubudu BLE V1 (uplink) setups
- Firmware upgradeable
- Built-in accelerometer
- LED visual indicator
- Attachable form factor
- 46+ months autonomy, depending on scenario
- Powered by 2000mAh battery rechargeable via USB-C
- Designed & manufactured in EU
- Each unit carefully tested
- 1 year warranty
- CE certified
- Dimensions 100 x 46 x 22.3mm
- 66g weight
- IP40 ready for industrial areas
- IP63 optional
- Operating temperature: -20°C ÷ 40°C
- Available in white
- Accessories available



Front view



Side view



USB-C port side view

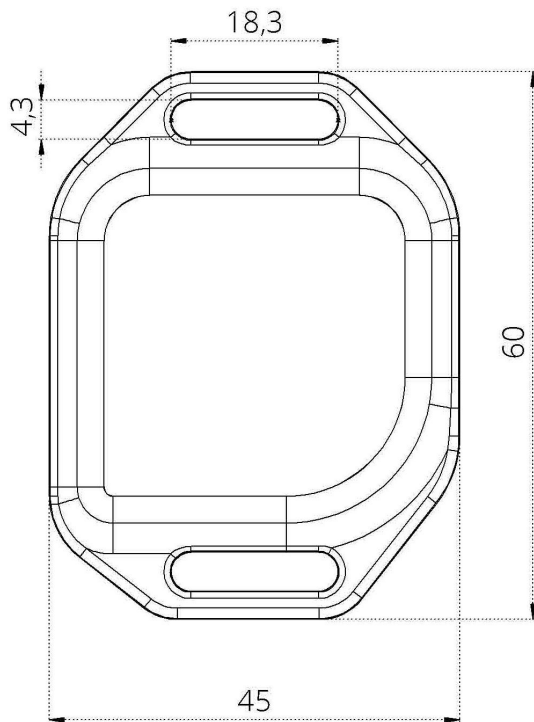


BLE Network Tag Medium

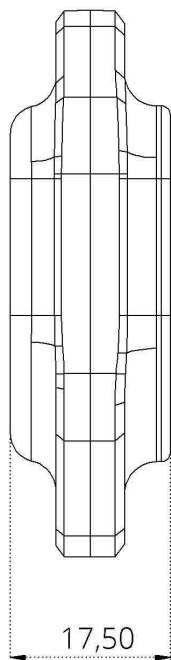
Small & portable device
which pinpoints the
location of its bearer

Key features

- Compatible with Ubudu BLE V1 (uplink) setups
- Firmware upgradeable
- Built-in accelerometer
- LED visual indicator
- Attachable & wearable form factor
- 23+ months autonomy, depending on scenario
- Powered by 850mAh battery rechargeable via USB-C
- Designed & manufactured in EU
- Each unit carefully tested
- 1 year warranty
- Dimensions 60 x 45 x 17.5mm
- Weight ~42g
- CE certified
- IP40 ready for industrial areas
- IP63 optional
- Oper. temp. $-20^{\circ}\text{C} \div 40^{\circ}\text{C}$
- Available in white
- Accessories available



Front view



Side view