



DREAMSCAPE

ICONIC ARCHITECTURE

Exquisite architecture of ample volumes created in magical surroundings of lush vegetation, spas and pools. Ocean views perched above the 14th fairway. A five building Master planned design each with four floors situated amongst the pristine Bahia Principe jungle.



GUERRERO &
JÜNEMANN
arquitectos asociados



WWW.THEPENINSULATULUM.COM



MAGICAL SURROUNDINGS

Superb beaches, white sand and turquoise waters. Tulum, Chichen Itza, Coba, enigmatic Mayan ruins amid virgin jungles. Sian Ka'an Bio reserve and breathtaking natural parks recognized by Unesco. Qualities of a world class destination and a uniquely situated sliver of paradise.





THE PENINSULA OUTSTANDINGLY NATURAL DESTINATION

This exceptional development is located overlooking the 14th fairway of the Bahia Principe Championship golf course. With incredible sites awaiting discovery: the Caribbean Ocean, powder white sand beaches and cenotes. In a calm, secure and relaxing setting

LEISURE & PRIVACY

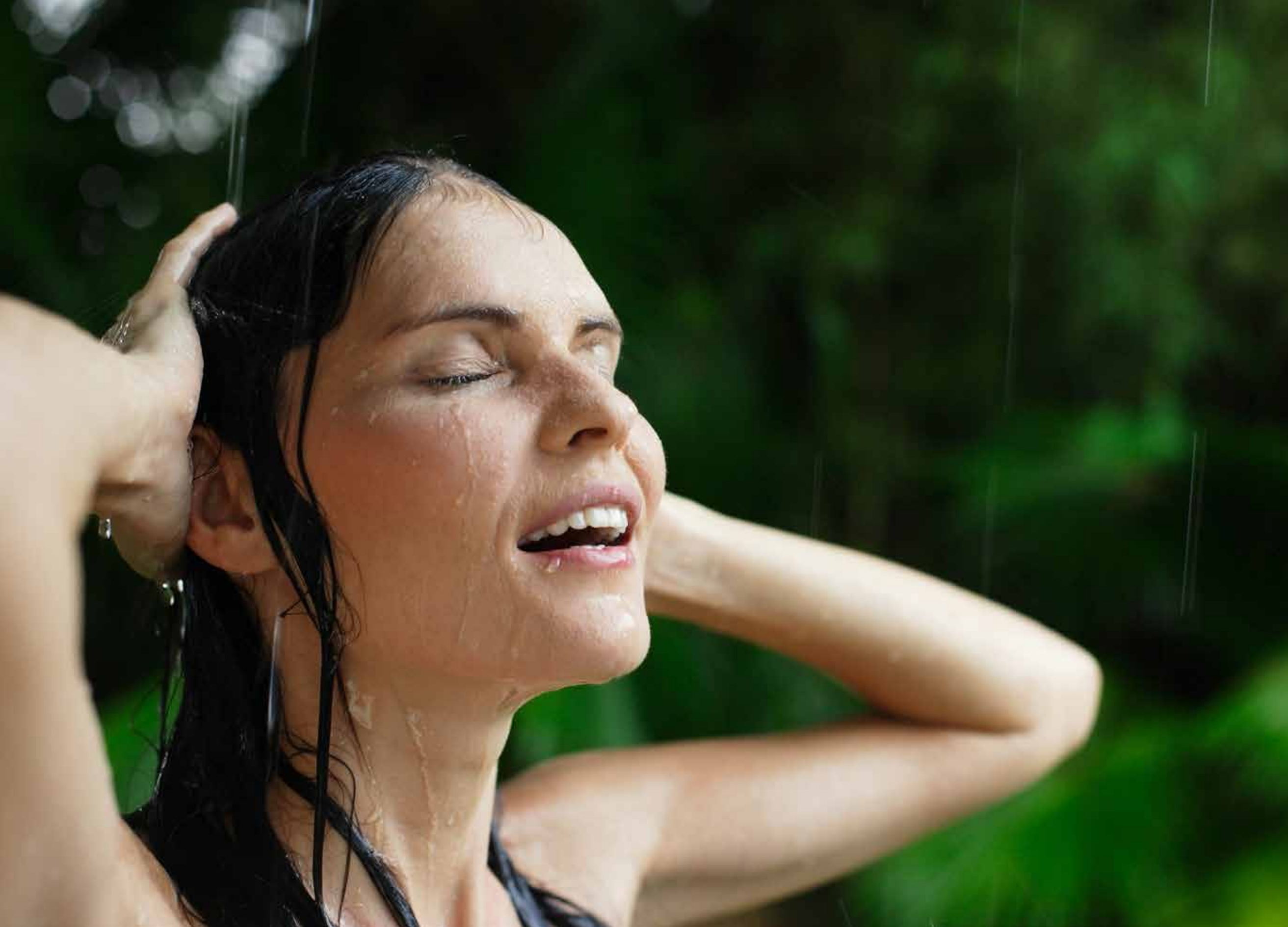
Welcome to our jungle garden The Peninsula, where life happens in the tranquility of the forest and at the speed of a golf cart.



GOLF

The most challenging 18 hole golf course in the Mayan Riviera designed by the renowned Robert Trent Jones III paired with a similarly demanding executive par 3 course. Long fairways snaking through the Mayan jungle, lakes and cenotes make these courses exceptionally tough that could only exist in Mexico.



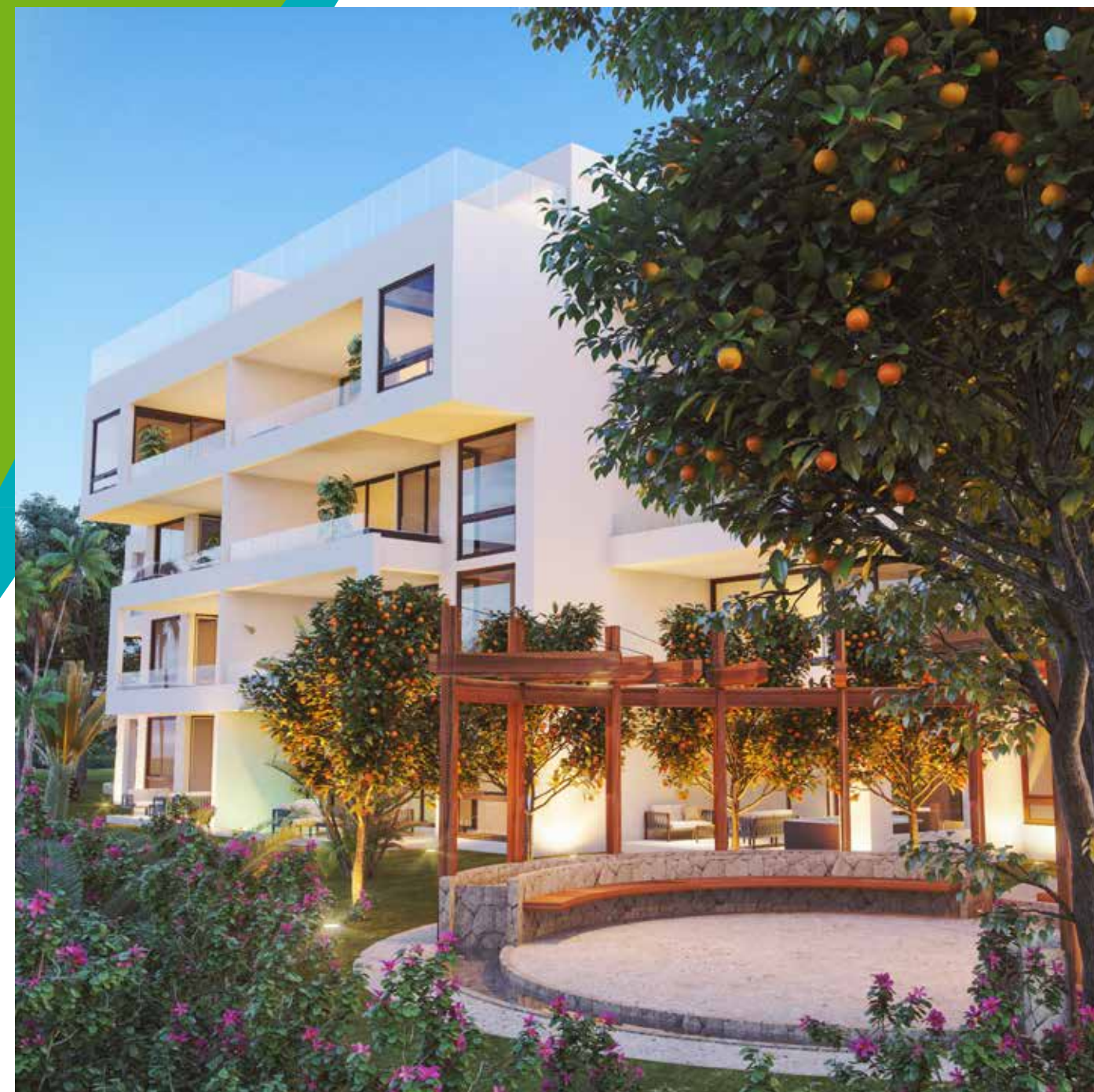


JUNGLE AND WATER

Two pools surrounded by a wilderness playground overlooking the stunning golf course.



Garden residences are fitted with splash pools with direct access to manicured gardens while second and third floor suites offer ample terraces with integrated Jacuzzi's. Impressive two-floor penthouses boast private rooftop spas, pools and cabanas with built in barbeques for unforgettable entertaining.



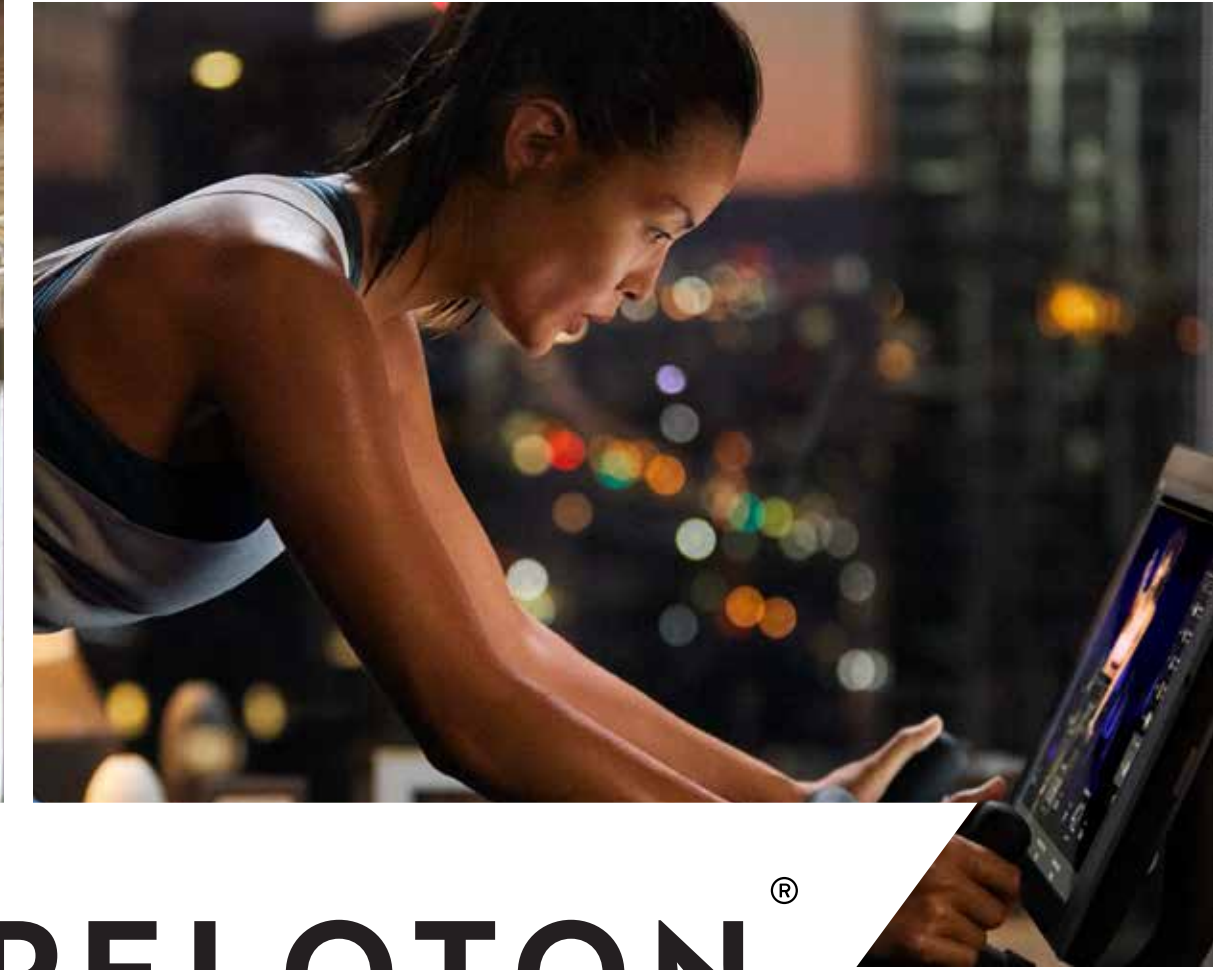
TIME FOR YOU... NAMASTE

Begin your day with a yoga session and a relaxing steam, now your ready for the refreshing pools: sun & cocktails. Lunch on the terrace and sunset in gardens surrounded by citrus and jasmine.



A PLACE FOR YOUR SENSES

Yoga, saunas and steam baths are where you relax: spaces that caress your senses. The Peninsula's first in kind interactive fitness studio features Peloton cycles and treadmills that will allow you to connect to fitness instructors around the world both in real time and via a library to bring out the most efficient version of you. Supple common spaces and gardens lined with citrus trees. A magical environment of incredible natural beauty embraced in tranquility in the premier gated community of Bahia Principe.





LARGE BRIGHT SPACES

Exquisite finishes throughout generous spaces.
Share in the abundance of nature from your home.





DESIGN

Large floor-to-ceiling windows and tempered glass railings. Modern luminous spaces.
Ample walk-in closets, and grand terraces for serene shared moments.



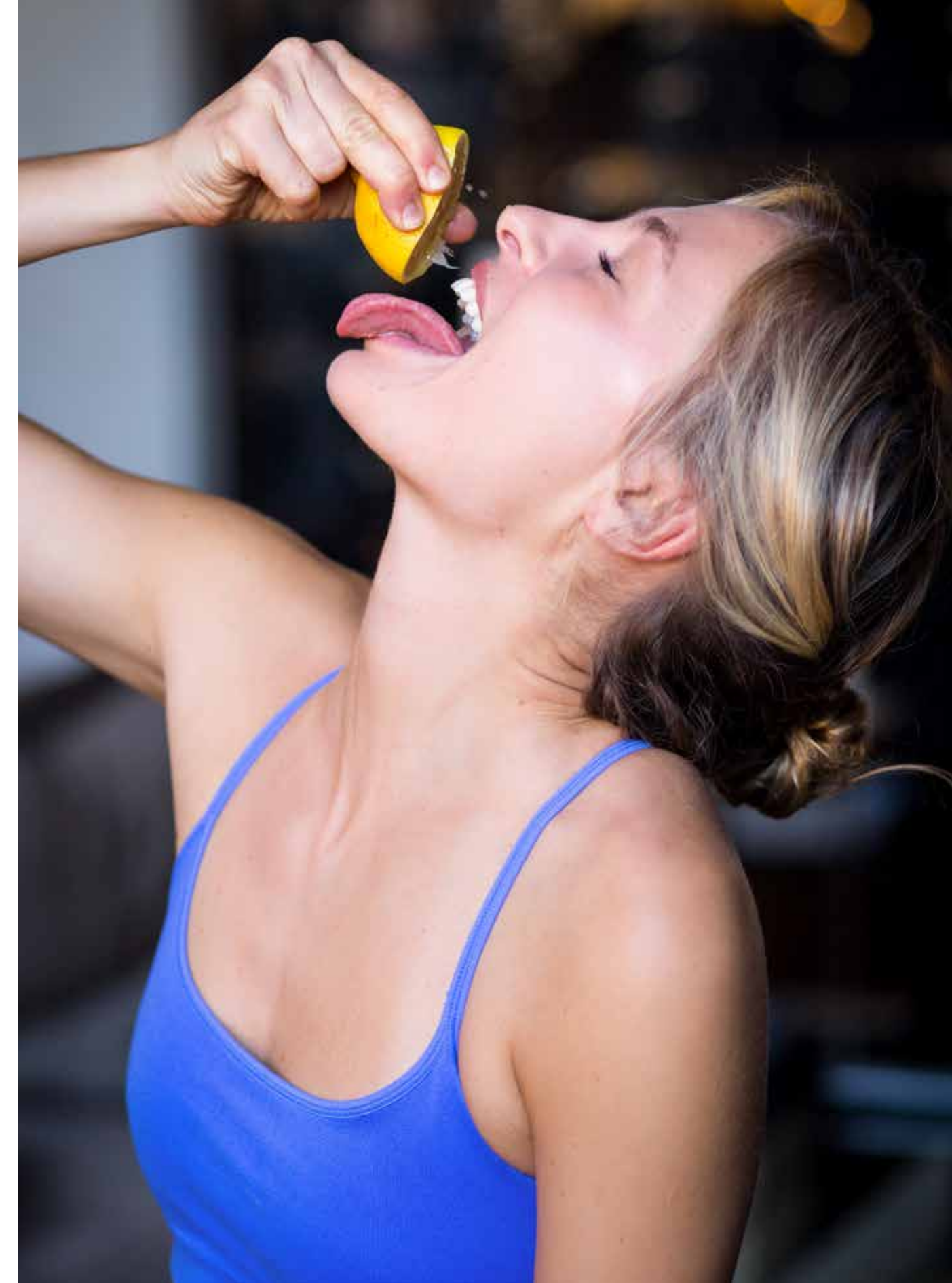
LIVE LIFE



Refresh yourself in a splash pool amongst the gardens residences, finish the day with a gentle dip in your private penthouse terrace pool or share a soothing Jacuzzi on the terrace. Celebrate life among love ones over a meal while enjoying spectacular views of the jungle and Ocean. Memories for a lifetime – a step away from your terrace.

FOR THE PALATE AND CONVERSATION

Modern Italian kitchen designs inspired by Biefbi.





BODY & WATER

Oversized integrated rain showers, well appointed mirrors and finishes procured by Total Kohler Home.

KOHLER.

B
BUROTTA



BUROTTTO

...CREATING HAPPINESS



MARINA
MARBELLA

MITTE
VITACURA

MARINASUR
PUCÓN

PUERTO VARAS
GRANPENINSULA
Lake

TROCADERO
PUEBLO BLANCO

SÔTE
MIAMI

CASAMAR
LAS TACAS • VIDA BAJO EL SOL



THE CONTINUED STEADY GROWTH OF BUROTTTO IS FOUNDED ON A DETAILED UNDERSTANDING OF ITS CLIENTS, AND ON EXCEPTIONAL EMPLOYEES. WITH OVER 26 YEARS OF INDUSTRY LEADING EXPERIENCE, BUROTTTO SPECIALIZES PRIMARILY IN HOTEL AND RESIDENTIAL REAL ESTATE DEVELOPMENT AND SALES.

C.A.L.A
MARBELLA

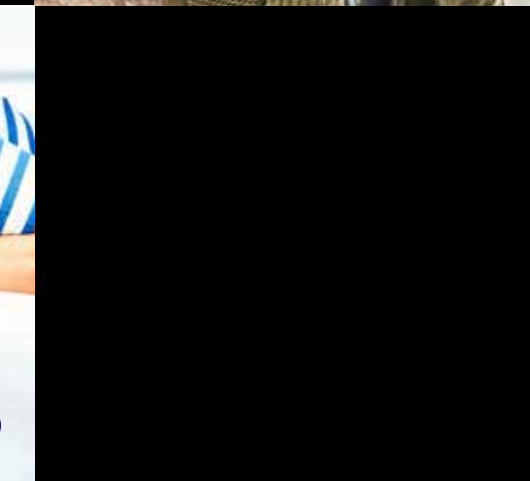
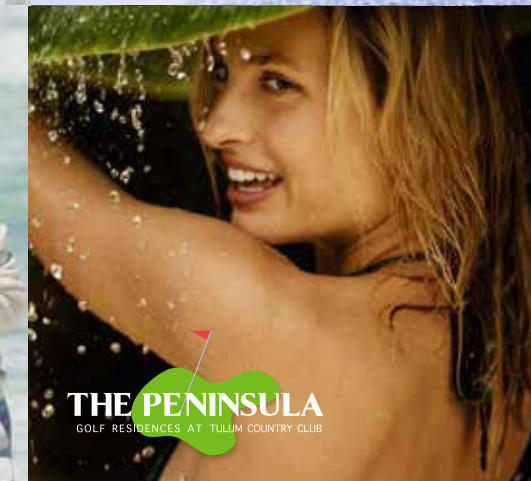
BANUS
MARBELLA

PENÍNSULA
VISTA
PUERTO VARAS

Lagunamar
LAS CRUCES

EL LODGE
PATAGONIA VIRGIN

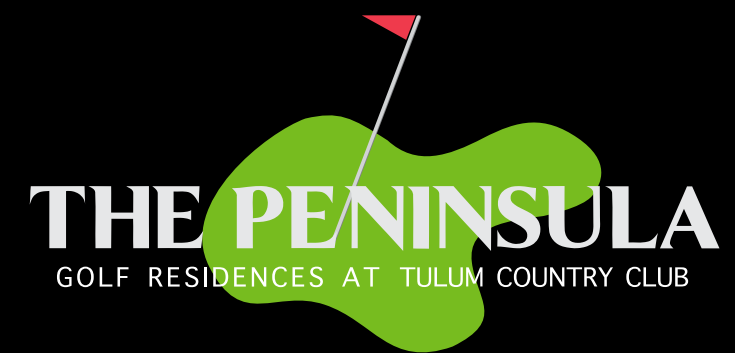
THE PENINSULA
GOLF RESIDENCES AT TULUM COUNTRY CLUB



BUROTTTO.COM



FLOOR PLANS



GARDEN RESIDENCES



LEVEL 2 & 3 RESIDENCES



PENTHOUSE LOWER LEVEL



PENTHOUSE UPPER LEVEL - AMENITIES

Las imágenes y planos contenidos en esta ilustración fueron elaboradas con fines ilustrativos, no constituyendo necesariamente una representación exacta de la realidad, su único objetivo es mostrar las características generales del proyecto. Al momento de efectuar su compra verifique la disponibilidad, precio, características y las especificaciones definitivas que tendrá el proyecto. Estas podrían experimentar modificaciones. Lo anterior se informa en virtud de lo señalado en ley N°19472.



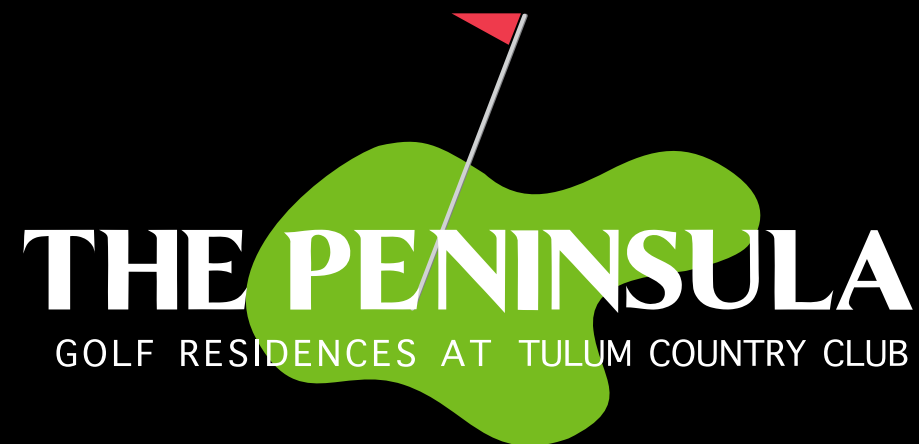
Contact

Tel. +52 (999) 931-2502

Cel. +52 (999) 324-7412

direccion@masterbrokermexico.com

www.masterbrokermexico.com



The Peninsula Golf Residences at Bahía Principe.
Tulum, México.

www.thepeninsulatulum.com

GUERRERO &
JUNEMANN
arquitectos asociados

Comercialized by
MBM
MASTER BROKER MEXICO

B
BUROTTTO