

# BANANA PLANT



**Ensete maurelii**  
**Red Abyssinian Banana**

H: 36-96" 90-240cm

Large paddle-shaped leaves, which are green with dark red undersides.



**Ensete ventricosum**  
**Abyssinian Banana**



H: 36-96" 90-240cm

Mature leaves are solid green, forming a bold specimen.



**Musa acuminata Cavendish**

H: 36-72" 90-180cm

Leaves have some maroon markings, but mature leaves are solid green, forming a bold specimen.



**Musa basjoo**

H: 72-168" 180-427cm

Produces huge paddle-shaped leaves that are 2' wide and can be 6' long.



**Musa zebrina**

H: 36-72" 90-180cm

Large, fleshy, rubberlike leaves with dark markings. The foliage is green with random reddish purple blotches.



# CALADIUM

H: 12-18 30-45cm



Tropical plant grown from a bulb, well known for its colourful foliage. Makes a beautiful house plant and is great in summer planters.



**'ALLURE'**



**'MOONLIGHT'**



**'PARTY PUNCH'**



**'PINK BEAUTY'**



**'PINK SPLASH'**



**'POSTMAN JOYNER'**

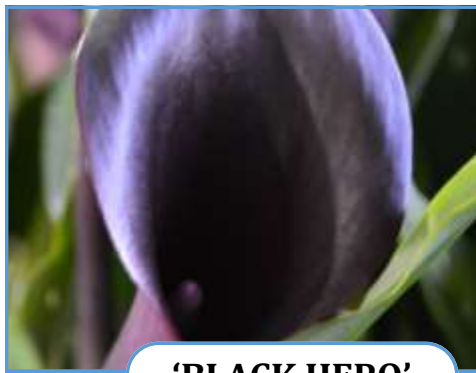


**'WHITE QUEEN'**

# CALLA

H: 12-18 30-45cm ☀

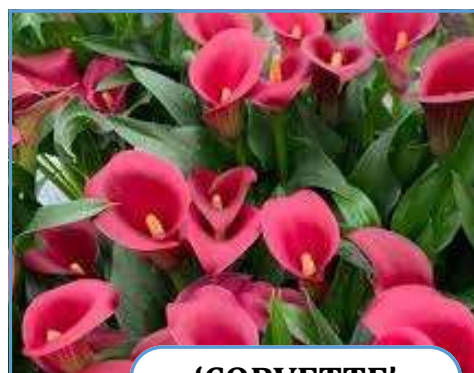
Callas possess a simple, but elegant flower. Each blossom is a soft, fluid twist perched atop a strong, straight stem. Makes a beautiful houseplant or great in a summer planter



**'BLACK HERO'**



**'CANCUN'**



**'CORVETTE'**



**'DUTCH GOLD'**



**'DUTCH ORANGE'**



**'EMANII'**




**'HALIFAX'**



**'WHITE FLIRT'**



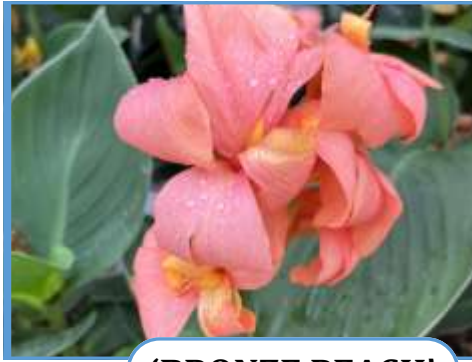
# Canna Connova

H: 30-48" 75-120cm 

Clean foliage offers a striking contrast with the flower. Is great for mixed combinations in planters or in-ground planting. Grown from seed.



**'BRONZE ORANGE'**



**'BRONZE PEACH'**



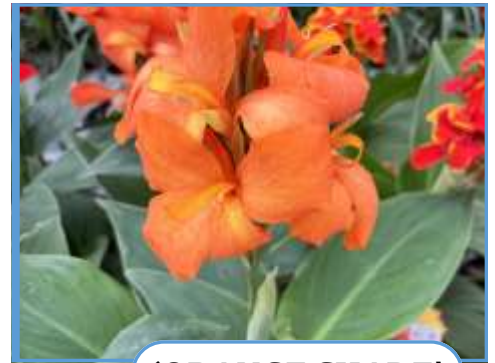
**'BRONZE SCARLET'**



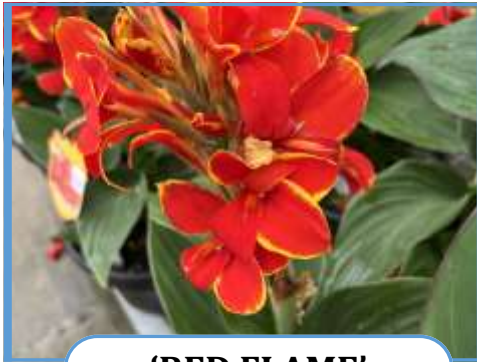
**'LEMON'**



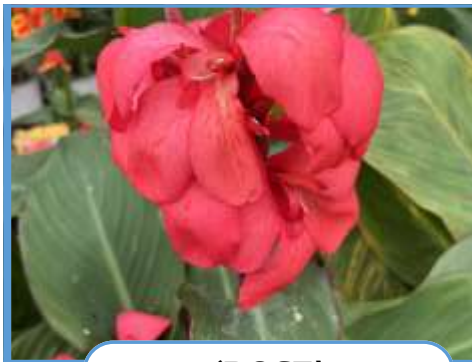
**'MANGO'**



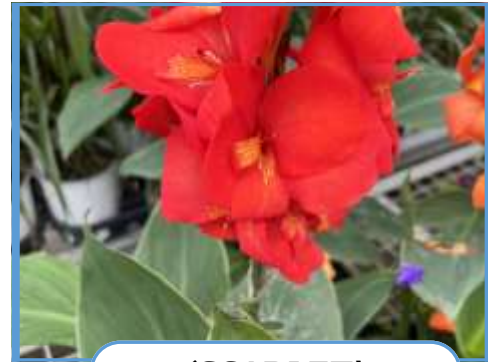
**'ORANGE SHADE'**



**'RED FLAME'**



**'ROSE'**



**'SCARLET'**



**'YELLOW'**

# COLOCASIA



**'Esculenta'**

H: 36-72" 90-180cm

Large heart-shaped, dark green leaves. Can be grown in the ground or water garden.



**'Esculenta Black Magic'**

H: 36-72" 90-180cm

Large deep purple foliage which can be grown in the ground or water garden.

# CORDYLINE



**'RED STAR'**

H: 36-48" 90-120cm

This versatile palm-like plant will give lots of colour and a tropical feeling to any landscape.



# GERBERA



## Jaguar Fire Series Assorted

H: 10-12" 25-30cm

Assorted colours of yellow, orange and red shades. Short, thick flower stems and compact leaves. Blooms are 3-4" in size. Premium Series



## Bengal Mix Series Assorted

H: 10-12" 25-30cm

Bigger, beefier flowers than the jaguar series. Strong, vigorous plants bloom profusely to add colour to any garden. Premium Series

# HIBISCUS

Give your garden a tropical flare with a hibiscus.  
Assorted varieties



H: 24-60" 60-150cm

# LATHYRUS ODORATUS ☀



## **Sweet Pea**

H: 8-96" 20-240cm

A bushy or climbing annual noted for its delicious scent of flowers.

# LOPHOSPERMUM ☀



## **Lofos 'Wine Red'**

H: 8-12" 20-30cm

A vigorous and trailing vine that has trumpet shaped blooms that are self cleaning.



# MANDEVILLA (DIPLADENIA)

## Mandinia

H: 48-72" 120-180cm



Dipladenia are very much like Mandevilla but have a different growing habit. They are a bushier plant but still climb vigorously. They have smaller flowers and finer leaves.



**'DARK RED'**



**'HOT PINK'**



**'MADINIA CORAL PINK'**



**'MADINIA DEEP RED'**



**'MADINIA LIGHT PINK'**



**'MADINIA MAXIMO PINK'**



**'MADINIA MAXIMO RED'**



**'MADINIA PINK'**



**'MADINIA WHITE'**



# MORNING GLORY



H: 60-120" 152-304cm

Morning Glory is a twining vine with showy trumpet-shaped flowers. Assorted varieties.



# PENNISETUM



Beautiful foliage that adds colour and texture to any garden or patio pot.



**'PURPLE FOUNTAIN'**

H: 36" 90cm



**'FIREWORKS'**

H: 36" 90cm



**'SKYROCKET'**

H: 24-36" 60-90cm

# SUCCULENTS ☀



**ASSORTMENT**

Plants have thick, fleshy leaves, which are drought tolerant. There are many uniquely shaped varieties in various colours.

# THUNBERGIA ☀



**ASSORTMENT**

H: 72-96" 180-240cm

Fast growing vine that needs a vertical stand or trellis to support the plant.