



ATL Agricultural Technology Ltd

Units 1 & 2, Acorn Business Centre,
Oaks Drive, Newmarket, Suffolk, CB8
7SY, United Kingdom

T: 0044 (0)1638 731212

F: 0044 (0)1638 731174

E: info@atlagri.com

W: www.atlagri.com

Innovation in and out of parlour



Cloud
Connected



Micro M5 Parlour Control



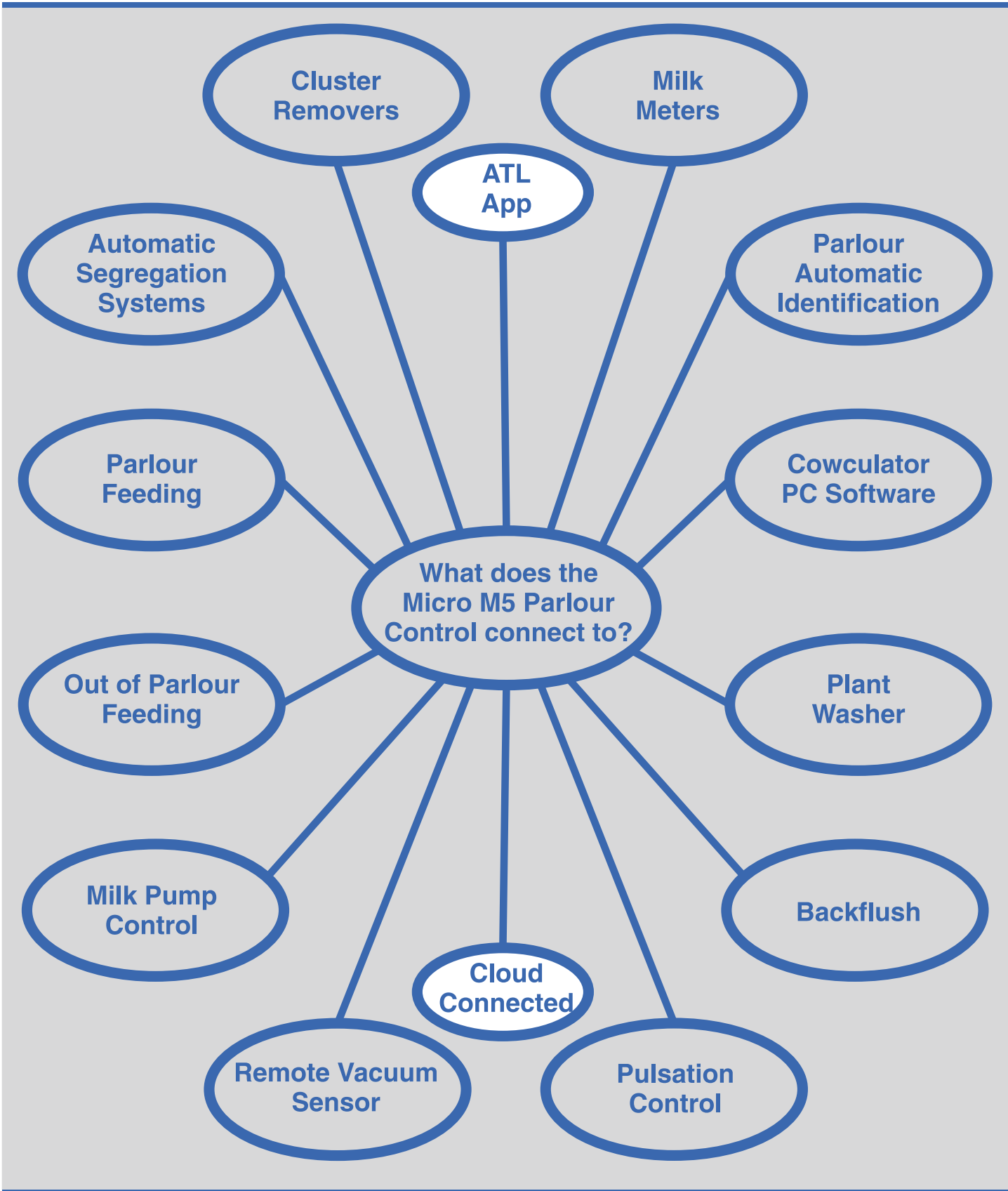
Meet the new standard in parlour controls...

The Micro M5 is a simple and easy to use memory parlour or feeder control. It uses embedded technology to provide all the functionality and data storage required to run automation systems on herringbone, parallel and rotary milking parlours for cows, goats and sheep.

It connects a wide range of systems including cluster removers, milk meters, parlour automatic identification, automatic drafting gates, backflush, automatic plant washers and dairy animal management software.



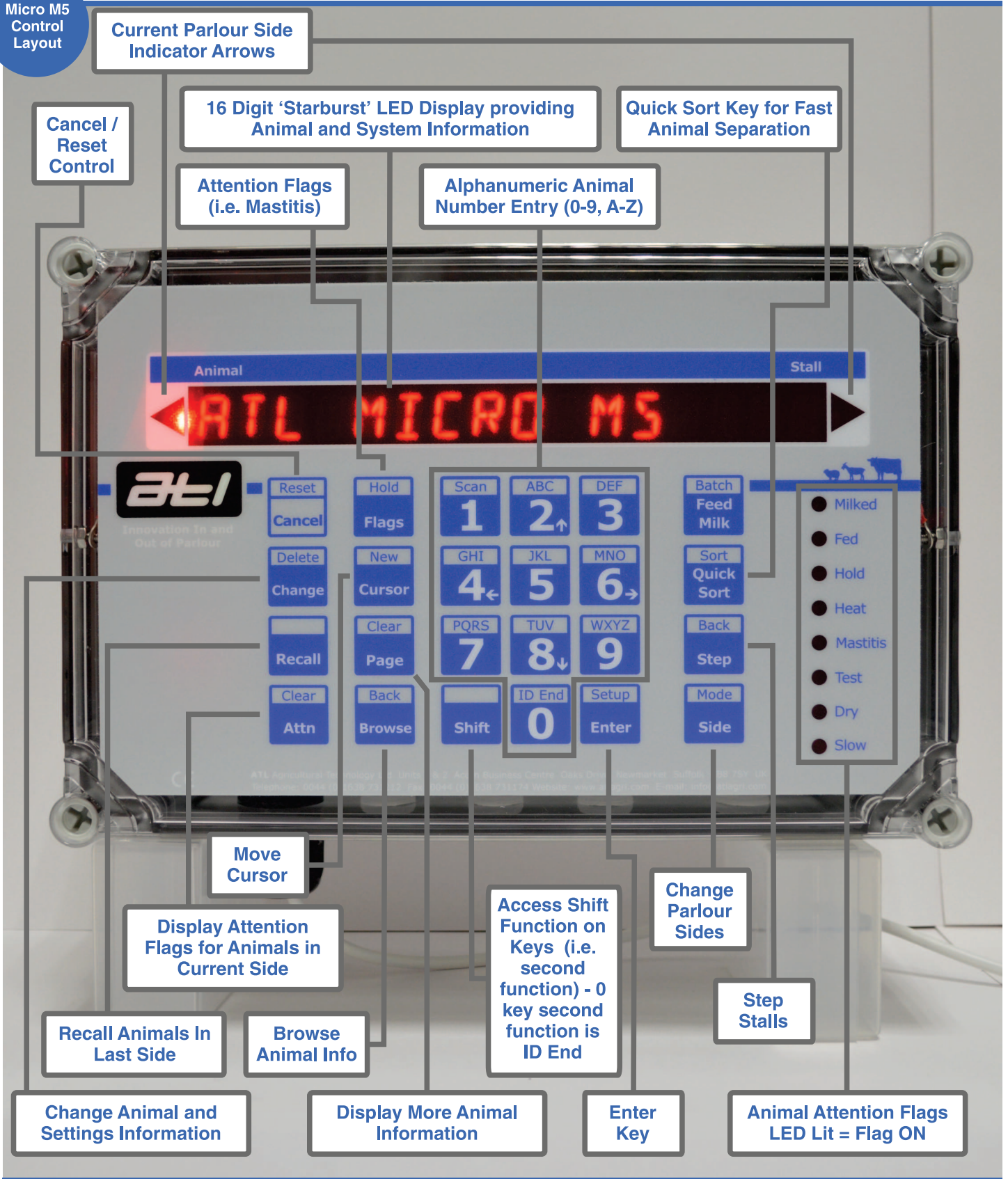
Innovation in and out of parlour





Innovation in and out of parlour

Micro M5
Control
Layout





Innovation in and out of parlour

Cluster Removers



What Cluster Removers does the Micro M5 connect to?

The Micro M5 links to the CR35 cluster remover control via the M2 communications bus.

What information is available via the connection?

- All milking points can be put into wash (cluster lowered) and into milk (clusters raised) from any cluster remover control
- When the animal number is entered in the Micro or connected to a parlour automatic identification system, the Micro records the following information from each cluster remover control:
 - Milking start time
 - Milking length (minutes:seconds)
 - Highest conductivity value
- The operator can also see attention / warning flags prior to the milking unit being attached to the animal and can set flags during the milking process.
- The operator can give the animal additional 'top up' feed.





Innovation in and out of parlour

Milk Meters



What Milk Meters does the Micro M5 connect to?

The Micro M5 links to the MM range of milk meter controls via the M2 communications bus.

What information is available via the connection?

- All milking points can be put into wash (cluster lowered) and into milk (clusters raised) from any cluster remover control
- When the animal number is entered in the Micro or connected to a parlour automatic identification system, the Micro records the following information from each milk meter control:
 - Milking start time
 - Milking length (minutes:seconds)
 - Milk yield
 - Highest conductivity value
 - Stall number animal milked in
- The operator can also see attention / warning flags prior to the milking unit being attached to the animal and can set flags during the milking process.





Innovation in and out of parlour

Milk Meters



What are some of the attentions that are available on the MM controls?

- Slow milker (has different ACR setting)
- Colostrum milk
- Antibiotic milk
- High conductivity
- Milk yield lower than expected

What information is available on the MM controls?

- Animal number
- Previous milk yield
- Previous conductivity

Additional Features

- The operator can give the animal additional 'top up' feed from the point and this is recorded against the animal for future reference.





Innovation in and out of parlour

Parlour
Automatic
Identification



What does the Micro M5 store when connected to a parlour automatic identification system?

- Allows identification via per stall or walkthrough antennas
- Provides warning of incomplete side of animals if connected to ATL gate controllers
- Records time automatic identification system is started on each side
- Records time each animal is identified
- Records time automatic identification system finishes identifying each side
- Records whether identification correct on walkthrough ID and if not, how many animals missed via number entered manually and which side they have been inserted on





Innovation in and out of parlour

Automatic Segregation



What does the Micro M5 link allow?

- Allows multiple segregation systems to be controlled
- Group based drafting (i.e. high yielders for buffer feeding or mastitis animals segregated before milking)
- Date-based drafting (i.e. Monday June 10th sort all animals for the veterinary visit)
- Micro allows more than 1 attention flag to be used for sorting animals
- Records time and date animals identified by the segregation system antenna



Innovation in and out of parlour

Parlour Feeding



How does the Micro M5 work with parlour and out of parlour feeding?

Parlour Feeding

- Controls up to 16 parlour feeders per side in the main box and then additional feeders using extension boxes
- Can operate electric (12vDC or 24vDC), vacuum or compressed air parlour feeders
- The Micro records the amount each animal is fed and the stall number the animal they were fed at

Out of Parlour Feeding

- Controls 20 plus out of parlour feeders
- The Micro records the amount each animal is fed, amount of uneaten feed, number of visits and visit length

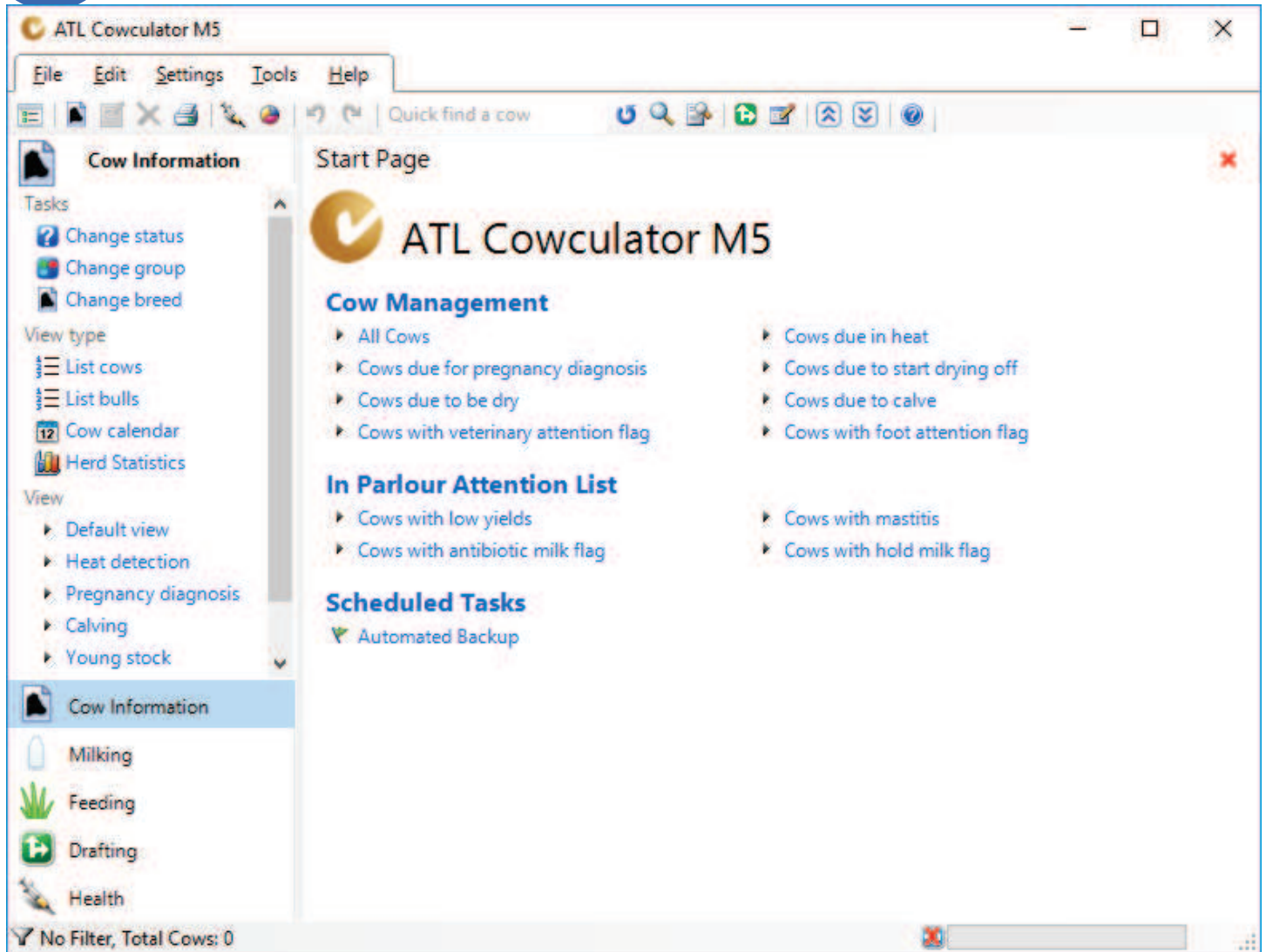
Out of Parlour Feeding





Innovation in and out of parlour

Cowculator
PC Software



What does the Micro M5 Cowculator link provide?

- Cowculator PC software allows the information stored within the Micro M5 to be displayed in an easier to understand format (i.e. tables, graphs)
- The software displays milk yields, milking times, conductivity values and various other information
- A live parlour view is included
- For more information please see the Cowculator leaflet

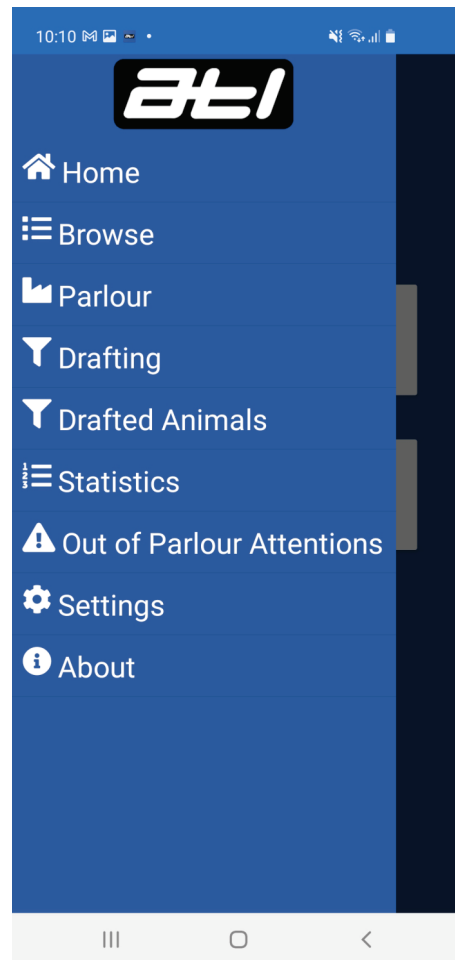
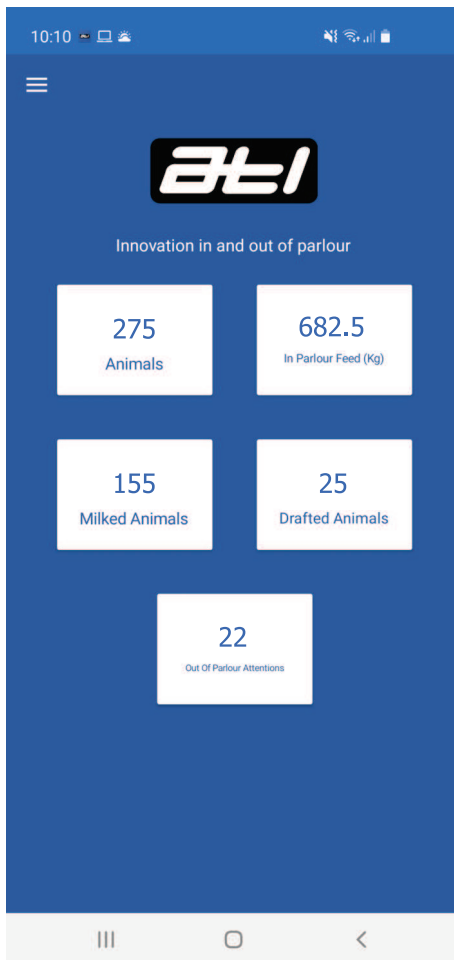
What does the Micro M5 Cloud Connection provide?

- The Micro M5 can be connected to ATL's secure servers via a standard broadband / fibre router
- This allows the data to be automatically backed up onto ATL's secure servers



Innovation in and out of parlour

ATL
App



What does the Micro M5 ATL App link provide?

- Allows access your herd information from anywhere
- Check yield and conductivity
- Turn on health attentions
- Link electronic ear tags
- Check out of parlour feeder attentions
- Draft attentions
- See herd milking statistics
- All from anywhere

- For more information please see the ATL App leaflet



Innovation in and out of parlour

Authorised Distributor | Dealer | Agent