



ATI MicroMarque3s

Firmware Upgrade Guide

Revision 1.1 – July 2014

Table of Contents

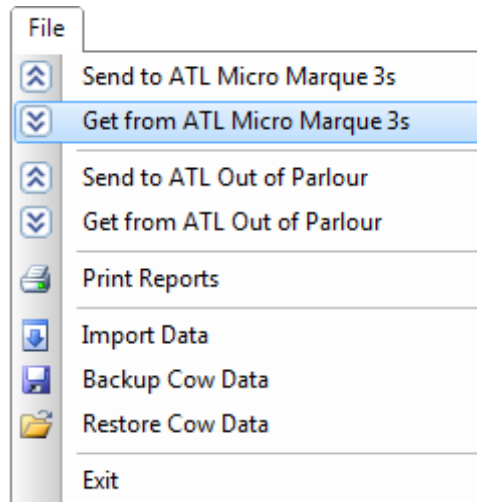
1 Firmware Update Guide Revisions.....	3
2 Downloading Animal Data and Settings.....	4
3 Updating the firmware.....	7

1 Firmware Update Guide Revisions

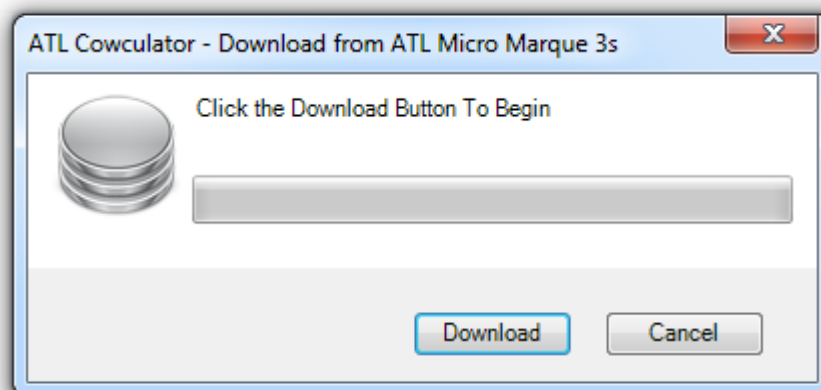
Revision	Release Date	Notes
1	March 2010	Initial release
1.1	July 2014	Updated to include uploading and downloading of settings from the ATL Micro Marque 3s control using ATL Cowculator 2010.

2 Downloading Animal Data and Settings

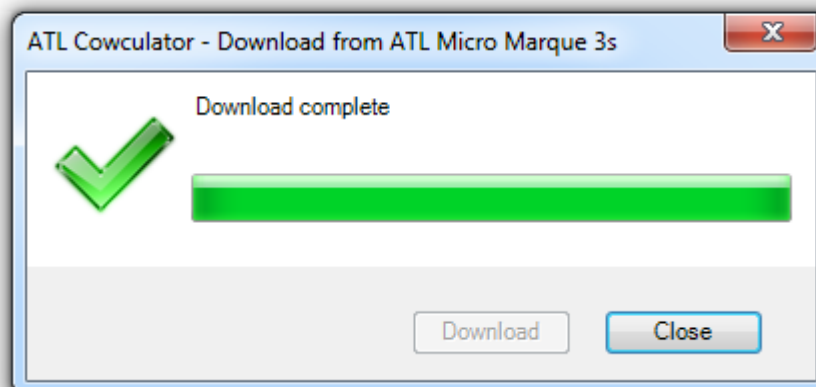
Before updating the firmware in the control, the animal data and settings must be saved.



To save the animal data, select the File menu, then click "Get from ATL Micro Marque 3s"

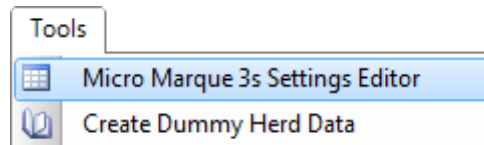


Click "Download" to begin downloading the animal data.

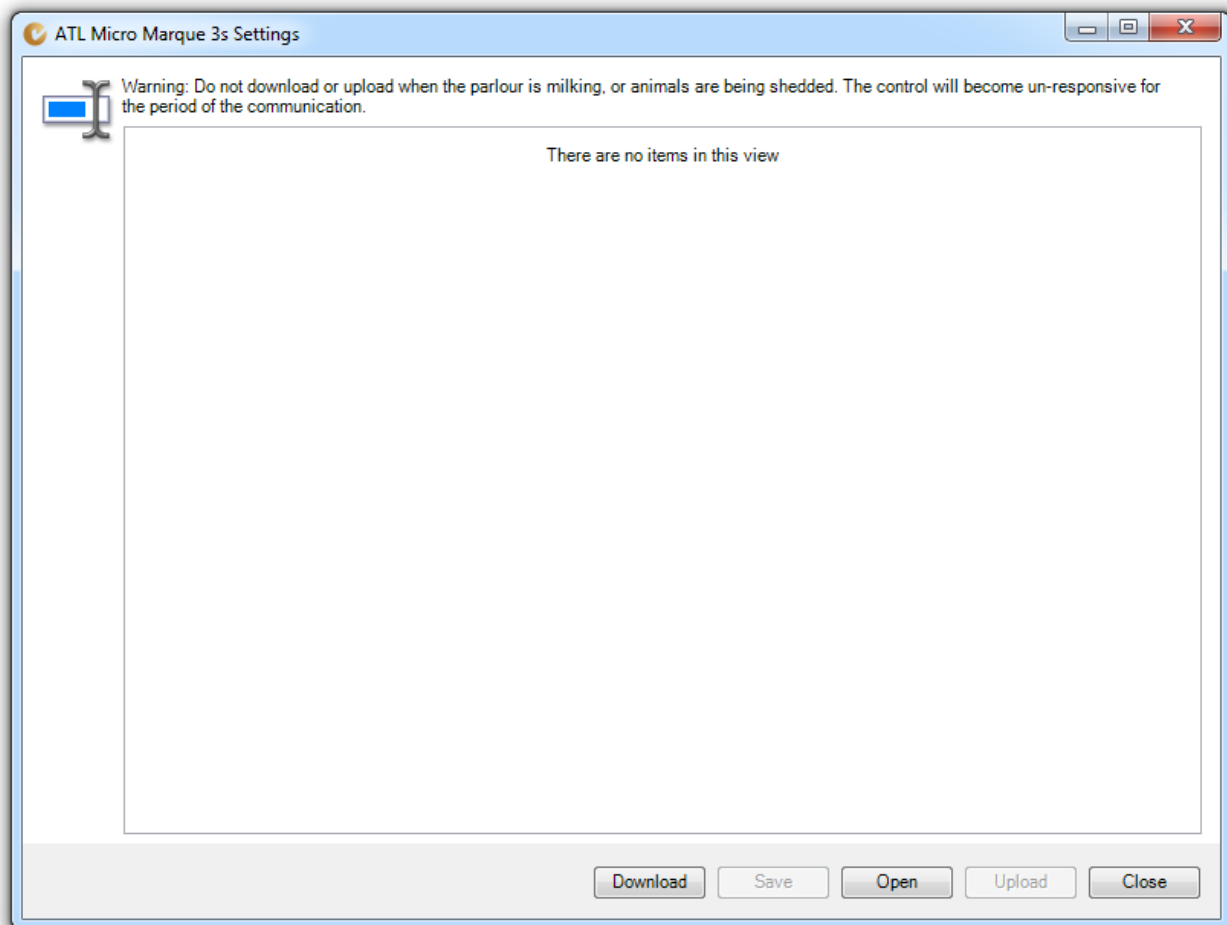


After the download has completed, click the "Close" button.

To download the settings, select the "ATL Micro Marque 3s Settings Editor" from the Tools menu, if the menu item is not available, please update the program via the internet.

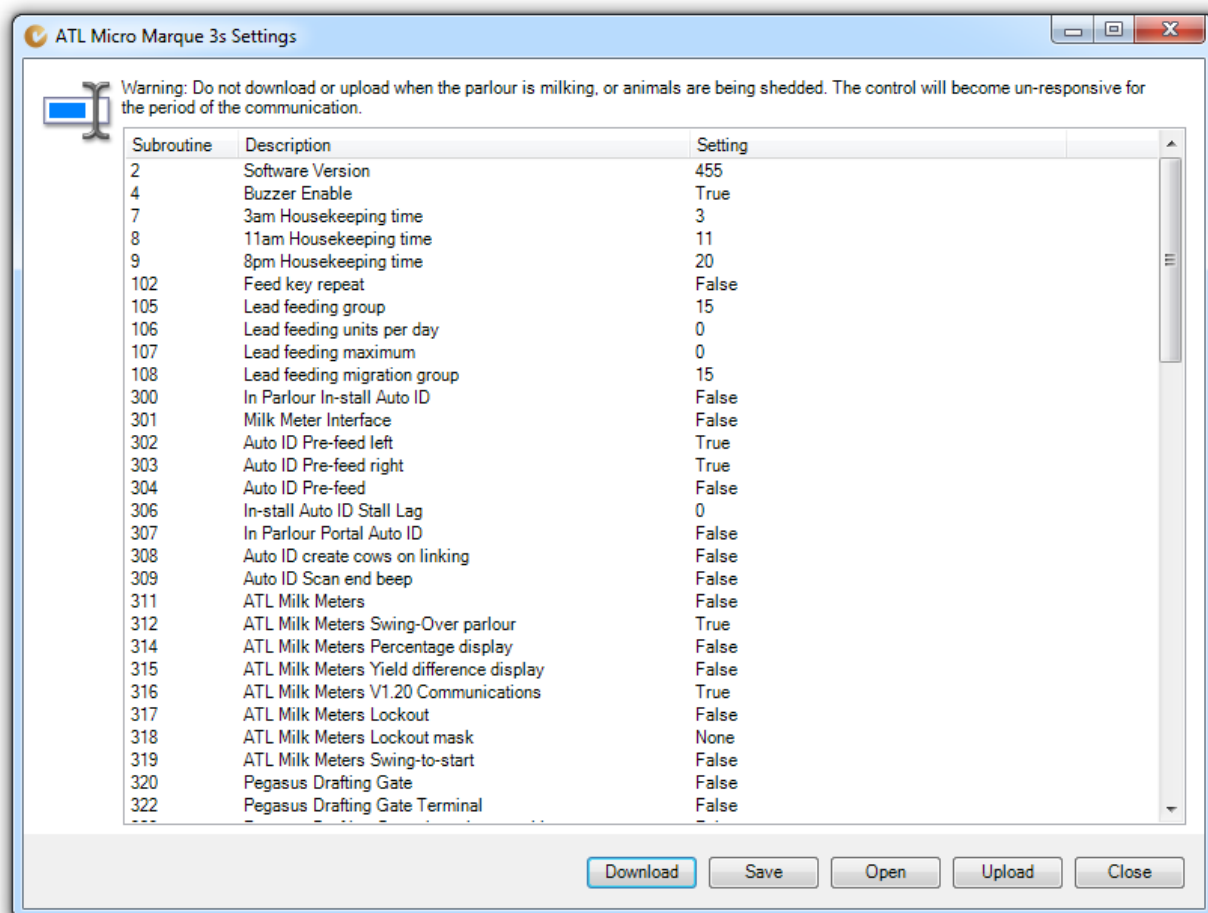


This will open the settings editor, as shown below;



Clicking "Download" will initiate the download of the settings; Please note that the parlour or shedding gate cannot be in use when the download or upload is running as the control will become unresponsive during the communications.

Once the download has completed, check the settings to make sure they are correct, and correct any errors;



Click the "Save" button and save the settings, so that they are available if required at a later date.

The control is now ready to have the firmware updated. Leave the settings window open on the computer while the firmware is updated.

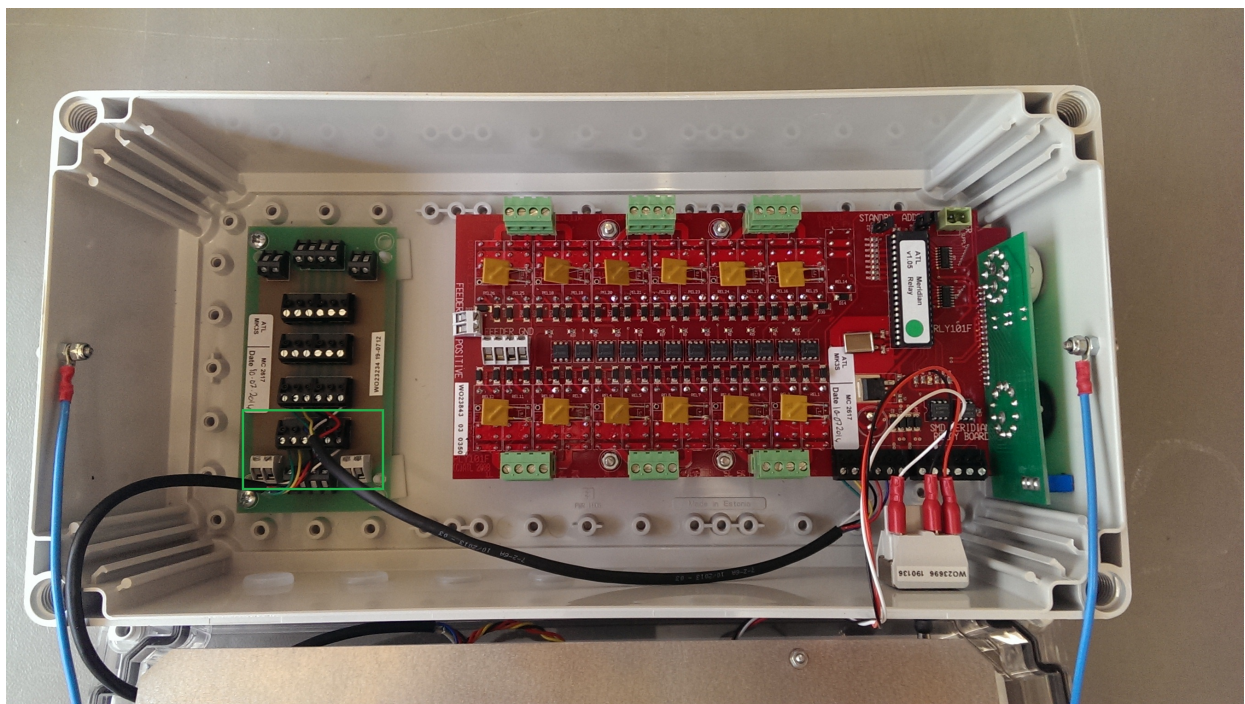
3 Updating the firmware

The control must be switched off before updating the firmware.

1. Open the ATL Micro Marque 3s control by unscrewing the lid.



2. Unplug the power connection for the lid.

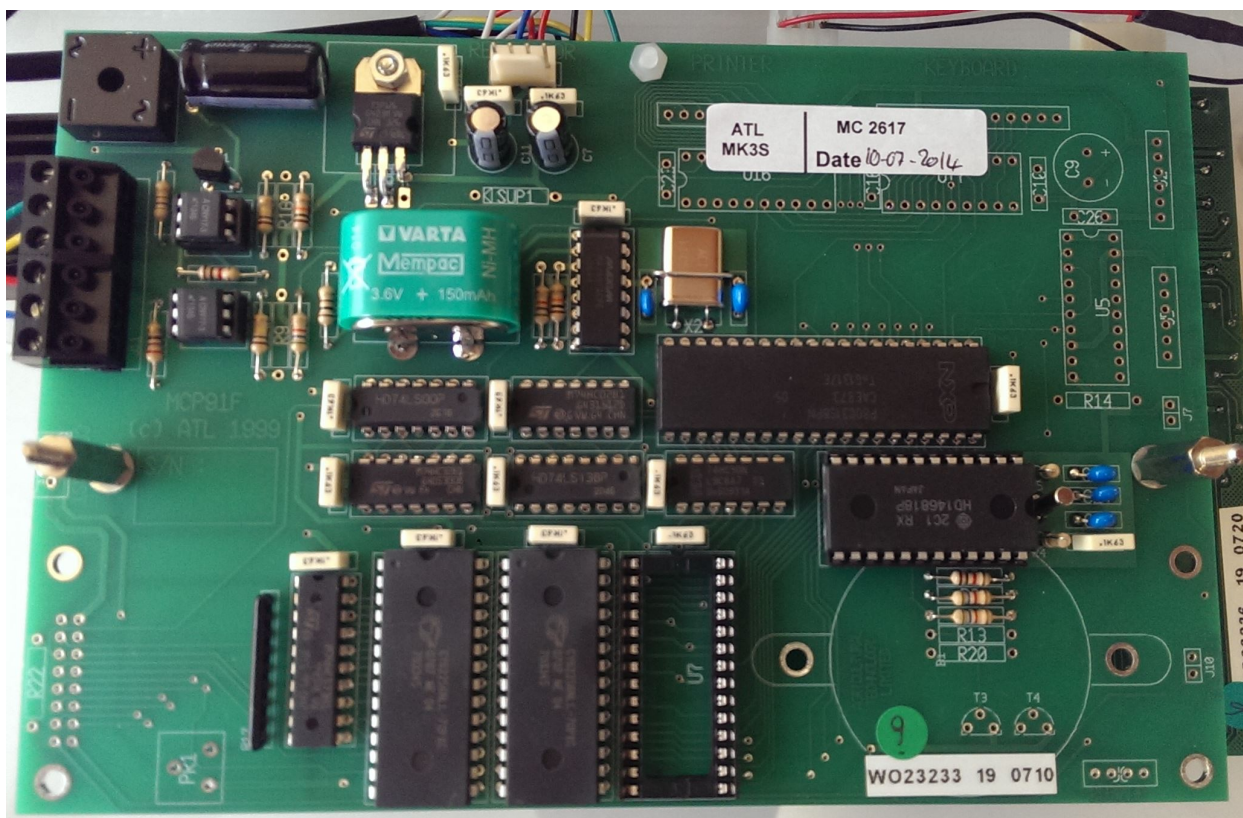
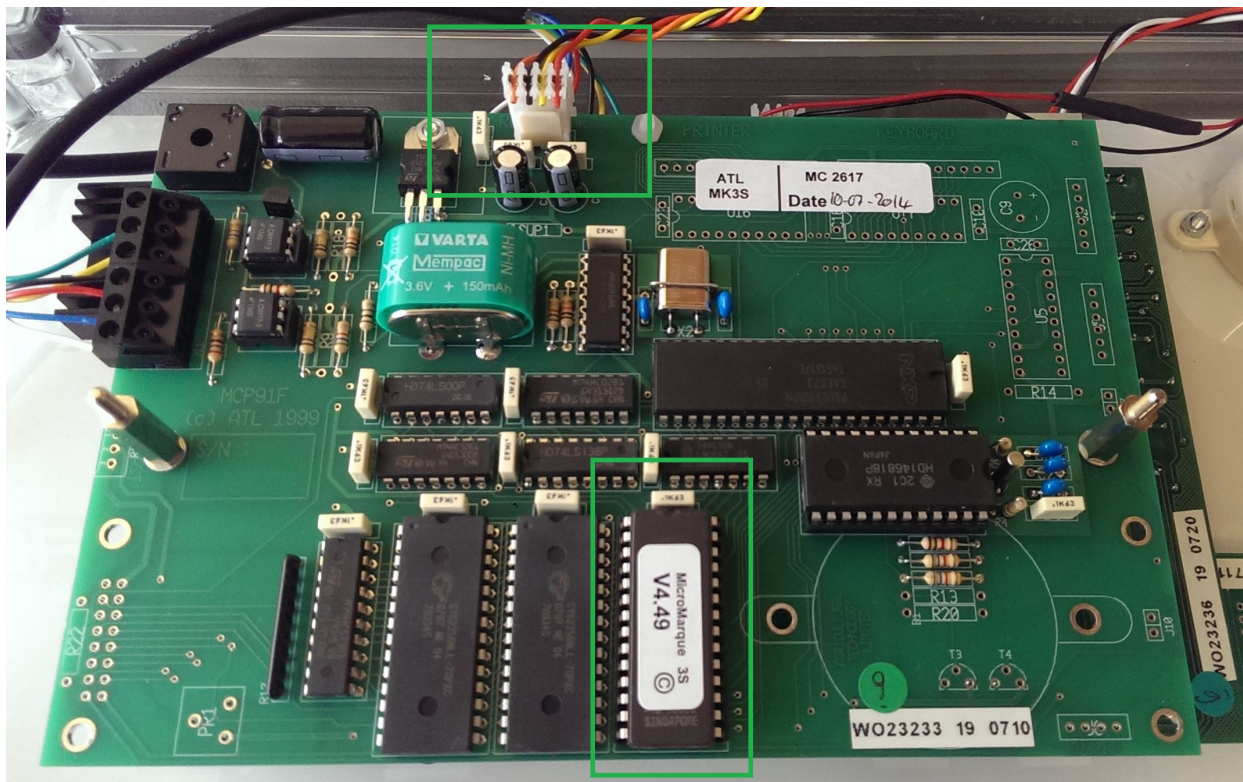


3. Using a 5.5mm nut runner, remove the heater panel nuts.

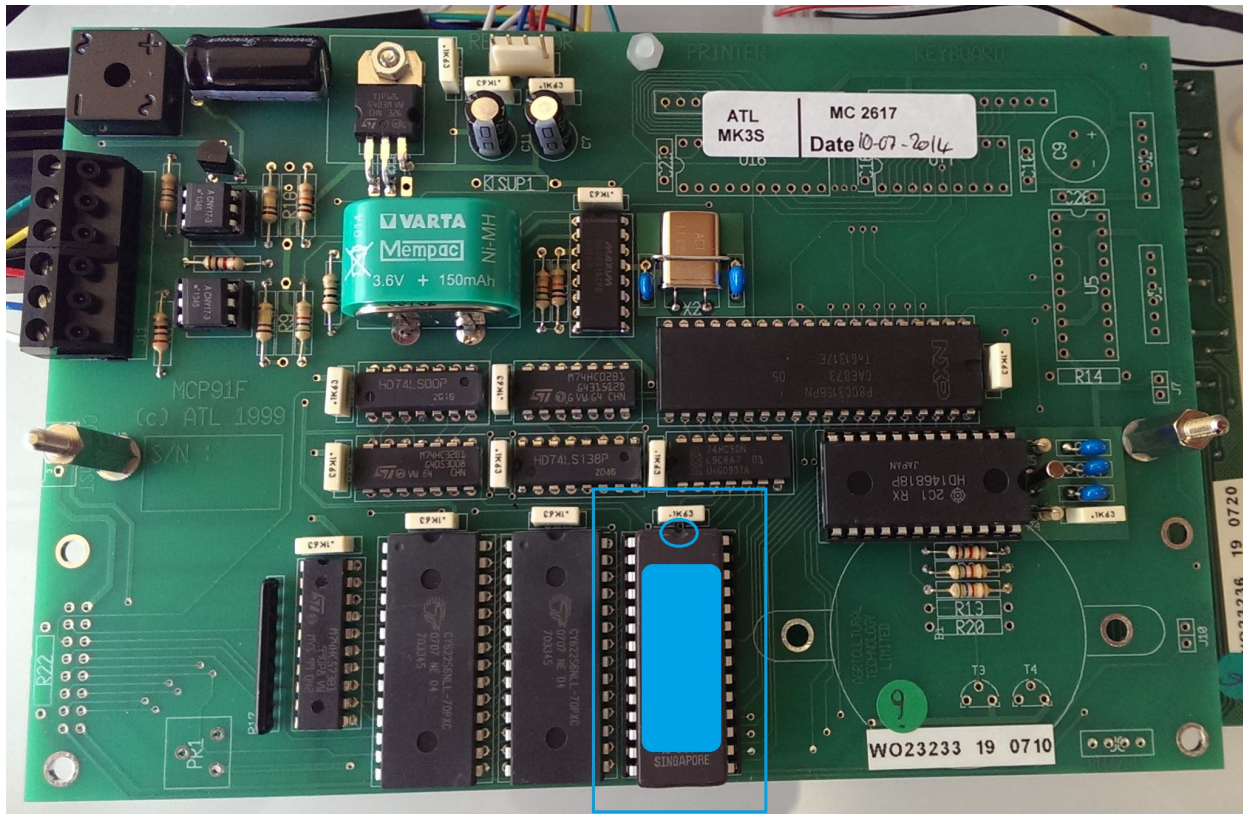


4. Remove heat sink connection and place down in a safe place.

- Using a terminal screwdriver, remove the old EPROM chip ready for the new chip.



6. Insert new chip into empty socket, ensuring the notch in the chip is to the top.



7. Reconnect the heat sink panel, and attach with the 2 M3 nuts.
8. Plug in the meridian bus 6 way power and data plug into the base of the box.
9. Re-power the system, checking the meridian light is flashing in the cow window;



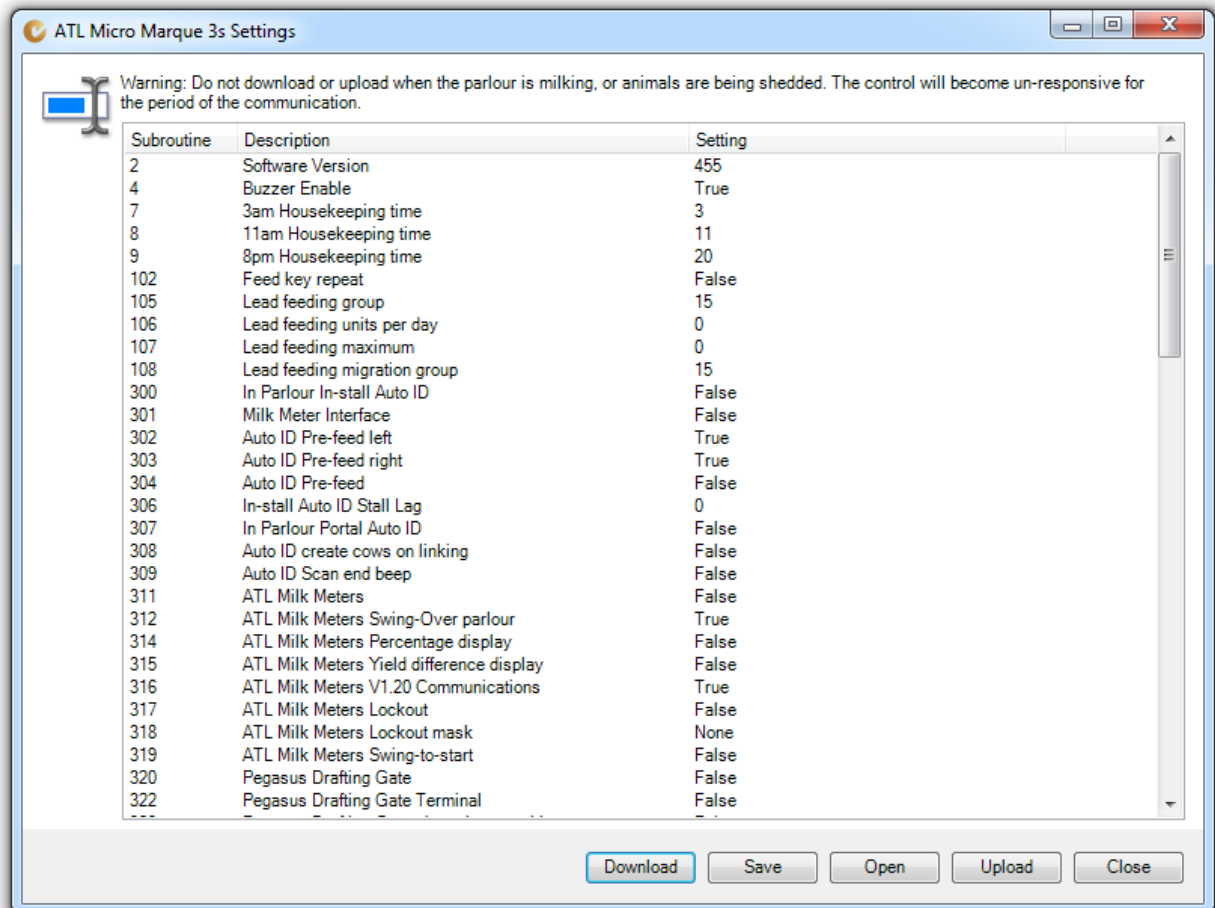
10. Check the program light is on, if not run subroutine 638 (Press Shift and Enter at the same time, then type 6, 3 then 8, then press enter).



11. Run subroutine 888 to clear the memory and initialise the control (Press Shift and Enter at the same time, then type 8, 8 then 8, then press enter).
12. The control is now ready to have the animal data and settings put back into it.

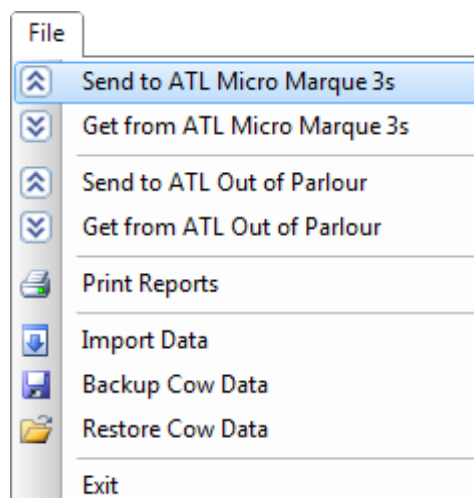
Uploading the settings and animal data

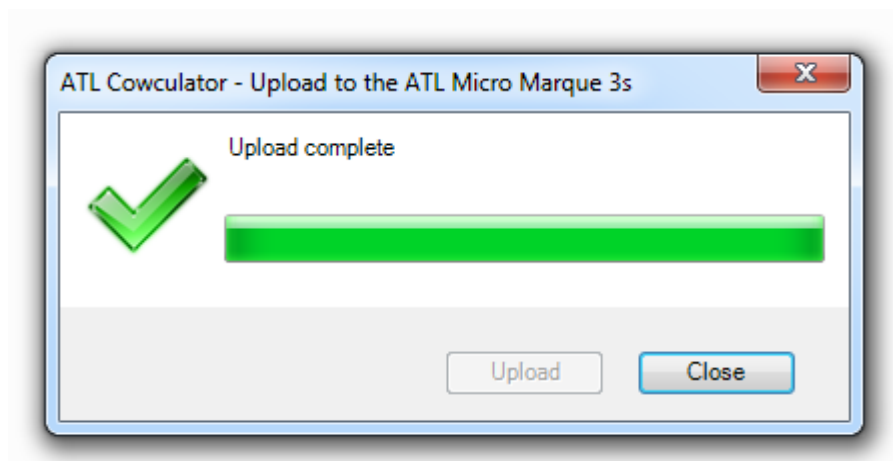
Returning to the ATL Micro Marque 3s Settings Editor window, click the "Upload" button to sent the settings back to the control.



Once the upload is complete, close the settings window.

Then select the "Send to ATL Micro Marque 3s" from the file menu;





Click the close button to exit the upload window.

Check the control to make sure it is functioning correctly. The firmware update is now complete.