

## SECURITY WARNINGS

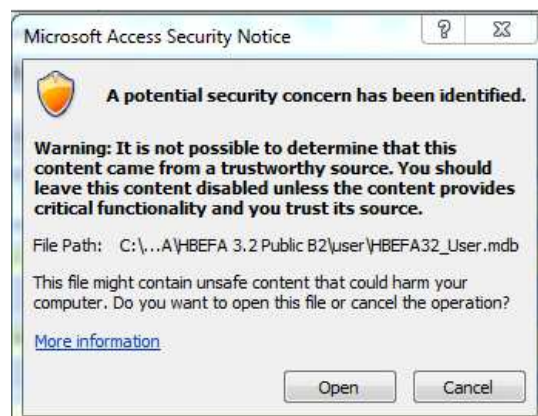
02 JULY 2014 | HBEFA\_HOWTODISABLESECURITYWARNINGS.DOCX

1 | 2

FROM INFRAS

## HOW TO DISABLE SECURITY WARNINGS

HBEFA is based on MS Access Software (Access 2010). The standard installation produces regularly security warnings as shown below:



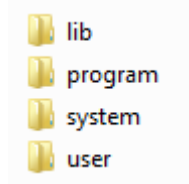
This may be tedious if you are using HBEFA intensively. There are different ways to disable these security warnings. This document explains two ways, one with resp. without full MS ACCESS versions installed:

### A. IF MS ACCESS IS AVAILABLE ON YOUR PC

#### Open MS Access Full version with any database

1. On the **File** tab, click **Options**.
2. In the **Access Options** dialog box, on the left, click **Trust Center**.
3. On the right, under **Microsoft Office Access Trust Center**, click **Trust Center Settings**.
4. In the left pane of the **Trust Center** dialog box, click **Trusted Locations**.
5. To add a network location, in the right pane, select the **Allow Trusted Locations on my network** check box.
6. Click **Add new location**.

7. In the **Microsoft Office Trusted Location** dialog box, use one of the following methods:
  - › In the **Path** box, type the full path of the location that you want to add.
  - › Click **Browse** to browse to the location.
  - › Look for the folder where HBEFA is installed, e.g.  
C:\Program Files (x86)\HBEFA\HBEFA 3.2. The relevant folder will have four subfolders



8. Select the **Subfolders of this location are also trusted** check box.
9. Optionally, in the **Description** box, type a description for the trusted location.

## B. IF MS ACCESS IS NOT AVAILABLE

If MS Access is not installed, the following procedure does basically the same (it tells the program whether the location, where HBEFA is installed, is a trusted location).

1. Install HBEFA in a location, where you have full access permission.
2. Then you can add this location to the list of trusted locations with a tool (AppPath). You can download this tool from [www.hbefa.net/download/AddPath2010V1.4.zip](http://www.hbefa.net/download/AddPath2010V1.4.zip) – or you can download alternative versions from [http://www.accessribbon.de/en/?Trust\\_Center:Trusted\\_Locations](http://www.accessribbon.de/en/?Trust_Center:Trusted_Locations)
3. Unzip the file in the folder where HBEFA is installed and run the \*.exe file. This adds the name of the folder and its subfolders to the list of trusted locations.