



KY 1911

KY Strategy 2022–2025

# The values for KY

## Community

Community is at the heart of all things at KY. We come together to build and celebrate the *kylteri* culture and history. Larger than any individual, KY welcomes everyone to join.

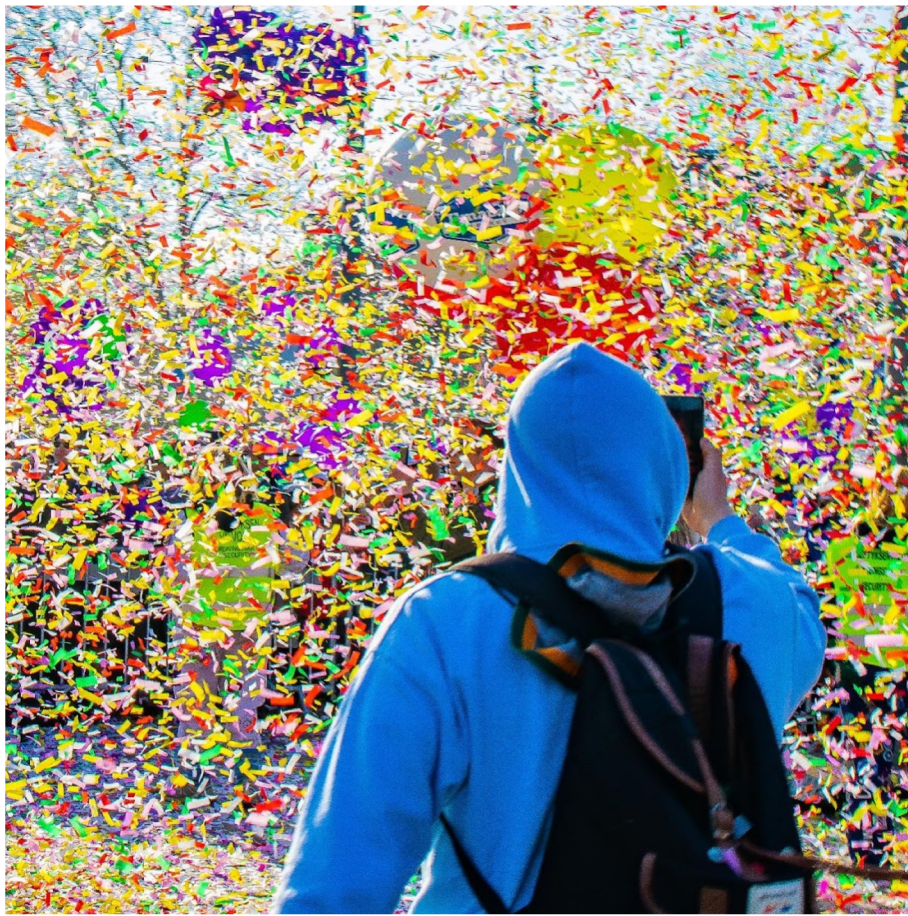
## Open-minded

Whether it is an idea, association, partner or individual, we meet each other from a place of empathy. We are ready for new perspectives, ideas and initiatives. Our communication is direct and transparent, always ready for dialogue.

## Member-driven

Our organizational culture supports change and new ideas. We make sure that everything we do is to the benefit of our members. Structures and testaments are a tool, not the rule.





# Mission statement:

KY exists only **for**  
and **because of**  
our members.

# Vision statement for KY:

- Our actions are measured by the wellbeing and success of all our members.
- When KY can be at the heart of every *kylteri*, we live up to our values and purpose.

The **most**  
**meaningful**  
community for  
every ***kylteri***.

# KY Ways of working

To make sure that our values, vision and mission are there in our actions, we've listed three most important ways of working to trickle through the KY community.

## Sustainable in all forms

We are ecologically, socially and economically sustainable.

We support mental health in studies, volunteering & work.

We collaborate with organizations that support sustainability.

We build a culture of thanking.

## DEI\* shows in our actions

We build our knowledge on minorities in all operations.

Our communications, premises and events are accessible & approachable.

Our Code of Conduct is applied and updated consistently.

## There for every kylteri

We ask for feedback systematically.

We encourage open events and inclusive co-operation.

We offer more approachable volunteer positions.

\*Diversity, equity and inclusion