



# KUBOTA OC SERIES

1 cylinder air/oil cooled diesel engine

## OC60



KUBOTA

## THE IDEAL SMALL ENGINE

Lightweight. compact, durable the ideal small engine package



Horsepower	6.2
Cylinders	1
Bore	72mm
Stroke	68mm
Displacement	276cc
Fuel capacity	3.6 lt
Weight	38 kg

Shaft options available

Continuous HP Rating:

2200 rpm	2400 rpm	2600rpm	2800 rpm	3000rpm	3200rpm	3400rpm	3600rpm
4.0	4.2	4.5	4.7	5.0	5.2	5.5	5.6

## GENERAL SPECIFICATION

Net Intermittent SAE-J1349

<b>Model</b>		<b>OC60-E3</b>
<b>Emission Regulation</b>		Tier 4
<b>Type</b>		4-cycle Oil-air cooled Diesel
<b>Number of Cylinders</b>		1
<b>Bore</b>	mm (in)	72 (2.83)
<b>Stroke</b>	mm (in)	68 (2.68)
<b>Displacement</b>	L (cu.in)	0.276 (16.84)
<b>Combustion System</b>		IDI (TVCS)
<b>Aspiration</b>		Naturally Aspirated
<b>Maximum Speed</b>	rpm	3600
<b>Output: Net Intermittent</b>	kW	4.5
	HP	6.0
	PS	6.1
<b>Oil Pan Capacity</b>	L (gal)	1.3 (0.34)
<b>Starter Capacity</b>	V-kW	12-0.7
<b>Alternator Capacity</b>	V-A	12-4.0
<b>Length</b>	mm (in)	461 (18.15)
<b>Width</b>	mm (in)	403 (15.87)
<b>Height (1)</b>	mm (in)	458 (18.03)
<b>Dry Weight</b>	kg (lb)	38 (84)

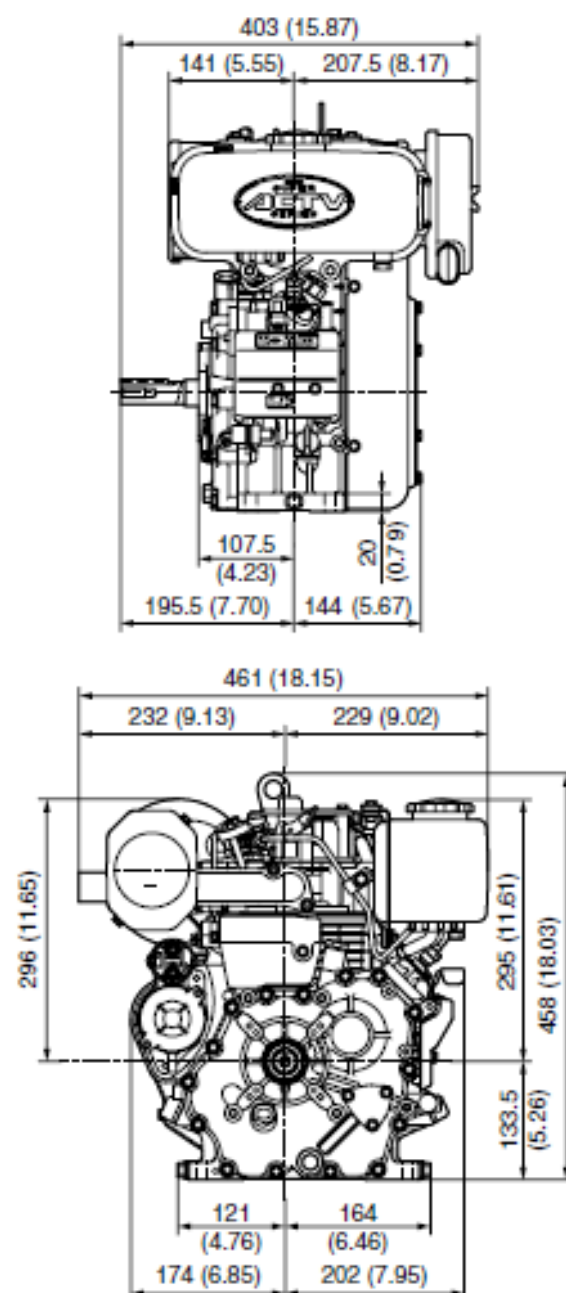
\*Specification is subject to change without notice.

\*Output: Net Intermittent SAE-J1349

\*Dry weight is according to Kubota's standard specification.

When specification varies, the weight will vary accordingly.

## DIMENSIONS



Your Driving Force  
KUBOTA ENGINE

### KUBOTA Corporation

2-47, Shikitsuhigashi 1-chome, Naniwa-ku, Osaka, 556-8601 Japan

Fax: 06-6648-3521

<http://engine.kubota.co.jp>

1331-01-COM 108.03.STD