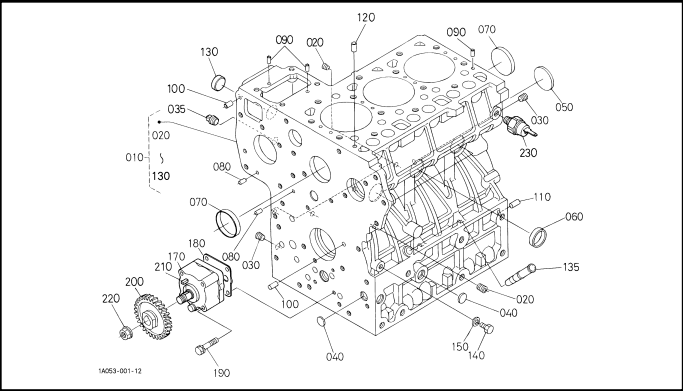
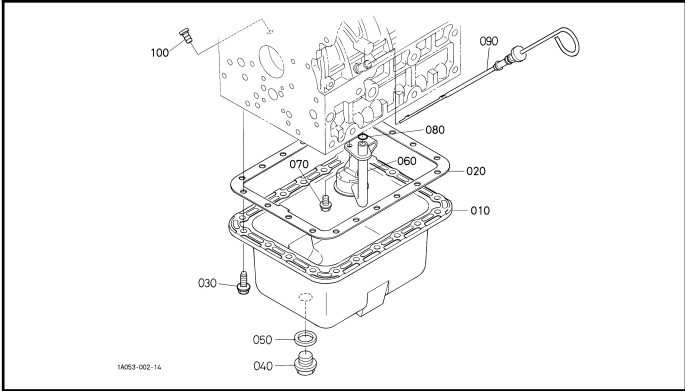


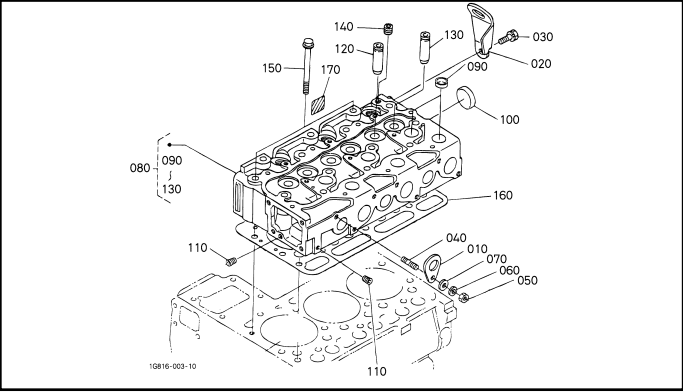
000100 CRANK CASE



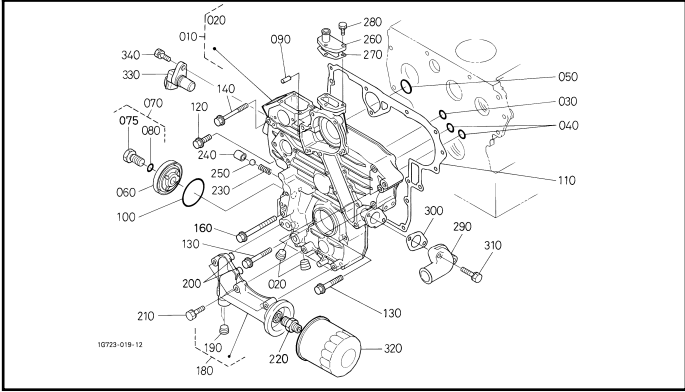
000200 OIL PAN



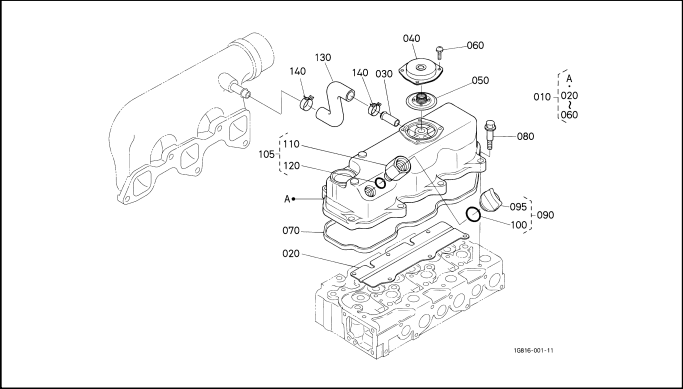
000300 CYLINDER HEAD



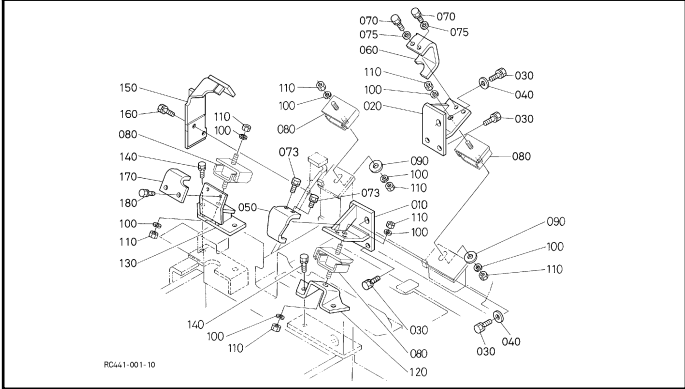
000400 GEAR CASE



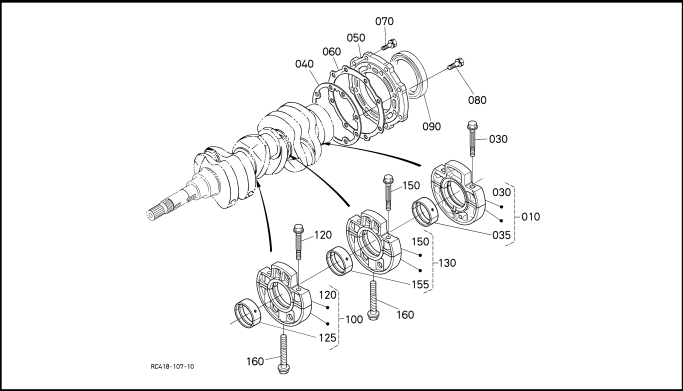
000500 HEAD COVER



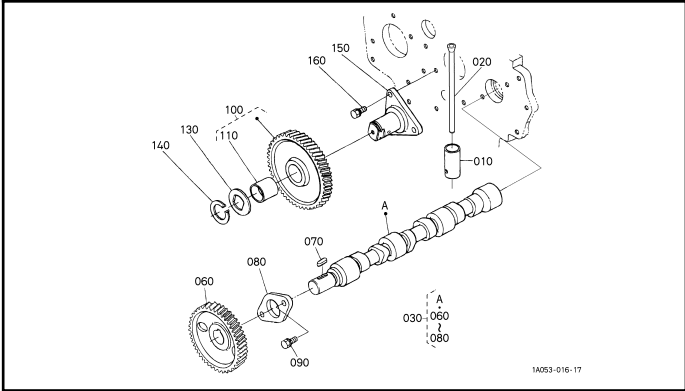
003000 ENGINE BRACKET



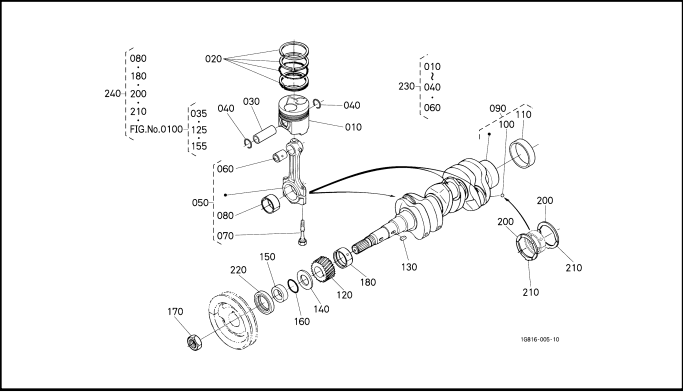
010000 MAIN BEARING CASE



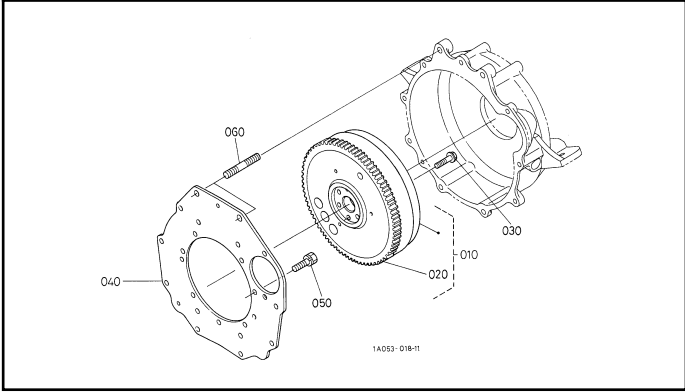
010100 CAMSHAFT AND IDLE GEAR SHAFT



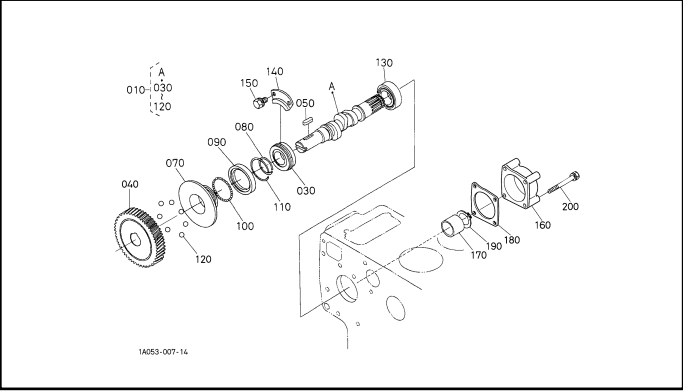
010200 PISTON AND CRANKSHAFT



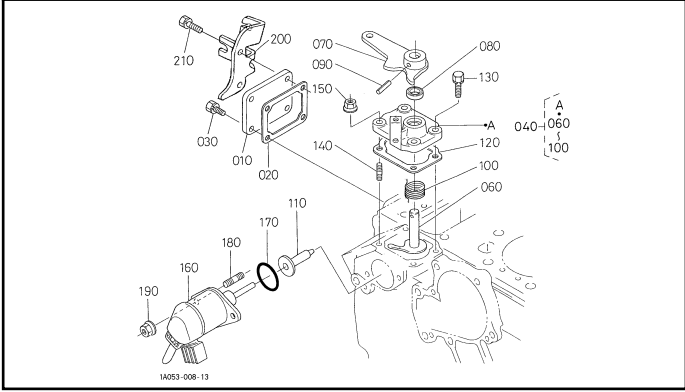
010300 FLYWHEEL



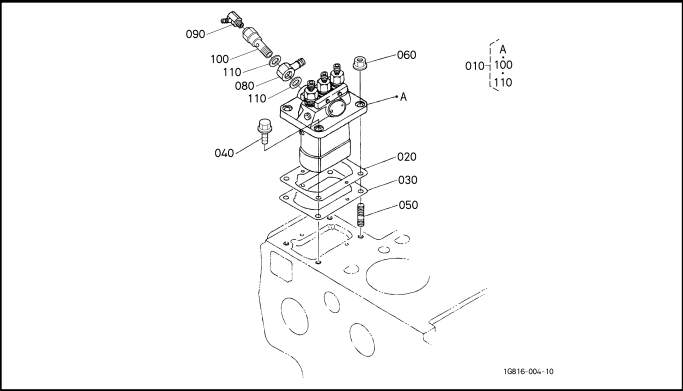
010500 FUEL CAMSHAFT AND GOVERNOR SHAFT



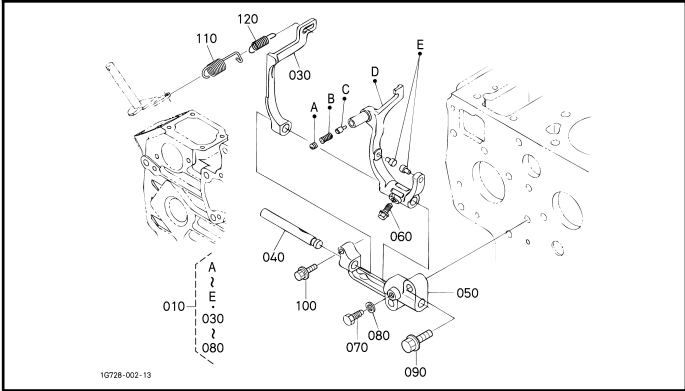
020000 ENGINE STOP LEVER



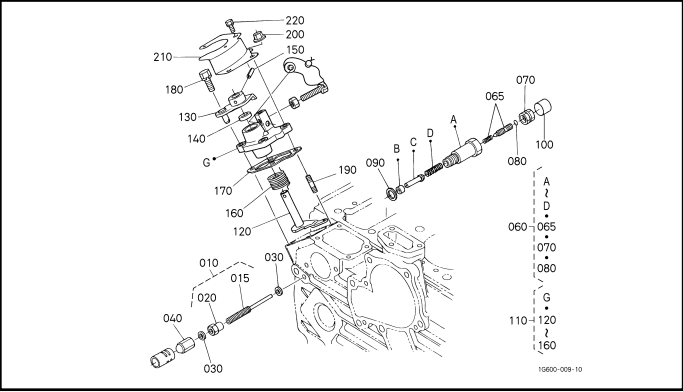
020200 INJECTION PUMP



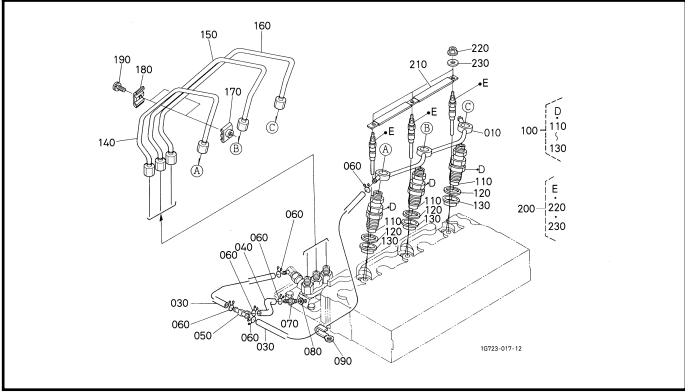
020400 GOVERNOR



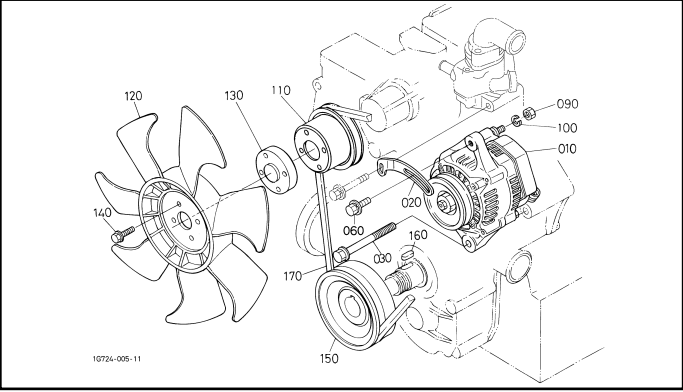
020500 SPEED CONTROL PLATE



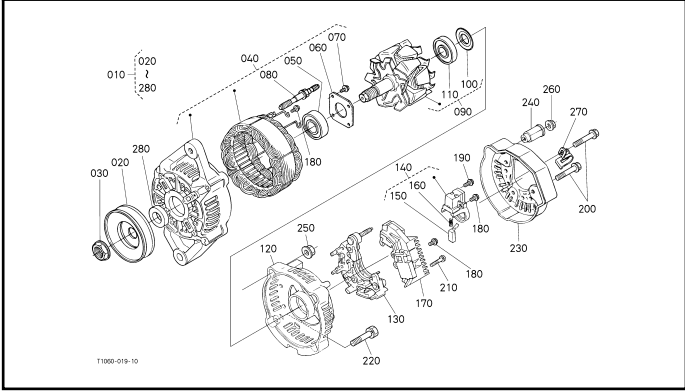
020600 NOZZLE HOLDER AND GLOW PLUG



041300 ALTERNATOR



041400 ALTERNATOR (COMPONENT PARTS)



RP421-031-12

1G724-011-10

Exploded view diagram of the engine assembly. The diagram shows the following components and their assembly order:

- 140**: Top cover
- 150**: Gasket
- 160**: Bolt
- 040**: Bolt
- 045**: Bolt
- 030**: Bolt
- 070**: Bolt
- 050**: Bolt
- 060**: Bolt
- 080**: Bolt
- 090**: Bolt
- 100**: Bolt
- 110**: Bolt
- 120**: Bolt
- 130**: Bolt
- 010**: Bolt
- 020**: Bolt
- 030**: Bolt
- 040**: Bolt
- 050**: Bolt
- 060**: Bolt
- 070**: Bolt
- 080**: Bolt
- 090**: Bolt
- 100**: Bolt
- 110**: Bolt
- 120**: Bolt
- 130**: Bolt
- 140**: Bolt
- 150**: Bolt
- 160**: Bolt
- 170**: Bolt
- 180**: Bolt
- 190**: Bolt
- 200**: Bolt
- 210**: Bolt
- 220**: Bolt
- 230**: Bolt
- 240**: Bolt
- 250**: Bolt
- 260**: Bolt
- 270**: Bolt
- 280**: Bolt
- 290**: Bolt
- 300**: Bolt
- 310**: Bolt
- 320**: Bolt
- 330**: Bolt
- 340**: Bolt
- 350**: Bolt
- 360**: Bolt
- 370**: Bolt
- 380**: Bolt
- 390**: Bolt
- 400**: Bolt
- 410**: Bolt
- 420**: Bolt
- 430**: Bolt
- 440**: Bolt
- 450**: Bolt
- 460**: Bolt
- 470**: Bolt
- 480**: Bolt
- 490**: Bolt
- 500**: Bolt
- 510**: Bolt
- 520**: Bolt
- 530**: Bolt
- 540**: Bolt
- 550**: Bolt
- 560**: Bolt
- 570**: Bolt
- 580**: Bolt
- 590**: Bolt
- 600**: Bolt
- 610**: Bolt
- 620**: Bolt
- 630**: Bolt
- 640**: Bolt
- 650**: Bolt
- 660**: Bolt
- 670**: Bolt
- 680**: Bolt
- 690**: Bolt
- 700**: Bolt
- 710**: Bolt
- 720**: Bolt
- 730**: Bolt
- 740**: Bolt
- 750**: Bolt
- 760**: Bolt
- 770**: Bolt
- 780**: Bolt
- 790**: Bolt
- 800**: Bolt
- 810**: Bolt
- 820**: Bolt
- 830**: Bolt
- 840**: Bolt
- 850**: Bolt
- 860**: Bolt
- 870**: Bolt
- 880**: Bolt
- 890**: Bolt
- 900**: Bolt
- 910**: Bolt
- 920**: Bolt
- 930**: Bolt
- 940**: Bolt
- 950**: Bolt
- 960**: Bolt
- 970**: Bolt
- 980**: Bolt
- 990**: Bolt
- 1000**: Bolt
- 1010**: Bolt
- 1020**: Bolt
- 1030**: Bolt
- 1040**: Bolt
- 1050**: Bolt
- 1060**: Bolt
- 1070**: Bolt
- 1080**: Bolt
- 1090**: Bolt
- 1100**: Bolt
- 1110**: Bolt
- 1120**: Bolt
- 1130**: Bolt
- 1140**: Bolt
- 1150**: Bolt
- 1160**: Bolt
- 1170**: Bolt
- 1180**: Bolt
- 1190**: Bolt
- 1200**: Bolt
- 1210**: Bolt
- 1220**: Bolt
- 1230**: Bolt
- 1240**: Bolt
- 1250**: Bolt
- 1260**: Bolt
- 1270**: Bolt
- 1280**: Bolt
- 1290**: Bolt
- 1300**: Bolt
- 1310**: Bolt
- 1320**: Bolt
- 1330**: Bolt
- 1340**: Bolt
- 1350**: Bolt
- 1360**: Bolt
- 1370**: Bolt
- 1380**: Bolt
- 1390**: Bolt
- 1400**: Bolt
- 1410**: Bolt
- 1420**: Bolt
- 1430**: Bolt
- 1440**: Bolt
- 1450**: Bolt
- 1460**: Bolt
- 1470**: Bolt
- 1480**: Bolt
- 1490**: Bolt
- 1500**: Bolt
- 1510**: Bolt
- 1520**: Bolt
- 1530**: Bolt
- 1540**: Bolt
- 1550**: Bolt
- 1560**: Bolt
- 1570**: Bolt
- 1580**: Bolt
- 1590**: Bolt
- 1600**: Bolt
- 1610**: Bolt
- 1620**: Bolt
- 1630**: Bolt
- 1640**: Bolt
- 1650**: Bolt
- 1660**: Bolt
- 1670**: Bolt
- 1680**: Bolt
- 1690**: Bolt
- 1700**: Bolt
- 1710**: Bolt
- 1720**: Bolt
- 1730**: Bolt
- 1740**: Bolt
- 1750**: Bolt
- 1760**: Bolt
- 1770**: Bolt
- 1780**: Bolt
- 1790**: Bolt
- 1800**: Bolt
- 1810**: Bolt
- 1820**: Bolt
- 1830**: Bolt
- 1840**: Bolt
- 1850**: Bolt
- 1860**: Bolt
- 1870**: Bolt
- 1880**: Bolt
- 1890**: Bolt
- 1900**: Bolt
- 1910**: Bolt
- 1920**: Bolt
- 1930**: Bolt
- 1940**: Bolt
- 1950**: Bolt
- 1960**: Bolt
- 1970**: Bolt
- 1980**: Bolt
- 1990**: Bolt
- 2000**: Bolt
- 2010**: Bolt
- 2020**: Bolt
- 2030**: Bolt
- 2040**: Bolt
- 2050**: Bolt
- 2060**: Bolt
- 2070**: Bolt
- 2080**: Bolt
- 2090**: Bolt
- 2100**: Bolt
- 2110**: Bolt
- 2120**: Bolt
- 2130**: Bolt
- 2140**: Bolt
- 2150**: Bolt
- 2160**: Bolt
- 2170**: Bolt
- 2180**: Bolt
- 2190**: Bolt
- 2200**: Bolt
- 2210**: Bolt
- 2220**: Bolt
- 2230**: Bolt
- 2240**: Bolt
- 2250**: Bolt
- 2260**: Bolt
- 2270**: Bolt
- 2280**: Bolt
- 2290**: Bolt
- 2300**: Bolt
- 2310**: Bolt
- 2320**: Bolt
- 2330**: Bolt
- 2340**: Bolt
- 2350**: Bolt
- 2360**: Bolt
- 2370**: Bolt
- 2380**: Bolt
- 2390**: Bolt
- 2400**: Bolt
- 2410**: Bolt
- 2420**: Bolt
- 2430**: Bolt
- 2440**: Bolt
- 2450**: Bolt

1G724-007-13

This diagram shows the exploded view of a rear wheel hub assembly. The components are labeled with callouts: 010 (hub), 020 (axle), 030 (nut), 040 (washer), 050 (flange), 060 (brake drum), 070 (brake shoe), 080 (brake shoe pin), 090 (brake shoe pin), 100 (brake shoe pin), 110 (brake shoe pin), 120 (brake shoe pin), 130 (brake shoe pin), 140 (brake shoe pin), 150 (brake shoe pin), 160 (brake shoe pin), 170 (brake shoe pin), 180 (brake shoe pin), 190 (brake shoe pin), 200 (brake shoe pin), 210 (brake shoe pin), 220 (brake shoe pin), 230 (brake shoe pin), 240 (brake shoe pin), 250 (brake shoe pin), 260 (brake shoe pin), 270 (brake shoe pin), 280 (brake shoe pin), 290 (brake shoe pin), 300 (brake shoe pin), 310 (brake shoe pin), 320 (brake shoe pin), 330 (brake shoe pin), 340 (brake shoe pin), 350 (brake shoe pin), 360 (brake shoe pin), 370 (brake shoe pin), 380 (brake shoe pin), 390 (brake shoe pin), 400 (brake shoe pin), 410 (brake shoe pin), 420 (brake shoe pin), 430 (brake shoe pin), 440 (brake shoe pin), 450 (brake shoe pin), 460 (brake shoe pin), 470 (brake shoe pin), 480 (brake shoe pin), 490 (brake shoe pin), 500 (brake shoe pin), 510 (brake shoe pin), 520 (brake shoe pin), 530 (brake shoe pin), 540 (brake shoe pin), 550 (brake shoe pin), 560 (brake shoe pin), 570 (brake shoe pin), 580 (brake shoe pin), 590 (brake shoe pin), 600 (brake shoe pin), 610 (brake shoe pin), 620 (brake shoe pin), 630 (brake shoe pin), 640 (brake shoe pin), 650 (brake shoe pin), 660 (brake shoe pin), 670 (brake shoe pin), 680 (brake shoe pin), 690 (brake shoe pin), 700 (brake shoe pin), 710 (brake shoe pin), 720 (brake shoe pin), 730 (brake shoe pin), 740 (brake shoe pin), 750 (brake shoe pin), 760 (brake shoe pin), 770 (brake shoe pin), 780 (brake shoe pin), 790 (brake shoe pin), 800 (brake shoe pin), 810 (brake shoe pin), 820 (brake shoe pin), 830 (brake shoe pin), 840 (brake shoe pin), 850 (brake shoe pin), 860 (brake shoe pin), 870 (brake shoe pin), 880 (brake shoe pin), 890 (brake shoe pin), 900 (brake shoe pin), 910 (brake shoe pin), 920 (brake shoe pin), 930 (brake shoe pin), 940 (brake shoe pin), 950 (brake shoe pin), 960 (brake shoe pin), 970 (brake shoe pin), 980 (brake shoe pin), 990 (brake shoe pin).

1AC95-013-1

PC411-004-13

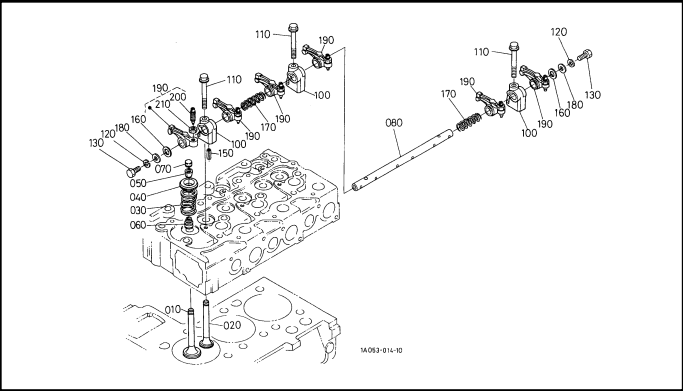
This diagram illustrates the front suspension assembly, showing the relationship between various components. Key parts and their part numbers include:

- Steering Knuckle:** 230, 180, 210, 220, 190, 170, 200
- Control Arms:** 260, 240, 250, 270, 370, 360, 340, 390
- Suspension Springs:** 350, 380, 310, 300, 290, 280
- Other Components:** 140, 170, 160, 230, 010, 230, 070, 060, 070, 020, 110, 130, 120, 100, 080, 030, 070, 040, 070, 050, 070, 320, 330, 090, 350, 380, 360, 340, 390

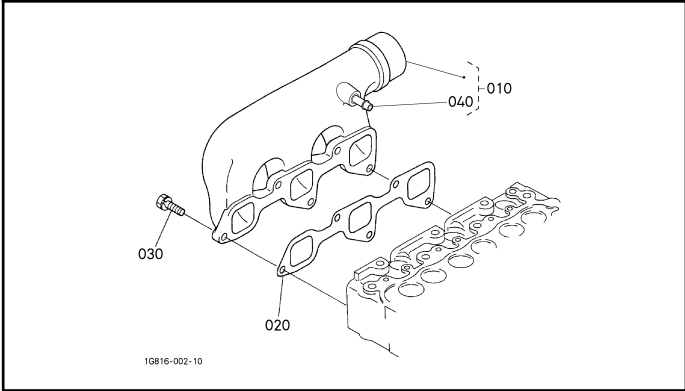
The diagram also shows the location of the front suspension assembly relative to the front of the vehicle, indicated by the arrow pointing towards the front of the car.

RC448-C01-11

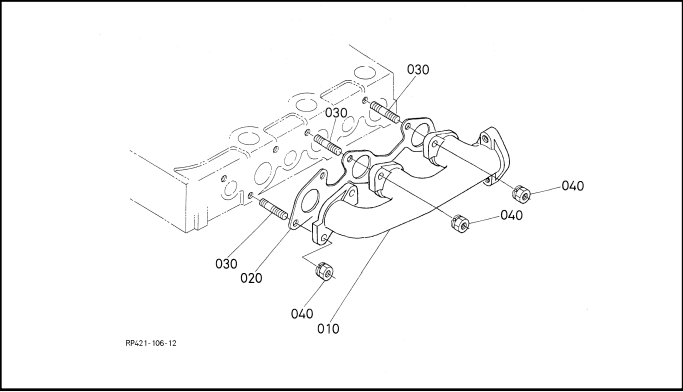
060000 VALVE AND ROCKER ARM



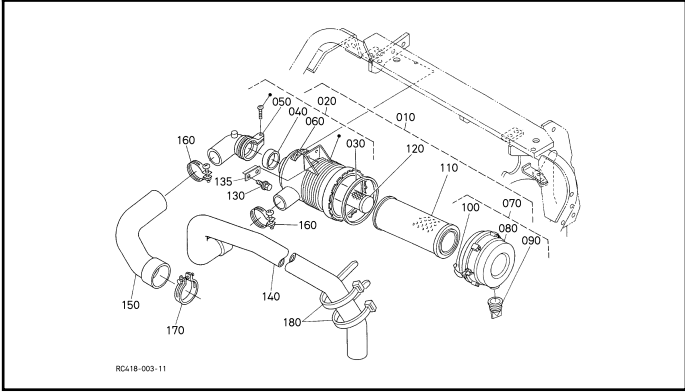
061000 INLET MANIFOLD



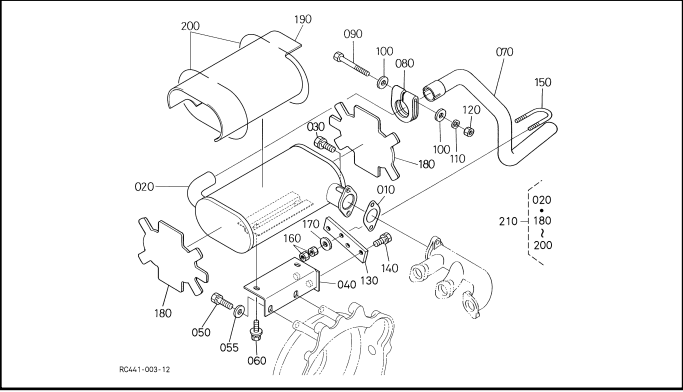
061200 EXHAUST MANIFOLD



061400 AIR CLEANER



061600 MUFFLER



090001 GASKET KIT

