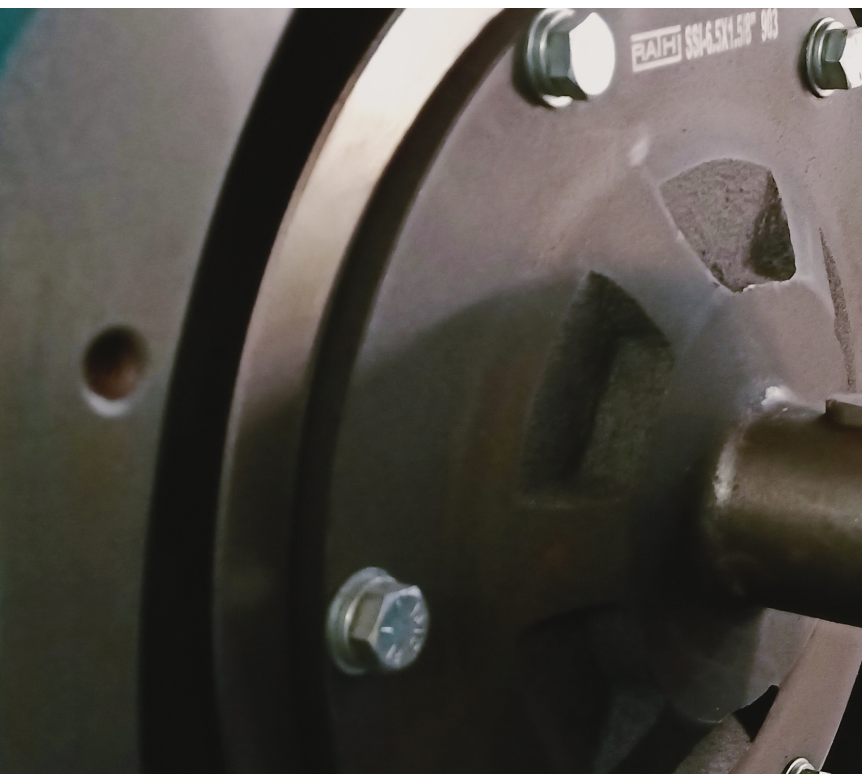




SAE STUB SHAFTS

flywheel mounted SAE stub shaft

CONNECT YOUR ENGINE



UNIQUE DESIGN

One piece design has no welded parts. No point at which to fail, strong, durable, robust design.



Unique One Piece Design

AVAILABLE SIZES

- PTOSHAFT6.5
- SAE 6.5 Flywheel
- Shaft size: 1-5/8"
- PTOSHAFT7.5
- SAE 7.5 Flywheel
- Shaft size: 1-5/8"
- PTOSHAFT10
- SAE 10 Flywheel
- Shaft size: 1-5/8"
- PTOSHAFT10C
- SAE 10 Flywheel
- Shaft size: 2"
- PTOSHAFT11
- SAE 11.5 Flywheel
- Shaft size: 2"
- PTOSHAFT14C
- SAE 14 Flywheel
- Shaft size: 3-1/2"

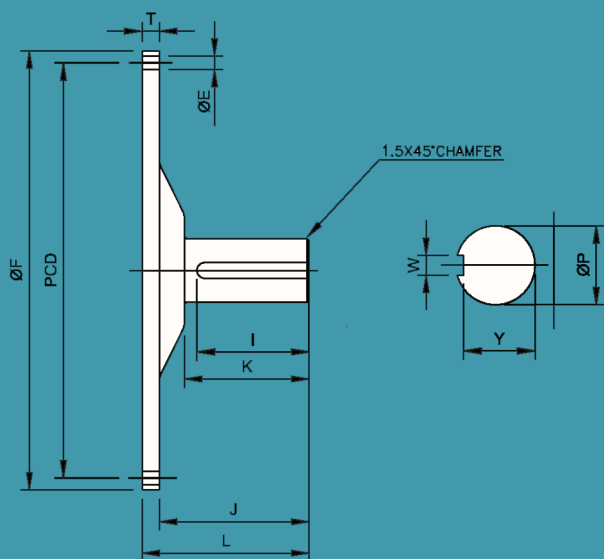


Fig. 'A'

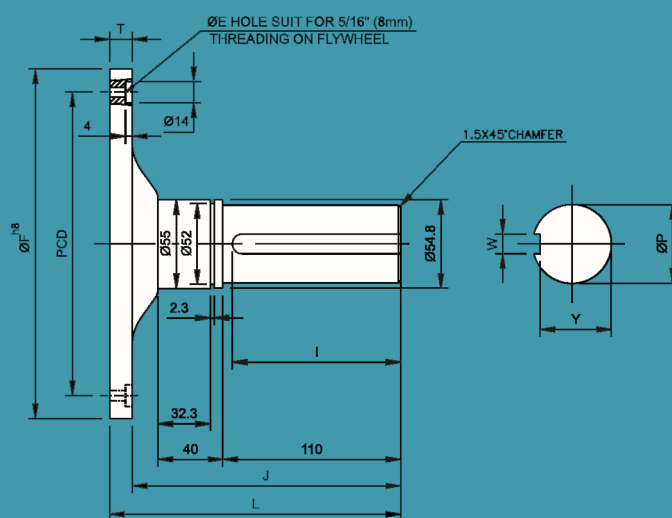


Fig. 'B'

TECHNICAL DATA

SAE Model	T	L	Dia. P	I	J	K	SAE Flange (Inches)				Ref Fig.
							Dia. F	PCD	No. of Holes	Dia. E	
SSI 6.5" X 1 5/8"	14	134	1.625"	90	120	105	8 1/2"	7 7/8"	6	21/64	Fig. A
SSI 7.5" X 1 5/8"							9 1/2"	8 3/4"	8		
SSI 10" X 1.625"			12 3/8"				11 5/8"				
SSI 10" X 2"								13 7/8"		13 1/8"	
SSI 10" X 2" / MF		220		2.0"	176	206			191		
SSI 11.5" X 2"		134	90		120	105					
SSI 11.5" X 2" / MF		220	176		206	191					
SSI 14" X 3.5"	18	228	3.5"	170	210	195	18 3/8"	17 1/4"	17/32		
SAE 6.5" X 42 mm	14	180	42	100	166	150	8 1/2"	7 7/8"	6	8.4	Fig. B
SAE 6.5" X 48 mm			48								
SAE 6.5" X 1 5/8"(B)			1 5/8"								
SAE 7.5" X 48 mm			48				9 1/2"	8 3/4"	8		

SHAFT DIMENSIONS For Fig. 'A'

Dia P	+0.001" -0.000"	+0.006" -0.000"
W	Y	
1.625" +0.0007" -0.0001"	0.437"	1.433"
2.00" +0.0008" -0.0001"	0.499"	1.804"
3.50" +0.0014" -0.0005"	0.874"	3.124"

SHAFT DIMENSIONS For Fig. 'B'

Dia P	+0.0" -0.2"	+0.000" -0.043"
Y	W	
48" +0.018" -0.002"	42.5	14
42" +0.018" -0.002"	37	12
1 5/8" +0.001" -0.000"	1.439" 1.433"	+0.001" -0.000"