

Honan.

Insurance. Advice. Support.

Honan.
Insurance. Advice. Support.

We see you.

What you strive to achieve. We see growth and opportunity. The competition. The risk and reward. We see the decisions you make. The potential, the pitfalls. The successes.

We see what it takes for your business to grow.

That's why we're with you all the way.

With You All The Way.

Honan is disrupting the traditional broker model.

We are passionate about being a true partner, taking the lead as advisor and educator, and thinking creatively about solutions that give you the best business outcomes.



AUSTRALIAN FOUNDED INDUSTRY LEADER

- Founded in Melbourne in 1964
- 400 staff across the Asia Pacific
- \$500m+ client premium
- ANZIIF "Large Broker of the Year" Award Finalist 2021, 2022, and 2023



CLAIMS SOLUTIONS

Our in-house claims experts, lead by industry and legal experts, know how facilities management and services policies and coverages will respond.



SPECIALIST KNOWLEDGE

Proven ability to manage and place unique and complex risk profiles, particularly for Professional Indemnity and Medical Malpractice.



FULLY INTEGRATED SOLUTIONS

Holistic risk and insurance solutions, from program placement and claims management to risk consulting.



REGIONAL SOLUTIONS

Offices across Australia, New Zealand, Singapore and Malaysia.



GLOBAL REACH & INSIGHTS

Relationships with over 130 insurance companies in Australia, Asia, USA and Europe.

Our business is different in all the right ways.

Advice when you need it. **Insurance** solutions tailored to your business. **Support** no matter what.

Our holistic approach is one of our greatest strengths.

Honan goes beyond just insurance, advising leaders on strategies to mitigate current and evolving risks, limit exposure and improve employee safety and retention, so they have the confidence to thrive.

The team at Honan is younger and more diverse than the industry standard. Honan advisors bring **a depth of expertise and fresh thinking** to deliver a high-quality, customer-led, value-added service that's more akin to leading consultancies than the traditional world of corporate insurance.

Our biggest offering in today's insurance marketplace is confidence.

We excel at providing continuity of service.

Our dedicated, highly qualified advisors take the time to truly understand your business, to regularly review your evolving needs, and provide you with purpose-built solutions. Every client knows they matter.

We're alert and responsive.

Our unrivalled global network, exceptional service and greater industry standing with insurer partners enables us to think big, and move quickly with confidence. Maintaining regular contact, we course-correct at pace, delivering the results you need, when you need them.

We are data driven.

Applying our specialist knowledge and rigorous analytics, we keep you abreast of rapidly changing environments, and valuable opportunities. Comfortable with complex risks, we take on challenges others won't.

We keep it personal.

Building strong, stable relationships is in our DNA. Honan have a **98.5% retention rate and a client NPS of 71**. Our clients stay with us because we support our people to provide exceptional service through engaging a strong global ecosystem of experts and advisors.

Go beyond...

Insurance. Advice. Support.

Honan has the expertise and international network to **help protect your business in the most high-risk, complex, or innovative industry** by providing a range of services across insurance, broking, and risk advisory.

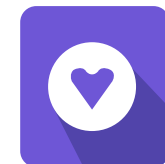
We partner with our clients for the long-term, understanding your business and market holistically to develop creative and strategic solutions that ultimately help you grow with confidence.



FINANCIAL
LINES



CORPORATE
RISK



LIFE
INSURANCE



PERSONAL
LINES



EMPLOYEE
BENEFITS



CLAIMS
MANAGEMENT



GLOBAL
SOLUTIONS



WORKCOVER



RISK ACCOUNTING
& VALUATIONS



STRATA &
REAL ESTATE

From boutique broker to global company.

Underpinned by a client-first approach and a consistent, determined spirit, our story is one of a steady evolution and growth.

On 30th November 2023, Marsh completed its acquisition of the Honan Insurance Group. Marsh is the world's leading insurance broker and risk adviser. With more than 45,000 colleagues operating in more than 130 countries, Marsh serves commercial and individual clients with data driven risk solutions and advisory services. **Marsh is a business of Marsh McLennan (NYSE: MMC), the leading global professional services firm in the areas of risk, strategy, and people.**

This is an exciting new chapter and a growth opportunity for Marsh and Honan, both equally focused on excellent client service, a commitment to the communities in which we work, and in developing our colleagues and expanding opportunities for them.

1964

Geoff Honan founded Honan Insurance Group in Melbourne.

1993

Geoff's son, Damien Honan, took over the family business after joining in 1984 and expanded with an office in Sydney.

2012

Honan continues its growth opening an office in Brisbane, followed by offices in Perth, Singapore and Malaysia over the following years'.

2018

Andrew Fluitsma, was appointed, with Damien taking on the role of Executive Chairman.

2020

Following a strategic growth investment by TA Associates and management, Honan continues to expand both organically and through a series of acquisitions.

2023

Marsh, the world's leading insurance broker and risk advisor and a business of Marsh McLennan, completes its acquisition of Honan Insurance Group

Today

While evolving from small to large, from local to international, Honan retains a reputation for integrity and distinction.

Creating a bigger impact

At Honan, we believe strong business and contribution to society go hand in hand.

From improving the lives of our employees and creating a better future through our charity work, to ensuring we are taking steps towards doing our part for the environment, we are taking our social impact seriously for our employees, customers, and the wider community. We strive to realise this vision through our ESG strategy – Inclusion, Wellbeing, Giving Back, and Sustainability.

INCLUSION



Fostering an environment that welcomes and embraces different perspectives, cultures, and diversity of thought, ensuring that everyone feels safe, has a voice, can be seen and has a sense of belonging.

GIVING BACK



Providing an authentic contribution to our community through financial support, in kind contributions and volunteering initiatives.

WELLBEING

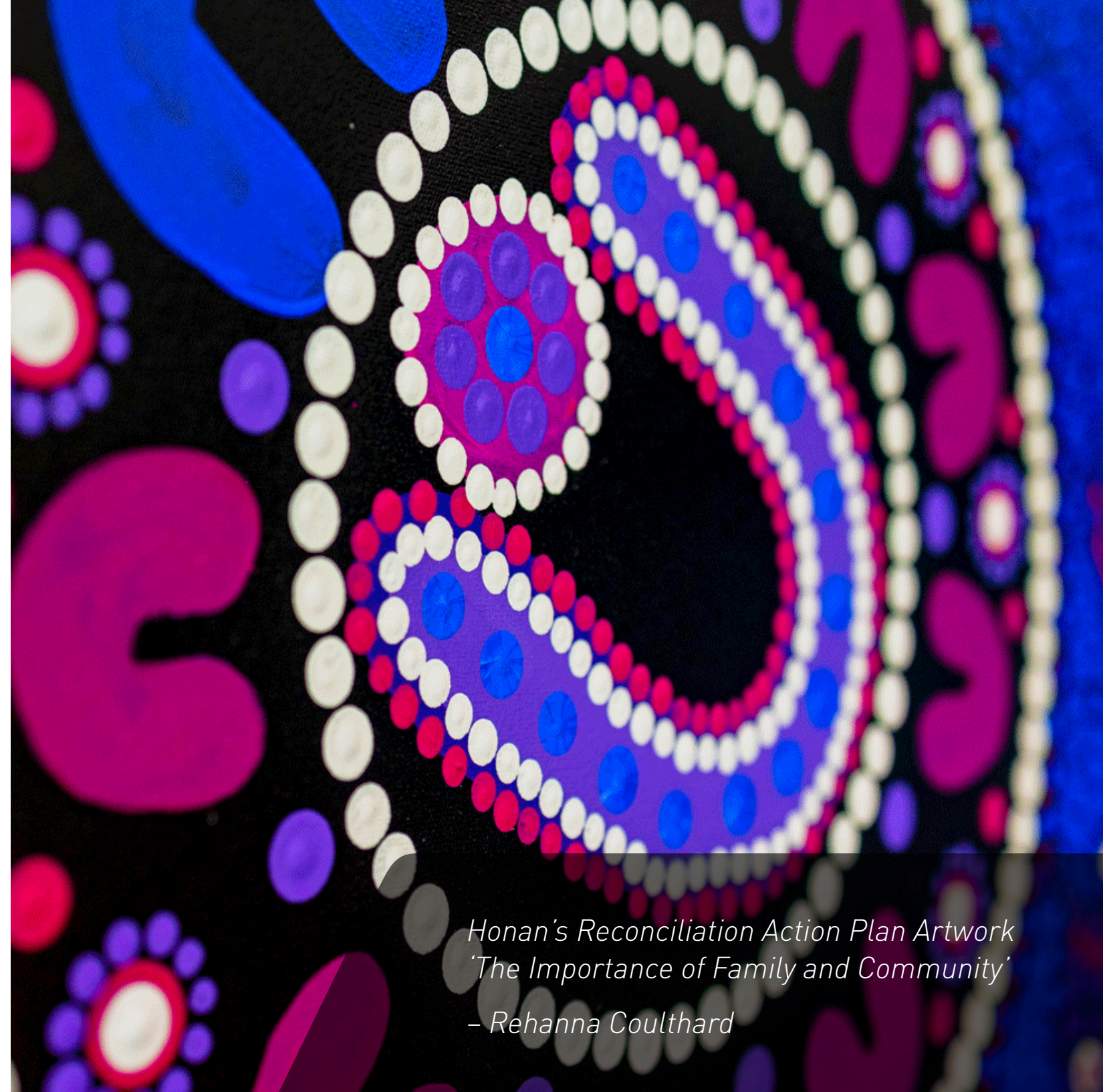


Wellbeing at Honan is an ecosystem defined by four categories – mental, physical, spiritual and financial, encouraging a sustainable approach to maintaining a balanced work / home lifestyle and individual ownership of our own holistic health.

SUSTAINABILITY



Creating and adopting company wide practices that reduce our carbon footprint, waste production, and energy consumption, whilst contributing to the wider conversation on how to drive sustainability in the insurance industry.



*Honan's Reconciliation Action Plan Artwork
'The Importance of Family and Community'
– Rehanna Coulthard*

We see you.

We understand insurance is not a daily conversation. It can fade into the background of more immediately pressing matters. Yet it is of incredible value and relevance to the dreams you have for your business, for achieving growth, your goals and for the well-being of your employees and their families.

At Honan, we go beyond 'just insurance', providing advice on strategies to mitigate both current and evolving risks, limit exposure, and offering support to improve your employee safety and retention.

We understand the leap from desire to fulfilment and the risks involved. Just like you, we are in the business of offering greater results for our clients. We're with you all the way.



ANDREW FLUITSMA
CHIEF EXECUTIVE OFFICER

Contact us

Melbourne	Sydney	Brisbane	Perth	Adelaide
Level 9, IBM Centre, 60 City Road, Southbank, VIC 3006	Level 6, 1 Margaret Street, Sydney NSW 2000	Level 13, 40 Creek Street, Brisbane QLD 4000	Level 4, 251 St Georges Terrace, Perth WA 6000	Level 1, 89 Pirie Steet, Adelaide SA 5000
+61 3 9947 4333	+61 2 9299 0767	+61 7 3368 3708	+61 8 6557 0400	+61 437 080 655

Darwin	Auckland	Singapore	Kuala Lumpur
Level 1, 48-50 Paspalis Centrepont Darwin, NT, 0800	Level M, 17 Albert St, Auckland, New Zealand 1010	#20-03, 1 Raffles Place, Singapore 048616	Suite 8.01, Level 8, The Gardens North Tower, Lingkaran Syed Putra, Mid Valley City 59200, Kuala Lumpur
+61 437 080 655	+64 22 151 4264	+65 6323 3411	+60 3 2282 0891

Email: info@honan.com.au



Our deep understanding of your business will give you the freedom to steer your company where it deserves to go.



Honan.

STAY CONNECTED WITH US

 [HONAN.COM.AU](https://www.honan.com.au)

 [HONAN INSURANCE GROUP](#)