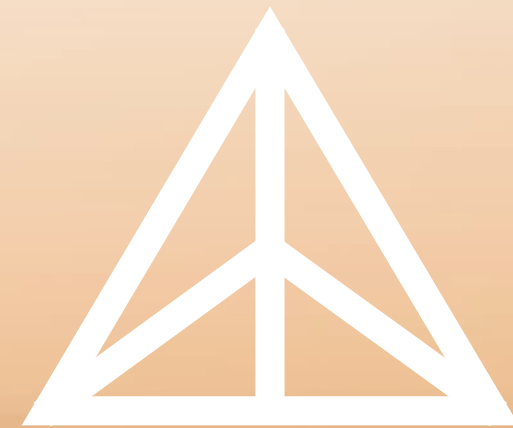




Polestar 1
performance electrified



FIVER

WINTER 2017
EDITION

SEASONAL
FASHION FOR
MEN & WOMEN

LUXURIOUS
WINTER
GETAWAYS

THE NEW MUST
HAVE GADGETS

THE NEWEST
POSH ADDRESS
IN NYC

BROADWAY
PRODUCTIONS
THIS SEASON

FASHION • INTERESTS • VEHICLES • ENTERTAINMENT • REAL ESTATE



THIS HOLIDAY SEASON
GIVE HER A SNOWFLAKE
SHE CAN WEAR

TIFFANY & Co.

NEW YORK SINCE 1837

TABLE OF
CONTENTS

SEASONAL
MENS FASHION PAGES
WINTER LOOK BOOK 8-9
EMP. ARMANI
RALPH LAUREN
TOM FORD

WOMENS FASHION PAGES
WINTER LOOK BOOK 4-7
LOUIS VUITTON
RALPH LAUREN
GIVENCHY
CHANEL & DVF

BROADWAY PRODUCTIONS PAGES
10-11

NEW COMPACT LUXURY SUVS PAGES
12-13

THE NEW MUST HAVE GADGETS PAGES
14-15

THE NEWEST POSH ADDRESS IN NYC PAGES
16-17

ASPEN COLORADO THE NEW WINTER DESTINATION PAGES
18-19

GIVENCHY 2017
WINTER COLLECTION
NOW AVAILABLE

BARNEYS
NEW YORK





A



B



C

LOUIS VUITTON A
KNITTED FLORAL
DRESS 2830.00
GIVENCHY B
BLACK FLORAL
DRESS 2600.00
GIVENCHY C
DETAILED LACE
DRESS 2432.00
GIVENCHY D
DRAPED RED
DRESS 2324.00
RALPH LAUREN E
BLACK WOOL MERINO
DRESS 675.00
GIVENCHY F
STRUCTURED BLACK
DRESS 3192.00



D



E



F



A



B



C

RALPH LAUREN A
GREY KEYHOLE
DRESS 475.00
RALPH LAUREN B
GREEN LACE
DRESS 398.00
RALPH LAUREN C
SLEEVED BLACK
LACE DRESS 454.00
RALPH LAUREN D
BLACK WOOL BLEND
COAT 378.00
RALPH LAUREN E
HERRINGBONE
COAT 365.00
GIVENCHY F
PINK FOX FUR
CAPE 2210.00



D



E



F

A GIVENCHY
ASYMMETRICAL LACE
BLOUSE 1100.00
B RALPH LAUREN C
REPE SPLIT RED
BLOUSE 298.00
C RALPH LAUREN
SILK BOWTIE
BLOUSE 265.00
D GIVENCHY
STRAIGHT BLACK
PANTS 375.00
E GIVENCHY
STRAIGHT RED
PANTS 375.00
F RALPH LAUREN
SLIM BLUSH
PANTS 186.00



A



B



C



D



E



F

A LOUIS VUITTON BLACK
MONOGRAM 275.00
B LOUIS VUITTON FUCH-
SIA MONOGRAM 275.00
C LOUIS VUITTON PINK
MONOGRAM 275.00
D LOUIS VUITTON NAUTI-
CAL MONOGRAM 275.00
E LOUIS VUITTON
MIDNIGHT MONOGRAM
275.00
F LOUIS VUITTON EVE-
NING MONOGRAM 275.00
G LOUIS VUITTON BLUSH
MONOGRAM 275.00
H LOUIS VUITTON SILVER
MONOGRAM 275.00
I LOUIS VUITTON FLORAL
MONOGRAM 275.00
J RALPH LAUREN BLACK
LEATHER GLOVES 98.00
K RALPH LAUREN TAUPE
LEATHER GLOVES 98.00
L RALPH LAUREN CORSET
LEATHER GLOVES 98.00



A



B



C



D



E



F



G



H



I



J



K



L



CHANEL BULLSKIN A
BLACK BAG 3500.00
CHANEL CALFSKIN B
WHITE 4200.00
CHANEL CALFSKIN C
TEAL BAG 6100.00
CHANEL BULLSKIN D
NAVY BAG 3800.00
CHANEL LAMBSKIN E
GREEN BAG 2800.00
CHANEL METALLIC F
BACKPACK 5900.00
CHANEL LAMBSKIN G
BLACK BAG 2800.00
CHANEL WHITE H
BACKPACK 3700.00
CHANEL CALFSKIN I
PINK BAG 3100.00
CHANEL CALFSKIN J
FUSCHIA HANDLE
BAG 3200.00
CHANEL GREEN K
BACKPACK 3900.00
CHANEL ROSEWOOD L
BAG 3400.00



CHANEL CALFSKIN A
BLUE CLUTCH 2400.00
CHANEL CALFSKIN B
YELLOW CLUTCH
2400.00
CHANEL CALFSKIN C
RED CLUTCH 2400.00
CHANEL CALFSKIN D
BLACK CLUTCH 4500.00
CHANEL CALFSKIN E
BLUSH CLUTCH 4500.00
CHANEL CALFSKIN F
TEAL CLUTCH 4,200
VERSACE PALAZZO G
EMPIRE BLACK 2150.00
VERSACE PALAZZO H
EMPIRE BLUE 2150.00
VERSACE PALAZZO I
EMPIRE NEON 2150.00
VERSACE PALAZZO J
EMPIRE TEAL 2150.00
VERSACE PALAZZO K
EMPIRE TONE 2150.00
VERSACE PALAZZO L
EMPIRE GREY 2150.00

A VERSACE UNITY ANKLE
PUMPS 1025.00
B VERSACE PALAZZO
TRI PUMPS 995.00
C VERSACE PALAZZO
FLOWER PUMPS 995.00
D VERSACE PALAZZO
NAVY PUMPS 875.00
E RALPH LAUREN KINLEY
LEATHER HEEL 298.00
F RALPH LAUREN PENY
LOAFER FLAT 260.00
G RALPH LAUREN BRIN
SUEDE HEEL 279.00
H RALPH LAUREN RED
SUEDE PUMPS 250.00
I LOUIS VUTTON GOLD
HIGH-TOPS 910.00
J LOUIS VUTTON WHITE
HIGH-TOPS 810.00
K LOUIS VUTTON EYELINE
NUDE PUMPS 890.00
L LOUIS VUTTON EYELINE
BORDEAUX RED PUMPS
890.00



A VERSACE PALAZZO
WHITE PUMPS 875.00
B VERSACE PALAZZO
PINK PUMPS 875.00
C VERSACE DIAMANTE
BLACK PUMPS 775.00
D RALPH LAUREN NAVY
LEATHER PUMP 275.00
E RALPH LAUREN KINLEY
SUEDE PUMP 298.00
F RALPH LAUREN REAVE
SUEDE PUMP 298.00
G GIVENCHY RED STRAP
SNEAKERS 465.00
H GIVENCHY SILVER
STRAP SNEAKERS
365.00
I DVF DEVON WHITE
BOOTIES 398.00
J DVF MILES TRI TONE
BOOTIES 438.00
K DVF LAREDO WHITE
PUMP 169.00
L DVF CANITA LEATHER
BOOTS 398.00





A



B



C

RALPH LAUREN A
DOUBLE-KNIT GREY
BOMBER 145.00

TOM FORD B
WOOL GREY
SPORT COAT 5496.00

RALPH LAUREN C
PACKABLE FIELD
COAT NAVY 750.00

RALPH LAUREN D
DENIM WASH
JACKET 490.00

TOM FORD E
SILK NAVY
SPORT COAT 4525.00

RALPH LAUREN F
ROUGHOUT SUEDE
JACKET 1900.00



D



E



F



A



B



C

RALPH LAUREN A
SADDLE LEATHER
BOMBER 550.00

RALP LAUREN B
NAVY DRESS
SHIRT 100.00

RALPH LAUREN C
TARTAN GREY DRESS
SHIRT 100.00

RALPH LAUREN D
GREY DRESS
SHIRT 100.00

RALP LAUREN E
BLACK CHECKERED
DRESS SHIR 100.00

RALPH LAUREN F
RED FLANEL
SHIRT 125.00



D



E



F

A RALPH LAUREN
HEATHER GREY CHINO
135.00

B TOM FORD
BROWN HEATHER CHINO
135.00

C RALPH LAUREN
NAVY HEATHER CHINO
135.00

D ADIDAS
PH TEAL WINDBREAKER
180.00

E ADIDAS
REP. WINDBREAKER
215.00

F ADIDAS
CHAMPAGNE BOMBER
155.00



A



B



C



D



E



F



A



B



C



D



E



F



G



H



I



J



K



L

A RALPH LAUREN RED
FLANEL SCARF 75.00

B RALPH LAUREN GREY
SILK SCARF 75.00

C RALPH LAUREN SILVER
SILK SCARF 75.00

D RALPH LAUREN GREEN
FLANEL SCARF 75.00

E RALPH LAUREN BROWN
LEATHER GLOVES 98.00

F RALPH LAUREN QUILTED
LEATHER GLOVES 69.00

G RALPH LAUREN ATLEY
WINGTIP 325.00

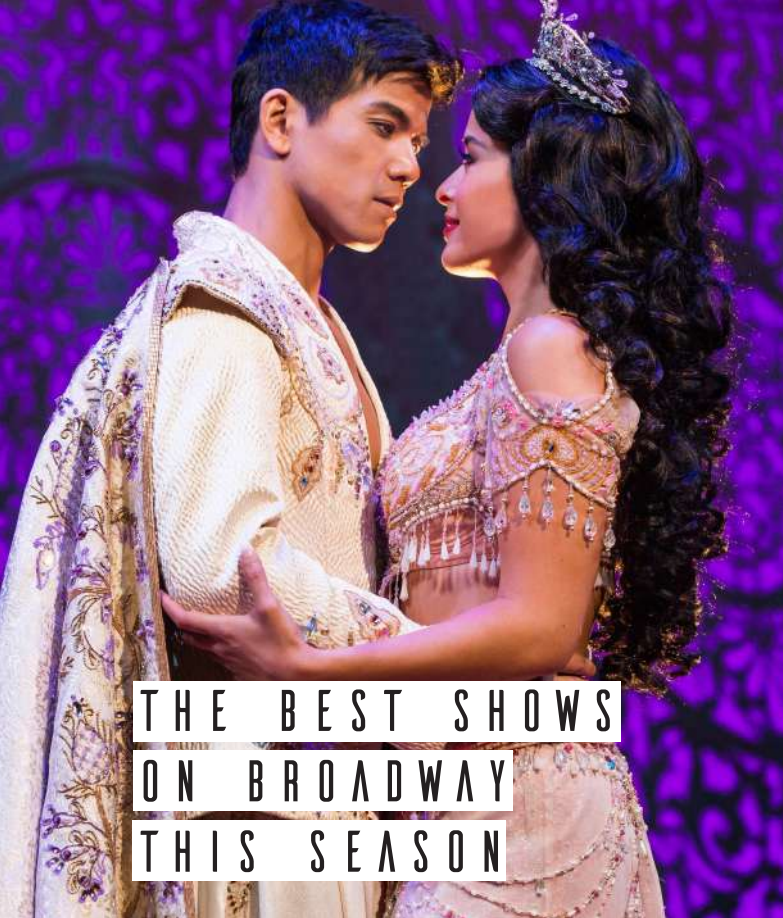
H TOM FORD WARWICK
SNEAKERS 890.00

I TOM FORD WHITE
WARKWICK SNEAKER
890.00

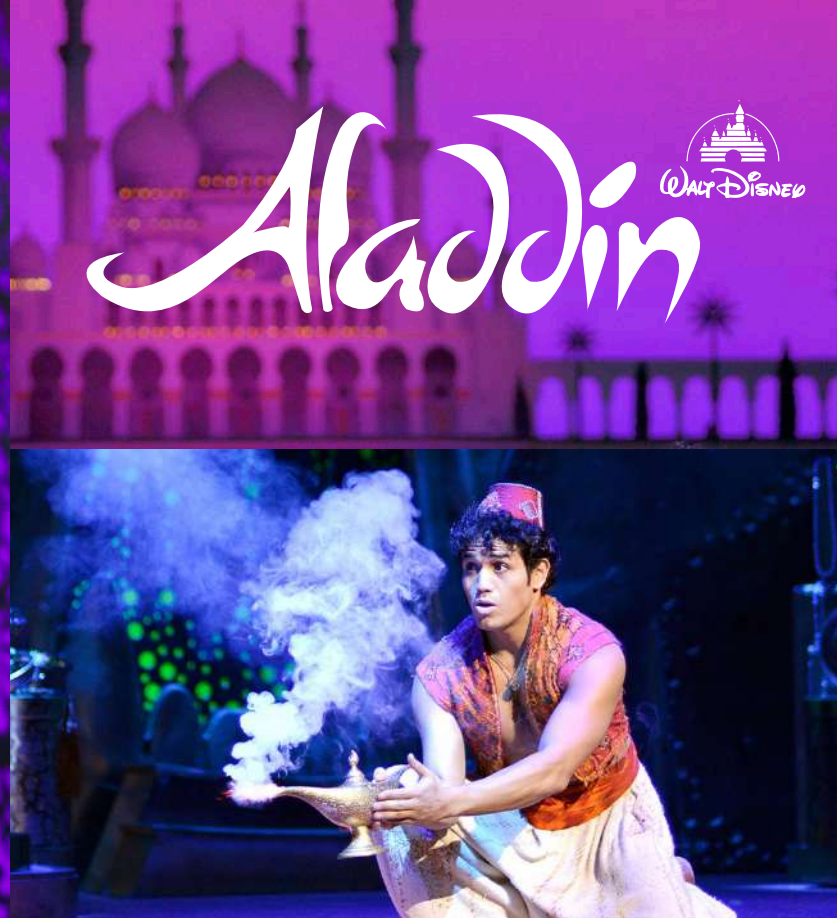
J RALPH LAUREN GREY
HIGH-TOPS 428.00

K YEEZY PEPPER GREY
SNEAKERS 1350.00

L YEEZY BEIGE
SNEAKERS 1350.00



THE BEST SHOWS
ON BROADWAY
THIS SEASON



WALT DISNEYS ALADDIN

Aggrabah, Princess Jasmine is feeling hemmed in by her father's desire to find her a royal groom. Meanwhile, the Sultan's right-hand man, Jafar, is plotting to take over the throne. When Jasmine sneaks out of the palace incognito, she forms an instant connection with Aladdin, a charming street urchin and reformed thief. After being discovered together, Aladdin is sentenced to death, but Jafar saves him by ordering him to fetch a lamp from the Cave of Wonders. Once Aladdin unwittingly lets the Genie out, anything can happen! Will Aladdin's new identity as "Prince Ali" help him win Jasmine's heart and thwart Jafar's evil plans? Will the Genie's wish for freedom ever come true?

by Lilly Freemont **FIVER** entertainment

CAST MEMBERS

Aladdin • Telly Leaug
Jasmine • Courtney Reed
Genie • Major Attaway
Jafar • Jonath Freeman



SHOWINGS

New Amsterdam Theatre
New York, NY

12.12.17
1:00 pm 7:00 pm

12.15.17
2:00 pm 8:00 pm

12.16.17
2:00 pm 8:00 pm

12.20.17
1:00 pm 7:00pm

12.22.17
2:00 pm 8:00 pm

12.23.17
2:00 pm 8:00 pm

12.27.17
1:00 pm 7:00 pm

War Horse



NICK STRAFFORDS WAR HORSE

War Horse centers on the relationship between Albert, a teenager growing up on a farm in Devon, England, just before World War I, and his beloved half-thoroughbred horse, Joey. Albert's family is poor, and his father raises cash by selling Joey to the cavalry as the war begins in 1914. Too young to enlist, Albert craves news of his horse, which was shipped to the battlefield in France. Three years later, Albert runs away to join the army, determined to find Joey and bring him home. Meanwhile, this smart and brave horse is pulled into service on both sides of the conflict before being left on his own in no-man's-land, surrounded by trenches and barbed wire. War horse is thrillingly unique

by Kathy Lawson **FIVER** entertainment

CAST MEMBERS

Joey • Stephen Anthony
Srgt. Fine • Zach Appleman
Rose Narcott • Alyssa Bresnahan
Srgt. Thunder • Richard Crawford



SHOWINGS

Lincoln Center Theatre
New York, NY

12.13.17
11:00 am 6:00 pm

12.17.17
10:00 am 5:00 pm

12.19.17
11:00 am 6:00 pm

12.22.17
10:00 am 5:00pm

12.24.17
3:00 pm 10:00 pm

12.28.17
9:00 am 4:00 pm

12.30.17
11:00 am 6:00 pm



2018 VOLVO XC60 INSCRIPTION T8

Volvo's 2018 XC60 carries on the Swedish brand's breathtaking visual makeover under the direction of design chief Thomas Ingenlath. With crisp lines, beautifully restrained surfacing. This XC60 presents a more elegant exterior than the previous model. But a rising beltline, subtle haunches over the rear wheels, a more steeply raked windshield and a shorter wheelbase ensure the XC60 is still perceived as the sportier alternative to the larger XC90. The XC60's interior is a textbook example of 21st century Scandinavian Zen: Studied, airy, and sophisticated. Standard equipment levels are high, including the nine-inch central touchscreen, moonroof, power front seats, leather on the seat surfaces, and a power tailgate. Because, they're Volvos, all XC60s come with an impressive list of safety equipment, including active systems that help avoid collisions, keep you on the road, and keep you in the right lane on the road, plus the full complement of passive safety equipment, from curtain airbags to whiplash protection. The T8 Inscription tips the scales at 4,638 pounds. Even so, the turbo and supercharged

4-cylinder engine and the rear electric motor creates immense power. Producing a total of 400 hp and 472 lb-ft of torque. Pushing the SUV of the line from 0-60 mph in 4.9 seconds. Which translates to superior performance on the freeway and the track. Volvo ticked all the option boxes on our T8 tester. In addition to the Inscription trim hardware, it came equipped with the same \$1,100 Vision Package as along with a \$2,000 Convenience Package that includes a number of semi-autono-



mous driving options, a \$3,000 Luxury Package with full Nappa leather trim, a heated steering wheel, heated rear seats, and heated and cooled front seats, and a \$1,900 Advanced Package that features a 360-degree camera, a heads-up display, and active LED headlights. It didn't stop there: Underneath was the \$1,800 air sus-

pension setup, and the interior resonated to the dulcet tones of the \$3,200 Bowers and Wilkins premium audio system. With all those goodies the T8 raises from a base price of \$56,750 to \$75,590. But, unlike most carmakers who just focus on luxury and performance Volvo heavily concentrates on vehicle safety. Resulting the Volvo XC60 being built to withstand roll over, side impact, and head-on collisions without serious injury to the driver or passengers. The XC60 has thereby

received IIHS top safety pick, receiving five stars in all categories. Therefore, the Volvo XC60 is held in high regard amongs the vehicle testers at **FIVER**. As Volvo's offering provides immense luxury, preformance, and safety in a stunning Sandinavian design.

by Mitchell Colloway **FIVER automotive**

2018 RANGE ROVER VELAR R-DYNAMIC HSE

Range Rover's all new Velar is the British automaker's newest SUV. The Range Rover Velar is very much chasing the luxury compact crossover segment-within-a-segment, playing catch up with BMW X3, Mercedes GLE, and the Volvo XC60. It's base price of \$50,935 is priced close to the XC60, the Audi Q5, and with a few options added on, it places itself among even more rarified competitors, like the Porsche crossover and the X4. What sets the Velar apart is the exaggerated minimalism of the proportions. The overhang behind the rear axle that goes on forever, the choptop roof, the swipe of the Stripe, the trimmed down lighting, the door handles: It's postgrad design minimalism in all the best ways. On the inside, the Velar is an escape capsule, refined and quiet. The dashboard is dominated by two 10-inch touchscreens, the core of the new InControl Touch Pro Duo system, that are glossy black when the car is off. The screens are flush with the console. Gone are the separate buttons and knobs for the terrain response systems, replaced by on-screen

controls and two simple, multifunction rotary controllers. At startup, a dial for the transmission rises from the lower console. There are new capacitive switches on the steering wheel. The tested model is equipped with the Meridian Signature 23 speaker surround sound system. This 1600 watt system produced concert like audio, isolating



the interior from the outside noise. In terms of on road handling, the Range Rover Velar is well balanced in corners and smooth as glass on highways, with all that perfectly balanced steering feel that Range Rover puts into its product (Range Rover, as everyone knows, has the best steering feel in the SUV business, bar none). For the passenger, it is a magic carpet ride. The Range Rover Velar R-Dynamic

HSE, the trim level we tested, is priced close to \$90,000, in the same ballpark as its feline cousin, the Jaguar F-Pace, which shares a suspension design and the lightweight aluminum architecture. It is equipped with electronically-controlled air suspension. The entry-level Velar makes do with a 247-horsepower turbocharged inline-four. A step above

that, there's the supercharged V-6. Expect to spend at least \$65,195 to get a 380-hp variant in the Velar S. Finally, there's 180-hp turbo-diesel four-cylinder with 317 lb-ft of torque for those who prefer high-compression combustion. Therefore, as luxury automotive experts at **FIVER** we recommend the Velar for individuals looking for an SUV with class and advanced technology.

by Hayes Bishop **FIVER automotive**



NEW MUST HAVE GADGETS



iPhone X 256GB -1499

Apple has added many features and improvements to the Watch. This year's Series 3 builds on that with optional LTE connectivity. The Apple Watch's design is iconic. Its rounded rectangular shape is distinctive enough that I can easily spot one from across a room or subway car, and it's compact

Ten years since the iPhone was first unveiled and Apple has marked the occasion with a new iPhone that doesn't just jump one generation, it jumps several. Apple has leapt straight from iPhone 7 (via the iPhone 8, reviewed here) all the way to iPhone 10 (yes, that's how you are supposed to say it), bypassing the iPhone 7s and leapfrogging the iPhone 9 altogether. Despite rumours of limited stock, the iPhone X is finally in stores. Thousands of people queued around blocks the world over to pick up the new Apple handset on launch day, in scenes we haven't seen for a few years. All Apple had to do to get so much attention was redesign the iPhone. The iPhone X is a step up in build quality from every iP-

by Laura Henry

FIVER technology

hone that precedes it. Even the glass-backed iPhone 8 isn't as nice to hold as it lacks the premium stainless steel rim of the X. Cool to the touch, it has a grippy texture and a smooth shape that harks back to the iPhone 3G (the successor to the original iPhone), while the glass surround is reminiscent of the iPhone 4. This phone marks a new beginning for Apple. The notch isn't there just to annoy us, though, its presence is due to all the technology that goes into Face ID. A closer look will reveal an infrared camera, flood illuminator, and dot projector. At **FIVER** we recomend the iPhone X to readers looking for the latest and greatest.

by Laura Henry

FIVER technology



Apple Watch
SERIES THREE
Ceramic White - 1299.00

Apple Watch
SERIES THREE
Ceramic Grey - 1299.00



Apple Watch
SERIES THREE
Silver Stainless Steel - 699.00

Apple Watch
SERIES THREE
Silver Stainless Steel - 799.00



Apple Watch
SERIES THREE
Gold Aluminum - 399.00

Apple Watch
SERIES THREE
Silver Aluminum - 399.00



432 Park Avenue



THE NEW POSH
ADDRESS FOR THE
AFFLUENT



PREMIUM LIVING AT 432 PARK AVENUE TOWER

Along a stretch of New York City's Park Avenue, between 56th and 57th Street, soars a tower so jaw-droppingly altitudinous that King Kong himself would likely think twice before scaling it. Its rooftop, roughly a quarter of a mile high, makes it the tallest building in New York and the highest residential tower in the western hemisphere. At 96 stories (1,396 feet), it has no company in the space it occupies atop Manhattan's skyline. The Empire State Building tops out some 150 feet below that. Absent its spire, the newly built World Financial Center—itsself a giant—is 28 feet shorter than this new cathedral to uber-wealth. 432 Park Avenue can be seen from all five boroughs of New York City, from inbound Metro-North trains coming in along the Harlem River, from the Meadowlands in New Jersey, and from several vantage points on Long Island. Its lone silhouette dominates the skyline from every angle. It demands your attention in a way that no residential building ever has. The most remarkable thing about 432 Park, however, is not just its sheer size. It is the fact that, in a building so tall and imposing, with over

400,000 square feet of usable interior space, there are only 104 units for people to live in. 432 Park Avenue is, in short, a monument to the epic rise of the global super-wealthy. It is the house that historic inequality built. It is widely believed that the building will only be one-quarter occupied at all times, even though it will be completely sold out. Keep in mind that these are pied-a-terres that begin at \$7 million each and include several full-floor parcels in the \$75 million range. More than anything else, this speaks to the insatiable appetite of the world's greatly expanded billionaire class. Middle Eastern oil magnates, Chinese billionaires, Russian oligarchs, and the Latin American aristocracy all have one thing in common: More money than they know what to do with and a desperation to get as much of it out of their home countries as possible. New York real estate works very well as both a facilitator of this as well as a store of value. The building designed by Uruguayan architect Rafael Viñoly, 432 Park Avenue's skinny concrete façades present a grid of oversized windows that measure 10 feet by 10 feet. photographs

inside the residences show equally restrained interiors appointed with a carefully curated selection of furnishings. designed by new york architect deborah berke, other features include 12.5-foot ceiling heights, solid oak flooring, and italian marble countertops. developers CIM group and Macklowe properties have also released details of the scheme's 30,000 square feet of amenities. the exclusive spaces include a private restaurant helmed by a michelin-starred chef, an extensive fitness center, and an 18-seat screening room. three full floors in the tower are dedicated to dining, entertainment, and wellness. these levels are all double-height, with 28-foot ceilings. michelin-starred Chef Shaun Hergatt and restaurateur Scott Sozmen will open a restaurant and lounge that encompasses the entire 12th floor, as well as an adjacent 5,000-square-foot terrace overlooking 57th street. designed by bentel & bentel, this storey also possesses installations by lighting firm lasvit, including a pair of 22-foot tall cascading chandeliers each with 55,700 pieces of handset crystal.

The 14th floor features a fitness center, as well as a yoga studio, billiards room (with library curated by publisher assouline), 18-seat screening room with projection equipment and 220-inch screen, and a mahogany paneled executive boardroom. On The 16th floor has travertine walls and flooring surrounding a 75-foot two-lane

indoor swimming pool and separate jacuzzi. On the same floor men's and women's locker rooms feature steam, sauna, and treatment rooms for massage and spa services. Their is also an on-site fitness manager helps curate wellness, nutrition, and therapy programs. In a statement the CIM group developer Macklowe states "If

somebody thinks a 1,400-foot building is boring, well, I just don't get that," he said. To those who find it crass, he pointed to the hundreds of workers building and soon operating the tower. Macklowe recalled a worker saying 'Thank you. Because of this building, I can afford my own house.'

by Diane Rothensburg **FIVER** realestate



ASPEN COLORADO THE WINTER DESTINATION

Ahhh, Aspen, where do we start? It is a world-class destination with outdoor adventures from skiing to biking, with a flair for arts and culture, but still maintains enough small-town charm for year round residents to call it home. Aspen truly is a unique diamond nestled in the rough of the Rocky Mountains that has a knack for bringing big city features to you in a way that defies ordinary. In the late 1940s, skiing arrived in Aspen as did modern day founders Walter and Elizabeth Paepcke. With a vision for the community that focused on Mind, Body and Spirit, the Paepckes helped Aspen begin a civic and cultural renaissance - one that continues to this day...we call it "The Aspen Idea." Learn more about Aspen's historical past. That idea drives the internal en-

ergy of Aspen. Forget what you think you know about our mountain town, come and experience "The Aspen Idea" for yourself. Enjoy a day on the mountain in the winter or a bike ride along the Rio Grande Trail in the summer, fantastic food, incredible environment, but most of all great people... that's what Aspen is all about.

Crestwood in Snowmass Village is the place to own, and this unit is the one! Unit 3101 in the J building is a corner unit with lots of natural light. The den can easily be converted to a complete third bedroom or enjoy the added living space as is. Wraparound deck adds onto the ample living space and the two fireplaces make this unit a memorable one for rentals and owners. Crestwood J 3101 has

easy access with 10 steps to the front door from the parking area, and the guest registration is located directly below the unit. Rated as excellent/very good by 90% of Trip Advisor reviews, the Crestwood has a long history of exceeding expectations for renters. Located above Base Village with ski access to Fanny and Assay Hills. Convenient location in a full service complex with 24 hour front desk, multiple pools & jacuzzis. Complex shuttle buses will pick you up at the airport. Snowmass ski slopes located just across the street. Two gas fireplaces grace the large living room/ dining room area. Wrap around deck for this corner unit. To learn more visit their website at www.thecrestwood.com

by Donna Conway

FIVER voyage



THE ECLECTIC EAGLE PARK MANSION

There is nothing like it in the world. This 18.5 million dollar oasis is Located minutes from downtown Aspen, an architectural masterpiece, crafted over 3 years, where every detail is a work of art and each room has a story. Famous AD rated architect Horatio Ravazzanni put at the center of the home a 3,250 sq ft glass pyramid "orangerie" inspired by the Louvre Museum in Paris, that bisects a 245 ft long "interior street" offering a journey in time and aesthetic splendor in addition to the physical passage. The living areas are a testament to the visions and harmonious sensibilities of interior designer Steven Sills. French artist Andre Dubreuil masterfully designed the dining room as the aesthetic centerpiece of the home. The art of living extends to the outdoors- a breathtaking hilltop setting with jetliner views, spread over

a 15 acre forest with streams and waterfalls that impart a sense of discovery and wonder. Adjacent is a 10 acre lot that is subdivided, which could be added to the property for a true sense of "compound living".

Eagle Park Mansion sits on 15.14 acres. Housing 14,119 sq ft. 4+ car garage. 25,000+ lbs of glass comprises the greenhouse (Louvre in Paris replica). 13,000 sq ft or 250 tons of stone used for the exterior veneer. 2,000 yards of concrete poured over 1.5 years. 225,000 lbs of iroko wood imported from Ivory Coast in 7 shipping containers, kiln-dried in Colorado over more than 1 year. 15,158 man hours on installation of 77 evergreens and 319 Aspen trees, plus 319 hours of crane time. 350 Eagle Park Drive. This compound is everything your fami-

ly needs to enjoy their winter getaway. Providing a perfect home base for skiing adventures and wilderness exploration. Fully outfitted and furnished all you have to do is right the the check and this mansion will be yours.

This property feature is sponsored by Hilton Hyland Realty. The premium real estate agency has offices internationally. With their main office located in Manhattan on 1375 Broadway, Office 101. The Eagle Park Mansion property is listed by Hilton Hyland Realty, under the broker Iskander Lamseffer. To contact about the listing email Iskander at iskander@hiltonhyland.com. Or call the offices at 310.993.1176.

by Andrew Manner

FIVER realestate

