



LIFTING LAY DOWN AREA EXTENSION TOTAL E&P K6-P NORTH SEA

There are always ways to realize lifting capacity on an offshore platform. Finding the best solution requires experience and skill, Conbit goes the extra mile to obtain the best result for its clients.

In this case, Conbit was contracted to provide the engineering for the lift a lay-down area (LDA) extension onto the north side of Total's K6-P gas production platform.

Total's K6-P gas production platform is located in the Dutch K6 sector of the North Sea, approximately 100 km northwest of Den Helder.

PROJECT

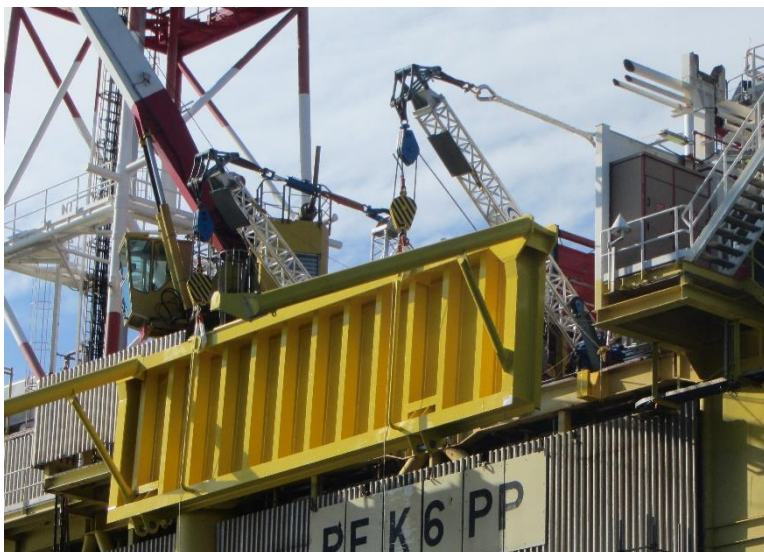
- ✓ ENGINEERING
- ✗ PROCUREMENT
- ✓ INSTALLATION

Client

Fabricom
Total E&P Nederland BV

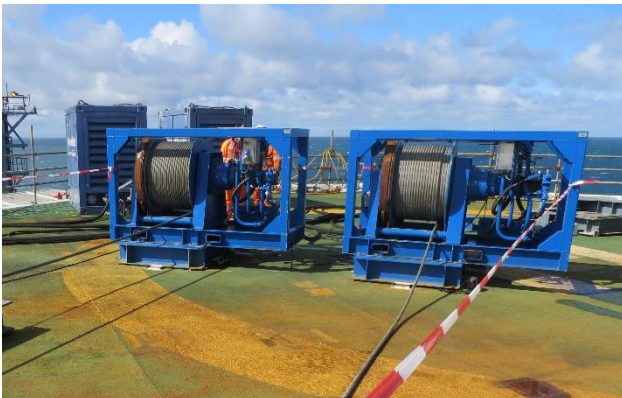
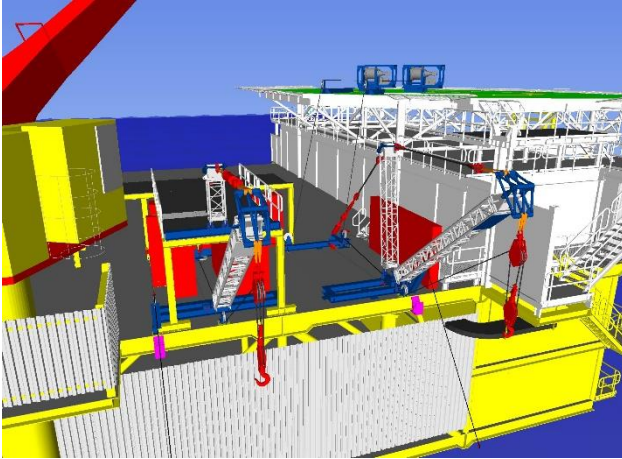
Project Name

Lifting of lay down area
extension



LIFTING LAY DOWN AREA EXTENSION TOTAL E&P K6-P NORTH SEA

01SD007-C



TEMPORARY LIFTING SOLUTION

Because the available deck crane could not be used for this lifting operation, Conbit was asked to provide a solution.

To enable lifting of the LDA extension, weighing 17.5 MT, temporary lifting devices were installed on the platform's main deck.

THE CHALLENGE

The LDA extension had to be lifted directly from the supply vessel in vertical orientation. This posed an extra challenge, because for its installation on the platform the LDA extension needed to be horizontal. The Conbit team of engineers devised a novel concept whereby the LDA extension was lifted in hinges then rotated for its installation onto the north side of the platform. Once the LDA extension was positioned in the hinges, pull cylinders were used to move the lift booms backwards and to rotate the LDA extension into the correct horizontal position.

Conbit was also responsible for the load-out and sea fastening of the LDA extension.

LIFTING EQUIPMENT

Main equipment used for this job:

- Two lifting winches
- Two modular lifting systems
- Power packs
- Two lift lines for the lifting systems
- Mini-crane to install/assemble the lifting system
- Water bag (for load testing)

**"CONBIT DOES NOT AVOID
TO TAKE AN EXTRA STEP
TO GAIN THE BEST
RESULT"**