



OFFSHORE HELIDECK INSTALLATION

Total E&P Nederland BV requested Conbit to provide its lifting expertise to replace the helideck on the F15-A platform.

The F15-A platform is a conventional manned platform, located in the Dutch sector of the North Sea.

The works were completed during a shutdown. Throughout the project, the Seafox 2 was present to provide the necessary accommodation and lifting capacity.

PROJECT

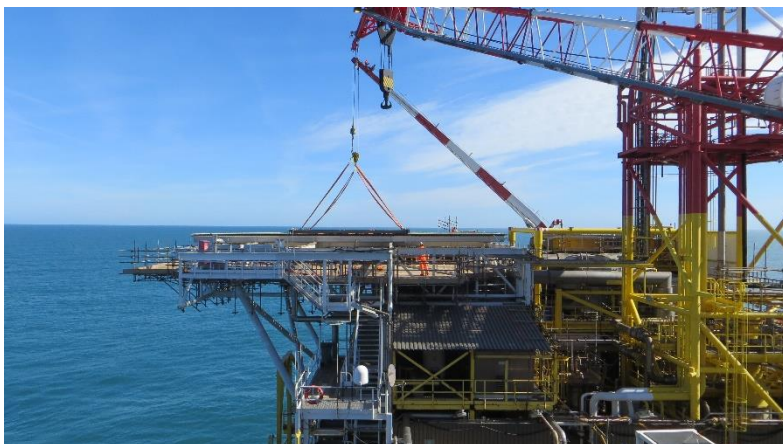
- ✕ ENGINEERING
- ✕ PROCUREMENT
- ✓ INSTALLATION

Client

Total E&P Nederland BV

Project Name

F15-A Helideck Replacement



OFFSHORE HELIDECK INSTALLATION

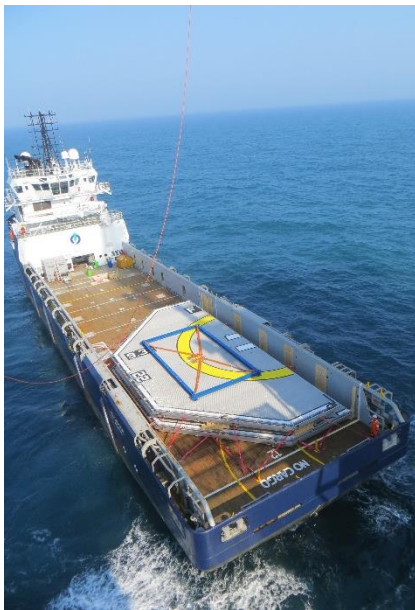
01SD015-C



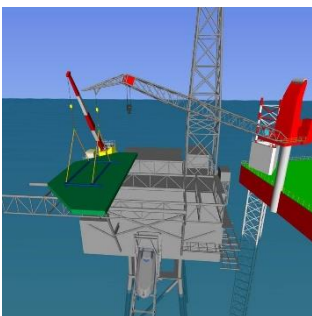
Picture: Load out at Bayards



Picture: Load Test



Picture: The helideck is lifted directly from the supply vessel onto its final position



Picture: The deck crane and the crane of the Seafox 2 make the dual lift coordinated by the Conbit crew



THE PROJECT

Installation of a helideck in an offshore environment is challenging. Wind factors and sea conditions need to be taken into account.

Conbit was involved in every step of the project. The engineers prepared all the lifting plans, detailed drawings and calculations of the lifting frames, assistance during load out at the manufacturer and coordination on board the platform and supply vessel.

DUAL LIFT

The crane on the Seafox 2 does not have sufficient capacity to lift the most distant pancake half. The platform crane was therefore required to provide assistance.

Such a dual lift operation requires good preparation, solid engineering and a competent team on board. Conbit can provide all of these and completed the replacement project safely and successfully

**"LIFTING SPECIALISTS
MAKE THE DIFFERENCE IN
EVERY STEP OF THE
PROJECT"**