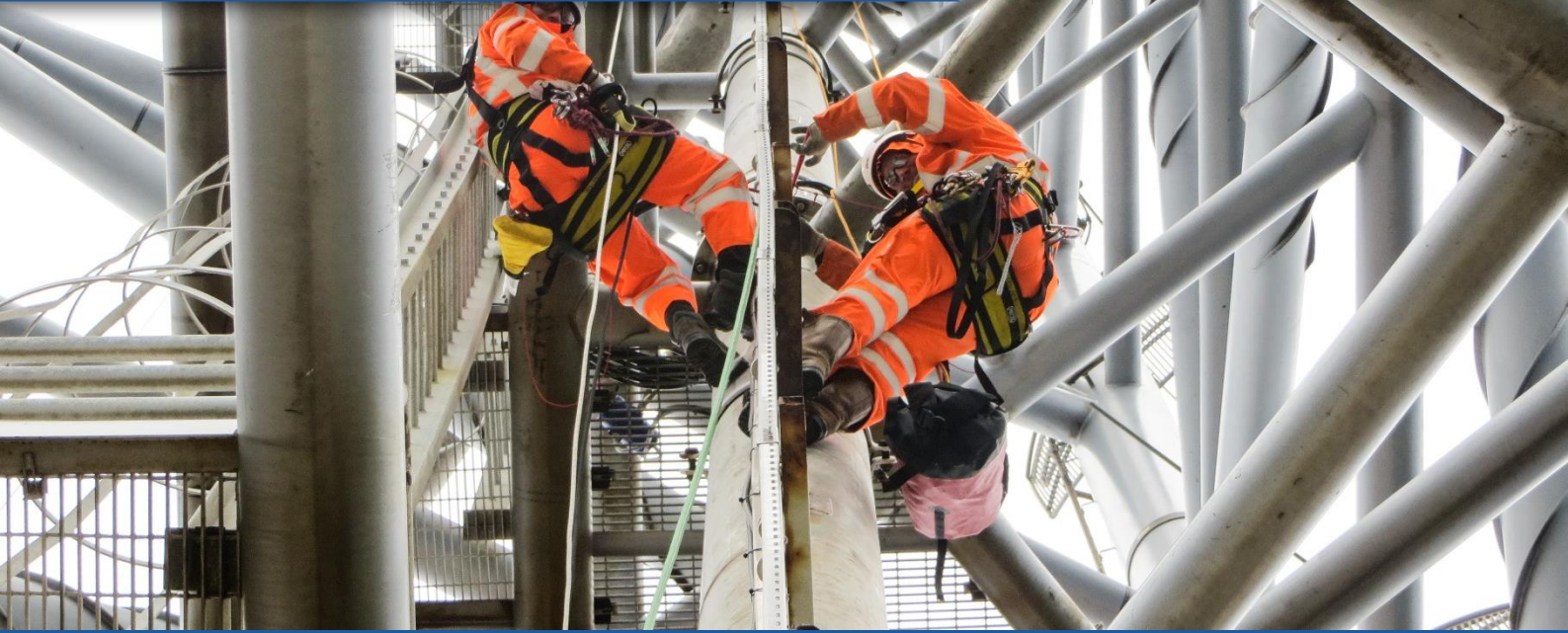


THE POWER OF PREPARATION



OFFSHORE FLARE TIP REPLACEMENT DANA HANZE NORTH SEA

Conbit was awarded the contract to perform maintenance activities on the flare installation of Dana's Hanze platform. Major activities included the replacement of the flare tip and installation of new conduit piping.

The Hanze platform is located in the Dutch continental Shelf of the North Sea.



PROJECT

- ✓ ENGINEERING
- ✗ PROCUREMENT
- ✓ INSTALLATION

Client

Dana Petroleum Netherlands BV

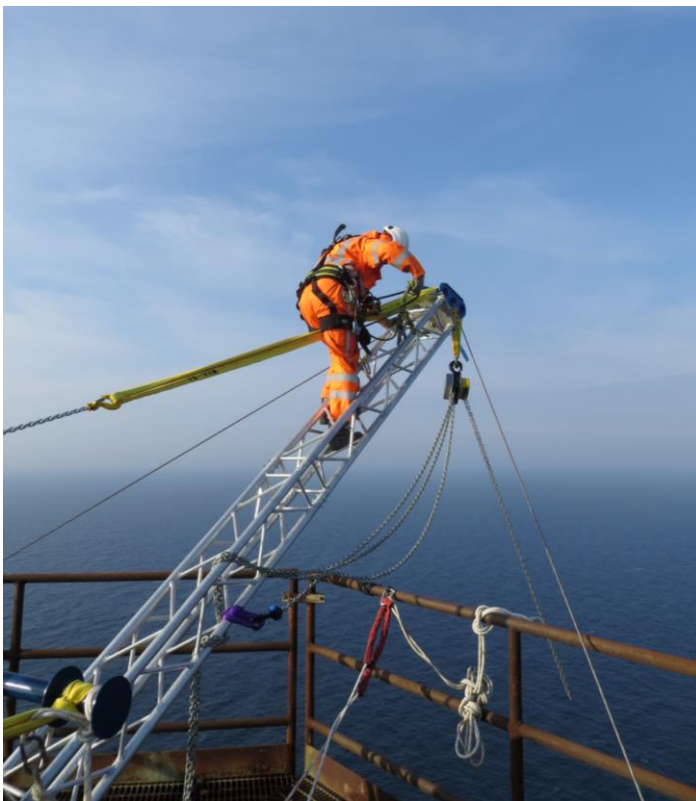
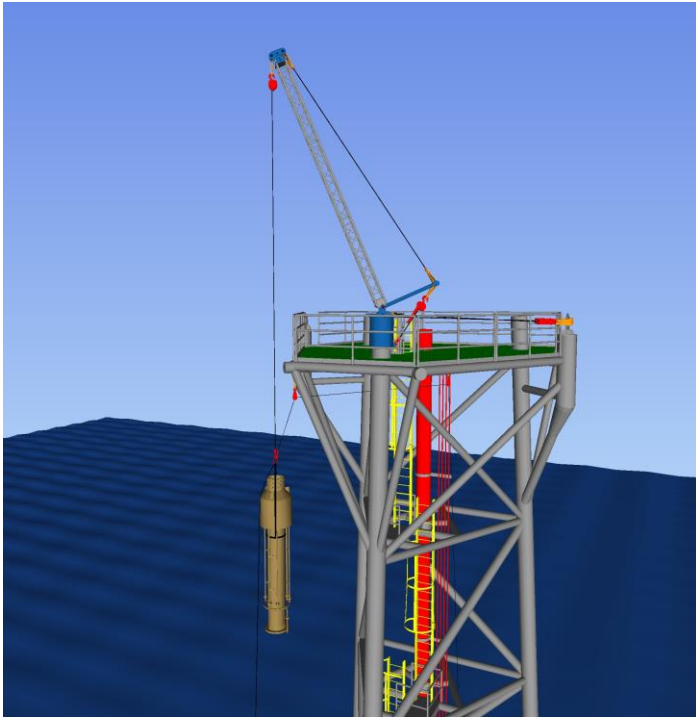
Project Name

Flare tip replacement and associated maintenance



OFFSHORE FLARE TIP REPLACEMENT DANA HANZE NORTH SEA

01SD022-C



PREPARATION AND TESTING

Because flare tip replacement is such a critical activity during a shutdown, the Conbit team is always well prepared and the handling systems are thoroughly tested in advance.

MAIN EQUIPMENT

- Lifting Winch. WLL=1MT
- Aluminum truss components
- Base frame

WEIGHT LOADS

Flare tip: 536kg

EXECUTION

7 Days prior to planned shutdown and 6 days during the shutdown.

MAJOR WORKS

- Replace flare tip
- Replace flare front lines
- Relocate pilot gas line
- Install new ignitor and thermocouple cable
- Install new conduit lines

CUSTOMER

Dana Petroleum PLC bought assets of Petro Canada in 2010, which marked a big increase in production. Since the acquisition Dana operates two platforms in the Dutch Continental Shelf; "Hanze" and "De Ruyter".