

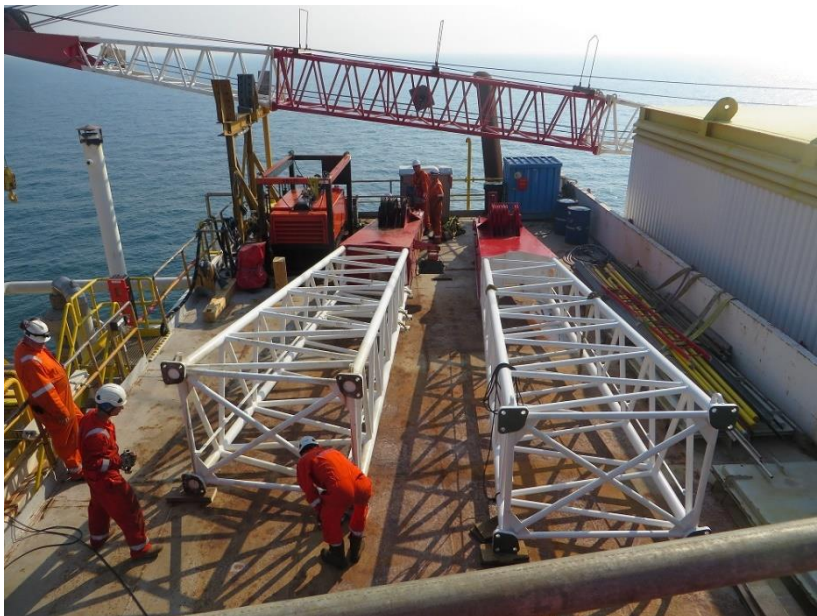
THE POWER OF PREPARATION



OFFSHORE CRANE TIP REPLACEMENT

Total E&P Netherlands BV awarded Conbit the contract to replace the tip of one of their deck cranes on the L7P platform. The scope of work consisted of preparing the method statement, load out assistance, offshore replacement works, bolting and load testing.

The L7P is located in the Dutch Sector of the Northsea.



Picture: Offshore works

PROJECT

- ✕ ENGINEERING
- ✕ PROCUREMENT
- ✓ INSTALLATION

Client

Total E&P Netherlands BV

Project Name

Offshore Deck Crane Replacement



OFFSHORE CRANE TIP REPLACEMENT

01SD045-C



Photo: Seafastened on supply vessel



Photo: Deck crane without crane boom tip



Photo: Lifting configuration attached to the old crane boom tip



Photo: New crane boom tip

PROJECT STEPS

After the load out onto the supply vessel, the following steps were completed:

- Erect load bearing scaffold
- Create access points for bolting and reeving
- NDT Inspection of lifting eyes of existing tip
- Lift the new crane boom tip on the deck of L7P
- Disconnect the existing crane boom tip and lift to the main deck
- Lift new crane boom tip and connect bolts by torquing
- Install lifting and luffing lines
- Commissioning and load testing of the new crane boom

The actual lifting was performed using the platform crane. The platform crane had sufficient reach to lift the L7P6 crane boom tip from the supply vessel onto the deck and from the deck to its final position.

CONBIT CREW

The Conbit crew consisted of a supervisor, riggers with rope access skills and qualified bolting technicians.

“CONBIT IS ABLE TO PROVIDE A TURNKEY INSTALLATION SERVICE, INCLUDING RIGGING, BOLTING, INSPECTION AND WELDING”