

Notes:

1. Description: lightweight energy efficient pre-fabricated exterior wall panel with exterior insulation, continuous air barrier, and multiple metal wall coverings.

2. Building Code Compliance: meets requirements for use on noncombustible construction (Types I-IV). Refer to ICC ESR 1233. IBC 2009, 2012 and 2015

Chapter 7: Fire Resistance Rated Construction
Chapter 16: Structural - Transverse Wind Load Resistance

IECC 2009, 2012 and 2015

Chapter 4: Continuous Air Barrier

IGCC 2012

Chapter 6: Energy Conservation, Efficiency and Atmospheric Quality (Section 606: Building Thermal Envelope insulation and Air Sealing)

Alternative Compliance Path: ASHRAE 189.1-2009

3. Energy Standards Compliance

ASHRAE 90.1 - 2007, 2010, and 2013

Section 5: Continuous Air Barrier

4. Green Building Standards Compliance

ASHRAE 189.1 - 2009

Normative Appendix B: Continuous Air Barrier

5. LEED Eligibility

Eligible contribution towards credits in the following NC (New Construction) categories:

Energy and Atmosphere (EA)

Materials and Resources (MR)

Innovation in Design (ID)

ATTENTION

Sto products are intended for use by qualified professional contractors, not consumers, as a component of a larger construction assembly as specified by a qualified design professional, general contractor or builder. They should be installed in accordance with those specifications and Sto's instructions. Sto Corp. disclaims all, and assumes no, liability for on-site inspections, for its products applied improperly, or by unqualified persons or entities, or as part of an improperly designed or constructed building, for the nonperformance of adjacent building components or assemblies, or for other construction activities beyond Sto's control. Improper use of Sto products or use as part of an improperly designed or constructed larger assembly or building may result in serious damage to Sto products, and to the structure of the building or its components.

STO CORP. DISCLAIMS ALL WARRANTIES EXPRESSED OR IMPLIED EXCEPT FOR EXPLICIT LIMITED WRITTEN WARRANTIES ISSUED TO AND ACCEPTED BY BUILDING OWNERS IN ACCORDANCE WITH STO'S WARRANTY PROGRAMS WHICH ARE SUBJECT TO CHANGE FROM TIME TO TIME. For the fullest, most current information on proper application, clean-up, mixing and other specifications and warranties, cautions and disclaimers, please refer to the Sto Corp. website, www.stocorp.com.

PROJECT:

ARCHITECTS:

CONSTRUCTION MGR.:

TITLE:

SCALE:

DATE:

REVISION:

PROJ.N°:

DWG N°:

Notes:

1. Description: lightweight energy efficient pre-fabricated exterior wall panel with exterior insulation, continuous air barrier, and integral decorative and protective finish options

2. Building Code Compliance: meets requirements of NFPA 285 and NFPA 268 for use on noncombustible construction (Types I-IV). Refer to ICC ESR 1233 and HAI Project No. 1JB05184.001.

IBC 2009, 2012 and 2015

Chapter 7: Fire Resistance Rated Construction
Chapter 16: Structural - Transverse Wind Load Resistance

Chapter 26: Types I-IV (noncombustible)
Construction, Ignition Resistance, Surface Burning Characteristics

IECC 2009, 2012 and 2015

Chapter 4: Continuous Air Barrier

IGCC 2012

Chapter 6: Energy Conservation, Efficiency and Atmospheric Quality (Section 606: Building Thermal Envelope insulation and Air Sealing)

Alternative Compliance Path: ASHRAE 189.1-2009

3. Energy Standards Compliance

ASHRAE 90.1 - 2007, 2010 and 2013

Section 5: Continuous Air Barrier

4. Green Building Standards Compliance

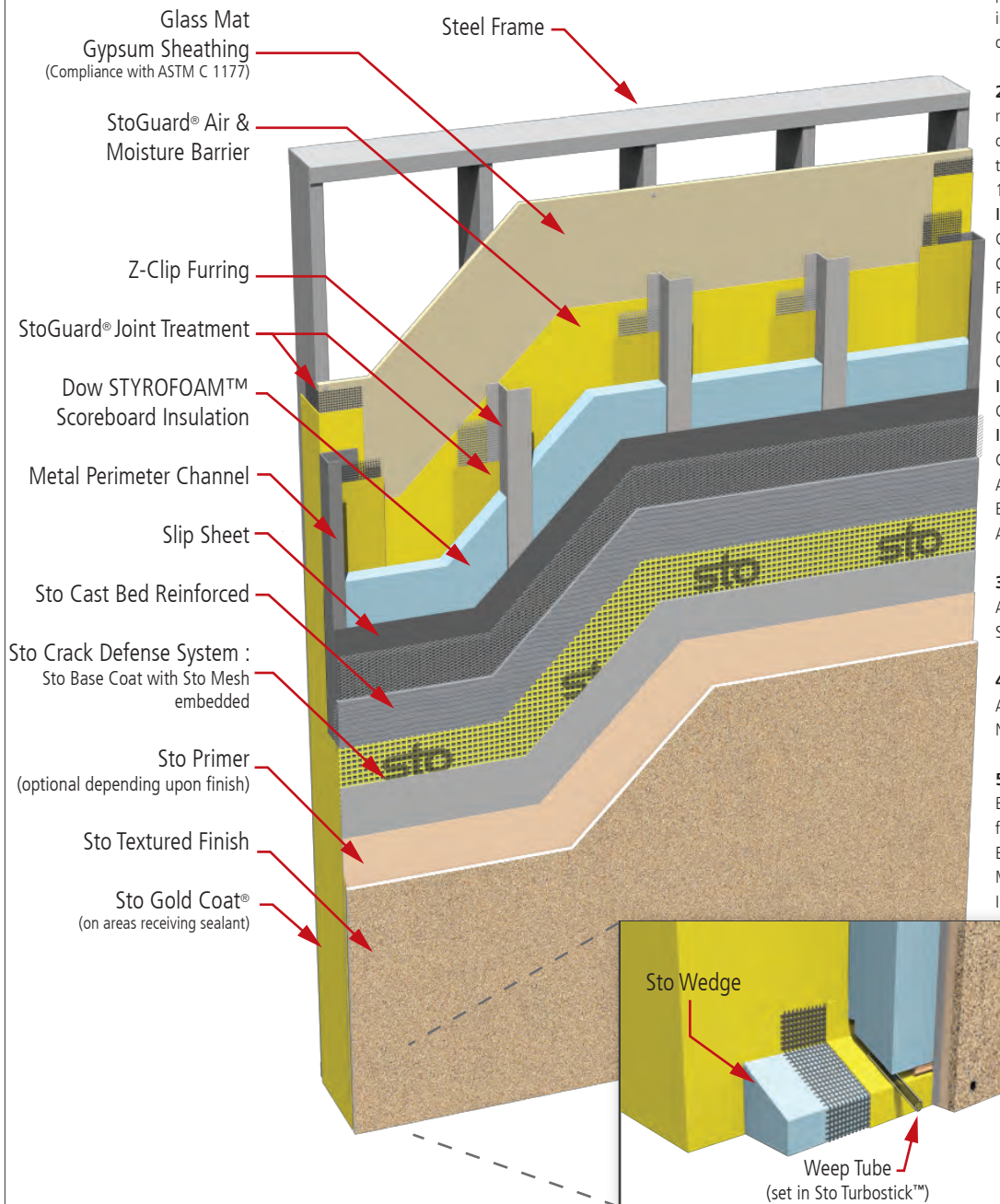
ASHRAE 189.1 - 2009

Normative Appendix B: Continuous Air Barrier

5. LEED Eligibility

Eligible contribution towards credits in the following NC (New Construction) categories:

Energy and Atmosphere (EA)
Materials and Resources (MR)
Innovation in Design (ID)



ATTENTION

Sto products are intended for use by qualified professional contractors, not consumers, as a component of a larger construction assembly as specified by a qualified design professional, general contractor or builder. They should be installed in accordance with those specifications and Sto's instructions. Sto Corp. disclaims all, and assumes no, liability for on-site inspections, for its products applied improperly, or by unqualified persons or entities, or as part of an improperly designed or constructed building, for the nonperformance of adjacent building components or assemblies, or for other construction activities beyond Sto's control. Improper use of Sto products or use as part of an improperly designed or constructed larger assembly or building may result in serious damage to Sto products, and to the structure of the building or its components.

STO CORP. DISCLAIMS ALL WARRANTIES EXPRESSED OR IMPLIED EXCEPT FOR EXPLICIT LIMITED WRITTEN WARRANTIES ISSUED TO AND ACCEPTED BY BUILDING OWNERS IN ACCORDANCE WITH STO'S WARRANTY PROGRAMS WHICH ARE SUBJECT TO CHANGE FROM TIME TO TIME. For the fullest, most current information on proper application, clean-up, mixing and other specifications and warranties, cautions and disclaimers, please refer to the Sto Corp. website, www.stocorp.com.

sto panelTM

Sto Panel Technology

3800 Camp Creek Parkway
Building 1400, Suite 120
Atlanta, Georgia 30331
Phone: (888) 227-8334 Fax: (856) 690-0100
www.stopanel.com

PROJECT:

ARCHITECTS:

CONSTRUCTION MGR.:

TITLE:

SCALE:

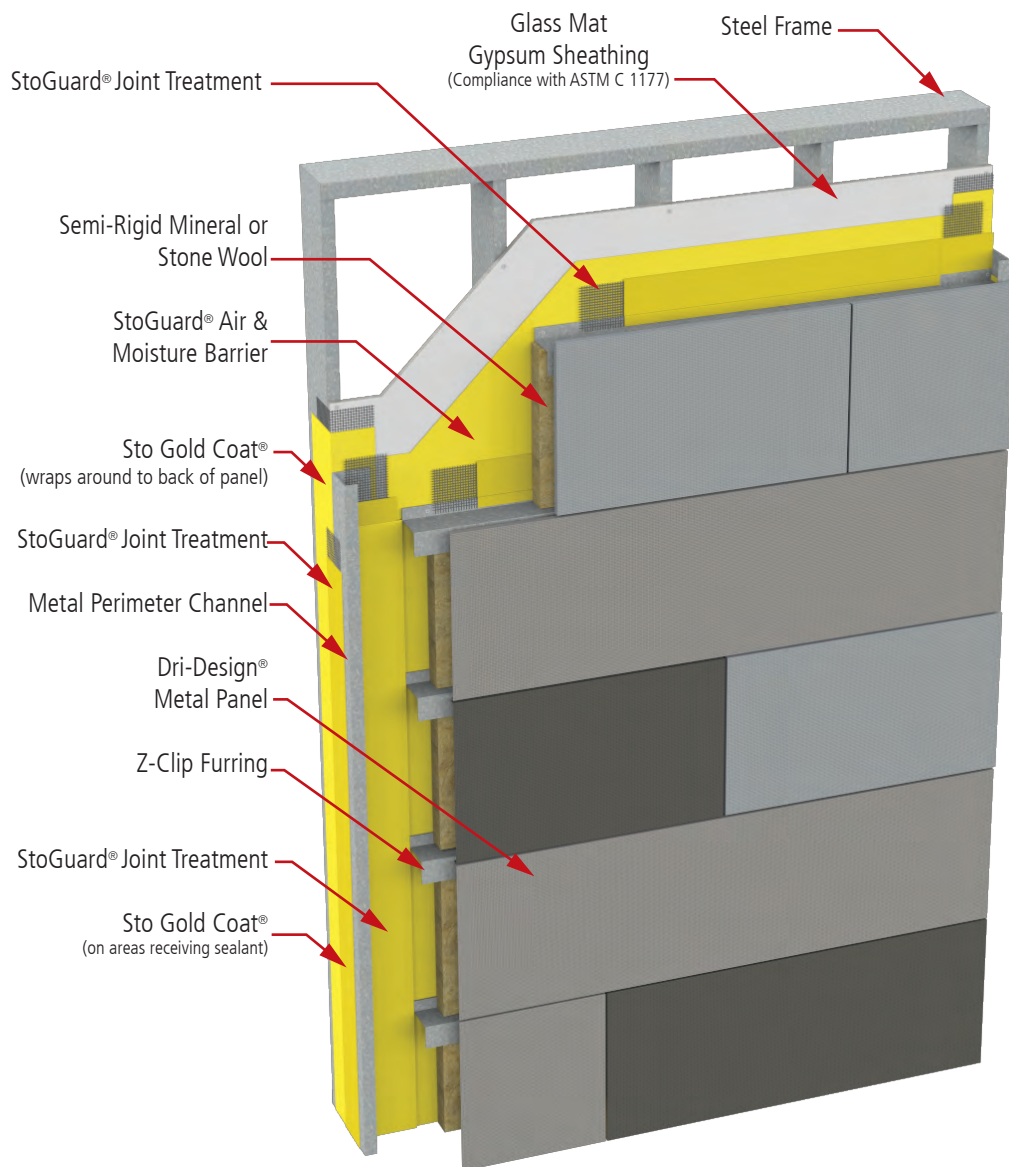
DATE:

REVISION:

PROJ.N°:

DWG N°:

sto[®]panel[™] Dri-Design[®] ci



Notes:

1. Description: lightweight energy efficient pre-fabricated exterior wall panel with exterior insulation, continuous air barrier, and multiple metal wall coverings.

2. Building Code Compliance: meets requirements for use on noncombustible construction (Types I-IV). Refer to ICC ESR 1233. **IBC 2009, 2012 and 2015**

Chapter 7: Fire Resistance Rated Construction
Chapter 16: Structural - Transverse Wind Load Resistance

IECC 2009, 2012 and 2015

Chapter 4: Continuous Air Barrier

IGCC 2012

Chapter 6: Energy Conservation, Efficiency and Atmospheric Quality (Section 606: Building Thermal Envelope insulation and Air Sealing)

Alternative Compliance Path: ASHRAE 189.1-2009

3. Energy Standards Compliance

ASHRAE 90.1 - 2007, 2010, and 2013

Section 5: Continuous Air Barrier

4. Green Building Standards Compliance

ASHRAE 189.1 - 2009

Normative Appendix B: Continuous Air Barrier

5. LEED Eligibility

Eligible contribution towards credits in the following NC (New Construction) categories:

Energy and Atmosphere (EA)

Materials and Resources (MR)

Innovation in Design (ID)

ATTENTION

Sto products are intended for use by qualified professional contractors, not consumers, as a component of a larger construction assembly as specified by a qualified design professional, general contractor or builder. They should be installed in accordance with those specifications and Sto's instructions. Sto Corp. disclaims all, and assumes no, liability for on-site inspections, for its products applied improperly, or by unqualified persons or entities, or as part of an improperly designed or constructed building, for the nonperformance of adjacent building components or assemblies, or for other construction activities beyond Sto's control. Improper use of Sto products or use as part of an improperly designed or constructed larger assembly or building may result in serious damage to Sto products, and to the structure of the building or its components.

STO CORP. DISCLAIMS ALL WARRANTIES EXPRESSED OR IMPLIED EXCEPT FOR EXPLICIT LIMITED WRITTEN WARRANTIES ISSUED TO AND ACCEPTED BY BUILDING OWNERS IN ACCORDANCE WITH STO'S WARRANTY PROGRAMS WHICH ARE SUBJECT TO CHANGE FROM TIME TO TIME. For the fullest, most current information on proper application, clean-up, mixing and other specifications and warranties, cautions and disclaimers, please refer to the Sto Corp. website, www.stocorp.com.

sto[®]panel[™]

Sto Panel Technology

3800 Camp Creek Parkway

Building 1400, Suite 120

Atlanta, Georgia 30331

Phone: (888) 227-8334 Fax: (856) 690-0100

www.stopanel.com



P.O. Box 1286

Holland, Michigan 49422

Phone: (616) 355-2970

Fax: (616) 355-2972

www.dri-design.com

PROJECT:

ARCHITECTS:

CONSTRUCTION MGR.:

TITLE:

SCALE:

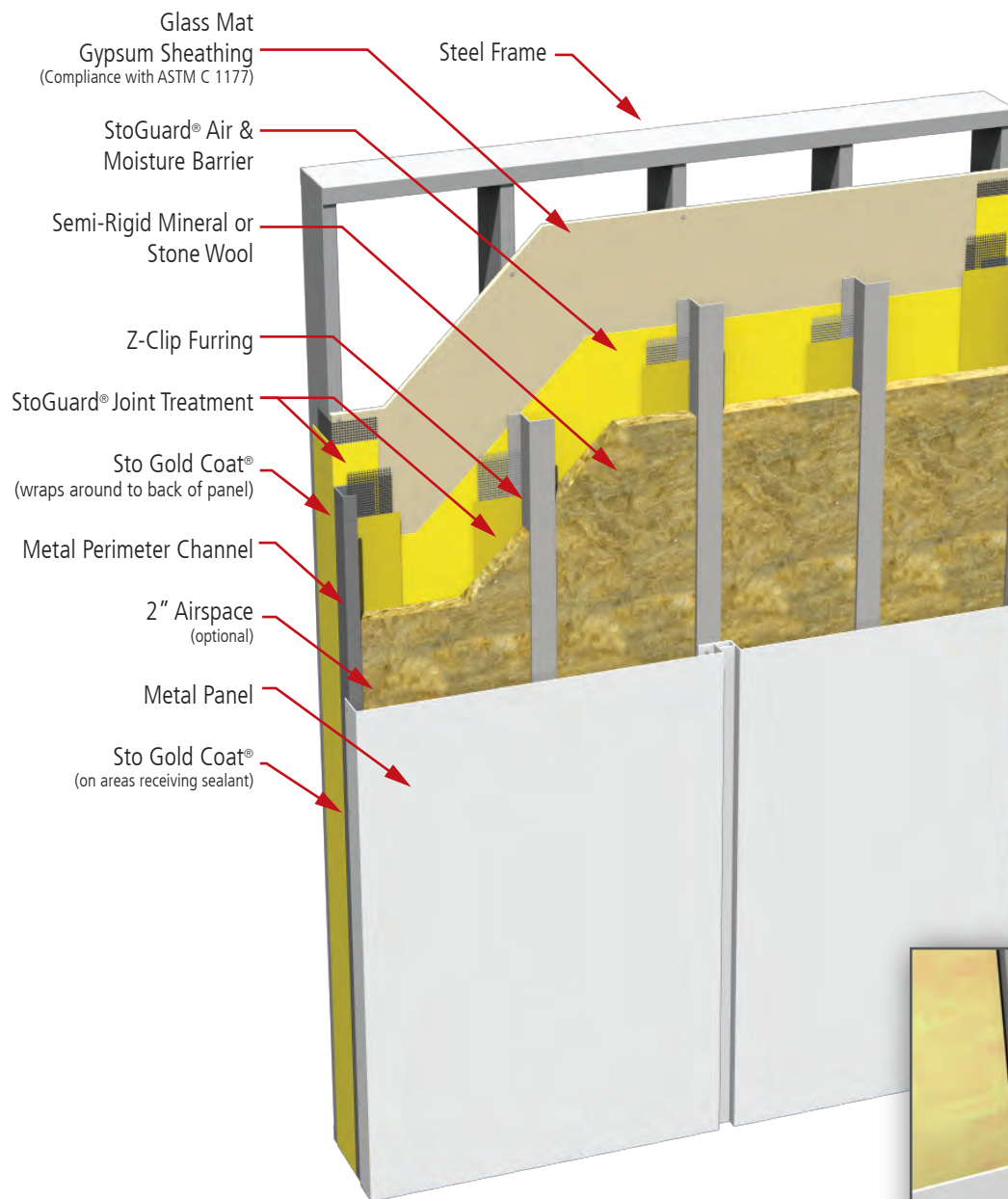
DATE:

REVISION:

PROJ.N°:

DWG N°:

sto panelTM Metal ci



Notes:

1. Description: lightweight energy efficient pre-fabricated exterior wall panel with exterior insulation, continuous air barrier, and multiple metal wall covering options.

2. Building Code Compliance: meets requirements for use on noncombustible construction (Types I-IV). Refer to ICC ESR 1233. IBC 2009, 2012 and 2015

Chapter 7: Fire Resistance Rated Construction
Chapter 16: Structural - Transverse Wind Load Resistance

IECC 2009, 2012 and 2015

Chapter 4: Continuous Air Barrier

IGCC 2012

Chapter 6: Energy Conservation, Efficiency and Atmospheric Quality (Section 606: Building Thermal Envelope insulation and Air Sealing)

Alternative Compliance Path: ASHRAE 189.1-2009

3. Energy Standards Compliance

ASHRAE 90.1 - 2007, 2010, and 2013

Section 5: Continuous Air Barrier

4. Green Building Standards Compliance

ASHRAE 189.1 - 2009

Normative Appendix B: Continuous Air Barrier

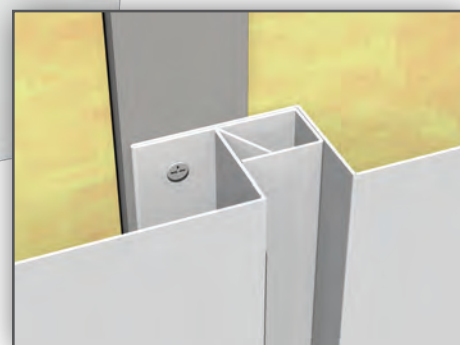
5. LEED Eligibility

Eligible contribution towards credits in the following NC (New Construction) categories:

Energy and Atmosphere (EA)

Materials and Resources (MR)

Innovation in Design (ID)



ATTENTION

Sto products are intended for use by qualified professional contractors, not consumers, as a component of a larger construction assembly as specified by a qualified design professional, general contractor or builder. They should be installed in accordance with those specifications and Sto's instructions. Sto Corp. disclaims all, and assumes no, liability for on-site inspections, for its products applied improperly, or by unqualified persons or entities, or as part of an improperly designed or constructed building, for the nonperformance of adjacent building components or assemblies, of for other construction activities beyond Sto's control. Improper use of Sto products or use as part of an improperly designed or constructed larger assembly or building may result in serious damage to Sto products, and to the structure of the building or its components.

STO CORP. DISCLAIMS ALL WARRANTIES EXPRESSED OR IMPLIED EXCEPT FOR EXPLICIT LIMITED WRITTEN WARRANTIES ISSUED TO AND ACCEPTED BY BUILDING OWNERS IN ACCORDANCE WITH STO'S WARRANTY PROGRAMS WHICH ARE SUBJECT TO CHANGE FROM TIME TO TIME. For the fullest, most current information on proper application, clean-up, mixing and other specifications and warranties, cautions and disclaimers, please refer to the Sto Corp. website, www.stocorp.com.

sto panelTM

Sto Panel Technology

3800 Camp Creek Parkway

Building 1400, Suite 120

Atlanta, Georgia 30331

Phone: (888) 227-8334 Fax: (856) 690-0100

www.stopanel.com

PROJECT:

ARCHITECTS:

CONSTRUCTION MGR.:

TITLE:

SCALE:

DATE:

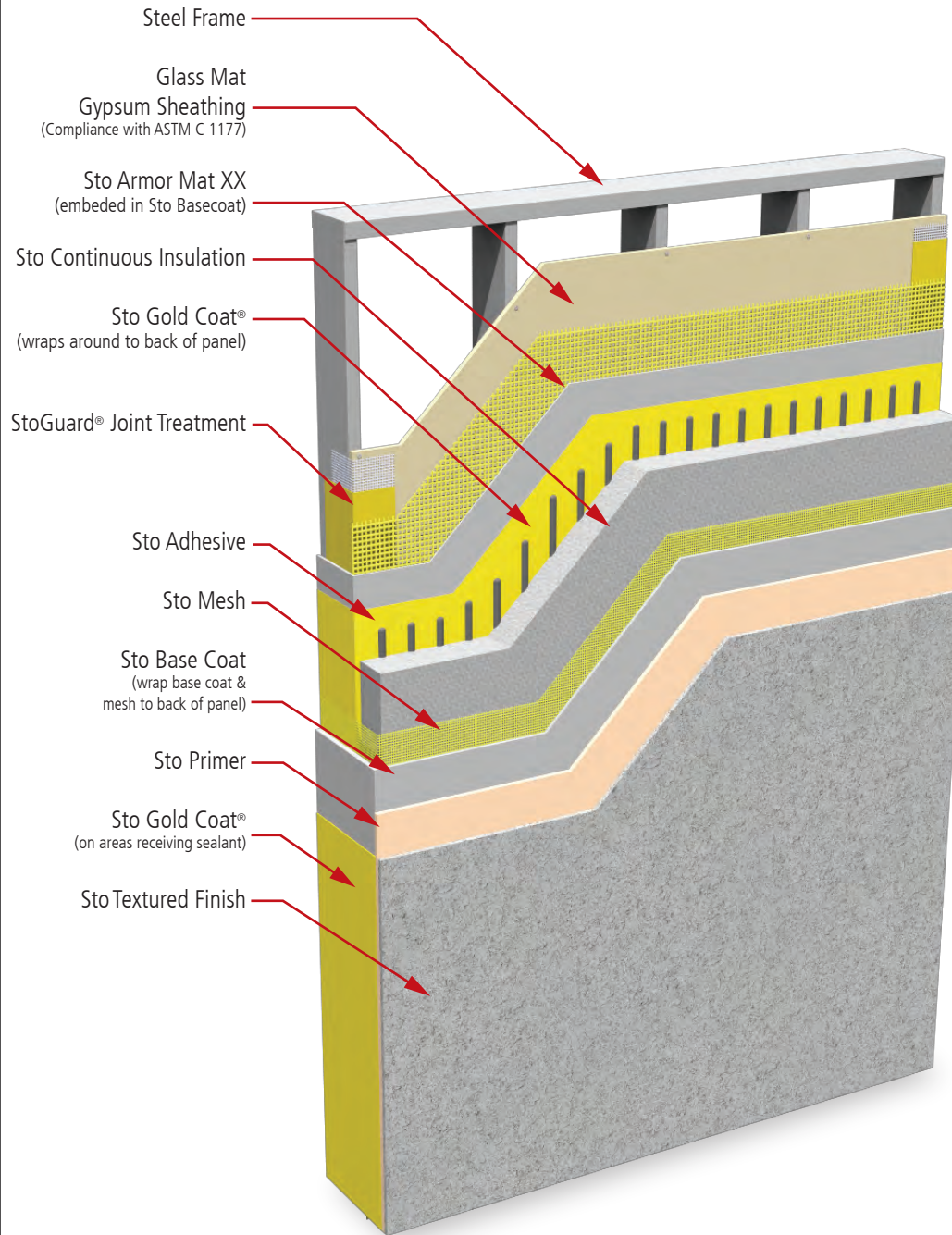
REVISION:

PROJ.N°:

DWG.N°:

sto panel Impact ci

U.S. Patent No.8,919,062 B1



ATTENTION

Sto products are intended for use by qualified professional contractors, not consumers, as a component of a larger construction assembly as specified by a qualified design professional, general contractor or builder. They should be installed in accordance with those specifications and Sto's instructions. Sto Corp. disclaims all, and assumes no, liability for on-site inspections, for its products applied improperly, or by unqualified persons or entities, or as part of an improperly designed or constructed building, for the nonperformance of adjacent building components or assemblies, or for other construction activities beyond Sto's control. Improper use of Sto products or use as part of an improperly designed or constructed larger assembly or building may result in serious damage to Sto products, and to the structure of the building or its components.

STO CORP. DISCLAIMS ALL WARRANTIES EXPRESSED OR IMPLIED EXCEPT FOR EXPLICIT LIMITED WRITTEN WARRANTIES ISSUED TO AND ACCEPTED BY BUILDING OWNERS IN ACCORDANCE WITH STO'S WARRANTY PROGRAMS WHICH ARE SUBJECT TO CHANGE FROM TIME TO TIME. For the fullest, most current information on proper application, clean-up, mixing and other specifications and warranties, cautions and disclaimers, please refer to the Sto Corp. website, www.stocorp.com.

sto panel™

Sto Panel Technology

3800 Camp Creek Parkway
Building 1400, Suite 120
Atlanta, Georgia 30331
Phone: (888) 227-8334 Fax: (856) 690-0100
www.stopanel.com

PROJECT:

ARCHITECTS:

CONSTRUCTION MGR.:

TITLE:

SCALE:

DATE:

REVISION:

PROJ.Nº:

DWG Nº:

Notes:

1. Description: lightweight, hurricane impact resistant, energy efficient pre-fabricated exterior wall panel with continuous insulation, continuous air barrier, and integral decorative and protective finish.

2. Building Code Compliance: meets requirements of NFPA 285 and NFPA 268 for use on noncombustible construction (Types I-IV). Refer to ICC ESR 1748.

IBC 2009, 2012 and 2015

Chapter 7: Fire Resistance Rated Construction

Chapter 14: Exterior Insulation and Finish Systems, Weather Resistance

Chapter 16: Structural - Transverse Wind Load Resistance

Chapter 17: Special Inspections, Types I-IV

(noncombustible) Construction

Chapter 26: Types I-IV (noncombustible) Construction, Ignition Resistance, Surface Burning Characteristics

IECC 2009, 2012 and 2015

Chapter 4: Continuous Insulation (ci) over Metal Frame Walls - All Climate Zones (with sufficient ci thickness)

Chapter 4: Continuous Air Barrier

IGCC 2012

Chapter 6: Energy Conservation, Efficiency and Atmospheric Quality (Section 606: Building Thermal Envelope insulation and Air Sealing)

Alternative Compliance Path: ASHRAE 189.1-2009

3. Energy Standards Compliance

ASHRAE 90.1 - 2007, 2010 and 2013

Section 5: Building Envelope Continuous Insulation (ci) over Metal Frame Walls - All Climate Zones (with sufficient ci thickness)

Section 5: Continuous Air Barrier

4. Green Building Standards Compliance

ASHRAE 189.1 - 2009

Normative Appendix A: Building Envelope Continuous Insulation (ci) over Metal Frame Walls - All Climate Zones (with sufficient ci thickness)

Normative Appendix B: Continuous Air Barrier

5. LEED Eligibility

Eligible contribution towards credits in the following NC (New Construction) categories:

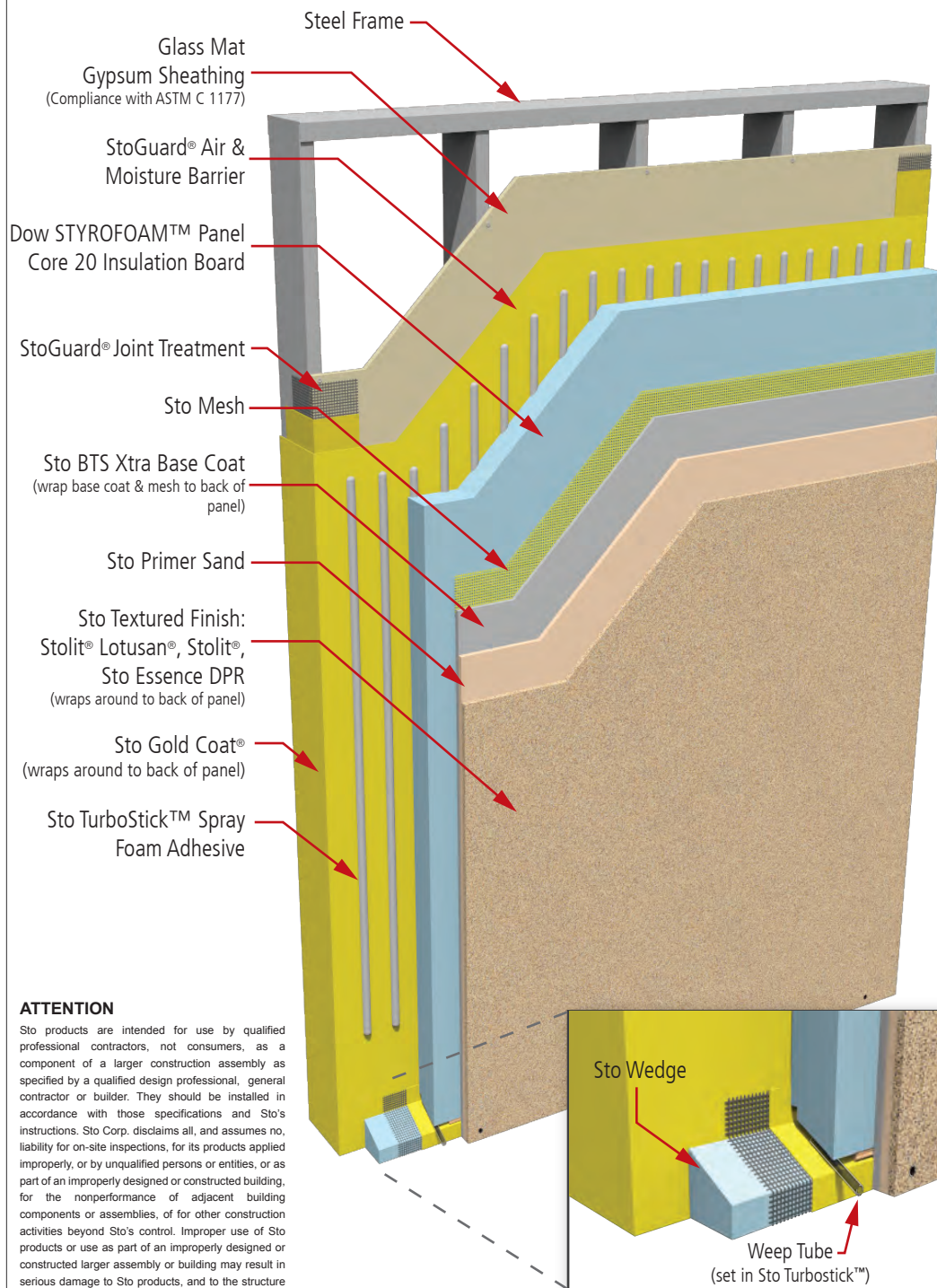
Energy and Atmosphere (EA)

Materials and Resources (MR)

Innovation in Design (ID)

6. Hurricane Impact Resistance

Capable of meeting Florida High Velocity Hurricane Zone (HVHZ) large and small missile impact resistance per Florida Building Code protocols TAS-201, TAS 202, and TAS 203. (Refer to StoPanel Hurricane Impact Resistant Systems addendum for current approved assemblies and NOA numbers)



ATTENTION

Sto products are intended for use by qualified professional contractors, not consumers, as a component of a larger construction assembly as specified by a qualified design professional, general contractor or builder. They should be installed in accordance with those specifications and Sto's instructions. Sto Corp. disclaims all, and assumes no, liability for on-site inspections, for its products applied improperly, or by unqualified persons or entities, or as part of an improperly designed or constructed building, for the nonperformance of adjacent building components or assemblies, or for other construction activities beyond Sto's control. Improper use of Sto products or use as part of an improperly designed or constructed larger assembly or building may result in serious damage to Sto products, and to the structure of the building or its components.

STO CORP. DISCLAIMS ALL WARRANTIES EXPRESSED OR IMPLIED EXCEPT FOR EXPLICIT LIMITED WRITTEN WARRANTIES ISSUED TO AND ACCEPTED BY BUILDING OWNERS IN ACCORDANCE WITH STO'S WARRANTY PROGRAMS WHICH ARE SUBJECT TO CHANGE FROM TIME TO TIME. For the fullest, most current information on proper application, clean-up, mixing and other specifications and warranties, cautions and disclaimers, please refer to the Sto Corp. website, www.stocorp.com.

Notes:

1. Description: lightweight energy efficient pre-fabricated exterior wall panel with continuous insulation, continuous air barrier, and integral decorative and protective finish options

2. Building Code Compliance: meets requirements of NFPA 285 and NFPA 268 for use on noncombustible construction (Types I-IV). Refer to ICC ESR 1748.

IBC 2009, 2012 and 2015

Chapter 7: Fire Resistance Rated Construction
Chapter 14: Exterior Insulation and Finish Systems, Weather Resistance

Chapter 16: Structural - Transverse Wind Load Resistance

Chapter 17: Special Inspections, Types I-IV (noncombustible) Construction

Chapter 26: Types I-IV (noncombustible) Construction, Ignition Resistance, Surface Burning Characteristics

IECC 2009, 2012 and 2015

Chapter 4: Continuous Insulation (ci) over Metal Frame Walls - All Climate Zones (with sufficient ci thickness)

Chapter 4: Continuous Air Barrier

IGCC 2012

Chapter 6: Energy Conservation, Efficiency and Atmospheric Quality (Section 606: Building Thermal Envelope insulation and Air Sealing)

Alternative Compliance Path: ASHRAE 189.1-2009

3. Energy Standards Compliance

ASHRAE 90.1 - 2007, 2010 and 2013

Section 5: Building Envelope Continuous Insulation (ci) over Metal Frame Walls - All Climate Zones (with sufficient ci thickness)

Section 5: Continuous Air Barrier

4. Green Building Standards Compliance

ASHRAE 189.1 - 2009

Normative Appendix A: Building Envelope Continuous Insulation (ci) over Metal Frame Walls - All Climate Zones (with sufficient ci thickness)

Normative Appendix B: Continuous Air Barrier

5. LEED Eligibility

Eligible contribution towards credits in the following NC (New Construction) categories:

Energy and Atmosphere (EA)
Materials and Resources (MR)
Innovation in Design (ID)

sto panel™

Sto Panel Technology

3800 Camp Creek Parkway

Building 1400, Suite 120

Atlanta, Georgia 30331

Phone: (888) 227-8334 Fax: (856) 690-0100

www.stopanel.com

PROJECT:

ARCHITECTS:

CONSTRUCTION MGR.:

TITLE:

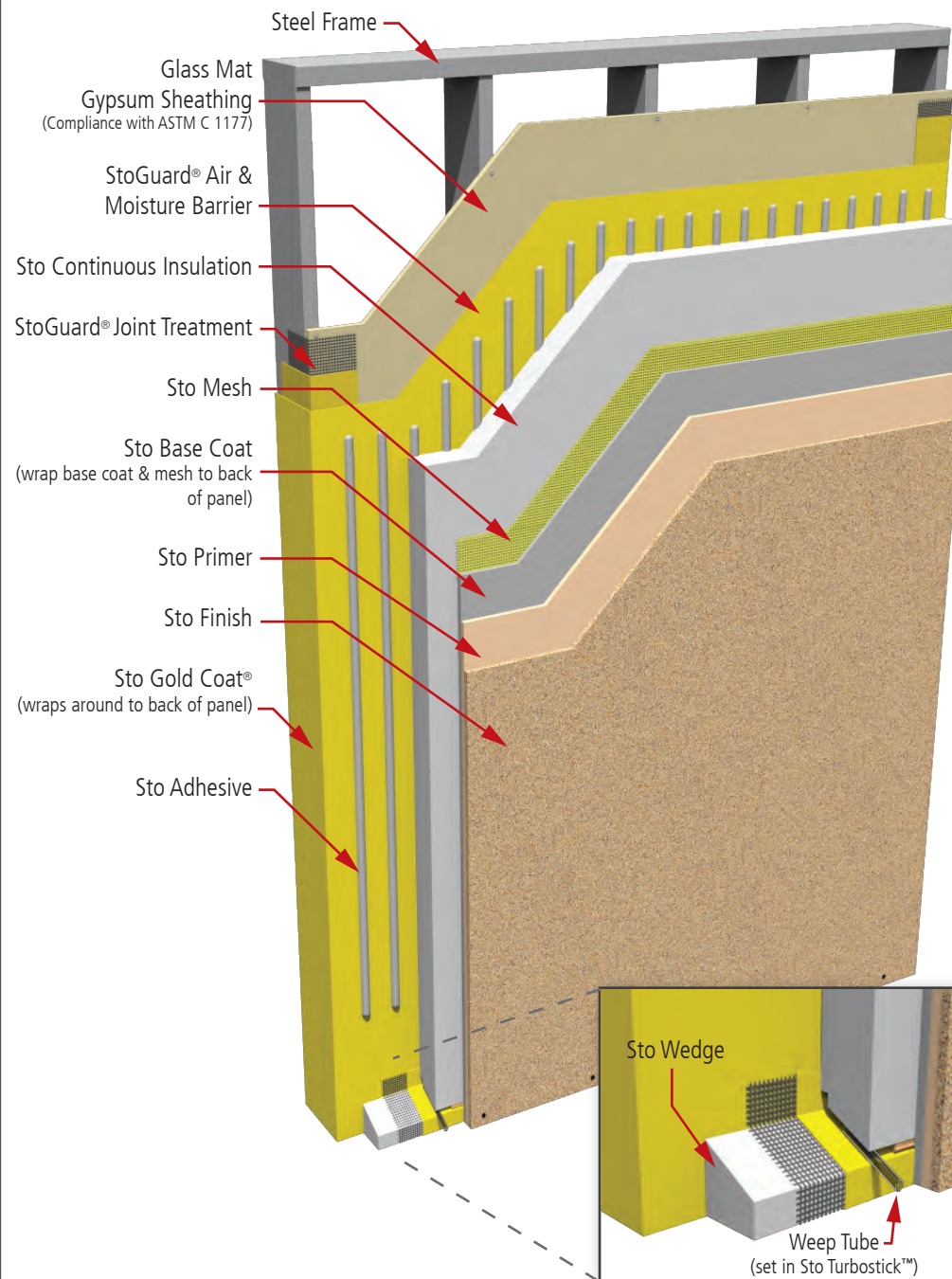
SCALE:

DATE:

REVISION:

PROJ.N°:

DWG N°:



Notes:

1. Description: lightweight energy efficient pre-fabricated exterior wall panel with continuous insulation, continuous air barrier, and integral decorative and protective finish options

2. Building Code Compliance: meets requirements of NFPA 285 and NFPA 268 for use on noncombustible construction (Types I-IV). Refer to ICC ESR 1748.

IBC 2009, 2012 and 2015

Chapter 7: Fire Resistance Rated Construction
Chapter 14: Exterior Insulation and Finish Systems, Weather Resistance

Chapter 16: Structural - Transverse Wind Load Resistance

Chapter 17: Special Inspections, Types I-IV (noncombustible) Construction

Chapter 26: Types I-IV (noncombustible) Construction, Ignition Resistance, Surface Burning Characteristics

IECC 2009, 2012 and 2015

Chapter 4: Continuous Insulation (ci) over Metal Frame Walls - All Climate Zones (with sufficient ci thickness)

Chapter 4: Continuous Air Barrier

IGCC 2012

Chapter 6: Energy Conservation, Efficiency and Atmospheric Quality (Section 606: Building Thermal Envelope insulation and Air Sealing)

Alternative Compliance Path: ASHRAE 189.1-2009

3. Energy Standards Compliance

ASHRAE 90.1 - 2007, 2010 and 2013

Section 5: Building Envelope Continuous Insulation (ci) over Metal Frame Walls - All Climate Zones (with sufficient ci thickness)

Section 5: Continuous Air Barrier

4. Green Building Standards Compliance

ASHRAE 189.1 - 2009

Normative Appendix A: Building Envelope Continuous Insulation (ci) over Metal Frame Walls - All Climate Zones (with sufficient ci thickness)
Normative Appendix B: Continuous Air Barrier

5. LEED Eligibility

Eligible contribution towards credits in the following NC (New Construction) categories:
Energy and Atmosphere (EA)
Materials and Resources (MR)
Innovation in Design (ID)

ATTENTION

Sto products are intended for use by qualified professional contractors, not consumers, as a component of a larger construction assembly as specified by a qualified design professional, general contractor or builder. They should be installed in accordance with those specifications and Sto's instructions. Sto Corp. disclaims all, and assumes no, liability for on-site inspections, for its products applied improperly, or by unqualified persons or entities, or as part of an improperly designed or constructed building, for the nonperformance of adjacent building components or assemblies, of for other construction activities beyond Sto's control. Improper use of Sto products or use as part of an improperly designed or constructed larger assembly or building may result in serious damage to Sto products, and to the structure of the building or its components.

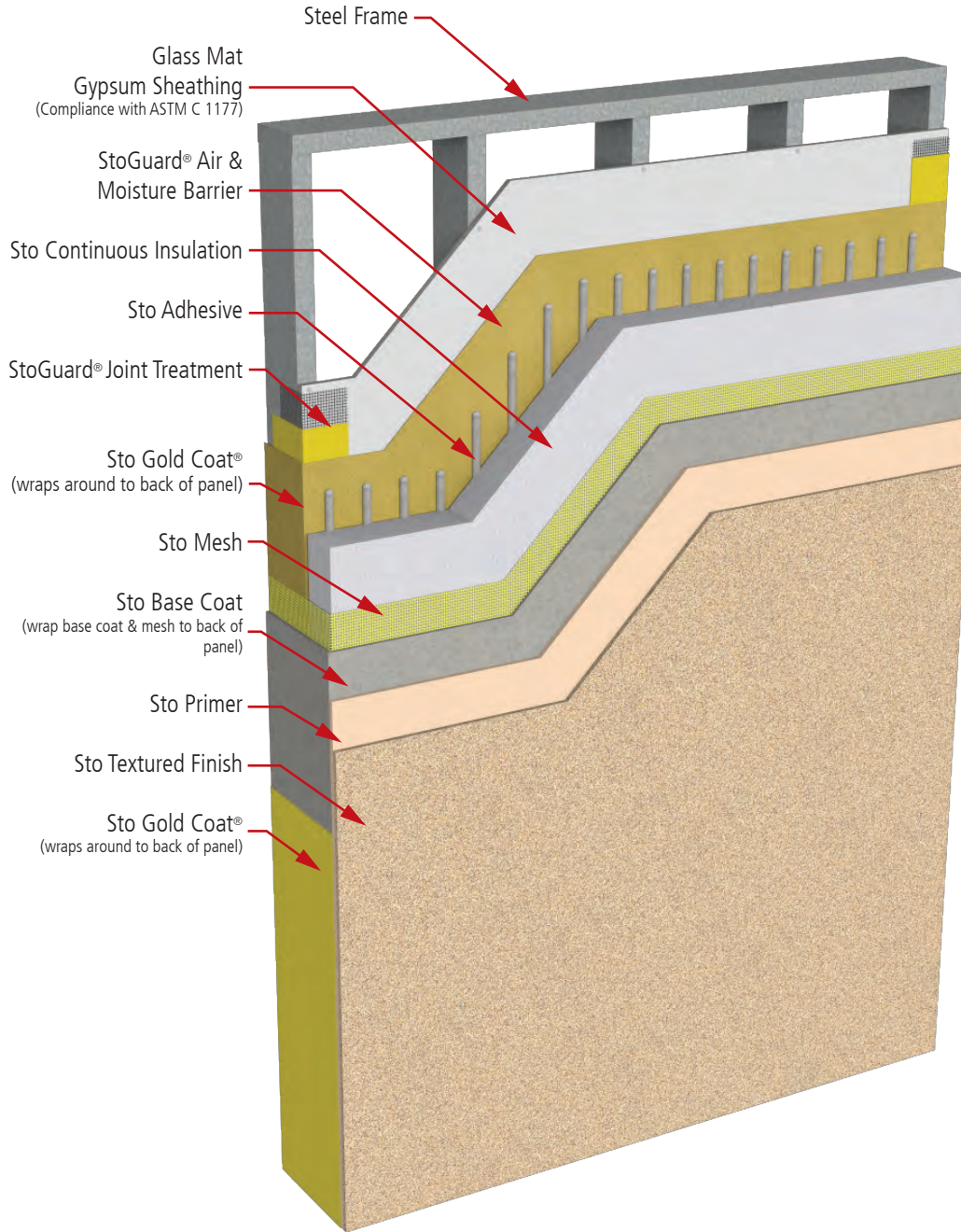
STO CORP. DISCLAIMS ALL WARRANTIES EXPRESSED OR IMPLIED EXCEPT FOR EXPLICIT LIMITED WRITTEN WARRANTIES ISSUED TO AND ACCEPTED BY BUILDING OWNERS IN ACCORDANCE WITH STO'S WARRANTY PROGRAMS WHICH ARE SUBJECT TO CHANGE FROM TIME TO TIME. For the fullest, most current information on proper application, clean-up, mixing and other specifications and warranties, cautions and disclaimers, please refer to the Sto Corp. website, www.stocorp.com.

sto panel™
Sto Panel Technology

3800 Camp Creek Parkway
Building 1400, Suite 120
Atlanta, Georgia 30331
Phone: (888) 227-8334 Fax: (856) 690-0100
www.stopanel.com

PROJECT:				
ARCHITECTS:				
CONSTRUCTION MGR.:				
TITLE:				
SCALE:	DATE:	REVISION:	PROJ.N°:	DWG N°:

sto panelTM Classic ci



Notes:

1. Description: lightweight energy efficient pre-fabricated exterior wall panel with continuous insulation, continuous air barrier, and integral decorative and protective finish options

2. Building Code Compliance: meets requirements of NFPA 285 and NFPA 268 for use on noncombustible construction (Types I-IV). Refer to ICC ESR 1748.

IBC 2009, 2012 and 2015

Chapter 7: Fire Resistance Rated Construction

Chapter 14: Exterior Insulation and Finish Systems, Weather Resistance

Chapter 16: Structural - Transverse Wind Load Resistance

Chapter 17: Special Inspections, Types I-IV

(noncombustible) Construction

Chapter 26: Types I-IV (noncombustible) Construction, Ignition Resistance, Surface Burning Characteristics

IECC 2009, 2012 and 2015

Chapter 4: Continuous Insulation (ci) over Metal Frame Walls - All Climate Zones (with sufficient ci thickness)

Chapter 4: Continuous Air Barrier

IGCC 2012

Chapter 6: Energy Conservation, Efficiency and Atmospheric Quality (Section 606: Building Thermal Envelope insulation and Air Sealing)

Alternative Compliance Path: ASHRAE 189.1-2009

3. Energy Standards Compliance

ASHRAE 90.1 - 2007, 2010 and 2013

Section 5: Building Envelope Continuous Insulation (ci) over Metal Frame Walls - All Climate Zones (with sufficient ci thickness)

Section 5: Continuous Air Barrier

4. Green Building Standards Compliance

ASHRAE 189.1 - 2009

Normative Appendix A: Building Envelope Continuous Insulation (ci) over Metal Frame Walls - All Climate Zones (with sufficient ci thickness)

Normative Appendix B: Continuous Air Barrier

5. LEED Eligibility

Eligible contribution towards credits in the following NC (New Construction) categories:
Energy and Atmosphere (EA)
Materials and Resources (MR)
Innovation in Design (ID)

ATTENTION

Sto products are intended for use by qualified professional contractors, not consumers, as a component of a larger construction assembly as specified by a qualified design professional, general contractor or builder. They should be installed in accordance with those specifications and Sto's instructions. Sto Corp. disclaims all, and assumes no, liability for on-site inspections, for its products applied improperly, or by unqualified persons or entities, or as part of an improperly designed or constructed building, for the nonperformance of adjacent building components or assemblies, or for other construction activities beyond Sto's control. Improper use of Sto products or use as part of an improperly designed or constructed larger assembly or building may result in serious damage to Sto products, and to the structure of the building or its components.

STO CORP. DISCLAIMS ALL WARRANTIES EXPRESSED OR IMPLIED EXCEPT FOR EXPLICIT LIMITED WRITTEN WARRANTIES ISSUED TO AND ACCEPTED BY BUILDING OWNERS IN ACCORDANCE WITH STO'S WARRANTY PROGRAMS WHICH ARE SUBJECT TO CHANGE FROM TIME TO TIME. For the fullest, most current information on proper application, clean-up, mixing and other specifications and warranties, cautions and disclaimers, please refer to the Sto Corp. website, www.stocorp.com.

sto panelTM

Sto Panel Technology

3800 Camp Creek Parkway

Building 1400, Suite 120

Atlanta, Georgia 30331

Phone: (888) 227-8334 Fax: (856) 690-0100

www.stopanel.com

PROJECT:

ARCHITECTS:

CONSTRUCTION MGR.:

TITLE:

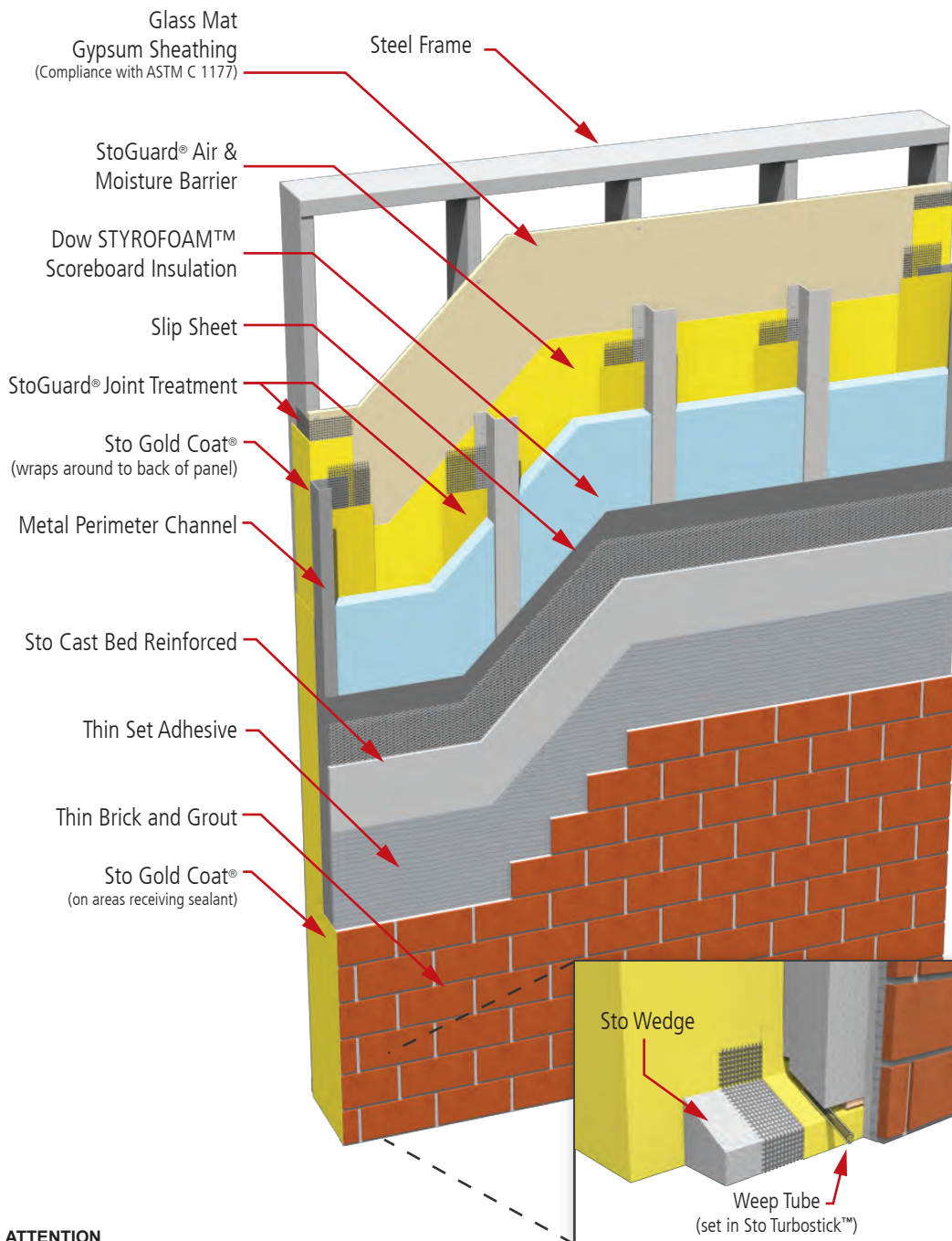
SCALE:

DATE:

REVISION:

PROJ.N°:

DWG N°:



ATTENTION

Sto products are intended for use by qualified professional contractors, not consumers, as a component of a larger construction assembly as specified by a qualified design professional, general contractor or builder. They should be installed in accordance with those specifications and Sto's instructions. Sto Corp. disclaims all, and assumes no, liability for on-site inspections, for its products applied improperly, or by unqualified persons or entities, or as part of an improperly designed or constructed building, for the nonperformance of adjacent building components or assemblies, or for other construction activities beyond Sto's control. Improper use of Sto products or use as part of an improperly designed or constructed larger assembly or building may result in serious damage to Sto products, and to the structure of the building or its components.

STO CORP. DISCLAIMS ALL WARRANTIES EXPRESSED OR IMPLIED EXCEPT FOR EXPLICIT LIMITED WRITTEN WARRANTIES ISSUED TO AND ACCEPTED BY BUILDING OWNERS IN ACCORDANCE WITH STO'S WARRANTY PROGRAMS WHICH ARE SUBJECT TO CHANGE FROM TIME TO TIME. For the fullest, most current information on proper application, clean-up, mixing and other specifications and warranties, cautions and disclaimers, please refer to the Sto Corp. website, www.stocorp.com.

Notes:

1. Description: lightweight energy efficient pre-fabricated exterior wall panel with exterior insulation, continuous air barrier, and integral decorative and protective finish options

2. Building Code Compliance: meets requirements of NFPA 285 and NFPA 268 for use on noncombustible construction (Types I-IV). Refer to ICC ESR 1233 and HAI Project No. 1JJB05184.001.

IBC 2009, 2012 and 2015

Chapter 7: Fire Resistance Rated Construction
Chapter 16: Structural - Transverse Wind Load Resistance

Chapter 26: Types I-IV (noncombustible)
Construction, Ignition Resistance, Surface Burning Characteristics

IECC 2009, 2012 and 2015

Chapter 4: Continuous Air Barrier

IGCC 2012

Chapter 6: Energy Conservation, Efficiency and Atmospheric Quality (Section 606: Building Thermal Envelope insulation and Air Sealing)
Alternative Compliance Path: ASHRAE 189.1-2009

3. Energy Standards Compliance

ASHRAE 90.1 - 2007, 2010 and 2013
Section 5: Continuous Air Barrier

4. Green Building Standards Compliance

ASHRAE 189.1 - 2009
Normative Appendix B: Continuous Air Barrier

5. LEED Eligibility

Eligible contribution towards credits in the following NC (New Construction) categories:
Energy and Atmosphere (EA)
Materials and Resources (MR)
Innovation in Design (ID)

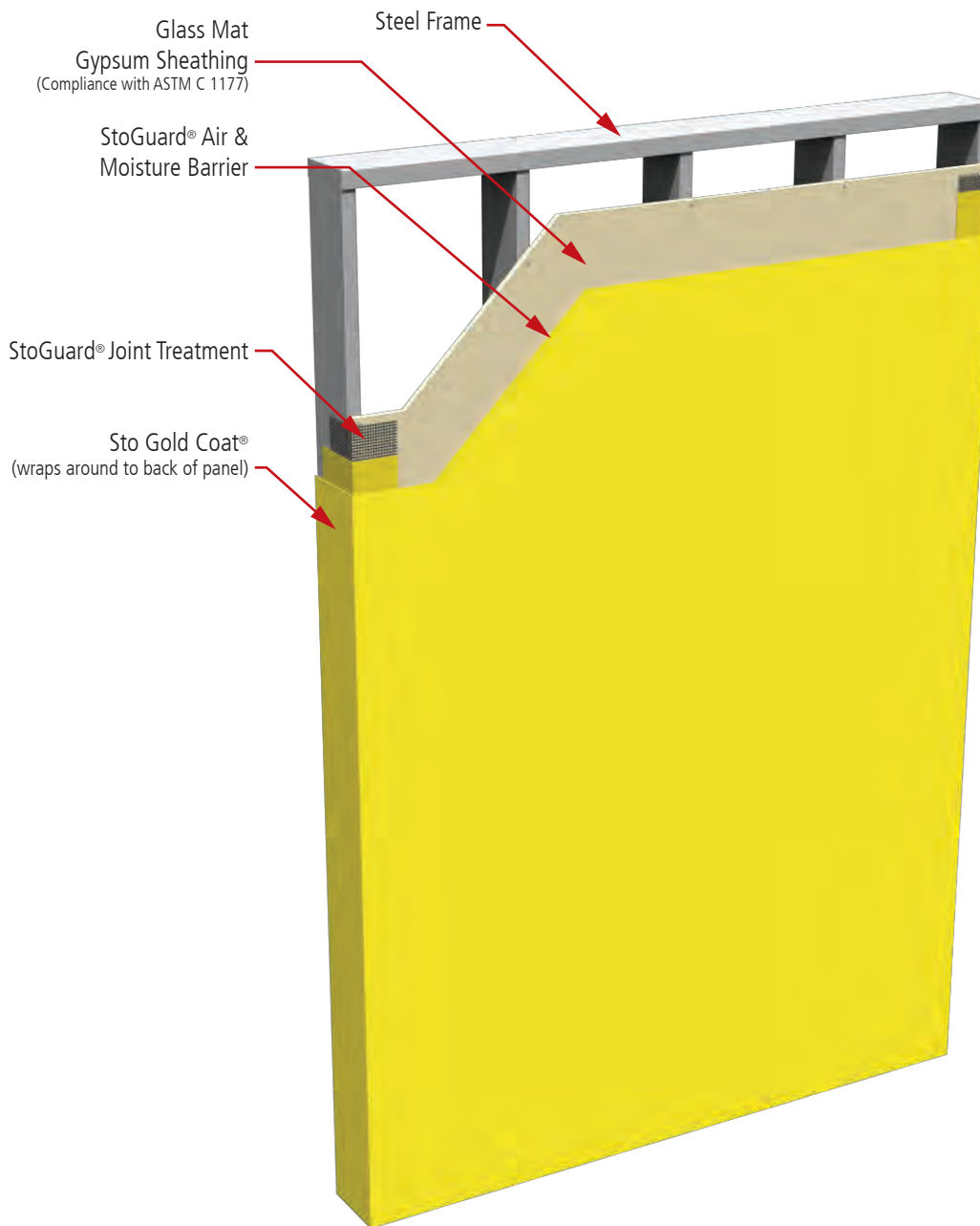
sto panel™

Sto Panel Technology

3800 Camp Creek Parkway
Building 1400, Suite 120
Atlanta, Georgia 30331
Phone: (888) 227-8334 Fax: (856) 690-0100
www.stopanel.com

PROJECT:				
ARCHITECTS:				
CONSTRUCTION MGR.:				
TITLE:				
SCALE:	DATE:	REVISION:	PROJ.N°:	DWG N°:

sto[®]panel[™] Backup



Notes:

1. Description: lightweight energy efficient pre-fabricated exterior wall panel with exterior continuous air and moisture barrier.

2. Building Code Compliance: meets requirements of NFPA 285 and NFPA 268 for use on noncombustible construction (Types I-IV). Refer to ICC ESR 1233 and HAI Project No. 1JJB05184.001.

IBC 2009, 2012 and 2015

Chapter 7: Fire Resistance Rated Construction
Chapter 16: Structural - Transverse Wind Load Resistance

Chapter 26: Types I-IV (noncombustible) Construction, Ignition Resistance, Surface Burning Characteristics

IECC 2009, 2012 and 2015

Chapter 4: Continuous Air Barrier

IGCC 2012

Chapter 6: Energy Conservation, Efficiency and Atmospheric Quality (Section 606: Building Thermal Envelope insulation and Air Sealing)

Alternative Compliance Path: ASHRAE 189.1-2009

3. Energy Standards Compliance

ASHRAE 90.1 - 2007, 2010 and 2013

Section 5: Continuous Air Barrier

4. Green Building Standards Compliance

ASHRAE 189.1 - 2009

Normative Appendix B: Continuous Air Barrier

5. LEED Eligibility

Eligible contribution towards credits in the following NC (New Construction) categories:

Energy and Atmosphere (EA)
Materials and Resources (MR)
Innovation in Design (ID)

ATTENTION

Sto products are intended for use by qualified professional contractors, not consumers, as a component of a larger construction assembly as specified by a qualified design professional, general contractor or builder. They should be installed in accordance with those specifications and Sto's instructions. Sto Corp. disclaims all, and assumes no, liability for on-site inspections, for its products applied improperly, or by unqualified persons or entities, or as part of an improperly designed or constructed building, for the nonperformance of adjacent building components or assemblies, or for other construction activities beyond Sto's control. Improper use of Sto products or use as part of an improperly designed or constructed larger assembly or building may result in serious damage to Sto products, and to the structure of the building or its components.

STO CORP. DISCLAIMS ALL WARRANTIES EXPRESSED OR IMPLIED EXCEPT FOR EXPLICIT LIMITED WRITTEN WARRANTIES ISSUED TO AND ACCEPTED BY BUILDING OWNERS IN ACCORDANCE WITH STO'S WARRANTY PROGRAMS WHICH ARE SUBJECT TO CHANGE FROM TIME TO TIME. For the fullest, most current information on proper application, clean-up, mixing and other specifications and warranties, cautions and disclaimers, please refer to the Sto Corp. website, www.stocorp.com.

sto[®]panel[™]
Sto Panel Technology

3800 Camp Creek Parkway
Building 1400, Suite 120
Atlanta, Georgia 30331
Phone: (888) 227-8334 Fax: (856) 690-0100
www.stopanel.com

PROJECT:

ARCHITECTS:

CONSTRUCTION MGR.:

TITLE:

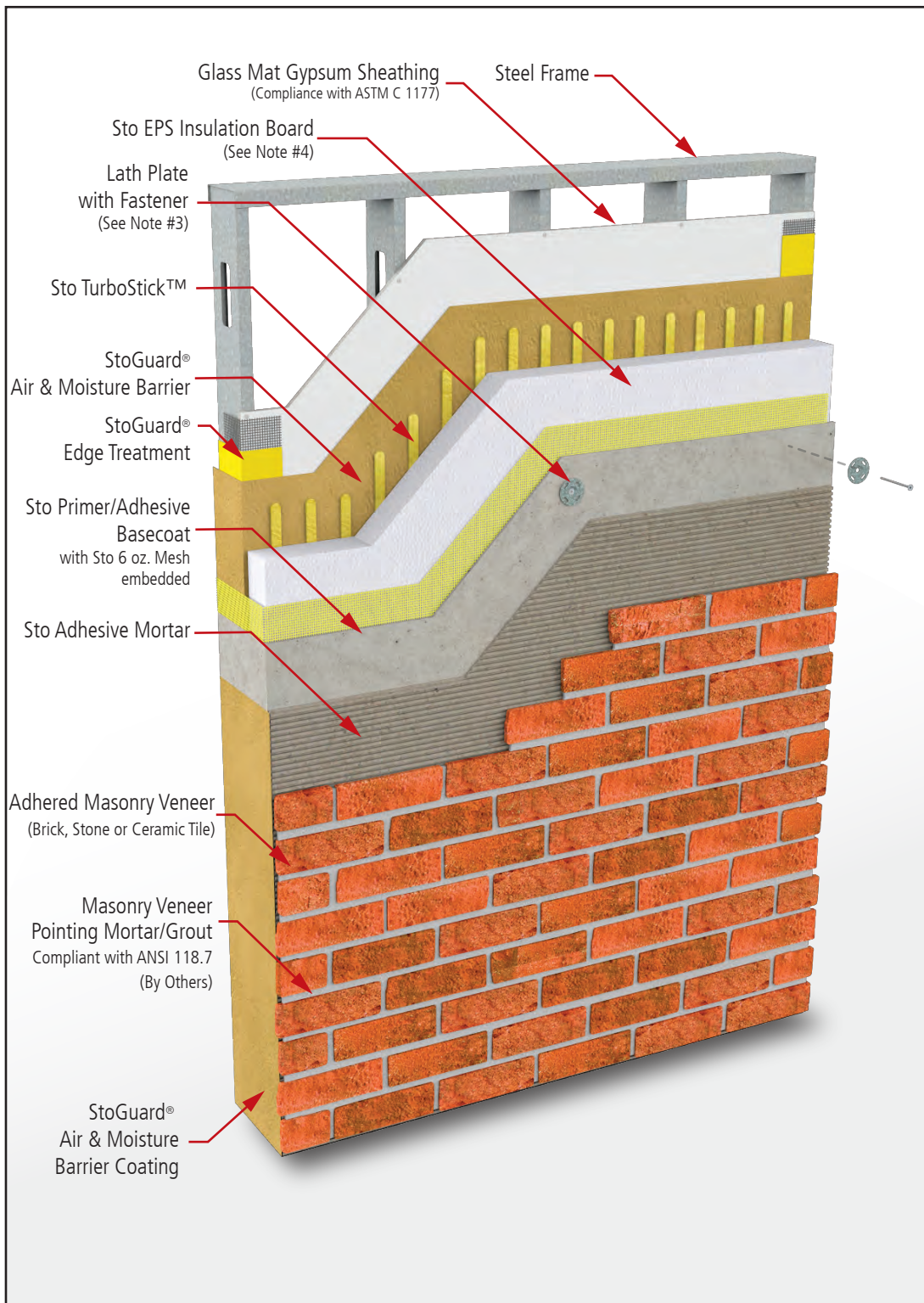
SCALE:

DATE:

REVISION:

PROJ.N°:

DWG N°:



Detail No.: **51.100**

Date: **February 2021**

Page: **1 of 2**

Notes:

1. StoPanel® MVES ci is an engineered insulating wall system with Adhered Masonry Veneer (AMV) – thin brick, natural stone, ceramic tile, or cultured stone. It combines superior air and weather tightness with excellent thermal performance and durability. It incorporates continuous exterior insulation and a continuous air/moisture barrier with Sto high strength masonry veneer adhesive.

2. Install weep tubes nominal 24" apart and align with mortar joints. Extension outbound of veneer is optional.

3. Corrosion resistant fastener with 1-1/4 inch (32mm) diameter flat galvanized steel lath-plate (legless) washer.

4. Sto EPS Insulation Board: nominal 1lb/ft³ expanded polystyrene insulation, minimum 1 inch thick, maximum 4 inches thick, in compliance with ASTM E2430

ATTENTION

Property of Sto Corp. All Rights Reserved.

www.stopanel.com

Sto products are intended for use by qualified professional contractors, not consumers, as a component of a larger construction assembly as specified by a qualified design professional, general contractor or builder. They should be installed in accordance with those specifications and Sto's instructions. Sto Corp. disclaims all, and assumes no, liability for on-site inspections, for its products applied improperly, or by unqualified persons or entities, or as part of an improperly designed or constructed building, for the nonperformance of adjacent building components or assemblies, or for other construction activities beyond Sto's control. Improper use of Sto products or use as part of an improperly designed or constructed larger assembly or building may result in serious damage to Sto products, and to the structure of the building or its components.

STO CORP. DISCLAIMS ALL WARRANTIES EXPRESSED OR IMPLIED EXCEPT FOR EXPLICIT LIMITED WRITTEN WARRANTIES ISSUED TO AND ACCEPTED BY BUILDING OWNERS IN ACCORDANCE WITH STO'S WARRANTY PROGRAMS WHICH ARE SUBJECT TO CHANGE FROM TIME TO TIME.

For the fullest, most current information on proper application, clean-up, mixing and other specifications and warranties, cautions and disclaimers, please refer to the Sto Corp. website, www.stocorp.com.



Detail No.: **51.100**

Date: **February 2021**

Page: **2 of 2**

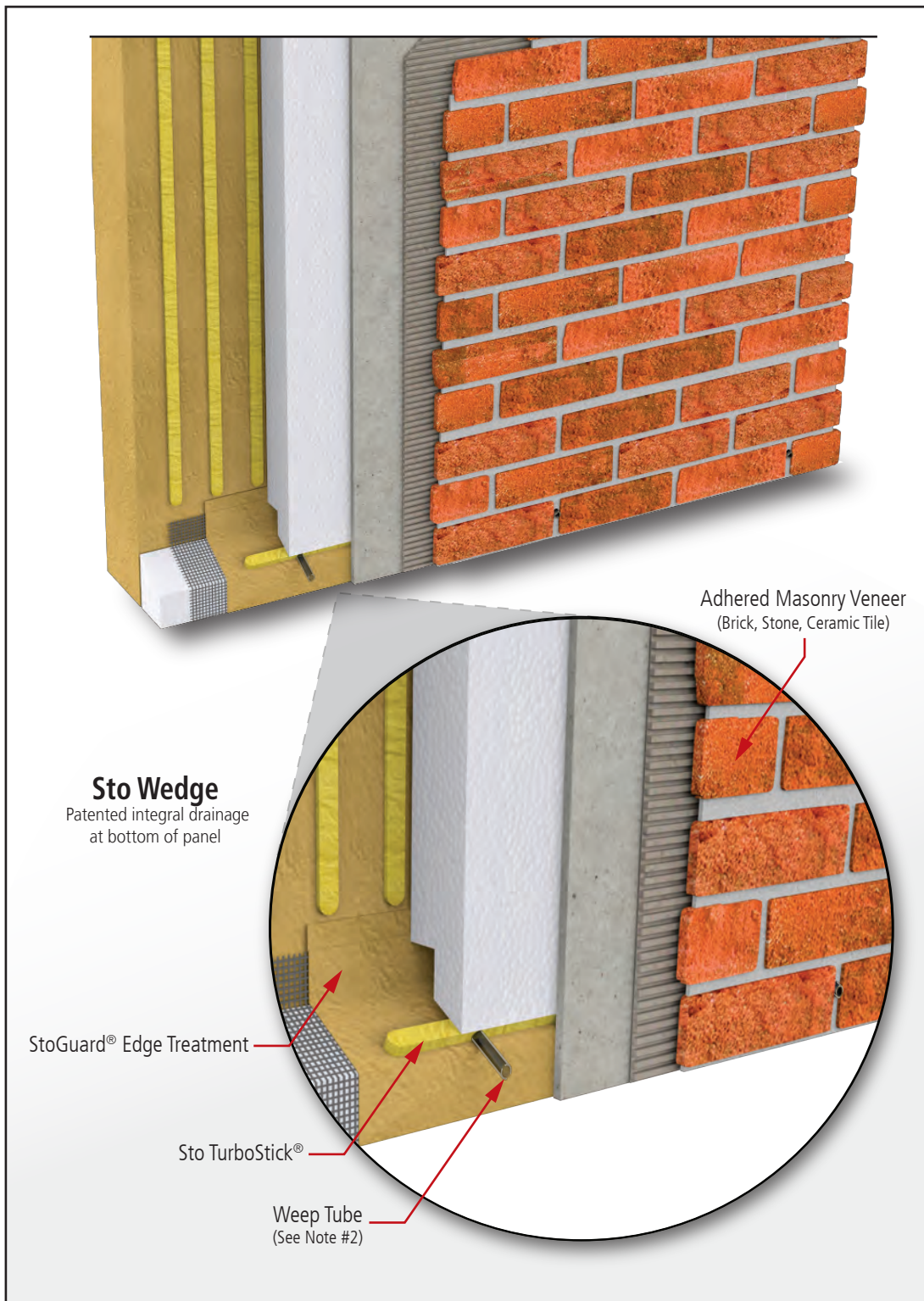
Notes:

1. StoPanel® MVES ci is an engineered insulating wall system with Adhered Masonry Veneer (AMV) – thin brick, natural stone, ceramic tile, or cultured stone. It combines superior air and weather tightness with excellent thermal performance and durability. It incorporates continuous exterior insulation and a continuous air/moisture barrier with Sto high strength masonry veneer adhesive.

2. Install weep tubes nominal 24" apart and align with mortar joints. Extension outbound of veneer is optional.

3. Corrosion resistant fastener with 1-1/4 inch (32mm) diameter flat galvanized steel lath-plate (legless) washer.

4. Sto EPS Insulation Board: nominal 1lb/ft³ expanded polystyrene insulation, minimum 1 inch thick, maximum 4 inches thick, in compliance with ASTM E2430



ATTENTION

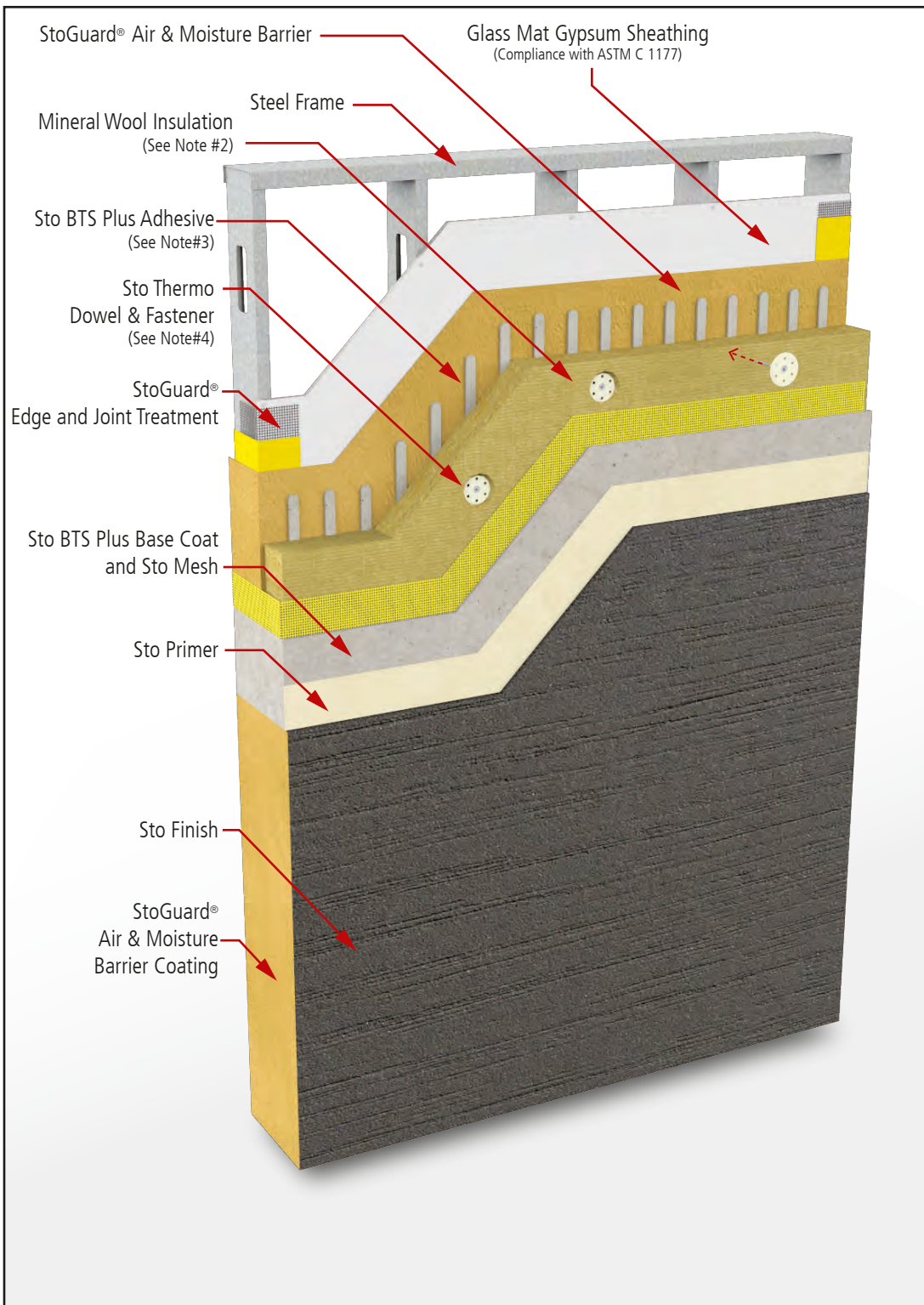
Property of Sto Corp. All Rights Reserved.

Sto products are intended for use by qualified professional contractors, not consumers, as a component of a larger construction assembly as specified by a qualified design professional, general contractor or builder. They should be installed in accordance with those specifications and Sto's instructions. Sto Corp. disclaims all, and assumes no, liability for on-site inspections, for its products applied improperly, or by unqualified persons or entities, or as part of an improperly designed or constructed building, for the nonperformance of adjacent building components or assemblies, or for other construction activities beyond Sto's control. Improper use of Sto products or use as part of an improperly designed or constructed larger assembly or building may result in serious damage to Sto products, and to the structure of the building or its components.

STO CORP. DISCLAIMS ALL WARRANTIES EXPRESSED OR IMPLIED EXCEPT FOR EXPLICIT LIMITED WRITTEN WARRANTIES ISSUED TO AND ACCEPTED BY BUILDING OWNERS IN ACCORDANCE WITH STO'S WARRANTY PROGRAMS WHICH ARE SUBJECT TO CHANGE FROM TIME TO TIME. For the fullest, most current information on proper application, clean-up, mixing and other specifications and warranties, cautions and disclaimers, please refer to the Sto Corp. website, www.stocorp.com.

www.stopanel.com





Detail No.: **51.90**

Date: **January 2021**

Page: **1 of 3**

Notes:

1. StoPanel® Mineral ci is a prefabricated exterior wall panel with noncombustible continuous insulation, continuous air and moisture barrier, and can be finished with a wide variety of standard and specialty Sto textured finish options.
2. Owens Corning Thermafiber™ CI-C SC18 Mineral Wool Insulation (3" - 4")
3. Vertical ribbons to provide channels for drainage.
4. 2-3/8" inch diameter (60mm) Sto Thermo Dowel with 1/4" (6 mm) corrosion resistant star head type screw fastener. Refer to page 3 for Sto Thermo Cap Wool.
5. Consult with Sto Corp. Technical Dept. for additional information about supplemental fastener rings for increased wind-load performance.

ATTENTION

Property of Sto Corp. All Rights Reserved.

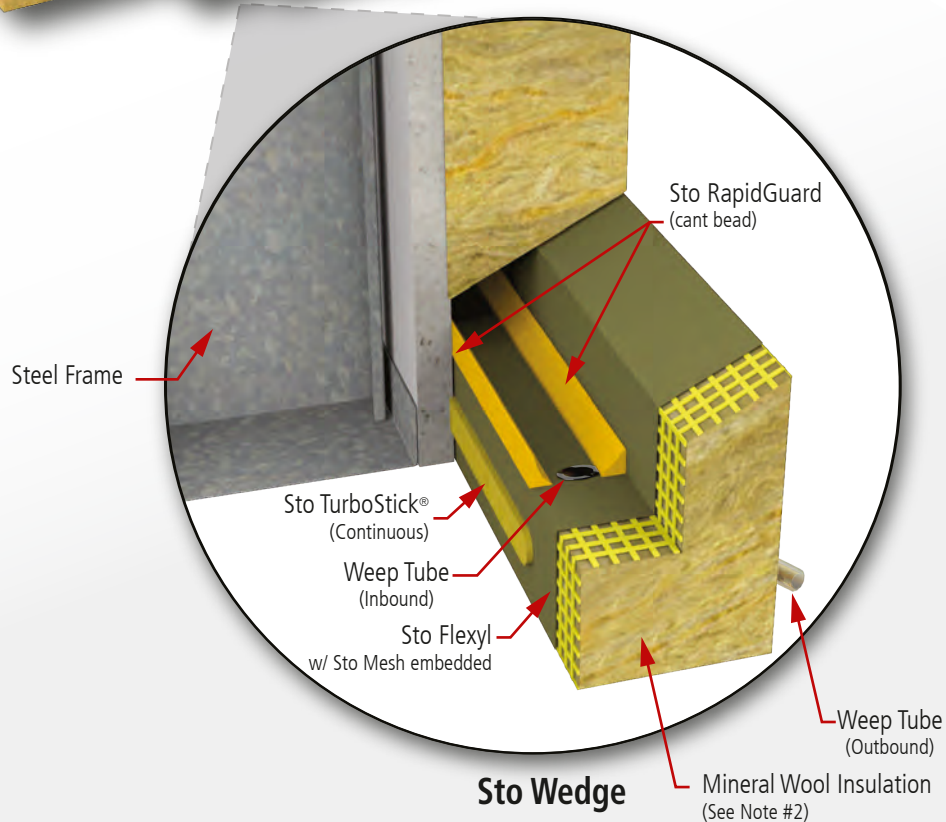
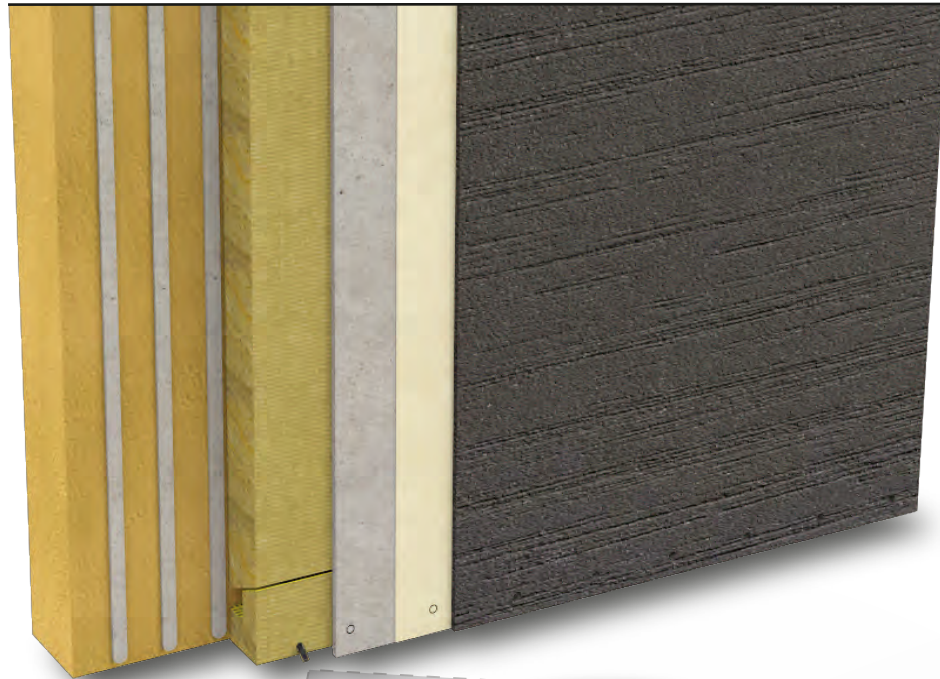
Sto products are intended for use by qualified professional contractors, not consumers, as a component of a larger construction assembly as specified by a qualified design professional, general contractor or builder. They should be installed in accordance with those specifications and Sto's instructions. Sto Corp. disclaims all, and assumes no, liability for on-site inspections, for its products applied improperly, or by unqualified persons or entities, or as part of an improperly designed or constructed building, for the nonperformance of adjacent building components or assemblies, or for other construction activities beyond Sto's control. Improper use of Sto products or use as part of an improperly designed or constructed larger assembly or building may result in serious damage to Sto products, and to the structure of the building or its components.

STO CORP. DISCLAIMS ALL WARRANTIES EXPRESSED OR IMPLIED EXCEPT FOR EXPLICIT LIMITED WRITTEN WARRANTIES ISSUED TO AND ACCEPTED BY BUILDING OWNERS IN ACCORDANCE WITH STO'S WARRANTY PROGRAMS WHICH ARE SUBJECT TO CHANGE FROM TIME TO TIME.

For the fullest, most current information on proper application, clean-up, mixing and other specifications and warranties, cautions and disclaimers, please refer to the Sto Corp. website, www.stocorp.com.

www.stopanel.com





Detail No.: **51.90**

Date: **January 2021**

Page: **2 of 3**

Notes:

1. StoPanel® Mineral ci is a prefabricated exterior wall panel with noncombustible continuous insulation, continuous air and moisture barrier, and can be finished with a wide variety of standard and specialty Sto textured finish options.
2. Owens Corning Thermafiber™ CI-C SC18 Mineral Wool Insulation (3" - 4")
3. Vertical ribbons to provide channels for drainage.
4. 2-3/8" inch diameter (60mm) Sto Thermo Dowel with 1/4" (6 mm) corrosion resistant star head type screw fastener. Refer to page 3 for Sto Thermo Cap Wool.
5. Consult with Sto Corp. Technical Dept. for additional information about supplemental fastener rings for increased wind-load performance.

ATTENTION

Property of Sto Corp. All Rights Reserved.

Sto products are intended for use by qualified professional contractors, not consumers, as a component of a larger construction assembly as specified by a qualified design professional, general contractor or builder. They should be installed in accordance with those specifications and Sto's instructions. Sto Corp. disclaims all, and assumes no, liability for on-site inspections, for its products applied improperly, or by unqualified persons or entities, or as part of an improperly designed or constructed building, for the nonperformance of adjacent building components or assemblies, or for other construction activities beyond Sto's control. Improper use of Sto products or use as part of an improperly designed or constructed larger assembly or building may result in serious damage to Sto products, and to the structure of the building or its components.

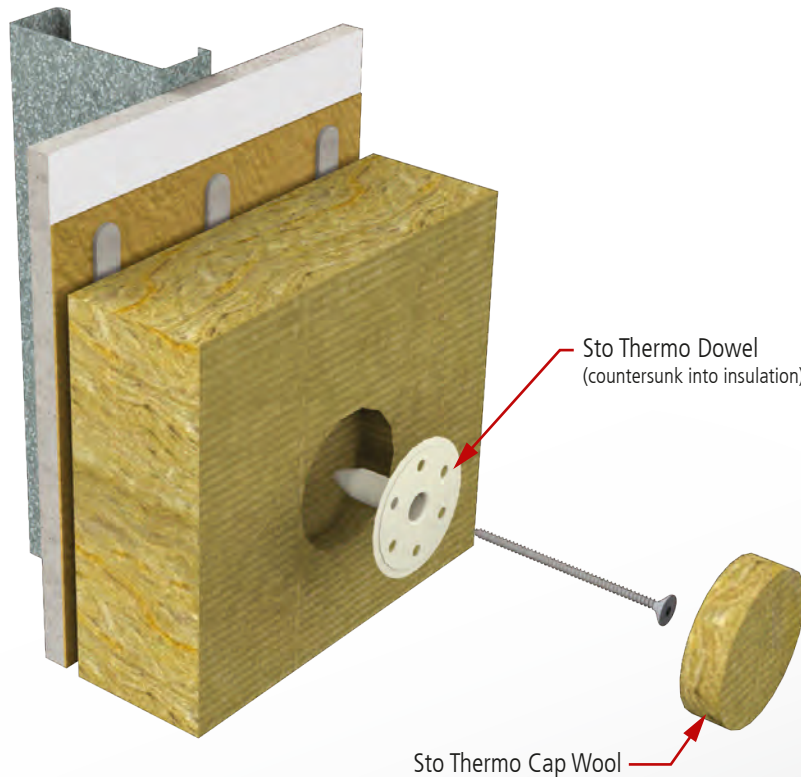
STO CORP. DISCLAIMS ALL WARRANTIES EXPRESSED OR IMPLIED EXCEPT FOR EXPLICIT LIMITED WRITTEN WARRANTIES ISSUED TO AND ACCEPTED BY BUILDING OWNERS IN ACCORDANCE WITH STO'S WARRANTY PROGRAMS WHICH ARE SUBJECT TO CHANGE FROM TIME TO TIME. For the fullest, most current information on proper application, clean-up, mixing and other specifications and warranties, cautions and disclaimers, please refer to the Sto Corp. website, www.stocorp.com.

www.stopanel.com



Mechanical Fastening

with Sto Thermo Dowel and Fastener



Detail No.: **51.90**

Date: **January 2021**

Page: **3 of 3**

Notes:

1. StoPanel® Mineral ci is a prefabricated exterior wall panel with noncombustible continuous insulation, continuous air and moisture barrier, and can be finished with a wide variety of standard and specialty Sto textured finish options.
2. Owens Corning Thermafiber™ CI-C SC18 Mineral Wool Insulation (3" - 4")
3. Vertical ribbons to provide channels for drainage.
4. 2-3/8" inch diameter (60mm) Sto Thermo Dowel with 1/4" (6 mm) corrosion resistant star head type screw fastener and Sto Thermo Cap Wool to prevent thermal bridging.
5. Consult with Sto Corp. Technical Dept. for additional information about supplemental fastener rings for increased wind-load performance.

ATTENTION

Property of Sto Corp. All Rights Reserved.

Sto products are intended for use by qualified professional contractors, not consumers, as a component of a larger construction assembly as specified by a qualified design professional, general contractor or builder. They should be installed in accordance with those specifications and Sto's instructions. Sto Corp. disclaims all, and assumes no, liability for on-site inspections, for its products applied improperly, or by unqualified persons or entities, or as part of an improperly designed or constructed building, for the nonperformance of adjacent building components or assemblies, of for other construction activities beyond Sto's control. Improper use of Sto products or use as part of an improperly designed or constructed larger assembly or building may result in serious damage to Sto products, and to the structure of the building or its components.

STO CORP. DISCLAIMS ALL WARRANTIES EXPRESSED OR IMPLIED EXCEPT FOR EXPLICIT LIMITED WRITTEN WARRANTIES ISSUED TO AND ACCEPTED BY BUILDING OWNERS IN ACCORDANCE WITH STO'S WARRANTY PROGRAMS WHICH ARE SUBJECT TO CHANGE FROM TIME TO TIME.

For the fullest, most current information on proper application, clean-up, mixing and other specifications and warranties, cautions and disclaimers, please refer to the Sto Corp. website, www.stocorp.com.

www.stopanel.com

