

Powder Coat Color Options

The following color options are available across Arktura's range of steel and aluminum products. See product specific brochures for restrictions:

Standard Finish



T-Grid White*
(Matte)



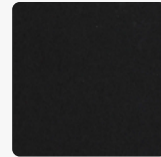
Arktura White
(Matte)



Brilliant White
(Gloss)



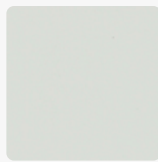
Silver Metallic
(Semi Gloss)



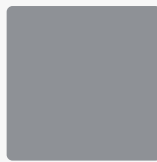
Jet Black
(Matte)



Aviator Gray
(Gloss)



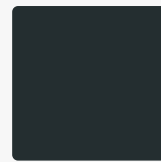
Aviator Gray
(Matte)



Steel Gray



Shadow



Midnight



Coffee



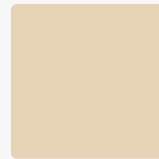
Raw Umber



Caramel



Sandstone



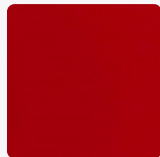
Oat



Sunflower



Torch



Spirit Red
(Matte)



Azure

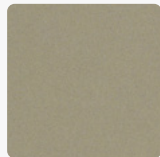


Blue Steel

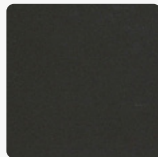


Forest Green

Premium Metallic Finish



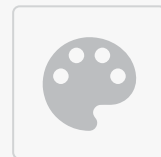
Chilled Champagne
(Semi Gloss)



Burnished Bronze
(Semi Gloss)

Custom Colors

We offer premium non-stock RAL and custom color match options as well. Contact your sales rep for more information.



Non-stock
RAL



Non-stock
Metallic

* This color was designed to pair with Armstrong color "WH" grid and trim.

i All premium and standard finishes shown are designed for interior specifications. Products may be specified for exterior use, and with alt treatments required by local code or facility, including custom color match or specialty finishes. Any changes to specification from interior standard or interior premium will result in a custom powder coat fee.