

MANUAL SHADE SOLUTIONS



Mecho has been the leader in the commercial shading industry for more than 50 years. Our passion is innovation and the pursuit of helping architects and designers achieve better performance for building occupants while improving design aesthetics.

Our innovative technology allows our manual shading systems to lift larger, heavier shades and provides a consistent, nearly effortless user experience.

If you want the best, work with the best.



The Ideal Manual Shading Solution for Every Industry

Mecho offers exceptional manual shade systems that meet both the aesthetic and functional needs of any environment.

Hospitality

- Clean, contemporary look integrates into any décor
- Wide assortment of available shade cloths
- Durable and easy to clean

Corporate

- Meets the aesthetic and functional needs of office environments.
- Flexible applications. Easily lift large and small shades
- Increases employee morale through the control of brightness and glare
- Significant reduction in solar heat gain

Multi-Family

- Control daylight while retaining view
- Energy savings from reduced lighting and cooling costs
- Performance-proven, durable solutions for shading requirements
- Uniform aesthetic in windows or along curtain-wall

Healthcare

- The reduced pull force makes it ideal for senior living or patients with compromised capabilities

› mechoshade.com/solutions/#industry

Energy Efficient, View-Preserving Shades

Get exterior views and performance driven daylight management, all while reducing solar gain and filtering out harmful UV rays with manual shades from Mecho.

Studies have shown that controlled daylight improves building occupant's overall health, job satisfaction, performance, and well-being. A Mecho manual shade system provides maximum daylight for occupant comfort and productivity while controlling the unwanted effects of solar heat gain and glare. Mecho offers proprietary shade cloth that range from opaque to transparent in a wide variety of colors.



Performance + Reliability + Versatility

Our patented shade systems work in standard commercial window applications and perform exceptionally well with large or multi-banded shades. Larger shades and multi-banded shade systems preserve design intent by reducing the number of pull chains and light gaps creating a superior design aesthetic.

Mecho offers the most comprehensive daylighting and room-darkening solutions available in a chain-driven system.

Cradle to Cradle Certified Shade System

When installed with EcoVeil, EcoVeil Sheer, or AcoustiVeil shade cloth, Mecho's manual shade systems are a Cradle to Cradle Bronze certificated solution. This can also contribute points toward a building's LEED or WELL certification.



Enhance Building Sustainability

Architects and designers consistently turn to Mecho to achieve performance, quality, and comfort while helping building designs meet the U.S. Green Building Council's LEED and WELL Rating Systems.

> mechoshade.com/sustainability



ImageShades

Mecho's customized, printed shade cloth that allows you to add photography, logos, artwork or messaging to most of our shade cloths.



ImageShades are a powerful alternative to the standard signage of point-of-purchase and store windows.

An outstanding marketing opportunity—all with the additional features and benefits of a Mecho solar shade!

> mechoshade.com/imageshade

Why Mecho Manual Shades?

Mecho is the premier solution for state-of-the-art manual shading systems. Our commitment to environmentally responsible, human-centric design, and energy-saving products is recognized as the preferred solution provider to the architecture and design community.



Strong

In most cases, our innovative, patented technology allows our manual shading systems to lift larger, heavier shades than our competition and provide a consistent, nearly effortless user experience.

Durable

Field-tested and performance-proven reliability from hundreds of thousands of installations make our manual shades ideal for commercial applications. Engineered components throughout increase the overall lift capacity and efficiency of our shades

Flexible

Our Manual shade systems are engineered to provide flexible design configurations needed to allow natural daylight into a building and preserve outside views while blocking unwanted solar heat gain and glare.

Available in a single or double shade or multi-banded configurations. Our manual shade systems incorporate any of Mecho's hundreds of proprietary solar shade cloths to provide an aesthetically pleasing, complete solar control solution. Mecho is the only manufacturer to actively promote and spec manual multi-band shades

Shade Cloth

Choose from hundreds of expertly-engineered shade cloth options for an aesthetically pleasing daylight control solution



Soho Elavate

Powered by PROTX2®, this shade cloth provides an additional layer of performance with patent-pending, medical-grade, metal-free technology.

Chelsea Blackout

This PVC-free fabric combines a fine fabric with solid, graphite or white-colored backing to create a shade cloth that is opaque and attractive from interior and exterior viewpoints.

EcoVeil Sheer

Inherently flame-retardant shade cloth that is ideal for educational, residential, healthcare, and other health-focused spaces

SoHo

Basket weave shade cloth woven with fine polyester yarns, available in 14 distinct, designer-selected colors and three densities

Order Free Swatches

> mechoshade.com/swatches

Multi-Band Applications

For multi-banded applications, Mecho's adjustable shade coupler is included to speed the installation process and ensure precise, even and consistent shade heights and eliminate hembar misalignment.

Mecho/7

Mecho/7's breakthrough, patented technology allows it to lift larger, heavier commercial grade shades while still providing the same consistent user experience and breath of features as the Mecho/5x.



Lift Larger Shades

Mecho/7 can now lift shades covering up to 30' of glass. This improves design aesthetic and user experience by eliminating multiple chain pulls and reducing light gaps.

Upgraded Durability

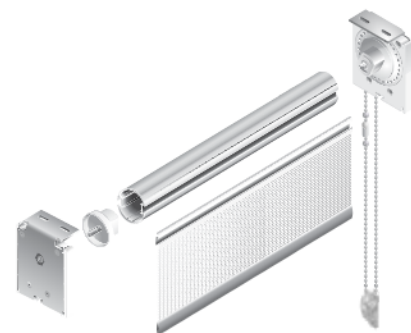
Mecho/7 has been designed with a shock-absorbing urethane bumper to prevent shade down-time caused by chain breakage.

Manual to Motorized Shades

Mecho/7 offers the flexibility to change based on project needs or budgets. Allowing for a simple and cost-effective upgrade scenario.

Mecho/5x

Our innovative, patented technology provides a consistent, nearly effortless user experience. Mecho/5x is the first innovation on the clutch that started the commercial shade industry.



Different Shades, Similar User Experience

Mecho/5x allows for multi-banded shades, including 5 bands, up to 240" wide (depending on fabric weight) and single shades up to 180" wide.

ADA Compliant

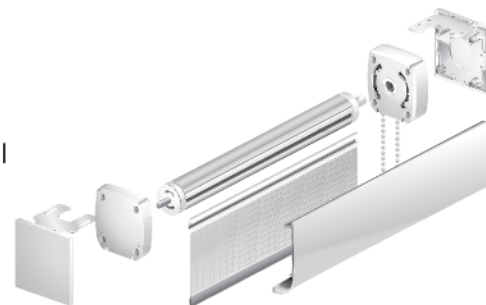
No matter the size of the shade, the pull force is within ADA standards, something that our competitors cannot say about their shades.

Greater Pull Angle on Chain

Increased angle on shade pull chain to avoid window obstructions + furnishings

UrbanShade

UrbanShade is a cost-effective commercial solution especially geared for single-banded shades. It is easily installed with its compact design and providing unmatched flexibility to manage daylight.



Compact, Versatile Design

Engineered to provide flexible design configurations, UrbanShade has a small form factor that reduces impact on punched windows and pocket-constrained curtain walls

Field Upgradeable

UrbanShade can be converted from a manual to a motorized system, in the field, by merely replacing the control head.

Available with an Embedded Battery Motor

No wiring for installers, minimal maintenance for users. UrbanShade with embedded battery motor is easy to install and flexible to control!