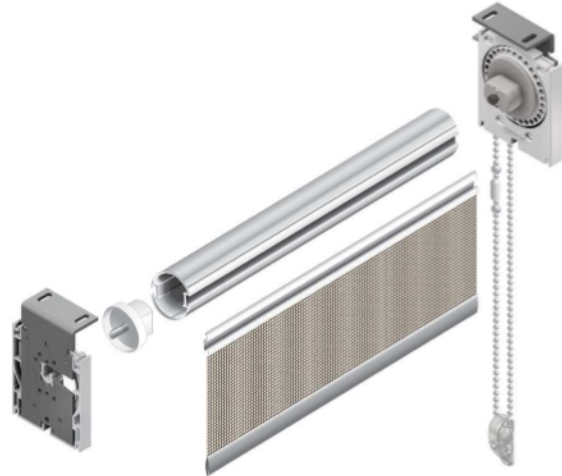


Mecho®/7

Data Sheet

Model

Mecho/7



Description

Mecho/7, Mecho's latest innovation, takes large and coupled shades to the next level. Built on the Mecho/5X chassis, Mecho/7 raises the bar once again for the commercial architectural market, setting new standards in durability, reliability and flexibility.

Mecho/7 leverages Mecho's patented Lift Force Management algorithms, now for shade sizes up to 50lbs including shades extending to a full commercial bay of windows (30 ft) from a single chain! Meanwhile, its direct drive engine offers the user a best experience by requiring no more than 8.5lbs of pull force and an efficient stroke to take care of business quickly over competitive geared clutches that leave the user pulling more than 3X longer to perform the same task.

Furthermore, with big shades comes big reliability and rugged durability. Mecho/7 builds its performance on the patented oil-impregnated hub that made Mecho/5 famous. Now it adds a patent-pending urethane dampener solution into the clutch providing shock protection to keep this workhorse and the client's project operational under its best-in class warranty.

Finally, Mecho/7 is produced from sustainable materials and methods offering the industry's only full Cradle-to-Cradle certified shade solution when coupled with our EcoVeil or EcoVeil Sheer shade cloths. When upgrading to motorization it also offers shade solutions that are fully ETL Listed to UL 325 avoiding. Once motorized, the new shade can be automated to optimize both occupant and building performance using our SolarLinc™ or SolarTrac® platforms.

Features and Benefits

- Single clutch form factor operates shades up to 30ft wide or 50lbs of hanging weight from a single chain.
- Patent-pending urethane dampener ensures industry-leading durability and reliability that covers the shade hardware, beadchain and system.
- Patent-pending managed pull force algorithm ensures shades of any size require between 3 and 8.5lbs of pull force. Can be optionally selected to meet ADA pull force requirements of no more than 5 lbs of pull force.
- Motorization field upgrade option does not require a new shade band. Wireless motor options prevent the need to add wiring for power or communication.
- Flexible hardware configurations support pocket, exposed installation with optional fascia, DoubleShade configuration on a common bracket with alignment vertically or horizontally.
- Several side channel and guide cable options to manage the plane of the fabric.
- Patented adjustable multiband coupler speeds installation of multiband shades to align adjacent bands and offers the industry's best edge clearances.
- Cradle-to-Cradle Bronze™ Certified full shade system! Mecho/7 Hardware + EcoVeil®, EcoVeil Sheer and AcoustiVeil® commercial shade cloth.
- Fascia options come in 7 designer colors: White, Black, Alabaster, Clear Anodized, Grey, Quaker Bronze, Colonial White. Custom colors on request.



(718) 729-2020
mechoshade.com

Mecho/7

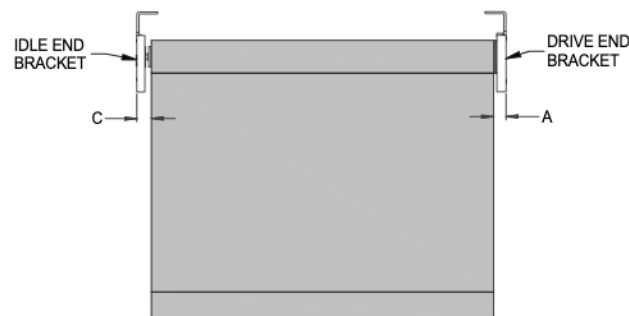
Specifications

Bracket Specifications										
		Mecho/7 Standard	Mecho/7 Pocket	Mecho/7 Extended	Mecho/7 Double #15 & 16		Mecho/7 Double Stand #10 & 11		Mecho/7 Double Pocket #10 & 11	
					BO Fabric	Solar Fabric	BO Fabric	Solar Fabric	BO Fabric	Solar Fabric
Max Shade Hanging Weight, lbs. (kg)		30 (13.6)								
Pull Force Range, lbs. (kg)		3.5 (1.6) - 8.5 (3.9)								
Shadecloth Edge Clearance for 1.5-in tube, in. (mm)	A. Drive end	0.689 (17.5)				0.812 (20.6)				
	B. Center Support	0.625 (15.9)				0.75 (19.0)				
	C. Idle end	0.5 (12.7)				0.625 (15.9)				
Range of angular adjustment between adjacent bands		±15°								
Max RUD with Fascia, in (mm)		2.75 (69.9)	N/A	3.438 (87.3)	2.75 (69.9)	3.375 (85.7)	2.75 (69.9)		3.75 (95.3)	
Max RUD without Fascia, in (mm)		2.75 (69.9)	4.0 (101.6)	5.0 (127)	2.75 (69.9)	4.313 (109.6)	2.75 (69.9)		3.75 (95.3)	
Tube Diameter Compatibility, in (mm)		1.23 (31.2)*; 1.50 (38.1)*; 1.79 (45.5); 1.875 (47.6)*; 2.2 (55.9); 2.53 (64.3)								

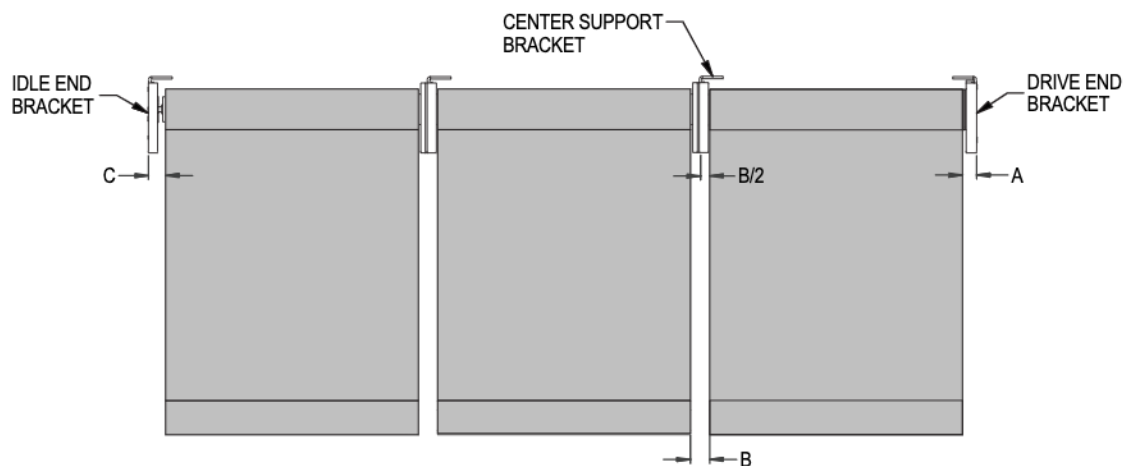
* Angular adjustment between adjacent bands not available.

**For Indoor Use ONLY.

Single Band Shade Assembly



Multi-Band Shade Assembly



Mecho/7

Mounting

Ensure the mounting substrate in the bracket installation area is adequate to support the full weight of the shade, including the worst-case pulling force and any other external influences that could add to the forces acting upon this structure.

The substrate, or base material to which the bracket is installed, may be wood, metal, concrete, etc. It is essential to verify the sturdiness of the substrate because installation of a bracket to inadequate substrate material will jeopardize the safety of the installation and may result in injury.

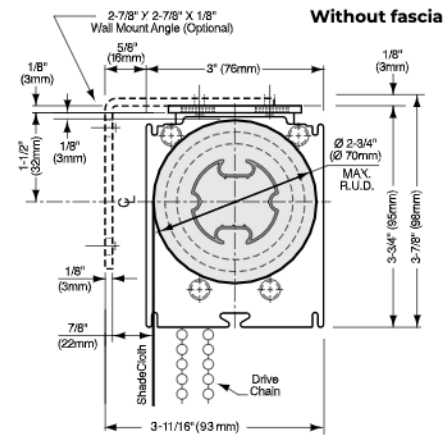
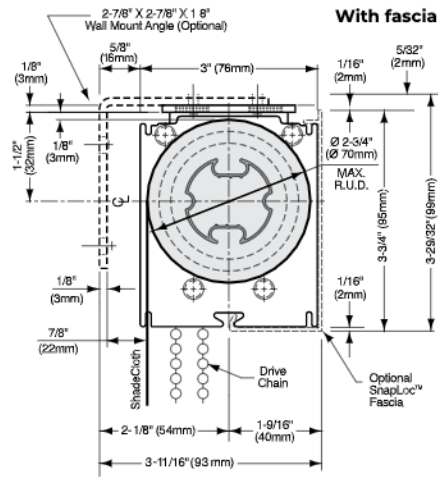
Wood blocking is recommended for roller shades installed under the contract of the interior general contractor which shall be installed plumb, level, and fitted to window mullion as per interior architect's design documents and in accordance with industry standard tolerances. The horizontal surface of the shade pocket shall not be out-of-level more than 5/8th of an inch (16 mm) over 20 linear feet (6.1 meters).

When determining the proper screw type and length for installation, consider the mounting substrate material makeup. The appropriate type of screw must be selected in order to ensure a safe and successful installation. The screws should fit properly through the slots and kill holes on the brackets. The minimum screw sizes are dependent on the type of bracket as described below.

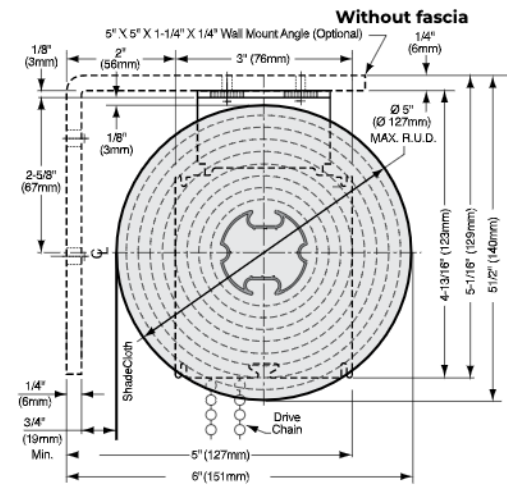
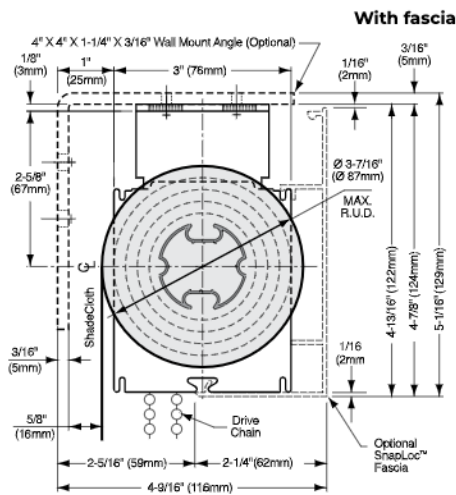
	Ceiling	Wall	Jamb
Single Standard/Pocket/Extended	2 x #8	2 x #6, Extended 3 x #10	2 x #8
DoubleShade Vertical (#15, 16) - #10	4 x #10	3 x #12	4 x #10
DoubleShade Horizontal (#10, 11) - #10	4 x #8	3 x #8	4 x #10

Dimensions

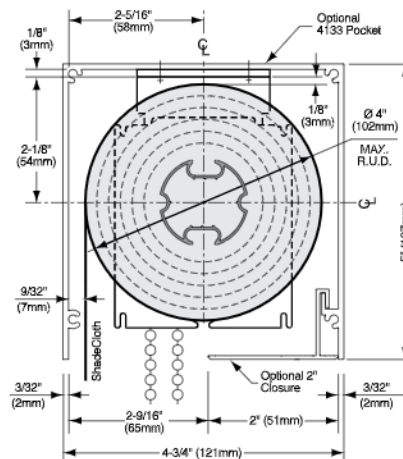
Standard Bracket



Extended Bracket

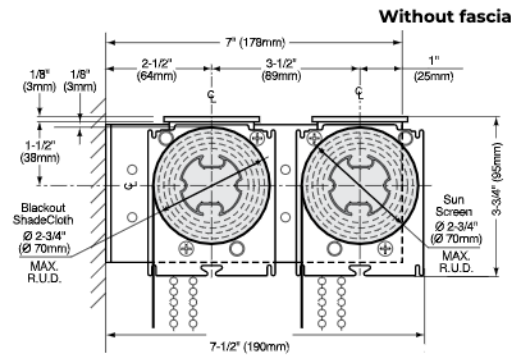
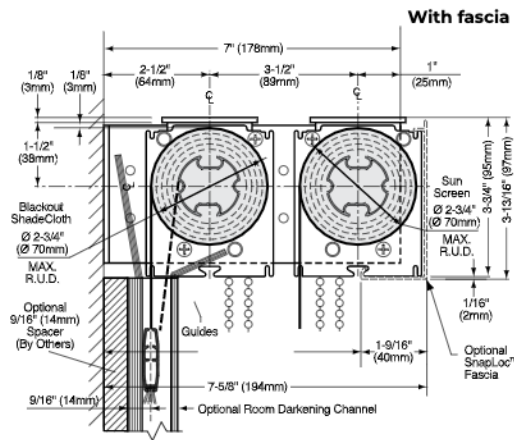


Pocket Bracket

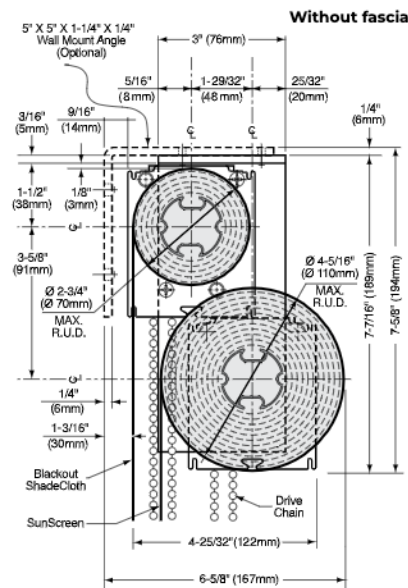
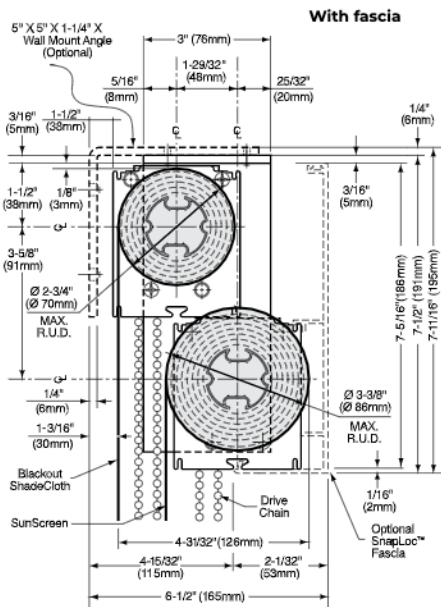


Dimensions

DoubleShade Bracket #10, 11

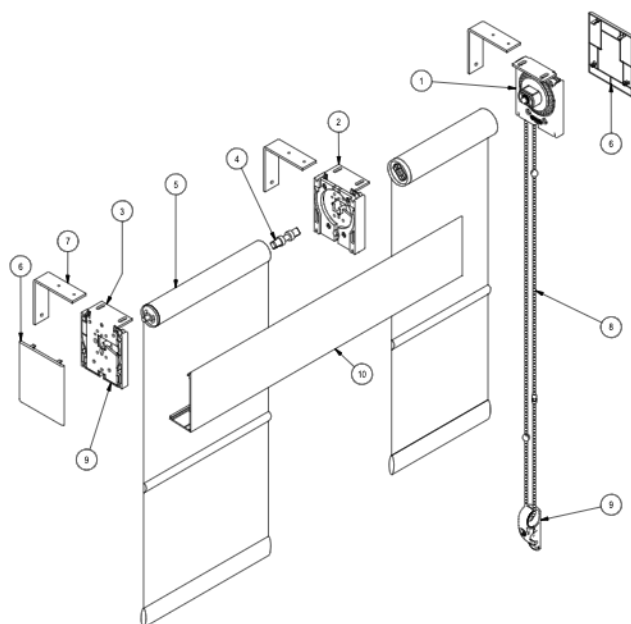


DoubleShade Bracket #15, 16



Mecho/7

Hardware Overview - Standard

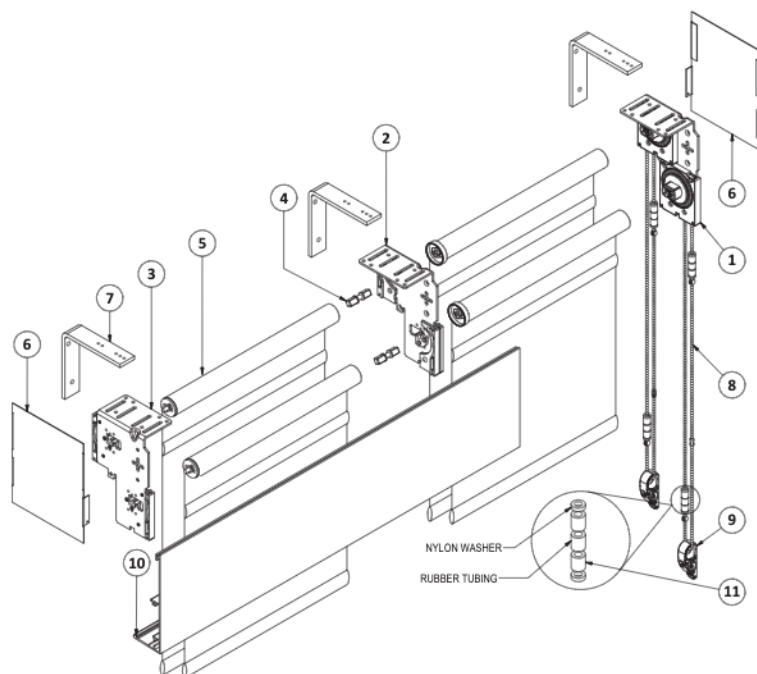


##	MechoShade Color Options:
AL	Alabaster
BK	Black
CA	Clear Anodized
CW	Colonial White
GR	Grey
QB	Quaker Bronze
WH	White
Note: Some colors are not available for all components	

Component	Item #	MechoShade Stock Numbers		
		Mecho/7 Standard	Mecho/7 Pocket	Mecho/7 Extended
Drive end Bracket	1	UBCD-6365-DS-##	UBCD-6435-DS-##	UBED-6475-DS-##
Center support Bracket for 1-1/2 in. tube	2	UCUN-3036-DS-##	UCSA-6435-DS-##	UCSA-6475-DS-##
Center support Bracket for larger tubes		EOCA-2336-SI-##	EASC-2275-SI-##	EASC-2247-SI-##
Idle end Bracket, no LAM	3	UBCU-3036-DS-##	UBCU-6435-DS-##	UBCU-6475-DS-##
Idle end Bracket, with LAM Right		UBLA-6481-RT-##	UBLA-6482-RT-##	UBLA-6483-RT-##
Idle end Bracket, with LAM Left		UBLA-6481-LT-##	UBLA-6482-LT-##	UBLA-6483-LT-##
Idle end Bracket, with XHD LAM Right		M6I-R001-AS-##	M6PI-R001-AS-##	M6EI-R001-AS-##
Idle end Bracket, with XHD LAM Left		M6I-L001-AS-##	M6PI-L001-AS-##	M6EI-L001-AS-##
Multi-band coupler for 1-1/2 in. tube	4	MCOX-05ST-BR-ML		
Heavy-duty adjustable multi-band coupler for larger tubes		ECOX-02621-AS-ZA		
Shade Band Assembly	5	Various Components		
End Cap Square, Ceiling Mount	6	ECTH-1011-KT-##	N/A	ECTH-1013-KT-##
End Cap Square, Wall Mount		ECTH-1012-KT-##	N/A	ECTH-1014-KT-##
End Cap Rounded		ECTH-1002-##-##	N/A	N/A
Wall Angle	7	MBWX 2728-ST-ZP	N/A	EBWX-4041-ST-ZP UBWX-5051-ST-PL
Bead Chain with Bead Stops	8	MCHD-0500-SS-PO + MBST 34RD AL ML		
Bead Chain Retainer	9	GEN4-PCLP-PC-CL		
Fascia, Regular Roll, Square	10	MFTH-RG15-AL-##	N/A	UFTH-4715-AL-##
Fascia, Regular Roll, Rounded		RDTH-1000-AL-##	N/A	N/A
Fascia, Reverse Roll, Square		MFAA-RR15-AL-##	N/A	N/A
Optional Heavy Duty Adjustable Multi-Band Coupler Kit and Install Guide	Not Shown	HXKY-L332-KT-01		

Mecho/7

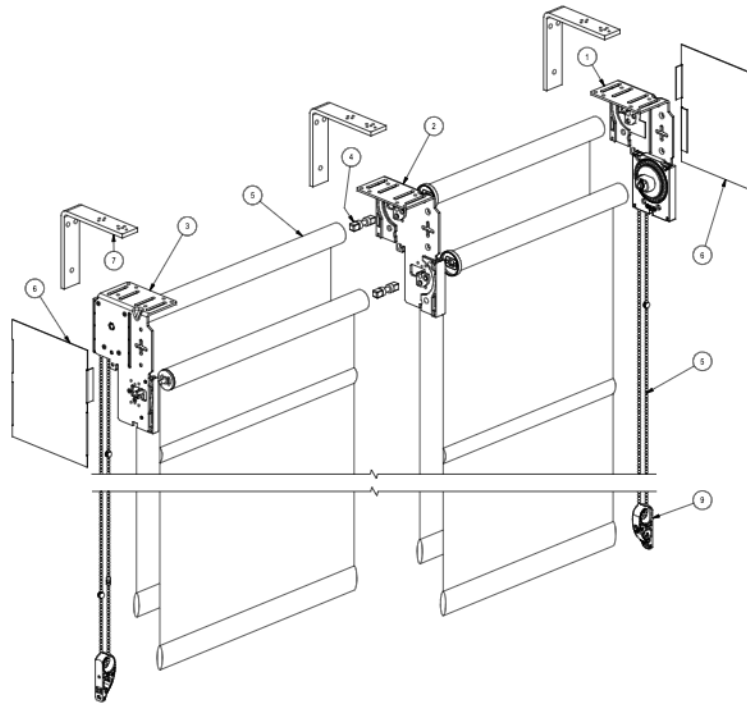
Hardware Overview - Double Shade (Vertical)



Component	Item #	Mecho/7 #15 DoubleShade - Vertical Bracket Stock Numbers
Drive end Bracket, Right	1	M5DB-2001-AS-##
Idle end Bracket, no LAM, Right		M5DB-AS-##
Idle end Bracket, with LAM Right		M5ID-1501-AS-##
Idle end Bracket, with XHD LAM Right		M615-0005-AS-##
Center support Bracket for 1-1/2 in. tube	2	M5DB-2002-AS-##
Center support Bracket for larger tubes		M5ID-1507-AS-##
Drive end Bracket, Left	3	M615-0019-AS-##
Idle end Bracket, no LAM, Left		M5DB-2004-AS-##
Idle end Bracket, with LAM Left		M5ID-1502-AS-##
Idle end Bracket, with XHD LAM Left		M615-0006-AS-##
Multi-band coupler for 1-1/2 in. tube	4	MCOX-05ST-BR-ML
Heavy-duty adjustable multi-band coupler for larger tubes		ECOX-0621-AS-ZA
Shade Band Assembly	5	Various Components
End Cap Square	6	ECTH-1004-KT-##
Wall Angle	7	UWBX-5051-ST-PL
Bead Chain with Bead Stops	8	MCHD-0500-SS-PO + MBST 34RD AL ML
Bead Chain Retainer	9	GEN4-PCLP-PC-CL
Fascia, Regular Roll, Square	10	UFTH-7321-AL-##
Shock Absorber [Not Required for Mecho/7]	11	MSAB-0604-RU-BK
Optional Heavy Duty Adjustable Multi-Band Coupler Kit and Install Guide	Not Shown	HXKY-L332-KT-01

Mecho/7

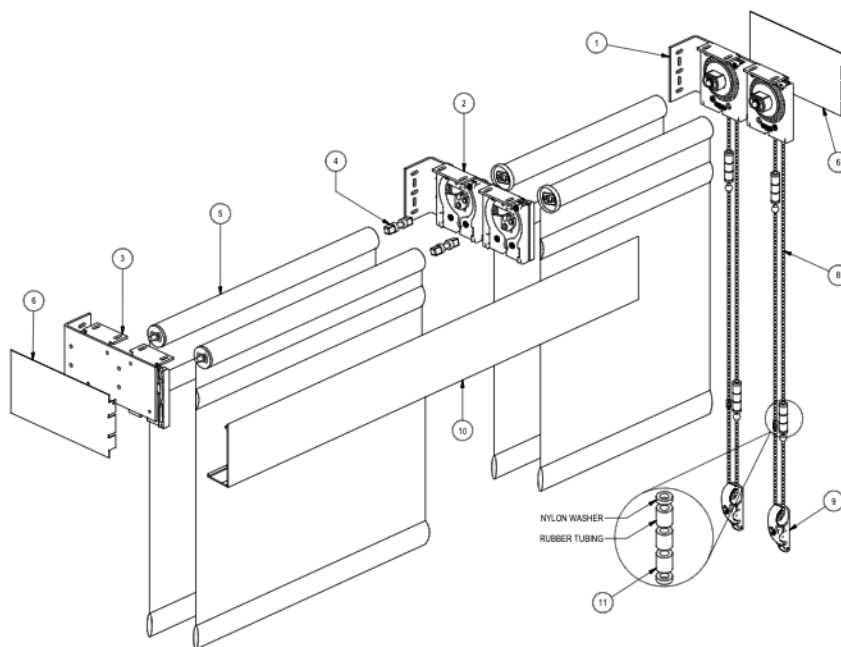
Hardware Overview - Double Shade (Vertical)



Component	Item #	Mecho/7 #16 DoubleShade - Vertical Bracket Stock Numbers
Double Bracket Right, BO - Drive/Solar - Idle, no LAM	1	M5DB-2018-AS-##
Double Bracket Right, BO - Drive/Solar - Idle, with LAM		M51D-1602-AS-##
Double Bracket Right, BO - Drive/Solar - Idle, with XHD LAM		M616-0001-AS-##
Double Bracket Right, BO - Idle, no LAM/Solar - Drive		M5DB-2019-AS-##
Double Bracket Right, BO - Idle, with LAM/Solar - Drive		M51D-1603-AS-##
Double Bracket Right, BO - Idle, with XHD LAM/Solar - Drive		M616-0003-AS-##
Center support Bracket for 1-1/2 in. tube	2	M5DB-2002-AS-##
Center support Bracket for larger tubes		M51D-1507-AS-##
Double Bracket Left, BO - Drive/Solar - Idle, no LAM	3	M5DB-2017-AS-##
Double Bracket Left, BO - Drive/Solar - Idle, with LAM		M51D-1601-AS-##
Double Bracket Left, BO - Drive/Solar - Idle, with XHD LAM		M5DB-2020-AS-##
Double Bracket Left, BO - Idle, no LAM/Solar - Drive		M616-0002-AS-##
Double Bracket Left, BO - Idle, with LAM/Solar - Drive		M51D-1604-AS-##
Double Bracket Left, BO - Idle, with XHD LAM/Solar - Drive		M616-0004-AS-##
Multi-band coupler for 1-1/2 in. tube	4	MCOX-05ST-BR-ML
Heavy-duty adjustable multi-band coupler for larger tubes		ECOX-0621-AS-ZA
Shade Band Assembly	5	Various Components
End Cap Square	6	ECTH-1004-KT-##
Bead Chain with Bead Stops	8	MCHD-0500-SS-PO + MBST 34RD AL ML
Bead Chain Retainer	9	GEN4-PCLP-PC-CL
Fascia, Regular Roll, Square	10	UFTH-7321-AL-##
Optional Heavy Duty Adjustable Multi-Band Coupler Kit and Install Guide	Not Shown	HXKY-L332-KT-01

Mecho/7

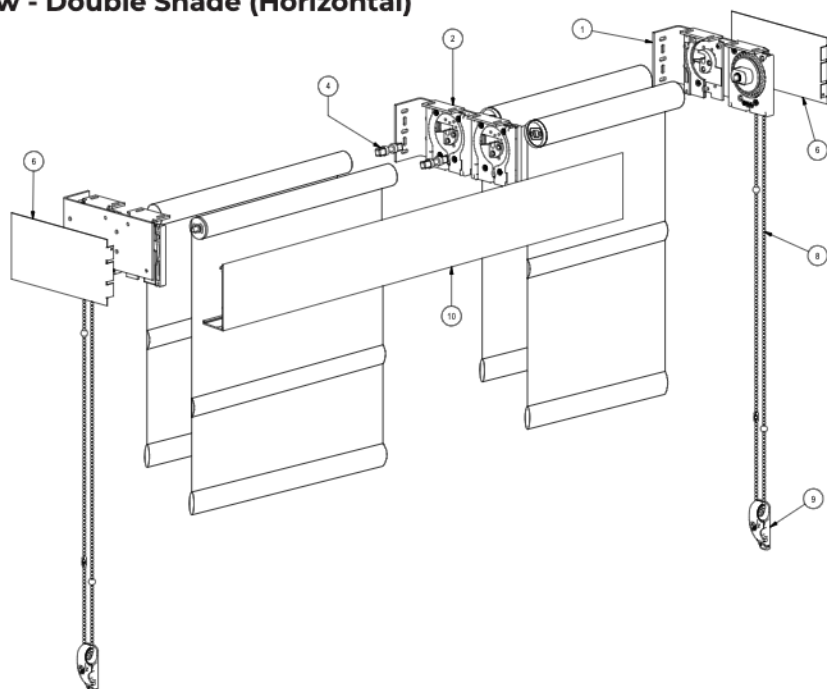
Hardware Overview - Double Shade (Horizontal)



Component	Item #	Mecho/7 #10 DoubleShade - Horizontal Bracket Stock Numbers	
		Standard	Pocket
Drive end Bracket, Right	1	M610-0004-AS-##	M610-0041-AS-##
Drive end Bracket, Left		M610-0037-AS-##	M610-0038-AS-##
Center support Bracket for 1-1/2 in. tube	2	UCSA-6032-DS-##	U5DB-1035-AS-##
Center support Bracket for larger tube		USCA-6032-DS-##	U3CS-DBPK-AS-##
Idle end Bracket, no LAM, Right	3	M610-0041-AS-##	M610-0049-AS-##
Idle end Bracket, no LAM, Left		M610-0045-AS-##	M610-0053-AS-##
Idle end Bracket, with LAM, Right		M610-0043-AS-##	M610-0052-AS-##
Idle end Bracket, no LAM, Left		M610-0047-AS-##	M610-0056-AS-##
Idle end Bracket, with XHD LAM, Right		M610-0004-AS-##	M610-0010-AS-##
Idle end Bracket, with XHD LAM, Left		M610-0001-AS-##	M610-0007-AS-##
Multi-band coupler for 1-1/2 in. tube	4	MCOX-05ST-BR-ML	
Heavy-duty adjustable multi-band coupler for larger tubes		ECOX-0621-AS-ZA	
Shade Band Assembly	5	Various Components	
End Cap Square	6	ECTH-1004-KT-##	N/A
Wall Angle	7	N/A	N/A
Bead Chain with Bead Stops	8	MCHD-0500-SS-PO + MBST 34RD AL ML	
Bead Chain Retainer	9	GEN4-PCLP-PC-CL	
Fascia, Regular Roll, Square	10	MFTH-RG15-AL-##	N/A
Fascia, Regular Roll, Rounded		RDTH-1000-AL-##	N/A
Fascia, Reverse Roll, Square		MFAA-RR15-AL-##	N/A
Shock Absorber [Not Required for Mecho/7]	11	MSAB-0604-RU-BK	
Optional Heavy Duty Adjustable Multi-Band Coupler Kit and Install Guide	Not Shown	HXKY-L332-KT-01	

Mecho/7

Hardware Overview - Double Shade (Horizontal)

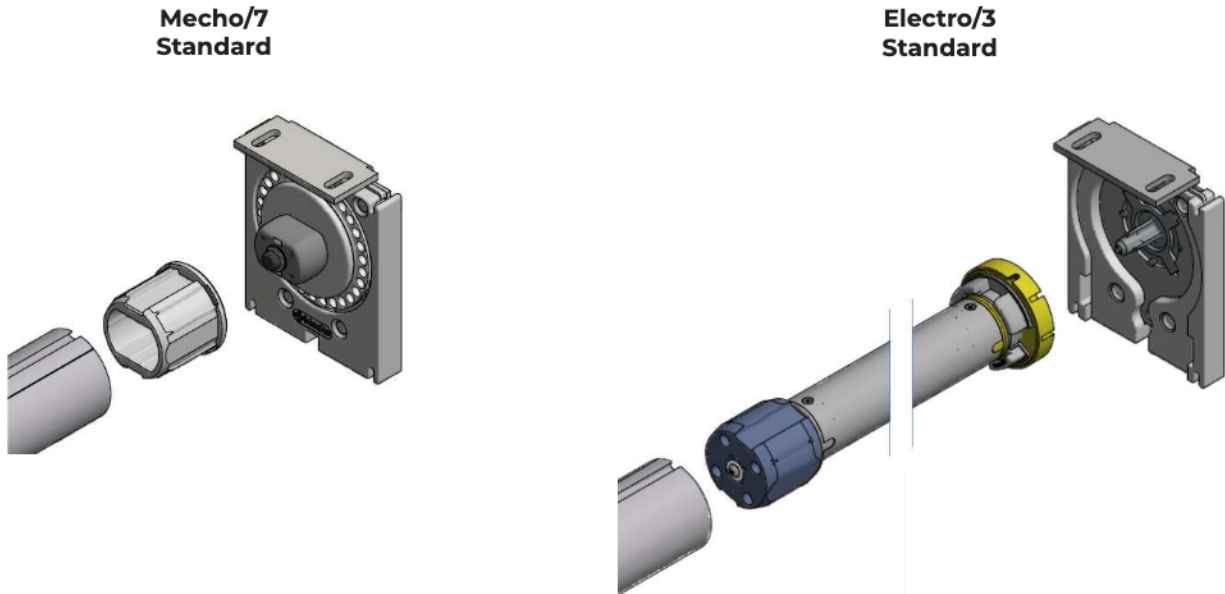


Component	Item #	Mecho/7 #11 DoubleShade - Horizontal Bracket Stock Numbers	
		Standard	Pocket
Double Bracket Right, BO - Drive/Solar - Idle, no LAM	1	M611-0017-AS-##	M611-0021-AS-##
Double Bracket Right, BO - Drive/Solar - Idle, with LAM		M611-0009-AS-##	M611-0015-AS-##
Double Bracket Right, BO - Drive/Solar - Idle, with XHD LAM		M611-0003-AS-##	M611-0005-AS-##
Double Bracket Right, BO - Idle, no LAM/Solar - Drive		M611-0018-AS-##	M611-0022-AS-##
Double Bracket Right, BO - Idle, with LAM/Solar - Drive		M611-0010-AS-##	M611-0014-AS-##
Double Bracket Right, BO - Idle, with XHD LAM/Solar - Drive		M611-0004-AS-##	M611-0008-AS-##
Center support Bracket for 1-1/2 in. tube	2	USCA-6032-DS-##	U5DB-1035-AS-##
Center support Bracket for larger tubes		USCA-6032-DS-##	U3CS-DBPK-AS-##
Double Bracket Left, BO - Drive/Solar - Idle, no LAM	3	M611-0019-AS-##	M611-0023-AS-##
Double Bracket Left, BO - Drive/Solar - Idle, with LAM		M611-0011-AS-##	M611-0013-AS-##
Double Bracket Left, BO - Drive/Solar - Idle, with XHD LAM		M611-0001-AS-##	M611-0007-AS-##
Double Bracket Left, BO - Idle, no LAM/Solar - Drive		M611-0020-AS-##	M611-0024-AS-##
Double Bracket Left, BO - Idle, with LAM/Solar - Drive		M611-0012-AS-##	M611-0016-AS-##
Double Bracket Left, BO - Idle, with XHD LAM/Solar - Drive		M611-0002-AS-##	M611-0006-AS-##
Multi-band coupler for 1-1/2 in. tube	4	MCOX-05ST-BR-ML	
Heavy-duty adjustable multi-band coupler for larger tubes		ECOX-0621-AS-ZA	
Shade Band Assembly	5	Various Components	
End Cap Square	6	ECTH-1004-KT-##	N/A
Bead Chain with Bead Stops	8	MCHD-0500-SS-PO + MBST 34RD AL ML	
Bead Chain Retainer	9	GEN4-PCLP-PC-CL	
Fascia, Regular Roll, Square	10	MFTH-RG15-AL-##	N/A
Fascia, Regular Roll, Rounded		RDTH-1000-AL-##	N/A
Fascia, Reverse Roll, Square		MFAA-RR15-AL-##	N/A
Optional Heavy Duty Adjustable Multi-Band Coupler Kit and Install Guide	Not Shown	HXKY-L332-KT-01	

Mecho/7

Manual to Motorization Upgrade

- Mecho/7 installations that employ the 1.56" tube and greater, there is an opportunity to upgrade to motorization as budget and needs support.
- Mecho/7 manual shade brackets and Electro/3 motorized shade brackets employ a common cross section and footprint to offer drop-in replacement using kits that ensure fabric can be re-used on the motorized shade assembly.
- Motor options include motors with embedded batteries and wireless RF communications to prevent the need for added power or communication wiring.



Warranty & Technical Support

Mecho's warranty ensures its products against defects in materials and workmanship up to 25 years. For complete warranty information, contact your Mecho Representative or find it at <https://www.mechoshade.com/warranty>.

MechoShade, Inc.
www.mechoshade.com

T: +1 (718) 729-2020, ext. 2006
E: techsupport@mechoshade.com

MechoShade reserves the right to make improvements or changes in its products without prior notice. However, every attempt is made to ensure the information herein is accurate and up to date. Verify with MechoShade to confirm the product availability, latest specifications, and suitability for your application.



(718) 729-2020
mechoshade.com