



# Malvern



**500**  
**Scotswood**  
PR: W199 x L150cm  
PTS: W16.7 x L150cm



**750**  
**Coleridge**  
PR: W199 x L150cm  
PTS: W16.7 x L150cm



**330**  
**Sheffield**  
PR: W99.5 x L150cm



**720**  
**Longridge**  
PR: W99.5 x L150cm



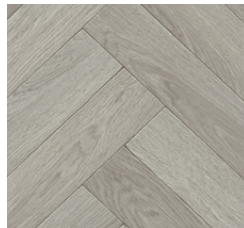
**320**  
**Kensington**  
PR: W199 x L150cm  
PTS: W20 x L150cm



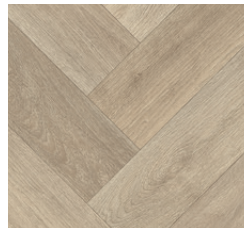
**740**  
**Brentwood**  
PR: W199 x L150cm  
PTS: W20 x L150cm



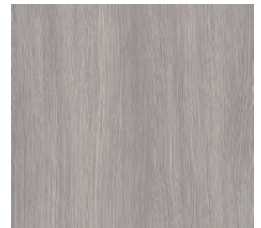
**340**  
**Sherwood**  
PR: W100 x L100cm  
PTS: W16.6 x L100cm



**710**  
**Rockwood**  
PR: W199 x L100cm  
PTS: W9 x L45.5cm



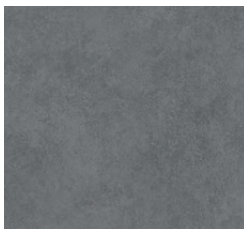
**310**  
**Avonlea**  
PR: W199 x L100cm  
PTS: W11.80 x L47.2cm



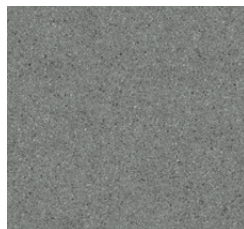
**780**  
**Riversleigh**  
PR: W100 x L100cm  
Reverse Lay



**700**  
**Whitecliffs**  
PR: W99.5 x L100cm  
Reverse Lay



**770**  
**Ashworth**  
PR: W99.5 x L100cm  
Reverse Lay



**760**  
**Braemar**  
PR: W100 x L100cm  
Reverse Lay



**520**  
**Whitstone**  
PR: W100 x L100cm  
Reverse Lay



**180**  
**Greystone**  
PR: W100 x L100cm  
Reverse Lay



**790**  
**Orwell**  
PR: W100 x L100cm  
Reverse Lay



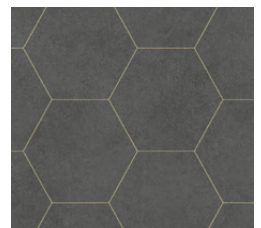
**110**  
**Valetta**  
PR: W99.5 x L100cm  
PTS: W33.3 x L33.3cm



**730**  
**Keystone**  
PR: W99.5 x L100cm  
PTS: W33.3 x L33.3cm



**250**  
**Shannon**  
PR: W99.5 x L100cm



**290**  
**Ashlyn**  
PR: W99.5 x L100cm  
PTS: W22 x L20cm

While all care is taken, product images may vary in colour due to possible printing process variations. Images are to be used as a guide only to give an idea of the colour and nuances of the pattern, but are not fully representative of the variations among the planks (which reflects the natural product which inspired the design). For a representative view of the surface structure and variations within the design, take a look at the big samples on display and ask your retailer for more advice. \*Subject to proper installation and maintenance.

# Malvern

Malvern brings together high design interior styles combined with an extremely durable wear layer. Malvern's heavy duty residential rating dictates confidence with a floor that will handle the very busiest of home environments combined with an easy clean waterproof surface. Its super compact backing gives the product premium strength and wear resistance. Malvern sets a new benchmark in natural look Vinyl floors for your home, allowing you to create a floor that looks and feels just like the real thing, perfectly capturing the nuances of genuine wood, concrete and stone finishes.

## Technical Data

<b>Type</b>	Heterogeneous Vinyl Sheet	<b>Wear Layer Treatment</b>	Natural Feel
<b>Thickness</b>	2.2mm	<b>PUR Treatment</b>	HyperGuard+
<b>Wear Layer</b>	0.4mm	<b>Pattern Repeat</b>	Please refer to swatch images
<b>Dimensions</b>	30m (L) x 2m (W)	<b>Installation Method</b>	Direct Stick Please refer to GH website for further details
<b>Roll Size</b>	30mt (roll sizes can vary)		
<b>Colours</b>	20		

## Performance

<b>Classification</b>	23, 32	EN ISO 10874
<b>Dimensional Stability</b>	<0,10% (norm ≤ 0,40%)	EN ISO 23999
<b>Abrasion Rating</b>	Type I	ISO 10582
<b>Residual Indentation</b>	0,13 mm (norm ≤ 0,20 mm)	EN ISO 24343-1
<b>Furniture Leg</b>	Very good	EN ISO 16581
<b>Castor Chair</b>	Very good	EN ISO 4918
<b>Curl Resistance to Heat</b>	≤ 8 mm	EN ISO 23999
<b>Thermal Conductivity</b>	0,25 W/(m.K) 0,0195 (m2.K/W)	EN ISO 10456 EN ISO 12664
<b>Acoustic Insulation</b>	ΔLw 13 dB	EN ISO 717-2
<b>Light Fastness</b>	6-7	ISO 105B02
<b>Chemical Resistance</b>	Very Good	EN ISO 26987
<b>Electrical Propensity</b>	109 Ohm ≤ 2kV (antistatic)	EN ISO 10965 EN 1815
<b>Fire Classification</b>	Bfl-S1	EN 13501
<b>Slip Resistance</b>	DS R10	EN 13893 DIN 51130
<b>Underfloor Heating</b>	Suitable	EN 12524

## Sustainability

<b>VOC Rating</b>	CETEC Compliant for VOC Emission Rate Limits
<b>Indoor air quality</b>	LOW VOC

