



VENTANA  
SELECT

## Ventana Select™ Superior smart-slide\*

*The new generation of sliding doors*



*Developed for smooth, secure and easy operation.*

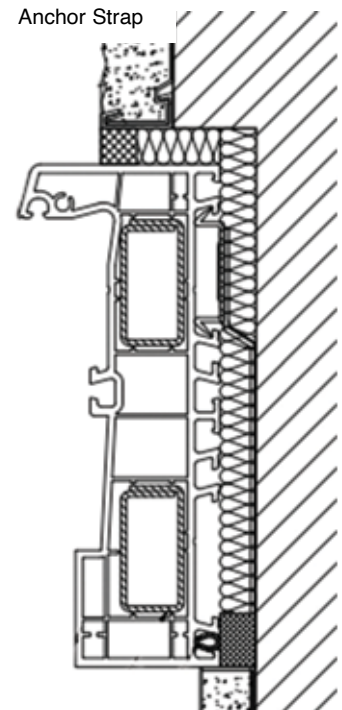
- 140 mm frame or 5.5 inches depth
- Dual pane and triple pane available with US NFRC U-value rating of .28 dual pane and .18 triple pane
- Modern classic-line design
- Concealed hardware technology
- Selection of opening mechanisms: schema A + C (2 panel + 4 panel)
- Available in numerous decor designs



# VENTANA SELECT

Large glass surfaces create generously dimensioned sliding doors that open up to bring the garden into the living space. The smart-slide\* can be manufactured up to approximately 18 ft x 8 ft (5.486 m x 2.438 m).

Maximum width of the operating panel is 60" (1.524 m). The locking mechanism for the self-closing sash slides into the frame with a soft motion, making the door very simple and so easy to operate.



## Less Maintenance

Outstanding innovation helped create the very stable hardware used in this door. Reduced maintenance and a sophisticated mechanism simplify the hardware technology.

## Outstanding Sealing

The innovative locking mechanism and high-quality sealing surfaces with no brushes provide unequaled security. Additional locking points offer outstanding sealing and even more security. As a result, the smart-slide achieves extremely good sealing performance against air, wind and driving rain. (Test No. LC-PG50 for 2-panel door, 96 x 84 inches.)

## Shorter Production Time

Only one sash is required because the frame is welded on all sides. The fixed part can be installed directly into the frame using a glazing bead.



\*smart-slide is a trademark of aluplast GmbH

## Ventana USA

6001 Enterprise Drive • Export PA 15632-8969

P: 724.325.3400 • F: 724.327.4540

Ventana-USA.com • eMail: Information@VentanaPa.com