

Garden Window Deglazing/Glazing Procedure



VENTANA USA™

6001 Enterprise Drive T: 724.325.3400
Export PA 15632-8969 F: 724.327.4540

Bead Removal:

1. Remove the glazing bead using a 1/2-inch wood chisel or equivalent approximately 2 inches from an end. Start by inserting the tool between the glazing bead and frame, pushing inward, and prying upward.
2. Once the glazing bead is lifted in the corner, work your way down the entire length of the bead until it lifts out.
3. *Mark each piece of glazing bead so it can be re-installed in the same location!*
4. Repeat the same process until all the glazing bead is removed from the IG being worked on.

IG Removal:

1. Insert a deglazing tool between the interior surface of the IG and the interior vinyl wall.
2. Carefully cut around the entire interior surface to separate the IG. Several attempts may be necessary.
3. **For the Slope only:** Once the bead is removed and the IG is separated from the inside, run a razor knife along the exterior of the IG between the edge of the glass and vinyl wall.
4. Remove the IG by pushing from the inside, forward and out.

Preparation for Replacement IG:

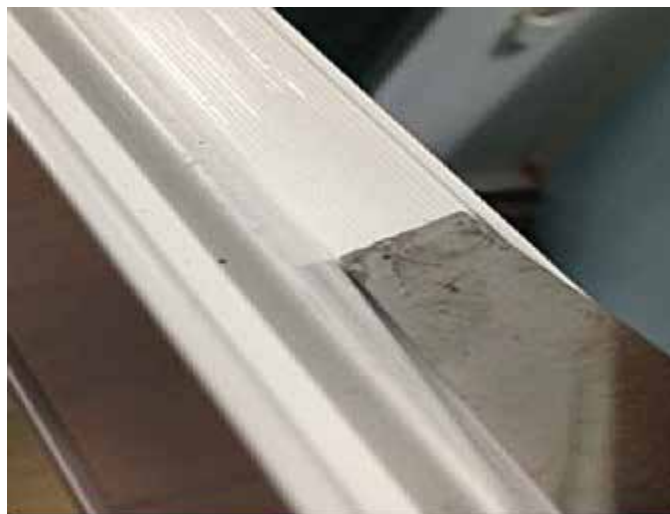
1. Once the IG is removed, clean the glazing leg using a 1/2-inch chisel or equivalent. Scrape all residual silicone from the glazing leg.
2. Clean out any debris in the interior weep holes.



Bead removal



Deglazing tool



Clean the glazing leg

Garden Window Deglazing/Glazing Procedure



VENTANA USA™

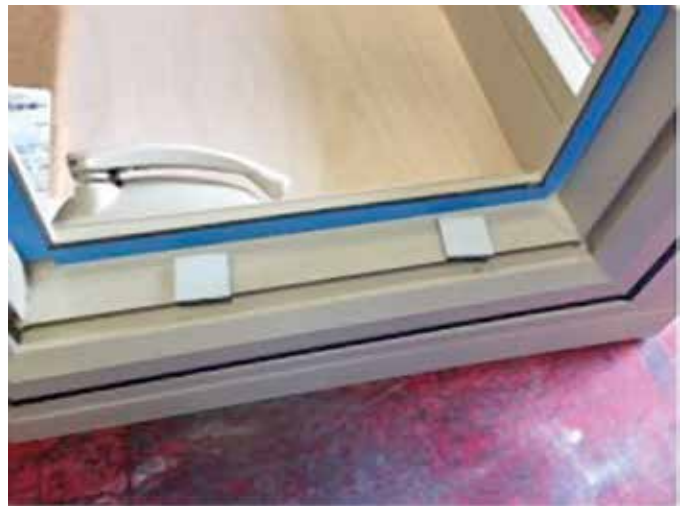
6001 Enterprise Drive T: 724.325.3400
Export PA 15632-8969 F: 724.327.4540

IG Replacement:

1. After the opening is properly cleaned and prepared, begin by applying a 1/4-inch bead of **clear** silicone along the perimeter in the center of the glazing leg. Ensure that there are no gaps in the silicone bead that is applied.
2. **Front and Slope IGs** are the only two IGs to be silicone glazed.
3. The side vents (traps) receive 1/8 x 1/2-inch glazing tape in the center of the glazing leg with a small bead of clear silicone at the tape joints.
4. Place 1/8-inch setting block along the sill.
5. *Take care to not block weep holes!*
6. Peel back the plastic film on the glazing tape in the traps approximately 4 inches at each end and fold at a 90-degree angle.
7. Apply a small bead of caulk at the tape joint.
8. Place the IG into the opening and press firmly to set the IG in position.
9. *Be sure the spacer is not visible in the sightline!*
10. Once the IG is set on the traps, peel the plastic film from the tape.

Bead Replacement:

1. *Snap in the pieces of glazing bead in the order they were removed.* Start at one end by pressing firmly into the track and using a soft-faced hammer to snap into position working your way down the entire length.
2. Once the entire glazing bead is installed apply a small bead of **White** or **Tan** silicone in the corners of the bead.
3. Clean any excess caulk from the inside of the unit.



IG Replacement