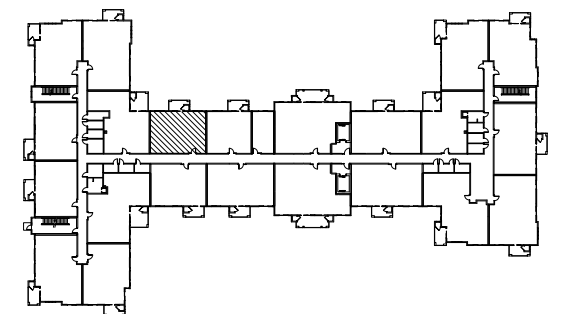


# Gillingham - Rev

*1,094 square feet  
2 bedroom, 1.5 bath*

1st, 2nd & 3rd Floors



Scale: 3/16"=1'-0"

Unit plans subject to change without notice. Rev: 05-05-2023  
 \* First floor homes may have a patio in lieu of a deck  
 \* Plank flooring to change direction without notice.

To learn more, call:  
**(720)523-1223**