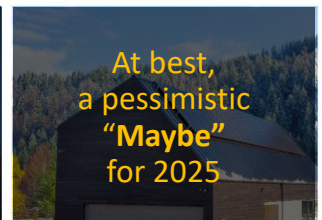


1



2

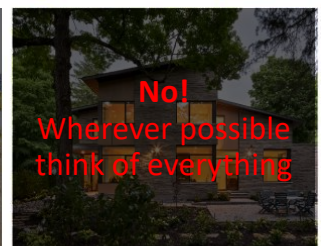


Future codes and climate targets

- First forward-looking premise codes (EE tiers)
- Plan may be to incorporate the effect of GHGs
- Update on future-projecting climatic data in 2025
- Local risk data for resilience and extreme climate events not available but critical
- “Code is not a manual”
- Current code cycle is extremely short (18 months)
- National Codes governance model is changing
- Alterations to Existing Buildings for Energy huge task

3

3



4



Climate actions in sequence?

Cross-Implications

- Energy efficiency beyond the middle tiers may give us diminishing returns on GHG reductions
- Resilience should not be the last thought, but the first
- Not addressing resilience may waste a lot of 'carbon effort'
- Tornado resilience may not be compatible with substituting OSB sheathing for rigid foam

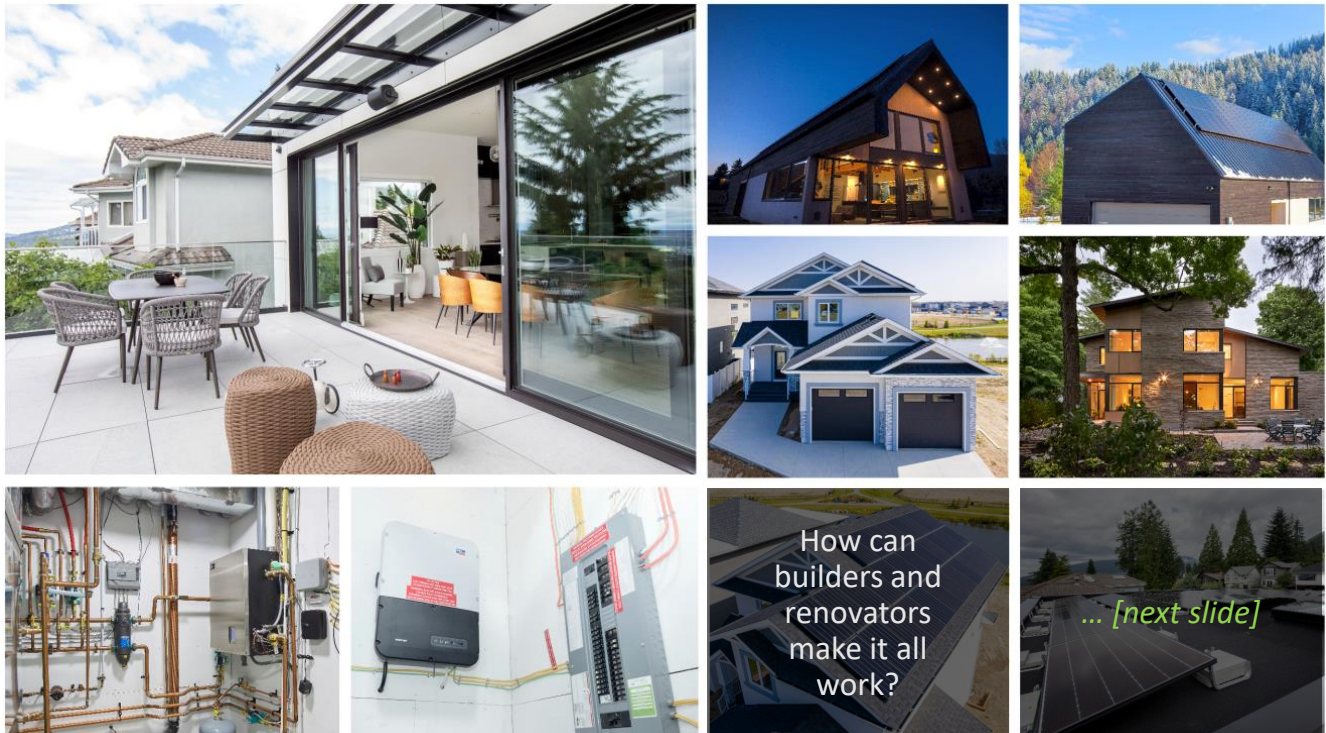
Affordability

- limited resources (\$\$\$) to compete for all societal goals – incl. accessibility
- "Art of the possible" by everyone – don't lose the 99%

Try to build it all in the first time – find the sweet spot

5

5



6



7



Scale Fast

Widely share **low-risk, low-cost** sustainable solutions

Integrate single-lens thinking into holistic strategy

Builder-quality guides **scale solutions nationally**

Coordinated Gov'ts create powerful incentives

Expand supply chains a **support for innovation**

Teach others how to **compete on ideas**

Innovate the process – think modular*

Dare to try new things



8

