



Intro to 5x5: Leading AI-powered analytics for industrial infrastructure.

January 2022

-
-
-
- buildings
- monopoles
- self-supports
- drilling rigs
- cranes
- railyards
- pipe yards
- shipyards
- storage tanks
- utilities
- fire towers
- lighting masts
- rooftops
- solar arrays
- radar sites
- repeaters
- control towers
- bridges
- & more

Industrial infrastructure is critical to companies,
people and nations worldwide.

5x5 helps infrastructure speak its truth – in every
dimension – by scanning structures with flying robots,
computer vision and analytics powered by artificial
intelligence.

Organizations gain easy access to reliable, accurate
data vital to digitally transform asset management.

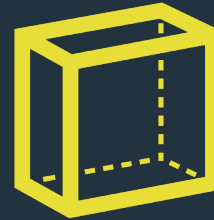
5x5 Process



We start by planning the path for digital transformation including data collection and plans data delivery in service of your various roles and requirements.



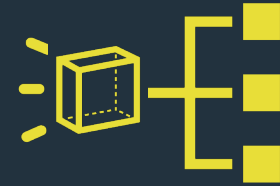
Next: on-site fieldwork. Actual structural data is collected by trained professionals (usually with drones).



A proprietary cloud-based compute engine turns that data into a 3D model ... but we don't stop there.



4D+AI makes that model into an intelligent digital twin with visual, numeric and custom tag properties.

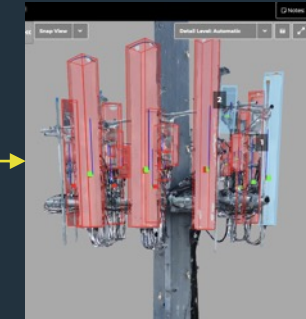


These data can then be extracted from the twin and made available on-demand to other systems & software that a company already uses.

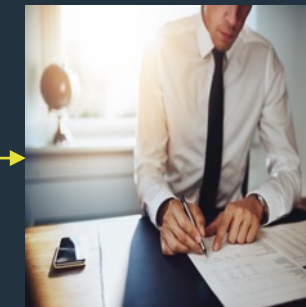
5x5 Delivers



Digital twin
visualization



Automated
analytics



Data exports
& reporting

Think about 5x5 for:

Infrastructure technology projects

Structural asset management

Regulatory compliance

Architectural, engineering and construction work

Disaster impact & recovery

Application Diversity



Industrial Sites



Military Assets



Remote Facilities



Landmarks



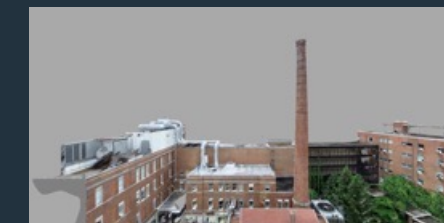
Communications
Infrastructure



Historical Sites



Rooftop Equipment



Industrial & Office
Buildings



Thank you.

www.5x5.ai