

2020 SANTA MONICA BLVD.

Santa Monica, California



CAROL ROTH

PRESIDENT

COMMERCIAL REALTY PARTNERS

310.285.0800

CRoth@CommercialRealtyPartners.com

License #: 01344182

HADLEY ROTH

SR. VICE PRESIDENT

COMMERCIAL REALTY PARTNERS

310.285.0800

HRoth@CommercialRealtyPartners.com

License #: 01796217

Although all information furnished regarding the property is from sources deemed reliable, such information has not been verified and no express representation is made nor is any to be implied as to the accuracy thereof and it is submitted subject to errors, omissions, change of price, rental or other conditions, or withdrawal without notice.

LEASING OPPORTUNITY

2020

SANTA MONICA BLVD

Santa Monica, California

Availability: Suite 100 (divisible): See floor plans

- Entire Suite: 7,342 RSF
- Divided Option A: 2,637 RSF
- Divided Option B: 4,705 RSF

Suite 530: 3,463 RSF

Asking Rate: Negotiable

Term: 5-10 Years

Parking: Ample on-site parking for tenants and visitors



CAROL ROTH

PRESIDENT

COMMERCIAL REALTY PARTNERS

310.285.0800

CRoth@CommercialRealtyPartners.com

License #: 01344182

HADLEY ROTH

SR. VICE PRESIDENT

COMMERCIAL REALTY PARTNERS

310.285.0800

HRoth@CommercialRealtyPartners.com

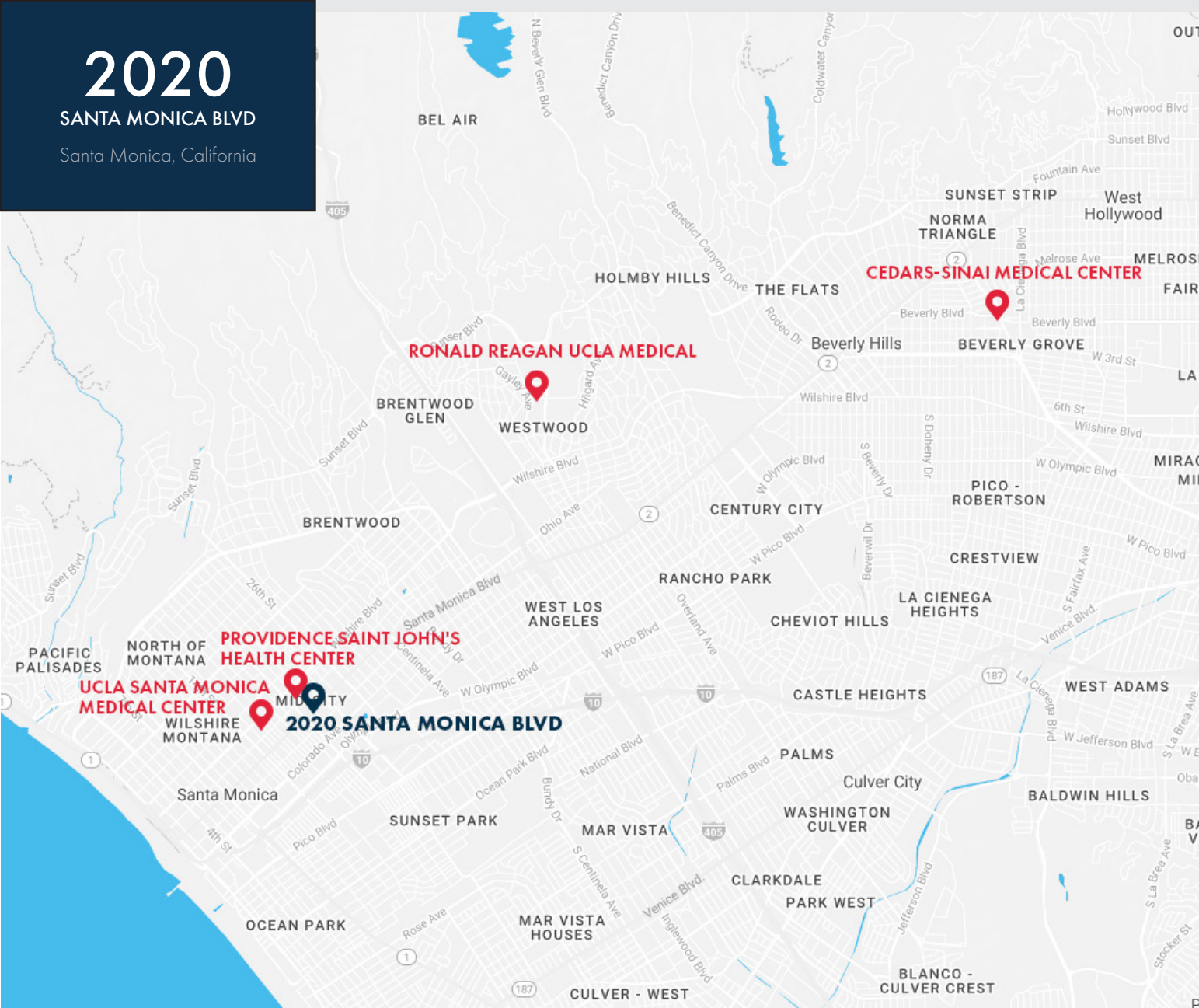
License #: 01796217

Although all information furnished regarding the property is from sources deemed reliable, such information has not been verified and no express representation is made nor is any to be implied as to the accuracy thereof and it is submitted subject to errors, omissions, change of price, rental or other conditions, or withdrawal without notice.

2020

SANTA MONICA BLVD

Santa Monica, California



HIGHLIGHTS & AMENITIES

- Ideal medical location in the heart of the Santa Monica medical community with Providence St. John's Health Center located directly across the street and UCLA Santa Monica Medical Center within 1 mile.
- Located in one of Los Angeles County's most amenity rich submarkets.
- Efficient medical suites for lease.
- Full-height windows with exceptional views.
- Excellent mix of on-site specialties.
- Renovated interior, restrooms, and parking areas.
- Professional on-site management.
- Ample on-site parking for tenants and visitors.
- Elevators servicing the parking structure provide convenient access.
- Centrally located with easy access to major east/west streets (Wilshire Boulevard, Olympic Boulevard and Pico Boulevard) and the Santa Monica 10 Freeway.
- Minutes to downtown Santa Monica and the beach.
- Close proximity to Los Angeles International Airport.



CAROL ROTH

PRESIDENT

COMMERCIAL REALTY PARTNERS

310.285.0800

CRoth@CommercialRealtyPartners.com

License #: 01344182

HADLEY ROTH

SR. VICE PRESIDENT

COMMERCIAL REALTY PARTNERS

310.285.0800

HRoth@CommercialRealtyPartners.com

License #: 01796217

Although all information furnished regarding the property is from sources deemed reliable, such information has not been verified and no express representation is made nor is any to be implied as to the accuracy thereof and it is submitted subject to errors, omissions, change of price, rental or other conditions, or withdrawal without notice.

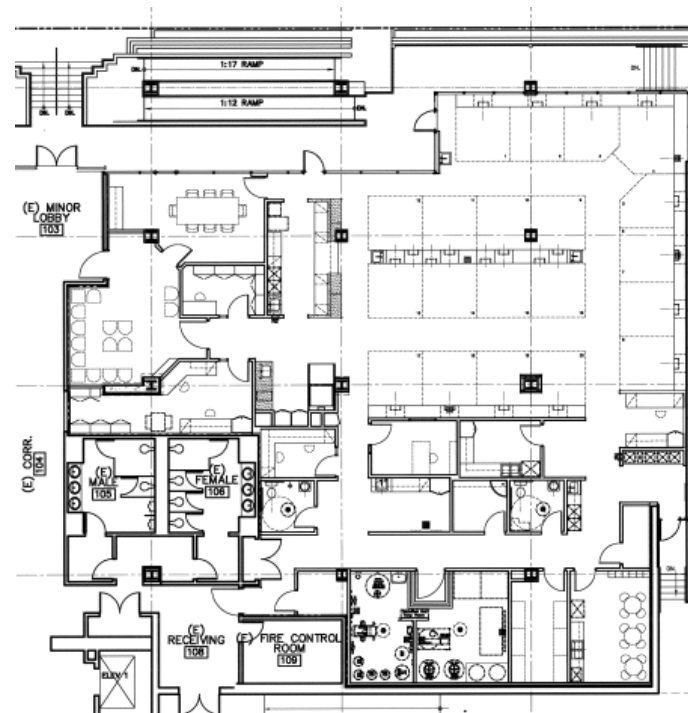
2020

SANTA MONICA BLVD

Santa Monica, California

Suite 100

7,342 RSF



CAROL ROTH

PRESIDENT

COMMERCIAL REALTY PARTNERS

310.285.0800

CRoth@CommercialRealtyPartners.com

License #: 01344182

HADLEY ROTH

SR. VICE PRESIDENT

COMMERCIAL REALTY PARTNERS

310.285.0800

HRoth@CommercialRealtyPartners.com

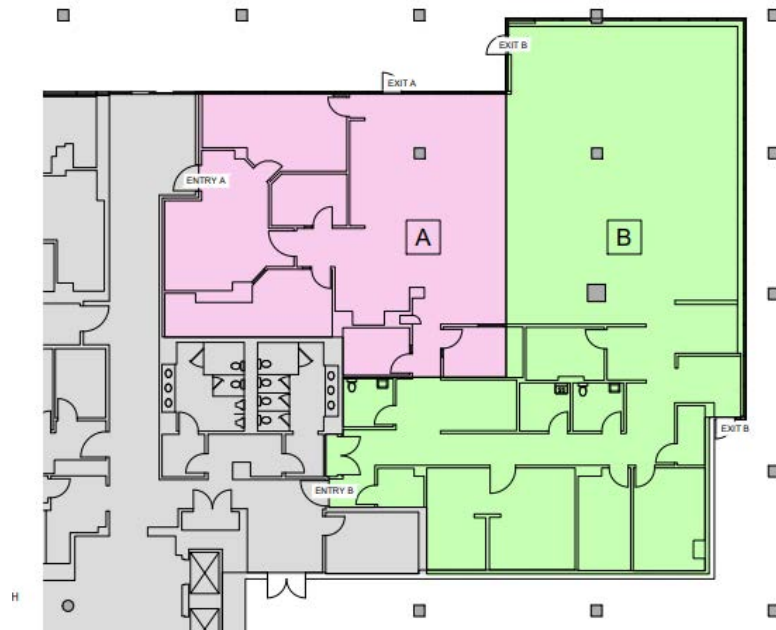
License #: 01796217

Although all information furnished regarding the property is from sources deemed reliable, such information has not been verified and no express representation is made nor is any to be implied as to the accuracy thereof and it is submitted subject to errors, omissions, change of price, rental or other conditions, or withdrawal without notice.

2020

SANTA MONICA BLVD

Santa Monica, California



Suite 100

Suite A: 2,637 RSF



CAROL ROTH

PRESIDENT

COMMERCIAL REALTY PARTNERS

310.285.0800

CRoth@CommercialRealtyPartners.com

License #: 01344182

HADLEY ROTH

SR. VICE PRESIDENT

COMMERCIAL REALTY PARTNERS

310.285.0800

HRoth@CommercialRealtyPartners.com

License #: 01796217

Although all information furnished regarding the property is from sources deemed reliable, such information has not been verified and no express representation is made nor is any to be implied as to the accuracy thereof and it is submitted subject to errors, omissions, change of price, rental or other conditions, or withdrawal without notice.

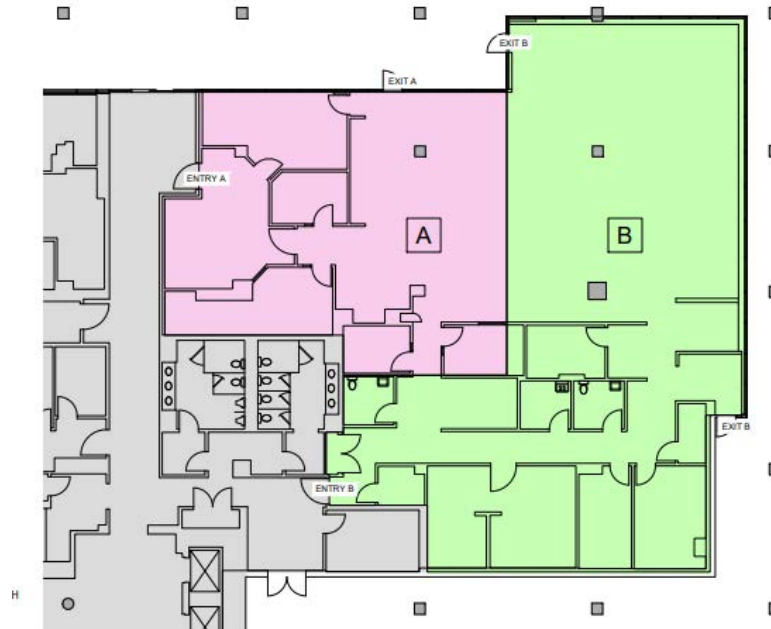
2020

SANTA MONICA BLVD

Santa Monica, California

Suite 100

Suite B: 4,705 RSF



CAROL ROTH

PRESIDENT

COMMERCIAL REALTY PARTNERS

310.285.0800

CRoth@CommercialRealtyPartners.com

License #: 01344182

HADLEY ROTH

SR. VICE PRESIDENT

COMMERCIAL REALTY PARTNERS

310.285.0800

HRoth@CommercialRealtyPartners.com

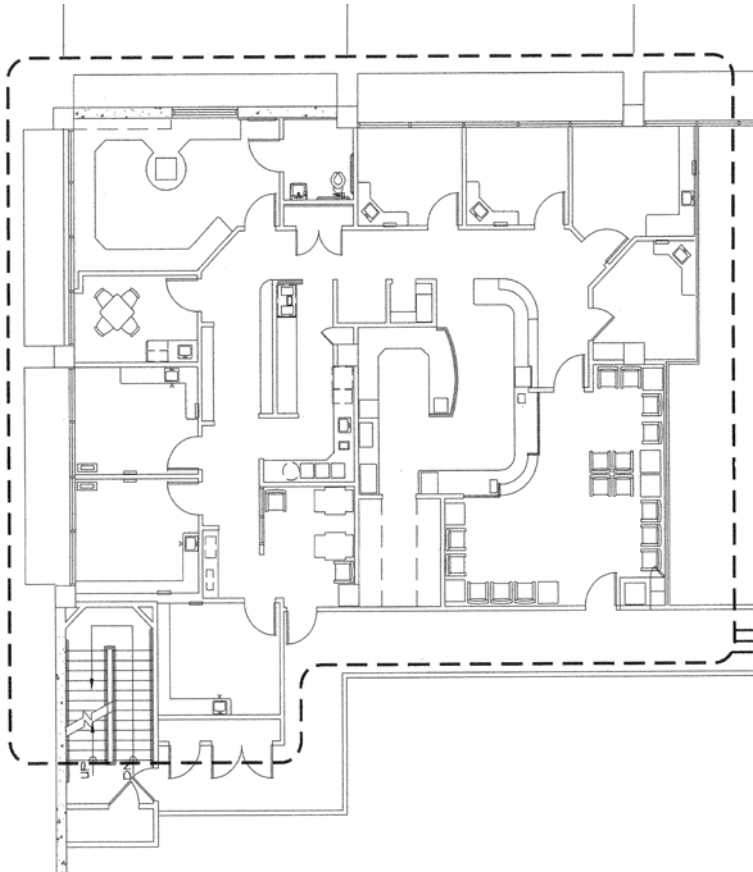
License #: 01796217

Although all information furnished regarding the property is from sources deemed reliable, such information has not been verified and no express representation is made nor is any to be implied as to the accuracy thereof and it is submitted subject to errors, omissions, change of price, rental or other conditions, or withdrawal without notice.

2020

SANTA MONICA BLVD

Santa Monica, California



Suite 530

3,463 RSF



CAROL ROTH

PRESIDENT

COMMERCIAL REALTY PARTNERS

310.285.0800

CRoth@CommercialRealtyPartners.com

License #: 01344182

HADLEY ROTH

SR. VICE PRESIDENT

COMMERCIAL REALTY PARTNERS

310.285.0800

HRoth@CommercialRealtyPartners.com

License #: 01796217

Although all information furnished regarding the property is from sources deemed reliable, such information has not been verified and no express representation is made nor is any to be implied as to the accuracy thereof and it is submitted subject to errors, omissions, change of price, rental or other conditions, or withdrawal without notice.

2020

SANTA MONICA BLVD

Santa Monica, California

Suite 530
Gallery



CAROL ROTH

PRESIDENT

COMMERCIAL REALTY PARTNERS

310.285.0800

CRoth@CommercialRealtyPartners.com

License #: 01344182

HADLEY ROTH

SR. VICE PRESIDENT

COMMERCIAL REALTY PARTNERS

310.285.0800

HRoth@CommercialRealtyPartners.com

License #: 01796217

Although all information furnished regarding the property is from sources deemed reliable, such information has not been verified and no express representation is made nor is any to be implied as to the accuracy thereof and it is submitted subject to errors, omissions, change of price, rental or other conditions, or withdrawal without notice.