

## HOS BAYOU

VESSEL SPECIFICATION SHEET



### 310ES CLASS MULTI PURPOSE SERVICE VESSEL

The HOS Bayou is a U.S.-flagged Jones Act-compliant MPSV. Equipped with two DeepOcean Schilling HD 150 HP work-class remotely operated vehicles (ROVs). The HOS Bayou is capable of performing inspection, maintenance and repair (IMR) of subsea oil installations and construction support in the Gulf of Mexico (GoM). In addition to IMR work, this vessel package is designed to perform a variety of deep-water services, such as SURF installation, decommissioning activities, drilling support and deep-water well intervention projects.

### KEY VESSEL FEATURES

- HIGH SPEC MULTI PURPOSE SERVICE VESSEL
- 2X SCHILLING ROBOTICS HD 150 HP WORK CLASS ROVS
- DYNAMIC POSITIONING CAPABILITY CLASS 2
- MAIN CRANE, 150 MT W/ ACTIVE HEAVE COMPENSATION
- ACCOMMODATION FOR UP TO 70 POB

GENERAL	
SHIP NAME	HOS BAYOU
TYPE	Multi Purpose Service Vessel
OWNER	Hornbeck Offshore
OPERATOR	Hornbeck Offshore
BUILT	2014
IMO	9647681
O.N.	1244577
FLAG	U.S.
CERTIFICATIONS	Oceans-SOLAS, USCG Subchapter I and L
CLASSIFICATION	ABS, DPS-2, A1, ACP, ACCU, AMS, CRC, (E), FFV-I, HELIDK, LOAD-LINE, OSV, UWILD

MAIN CHARACTERISTICS	
LENGTH	302 ft 0 in (92.0 m)
BEAM	64 ft 0 in (19.5 m)
DRAFT MAX.	21 ft 1 in (6.43 m)
DRAFT MIN.	12 ft 8 in (3.86 m)
GROSS	4,885 GT
NET	1,465 NT
CRUISE SPEED	10.0 kts
MAX SPEED	12.0 kts

MAIN EQUIPMENT	
MAIN GENERATORS	4 x Caterpillar 3516C
AUX. GENERATOR	2 x Caterpillar C-32
PROPELLERS	2 x Schottel Azimuthing Z-Drives
BOW THRUSTER	2 x Schottel FPP Tunnel
MAIN GEN. TOTAL POWER	7,300 kW
AUX. GEN TOTAL POWER	1,880 kW
PROPELLER DIAMETER	106 in (2,692 mm)
PROPELLER TOTAL	6,700 hp
HORSEPOWER	
BOW THRUSTERS TOTAL	3,160 hp
HORSEPOWER	
POWER GENERATION	690 V / 60 / 3 PHASE

FUEL CONSUMPTION	
CRUISE SPEED	133 gal/hr (503 l/hr)
FULL SPEED	208 gal/hr (787 l/hr)

DECK CAPABILITES	
MAIN DECK SIZE	145 ft (44.2 m) x 55 ft (16.8 m)
MAIN DECK AREA	7,595 ft² (705.6 m²)
DECK LOAD RATING	1,024 lbs/ft² (5 MT/m²)

HOS BAYOU

## CAPACITIES AND DELIVERY RATES

DEADWEIGHT	5,189 lt (5,273 MT)
DECK CARGO	2,075 LT (2,108 MT)
DRY BULK	14,350 ft3 (406 m3)
SYSTEM PRESSURE	80 psi (5.5 bar)
LIQUID MUD	20,986 bbl (3,337 m3)
LIQUID MUD DISCHARGE RATE	1,000 GPM (227 m3/hr)
METHANOL	1,960 bbl (312 m3)
METHANOL DISCHARGE RATE	250 GPM (57 m3/hr)
POTABLE WATER	62,549 gal (1,015 m3)
WATERMAKER CAP	4,000 USG/day (15 m3/day)
RIG FUEL	268,284 gal (1,015 m3)
FUEL DISCHARGE RATE	750 GPM (170 m3/hr)
RIG WATER	519,162 ga: (1,965 m3)
DISCHARGE RATE	750 GPM (170 m3/hr)
COOLER CAP	600 ft3 (17 m3)
FREEZER CAP	1,000 ft3 (28 m3)
OFF SHIP FIREFIGHTING	2
MONITORS	
TOTAL FLOW RATE	10,586 gal/min (2,406 m3/hr)

## ELECTRONICS

Auto Pilot, C-NAV, CCTV Cameras, Depth Sounder, Speed Log, DGPS w/ AIS, EPIRB, GMDSS "A3", Gyro Compass, Joystick Control, Mag Compass, MAMS/VMS, Navtex, Public Phone System w/loudhailer, SARTs, VHF Radio, VHF Radio (Handheld), Anemometer, X-band Radar, S-band Radar AIS, Cyscan, Radascan, DSDL, SSAS, VSAT

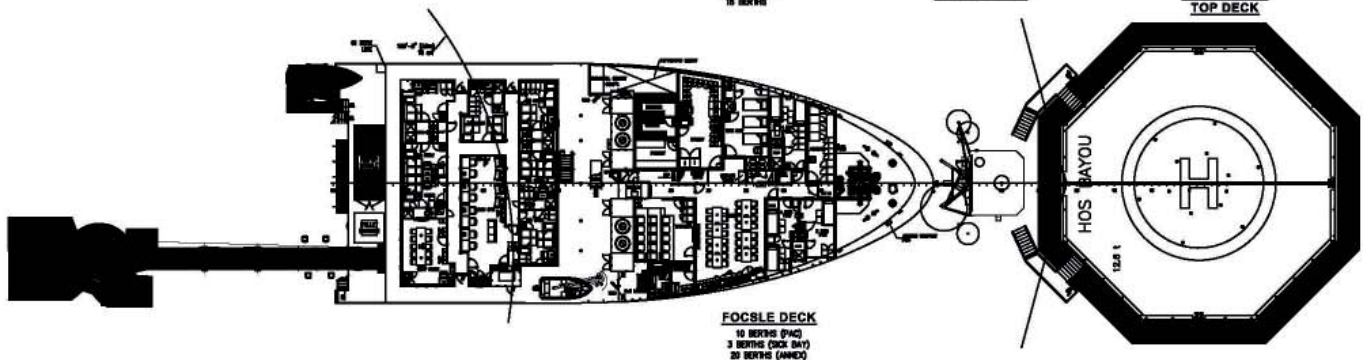
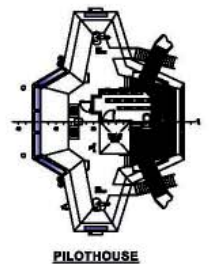
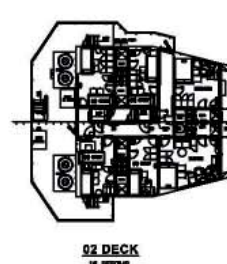
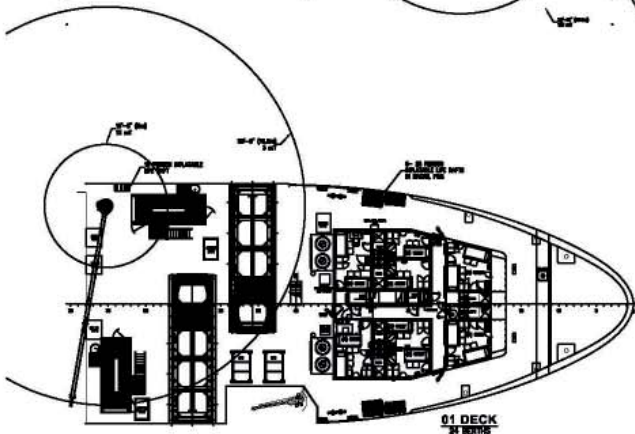
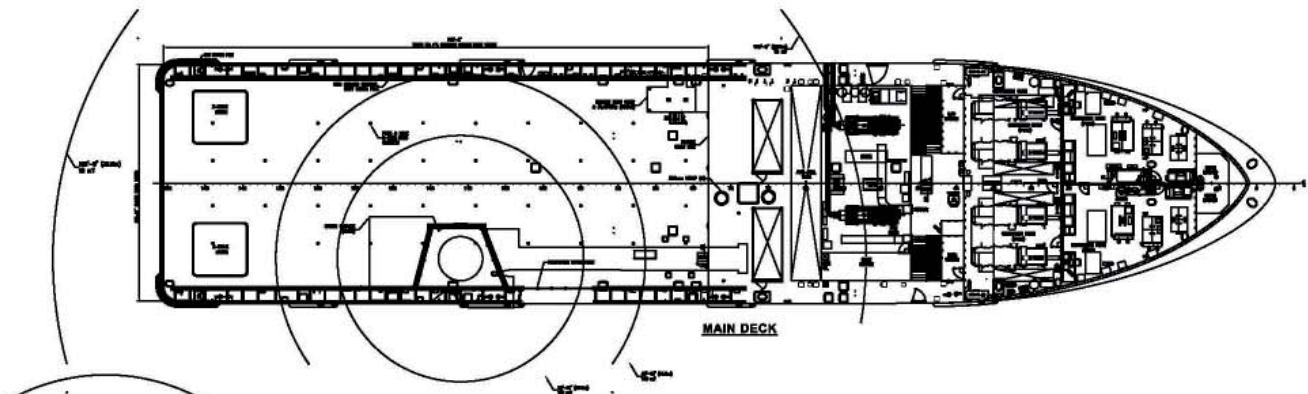
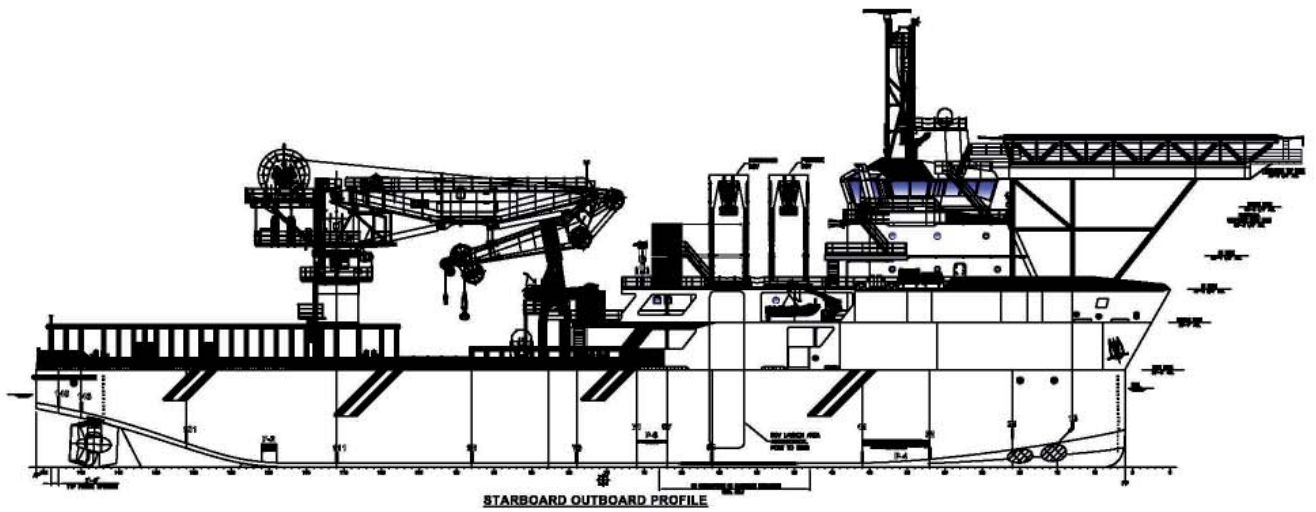
## ACCOMMODATIONS

CABINS	24 Air conditioned/heated rooms
PERSON(S) BERTHING	70

## SPECIAL FEATURES

HELIDECK DIAMETER	73 ft 0 in (22.25 m)
KNUCKLE BOOM CRANE	1 x MCGREGOR KNUCKLE BOOM CRANE W/ ACTIVE HEAVE COMPENSATION, 150 MT
DECK CRANE	1 x APPLETON EB70-53-33
ROV	2 x SCHILLING HD 150 HP WORK CLASS
DP REFERENCE	1 x KNOSBERG HiPAP 500
FAST RESCUE CRAFT	1 x 15 PERSON(s)
ROLL REDUCTION	ANTI-ROLL TANK

# HOS BAYOU



Revision Date 11/05/2020

DeepOcean accepts no responsibility for and disclaims all liability for any errors and/or omissions in this production.

SPECIFICATION SUBJECT TO CHANGE WITHOUT NOTICE.

[www.deepoceangroup.com](http://www.deepoceangroup.com)