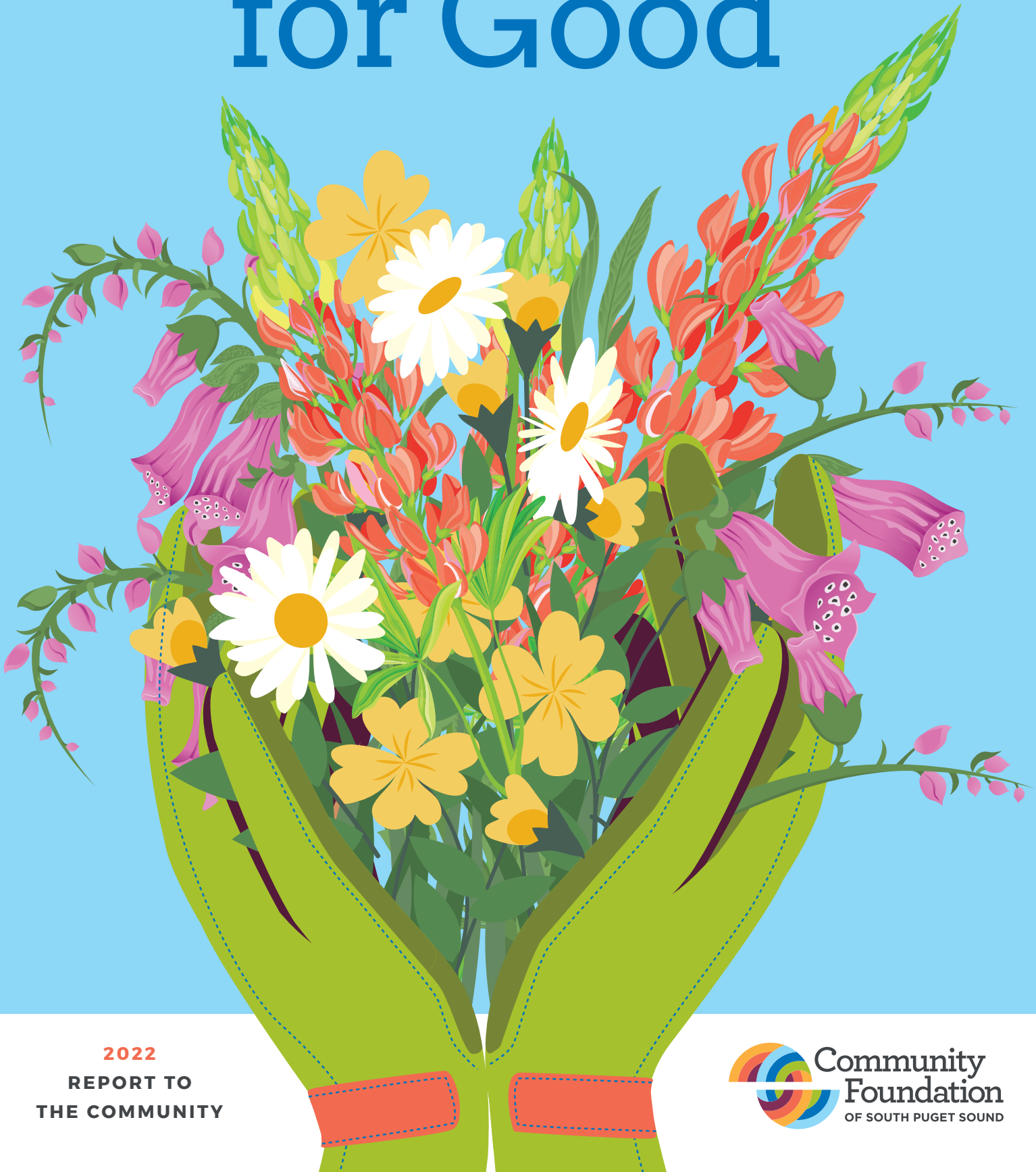


Gathering for Good



2022
**REPORT TO
THE COMMUNITY**



LETTER FROM OUR PRESIDENT & CEO, MINDIE REULE



An Abundance of Gratitude

Many of us arrived in 2022 feeling scattered. For nearly two years, we'd lived in the tension between coming together in care and generosity and being pulled apart by isolation and separation. We needed to gather ourselves.

So, we gathered. Some of our meetings stayed virtual to benefit from the accessibility of being online, but we also found joy in the return of many more in-person events. It was a refreshing change of pace as people all across our communities came together in beautiful ways to boost our region's ability to thrive now and into the future.

At the Community Foundation, we gathered community-based resources to nourish this place we love through our funds, scholarships, and grantmaking. We spent down the last of our Resilience Fund—mobilizing \$1M in recovery funds in 18 months—and finalized our American Rescue Plan Act grantmaking for Thurston County. Through listening sessions, site visits, grant proposals, and broad community input, we continued to learn more about local needs. That learning is inspiring us to keep exploring new ways to strengthen and invest in our community.

A garden in bloom attracts pollinators, and the good we do together is attracting more people to our work. This year, seven community members joined our board, and we welcomed ten new funds, including nonprofit endowments, donor advised funds, and legacy gifts.

Reflecting on the bright bouquet of resources and people committed to the collective wellbeing of our communities, I am filled with gratitude. To everyone who works alongside us and contributes to our region's flourishing—nonprofit staff and volunteers, donors, grant and scholarship reviewers, and community partners—thank you for the many generous ways you continue to gather for good.

We're proud of this work and proud to do it alongside you. Thank you so very much for joining in so everyone can live in fullness and thrive.

Our Impact

\$2.7 M

total in grants made to our communities

\$178,250

in scholarships to 53 students



10 new funds

Increased nonprofit participation



More people made distributions than ever before

through Donor Advised Funds and Retirement Accounts

Moving Forward Together

This year we wrapped up our efforts to get COVID response and recovery funding where it needed to go—into the hands of local nonprofits serving our communities.

Resilience Fund

The Resilience Fund was established by the Community Foundation to address the impacts of COVID-19, bolster our region's long-term efforts to rebuild, respond to emerging opportunities, help nonprofits adapt, and support creative new approaches and partnerships that will benefit our communities well beyond recovery.

The fund was seeded by a generous gift from the Bruno & Evelyne Betti Foundation. Matched by Puget Sound Energy and AllInWA, this gift multiplied during Give Local 2020 as community members pitched in to help raise just over \$1 Million for this fund in less than six months—an incredible feat! In 2021, the Community Foundation was pleased to distribute \$512,000 to 31 nonprofits, and in 2022, the remainder totaling \$488,000, went to an additional 24 nonprofits.

As you can imagine, the discussions held by community reviewers were rich and often difficult; Teresa Loo, who served on the grants committee, shares, "The learning was immense. With every grant review, our understanding grew of how multidimensional our communities and community needs are. It was inspiring to learn about innovative approaches many organizations were taking to support our communities in these unprecedented times."

\$488,000

to 24 organizations in 2022

Thurston Strong Nonprofit Recovery Grants

\$800,000
in ARPA funds

In 2022, we concluded our partnership with Thurston Strong, managing \$800,000 in Thurston County American Rescue Plan Act funds for local nonprofits impacted by COVID-19. The Community Foundation was honored to play a role in ensuring these funds were effectively and equitably distributed in support of our communities. The coordinated effort to get resources where they were most needed strengthened our collective ability to weather the pandemic's impact, and we were grateful to be part of it.

18 new staff
for local nonprofits

Job Champions Network

We had the opportunity to partner with Pacific Mountain Workforce Development in 2022 in support of their Job Champions Network (JCN). This program put another approximately \$1M back into the community and gave a big boost to our local nonprofit sector. Through JCN, 18 local nonprofits received grant funding and other support to hire and mentor unemployed or underemployed workers. This program was a benefit for workers wanting to advance their careers and for local nonprofits in need of more staff capacity.

Community Grants

Strengthening our Lewis, Mason, and Thurston County communities through broad, diverse, and flexible funding for local nonprofits, the Community Grants program supports a wide range of 501(c)(3) organizations that contribute to the region's overall social, health, and environmental well-being across a broad range of focus areas, from arts to wellness and everything in between.

Together with our communities, the Foundation distributed \$376,620 to 84 nonprofits in 2022! Awards range from \$1,500 to \$5,000, and these organizations have the flexibility to decide how to use the funding to serve their communities best.

This year, 40 community members participated as reviewers for Community Grants. We believe that local people know best what their communities need, and including their perspectives and experiences ensures that we support the most crucial priorities in each county. Together, we use our growth mindset to make the best and most equitable decisions regarding funding that best support our region.

I love learning about the creative ways organizations and volunteers provide essential needs and create opportunities for Lewis County residents. It's been a joy and privilege to be a part of the process over the past several years!"

—REBECCA STAEBLER, COMMUNITY GRANTS COMMITTEE MEMBER



Grantee Highlights



CISPUS LEARNING CENTER

For 50+ years, Cispus Learning Center has cultivated the potential of thousands of local young people. Located in Lewis County and nestled among the trees of Gifford Pinchot National Forest, Cispus leads students on a life-shaping journey of discovery—from the rivers, plants, geology, and animal life of the natural world around them to the leadership, responsibility, and purpose they carry within. Wi-Fi is limited across their 68-acre outdoor classroom, but the welcome and sense of belonging is not. To ensure all students benefit from their time in the fresh air, Cispus has gender-neutral spaces, prioritizes accessibility, encourages youth to problem solve for inclusivity, and offers a bilingual (English/Spanish) camp called La Cima.

NAMI THURSTON MASON

The past few years have emphasized the importance of mental health when it comes to our well-being, quality of life, and community resilience. When NAMI Thurston-Mason requested 2022 Community Grants funding for their campaign to reduce the stigma around mental illness in Mason County, we knew it was important to say yes. According to the 2021 Healthy Youth Survey, Mason County youth experience some of the highest rates of anxiety, depression, and suicide in Washington. We are grateful for the opportunity to partner with NAMI to ensure young people across Mason County—and the many other people NAMI serves who are affected by mental illness—are supported and empowered to enjoy a healthy and meaningful life.



OLYMPIA LAMPLIGHTERS

Something we learned through our Resilience Fund Grants is the importance of both art and "third places" (where people can gather outside home or the workplace) for resilient communities. Olympia Lamplighters activate this idea through their mission to provide creators and artists of all ages and disciplines a space to engage, inspire, and grow together as an all-inclusive community. Whether they are providing artists with co-working or gallery space, hosting art classes, LGBTQ dances or networking meetings, or a winter bazaar where BIPOC vendors can showcase and sell their work—Olympia Lamplighters provides countless opportunities for community members to connect and experience the benefits of art on mental health, joy, and wellbeing.

Community grows through relationships. Relationships are rooted in trust.

For over three decades, the Community Foundation has prioritized trust and relationships as crucial to our role as a place-based funder whose sole focus is local communities. The years have taught us that building relationships and cultivating trust takes courage, humility, and time, and that it is always worth the effort. It consistently helps us be a better partner, steward funds with integrity, and create a greater impact.

In recent years, we deepened our commitment to trust in our grantmaking by simplifying our application process and removing restrictions from nearly all of our grants. This shift toward more responsive, flexible unrestricted funding was effective. It created a more equitable

balance of power, freed up valuable time for local nonprofits to care for our communities, and made it easier for our partners on the ground to respond and adapt, especially in times of turmoil. These changes have enormous benefits and are a key part of our work.

TRUST IS MUTUAL.

Unrestricted funding acknowledges local nonprofits as trustworthy partners who know the needs and priorities of those they serve. We also know it's important for us to find ways to show up as a trustworthy partner for them and our broader community. Here are a few ways we worked to foster engagement, prioritize learning, and keep trust flowing both ways in 2022:

We **simplified and reimaged grant reporting** as an opportunity for nonprofits to share what they're learning about community needs and opportunities.

We **continued our practice of site visits**, connecting with several nonprofit partners in Lewis, Mason, and Thurston counties and seeing their incredible work in person.

We **increased transparency** through clear communication, sharing grantmaking process and frameworks, and growing participation on our committees.

We **hosted community listening sessions** for local nonprofits, who generously shared their time and feedback to inform and guide our work

We **invited local leaders and community members to share at our board meetings**, so that we could learn from their diverse perspectives.

The Community Foundation is grateful for every person in our communities who engaged with us, partnered with us, built trust with us, and supported our learning in 2022. Thank you for being **all in** for a vibrant and thriving South Puget Sound for everyone.



Your Generosity Now & Forever

A legacy of generosity is a powerful tool to catalyze social change, leave our world in better shape for future generations, and spread community-wide joy.

Building an enduring legacy

The idea of legacy may remind us of end of life, but really, it's about living. Legacy helps us decide how we want to live and the kind of world we want to live in. Considering your legacy—no matter your age or state of health—is a chance to reflect on what you've done in the past, what you're doing now, and what you still hope to accomplish. It's a chance to take stock of what matters, including the people, causes, and social institutions that have shaped you or added meaning.

Legacy is also fundamental to what it is to be human. It offers a glimpse into relationships, building strong communities, and the human spirit. We all inherit legacies and pass them on, adding our lived experiences and values through the beautiful art of storytelling with younger generations. The giving and receiving of legacies can evoke the entire spectrum of human emotions: hope, longing, anxiety, a sense of accomplishment, pride, contentment, joy, gratitude, humility, and love.



Making a legacy gift through the Community Foundation

Our Legacy Circle recognizes those who have left a gift to the Community Foundation of South Puget Sound in their will or estate plan. Donors who notify us of their plans receive special recognition (unless they prefer to remain anonymous) and invitations to Legacy Circle events.

Making a legacy gift is easy and flexible. It can be adjusted at any time in the future if needed. Your generosity as a Legacy Circle donor is a permanent reminder of what you value. It represents your extraordinary commitment to ensuring every community member—across generations—can thrive!

What is planned giving?

Planned giving, or legacy giving, is the act of making a significant gift during life or planning to leave a gift as part of your overall financial or estate plan. It is typically motivated by a desire to make an enduring impact on causes you care deeply about. Planned gifts may offer substantial financial, tax, and estate planning benefits while supporting the vital work of nonprofits across our communities.


While most planned gifts provide future support, such as bequests in wills or living trusts, some planned gifts provide current

support, such as gifts of real estate. For more complicated gifts, it's always best to consult with your financial or legal advisor and a representative from your selected nonprofit to ensure your gift is accepted and honored as intended.

The Foundation's philanthropy team is also available to help local donors, and nonprofits navigate questions about planned giving. Additionally, resources are available on leave10.org for donors, nonprofits, and advisors in our region who are part of this charitable movement.



Celebrating 20 Years of the Latinx Youth Summit



The Hispanic Roundtable's Latinx Youth Summit is an annual college and career event that draws hundreds of Latinx high school students across five Counties. For its 20th Anniversary, the summit returned as an in-person event at The Evergreen State College.

According to a 2021 USA Today report, "only 22% of Hispanics over the age of 25 have an associate's degree or higher compared to 40% of the general population." Furthermore, Excelencia in Education data shows that "Hispanic student college enrollment had been growing at an accelerated pace for more than 20 years, but in 2020 dropped significantly."

In response to these figures, Diana Torres Angulo, president of the Hispanic Roundtable, asks, "How do we build this bridge between high school and college?" The summit's answer is to help Latinx high schoolers envision themselves as college students and as future community members with bright, exciting careers. Holding the event at local colleges helps students do just that, opening their eyes to new possibilities.

Rooted in community support

Encouraging and equipping local youth have been central goals of the summit since the beginning. And they're particularly—and personally—important to a former Hispanic Roundtable board member, Olivia Salazar de Breaux.

As a high school student, de Breaux attended a one-day leadership workshop for Hispanic youth presented by the Hispanic Women's Network. The workshop changed her life trajectory, introducing her to important mentors and exciting career possibilities, even though she grew up in poverty and felt invisible at school.

The Latinx Youth Summit, she says, is built on the same idea as the workshop she attended all those years ago: "This is a space made for you with culturally relevant resources and stories and mentors. And opportunities that maybe you didn't think

were for you, like school. I didn't think college was ever going to be for me. But then I met these women and [heard] their stories...and I heard how they were fighting their way to where they are today—and they're very successful."

"The foundation is proud to continue supporting the Latinx Youth Summit," says Mary Lam, the Foundation's philanthropy and communication officer. "We believe in our local young people, and that an investment in this event is an investment in the bright futures of Latinx students and our community's future."

They wanted to bury us, but they forgot we are seeds

—MEXICAN PROVERB

Photo courtesy of Evergreen State College, featuring traditional Aztec dance group Ce Atl Tonalli.



2022 Give Local

Give Local, an initiative of the Community Foundation of South Puget Sound, aims to encourage community philanthropy, increase support for causes that people in our region care about, and boost nonprofit visibility. In 2022, local donors raised \$792,469 for 97 nonprofits. Clearly, people across the South Sound believe in giving back.

**\$792,469
raised**

**3,284 gifts
received**

\$2.9 million

all-time Give Local total

Presenting Sponsors

Dawkins Charitable Trust
SaviBank
The Confederated Tribes
of the Chehalis Reservation

OlyFed
Twin Star Credit Union
Union Bank
VanSchoorl Consulting
WSECU

Media Sponsors

94.5 Roxy
JOLT News
Lewis Talk
Play 96.1
Thurston Talk

The Gift of Giving

Nonprofits participate in Give Local because it's an effective way to raise funds for their important work; it gets the word out about their mission and connects them with everyday people who care about our communities.

Local donors look forward to this yearly event, and a wide range of people in our communities can—and do—participate. In fact, for the past two years, most incoming gifts have been \$200 or less.

As we prepared for the 2022 campaign, we reflected on this activity of generosity we witness each year and the feeling that each person receives from participating, leading us to this year's theme. We believe that the gift of giving is as much an act of joy for the donors of Give Local as it is for the participating nonprofit that transforms that gift into an act of caring, reinforcing our community's ability to adapt, prosper, and thrive.

**97
nonprofits**
participated

Best nonprofit
turnout to
date!

Continuous Gratitude

Thank you to the 97 participating nonprofits, 8 Presenting Sponsors, 5 media Sponsors, and 1,829 local donors that participated in Give Local! 2022's extraordinary \$792,469 raised would not have been possible without your participation and caring for the people and lands throughout our Lewis, Mason, and Thurston County communities. Community-wide philanthropy truly is a gift. Thank you!

Save The Date

Give Local 2023 is happening from November 6-17,
and we can't wait to celebrate with
our communities again!



2022 Scholarships

Each year, the Community Foundation awards local students of all backgrounds and education interests with scholarships to assist them with the cost of higher education. Scholarships are an important part of our community; by directly supporting education, these dollars improve individual futures and, by extension, strengthen our communities. That's why we're honored to team up each year with amazing donors who also believe in young people's potential. In 2022, the Community Foundation awarded \$178,250 in scholarships to 53 students!

Congratulations 2022 Graduates!

Amanda Winters Scholarship

Joel Martinez

Andrew Williams Oakes Scholarship

Kayla Feltus

Cody Brown Memorial Scholarship

Sydney Riedel

Coldwell Banker Evergreen Olympic Realty Scholarship

Erik Curley "Inspirational Educator"

Fey Greenwald
Kalyani Marsh
Saige Carpenter

Donald & Patricia Ernst Olympia Kiwanis Endowed Scholarship

Amanda Giang
Claudia Horton

Ecosystems Scholarship

Gabrielle Lund
Kaitlyn Glover

Ellen Anderson deMoise Scholarship

Esmeralda Acuna-Gaspar
Riley Labrum

Elizabeth Libby White Memorial Scholarship

Daniel Wolf
Isabella Kirk

Griffen School Tiernan-Keigher Scholarship

Sophie Skillman

Henry J. Melusky Memorial Scholarship

Aspen Cates-Doglio
Cora Teachout
Henry Basanich

John & Opal McGimpsey Scholarship

Bella Wiseman
Cashmere Tobias

L&E Bottling Company Scholarship

Kiana Koloushani

Learning Seed Foundation Scholarship

Abdulazeez Jubeer
Brisa Ramirez
Cashmere Tobias
Haley Luken
Makayla Grace Tajalle

Mary M. Knight Grade 13 Scholarship

Aden Ziegler
Danny Goeders
Quinnton Krippelcz
Zander Pogue

Mike & Sharon Welsh Scholarship

Cora Teachout

Next Step Scholarship

Shawn Nicholson

OHS Faculty Memorial Scholarship

Whitney Sederberg

OHS Foundation Alfred Lewis Memorial Scholarship

Cameron Ligtenberg

OHS Foundation Laurie Callaghan Memorial Scholarship

Katelyn Rigg

Thurston Climate Action Scholarship

Karina Greenlee
Margaret Koontz

Student Spotlight: Cashmere Tobias

Cashmere's applicant essay vulnerably traces the challenges he's faced as a Black transgender student, culminating in the long days of the COVID-19 lockdown when the spaces of refuge he had developed at school dissolved. After months of isolation, he reached out and constructed a new path forward.

"In an effort to weave connections with the outside world again" he says, he applied for a fellowship with Stonewall Youth. Through the organization, he spoke to queer youth virtually, encouraging them "that they were seen, that we were still connected while being physically apart." Cashmere's deep commitment to live fully as himself, his resilience, and his commitment to building community connections in the midst of adversity caught the eye of the scholarship committees.

In the future, Cashmere plans to open a special place that uplifts people in the LGBTQIA+ community and promotes mental health. We're excited about Cashmere's future and for the many people who will benefit from his authenticity and vision.



New Scholarship: Elizabeth Libby White Memorial Scholarship

This year, the family of Elizabeth Libby White established a scholarship in her honor for students at Elizabeth's alma mater, North Thurston High School. Elizabeth loved being involved in as many school activities as possible. She was deeply involved as a student, competing in volleyball, basketball, softball, and diving. She also served as ASB historian, yearbook editor, and French club president. When she graduated in 1997, she was chosen by her classmates to speak at the commencement. After graduation, Elizabeth attended the University of Washington, where she pursued a double major in political science and communications.

Elizabeth knew a great education opened doors for a higher quality of life and happiness and would be delighted to know that both Isabella Kirk and Daniel Wolf will be able to pursue their higher educational dreams with more financial certainty. Her older sister, Kris Estes, says they were all delighted to meet the first of many students who will benefit from this scholarship and from Elizabeth's legacy. "We were tremendously moved and elated for both recipients."

2022 Grantees

ARTS & CULTURE

Arbutus Folk School
Ballet Northwest
Creative Theatre Experience
Emerald City Music
Fire Mountain Arts Council
Great Bend Center for Music
Hands On Children's Museum
Harlequin Productions
Indigenous Performance Productions
Olympia Art Space Alliance
Olympia Arts & Heritage Alliance
Olympia Family Theater
Olympia Film Society
Olympia Historical Society
Olympia Lamplighters
Olympia Symphony Orchestra
Student Orchestras of Greater Olympia
Tenino Young-at-Heart Theatre
The Bridge Music Project
The Hawk Foundation for Research and Education in African Culture
Washington Center for the Performing Arts
Westport South Beach Historical Society
Window Seat Media

COMMUNITY & CIVIC ENGAGEMENT

ACLU of Washington Foundation
CascadiaNOW!
CFLeads
Dispute Resolution Center of Thurston County
Folds of Honor Foundation
Gold Star Memorial Foundation
Love Covers
NAMI Thurston Mason
North Mason Friends of the Library
Ocosta Recreation Association
Olympia Tumwater Foundation
Rods and Reels in Need
Rotary Club of West Olympia

South Sound Partners for Philanthropy
South Sound Philanthropy Summit
South Sound Planned Giving Council
STEP - Sharing Teens and Elders Project
The Mockingbird Society
The Woman's Club of Olympia
Thurston Community Television
Thurston County Volunteer Legal Services
Timberland Regional Library TVW
West Central Park Project

ECONOMIC OPPORTUNITY

ASHHO Cultural Community & Job Training Center
Enterprise for Equity Morningside
Northwest Cooperative Development Center
PacMtn
Sorooptimist International of Olympia
Sound Learning
Thurston County Chamber Foundation
Thurston Economic Development Council

EDUCATION & YOUTH

ALL Foundation of Washington - Legacy Washington
All Kids Win
Angels for Angels
Barry University
Big Brothers Big Sisters of Southwest Washington
Boston University
Boys & Girls Club of Chehalis
Boys & Girls Clubs of South Puget Sound
Boys & Girls Clubs of Thurston County
Capitol Battalion US Naval Sea Cadet Corps
Central Washington University
Centralia College
Chehalis Foundation
Child Care Action Council

Cispus Learning Center
Community Youth Services
DigiPen Institute of Technology
Eastern Washington University
Empowerment 4 Girls
Family Education and Support Services
Girl Scouts of Western Washington
Gonzaga University
Grand Canyon University
Grays Harbor College
Madison Elementary PTO
Mason County HOST
North Thurston Education Foundation
Olympia Education Foundation
Olympia Kiwanis Foundation
Oregon State University
Pacific Education Institute
Pacific Lutheran University
Pacific Shellfish Institute
PARC Foundation of Thurston County
Pope John Paul II High School
Puget Sound Estuarium
REACH for Literacy
Reach Out and Read, Inc.
Rochester Organization of Families
Saint Martin's University
San Diego State University
Seattle University
South Puget Sound Community College
South Puget Sound Community College Foundation
South Sound Parent to Parent
South Sound Reading Foundation
Stanford University
Stay Woke
STEM Partners Washington
Tacoma Community College
The Hispanic Roundtable
The Youth Connection
TOGETHER!
Toys for Tots Foundation
United Youth Movement

University of Washington
Walla Walla Community College
Washington State University
Wayne State University
Western Washington University
Westmont College
Whitworth University
Wild Grief
Williams College
Yelm Dollars For Scholars
Zeno

ENVIRONMENT & ANIMAL WELFARE

Back Country Horseman of Washington: Oakland Bay Chapter
Capitol Land Trust
Center for Responsible Forestry
Chehalis River Basin Land Trust
Community Farm Land Trust
Concern for Animals
Deschutes Estuary Restoration Team
Hood Canal Salmon Enhancement Group
Humane Society of Mason County
Joint Animal Services
Kitten Rescue of Mason County
LOTT Alliance-Regional Services & WET Center
Mason Conservation District
Master Gardener Foundation of Thurston
Nisqually Land Trust
Nisqually River Foundation
Olympia Community Solar
Onalaska Farm Sanctuary
South Puget Sound Salmon Enhancement Group
Thurston Climate Action Team

HEALTH & WELLNESS

A Gift for Special Children
American Red Cross
Bounty for Families
Community Integrated Health Services

Fred Hutchinson Cancer Research Center
Garden Raised Bounty (GRuB)
Girls on the Run West Sound
Health and Hope Medical Outreach
HeartStrides Therapeutic Riding
Mason General Hospital Foundation
Nature Nurture Farmacy
Northwest Kidney Centers
Olympia Area Rowing Association
Olympia Coalition for Ecosystems Preservation
Pierce County Aids Foundation (PCAF)
Providence Southwest Washington Foundation
Raise for Rowyn
Shriners Hospitals for Children
South Sound YMCA
Tenino Community Service Center
The Olympia Free Clinic
Washington Healthcare Access Alliance
YMCA of Greater Seattle

HOUSING & HUMAN SERVICES

Build A Bus Home
Cars4Giving
Catholic Community Services of Western Washington
Chaplains on the Harbor
Church of Living Water
CIELO
Community Action Council of Lewis, Mason & Thurston Counties
Community Food Pantry
Community Lifeline
Dry Tikes & Wet Wipes
Family Support Center of South Sound
Gary Sinise Foundation
Gather Church Food Bank
Homes First
Hood Canal Food Bank
Innovations Human

Trafficking Collaborative
Interfaith Works Emergency Overnight Shelter
Kokua
Lewis County Autism Coalition
Lewis County Food Bank Coalition
Mason County Senior Activities Association
Matlock Community Church Food Bank
Mercy Housing Northwest
North Mason Coalition of Churches and Community
North Mason Firefighters Association
North Mason Food Bank
Office Moms & Dads
Outdoors for Our Heroes
Partners in Prevention Education
Port of Support & Pathwayz to Success
Poverty Exed Project
Prince of Peace Catholic Church
Quixote Communities
Rainier Emergency Food Center
Rebuilding Together Thurston County
SafePlace
Scholar Fund
Senior Services for South Sound
SideWalk
South Puget Sound Habitat for Humanity
The Crisis Clinic of Thurston and Mason Counties
The Mayday Foundation
The Moore Wright Group
The Saints' Pantry Food Bank
Thurston County Food Bank
Thurston Housing Land Trust
Turning Pointe Survivor Advocacy Center
Union Gospel Mission Association of Olympia
United Way of Thurston County
White Pass Community Services Coalition
Yelm Community Services

Establish, Grow, Give

Generosity is for everyone. It sparks hope and possibility and embraces the needs of our vibrant communities with an everlasting impact that provides real people with a joyful experience in all areas of life—for everyone.

Every year, the Community Foundation receives and stewards generous gifts and bequests from individual donors, families, businesses, and nonprofits. The proceeds from these gifts turn into grant and scholarship dollars that help transform our communities into more vibrant places.

To learn more about our funds, please contact our team at 360.705.3340 or by email at info@thecommunityfoundation.com.

Here's how donors like you gave generously in 2022:

Community Grants: \$376,620

Provide unrestricted grant dollars for local nonprofits to address our region's most critical needs and opportunities.

Resilience Fund: \$488,000

Established in the wake of the COVID-19 pandemic to help nonprofits adapt and support creative new approaches and partnerships.

Focus Grants: \$55,000

Grants for learning and strategic funding.

Give Local: \$792,469

Our annual online giving campaign.

Scholarship Funds: \$178,250

Investments in the education of tomorrow's leaders through student scholarships.

Agency and Designated Funds: \$385,455

Agency Funds are established by nonprofit, educational, or religious organizations. Designated funds are established by donors to benefit specific nonprofit organizations.

Donor Advised Funds: \$198,944

Designed for donors who wish to be actively involved in their philanthropy, these funds allow individuals, families, and businesses to participate in the grantmaking process.

Other: \$259,029

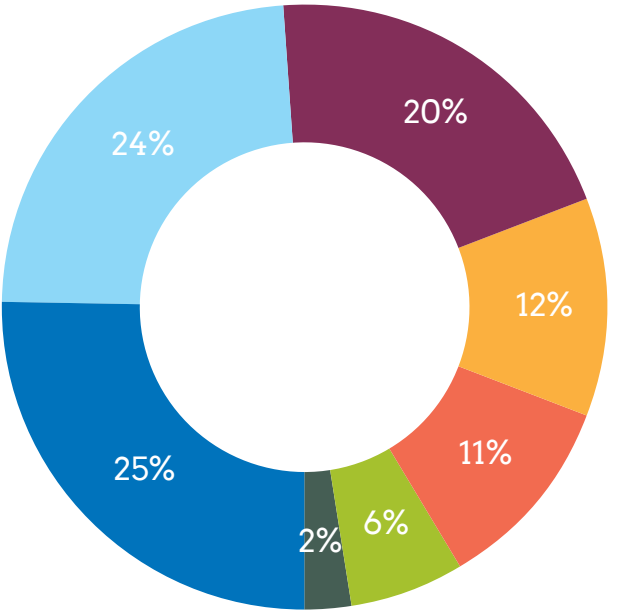
These dollars include field of interest funds and off-cycle grants.

\$2.7 M total

2022 Financials

Assets by Fund Type

- \$8.8M Designated
- \$8.2M Unrestricted
- \$7.0M Agency
- \$4.0M Field of Interest
- \$3.7M Scholarship
- \$2.1M Donor Advised
- \$0.8M Operating & Special Projects



Assets

Cash & cash equivalents	\$384,369
Pledge receivable	\$4,150
Prepaid expenses	\$8,988
Investments	\$11,094,931
Endowment investments	\$23,190,271

Total Assets **\$34,682,709**

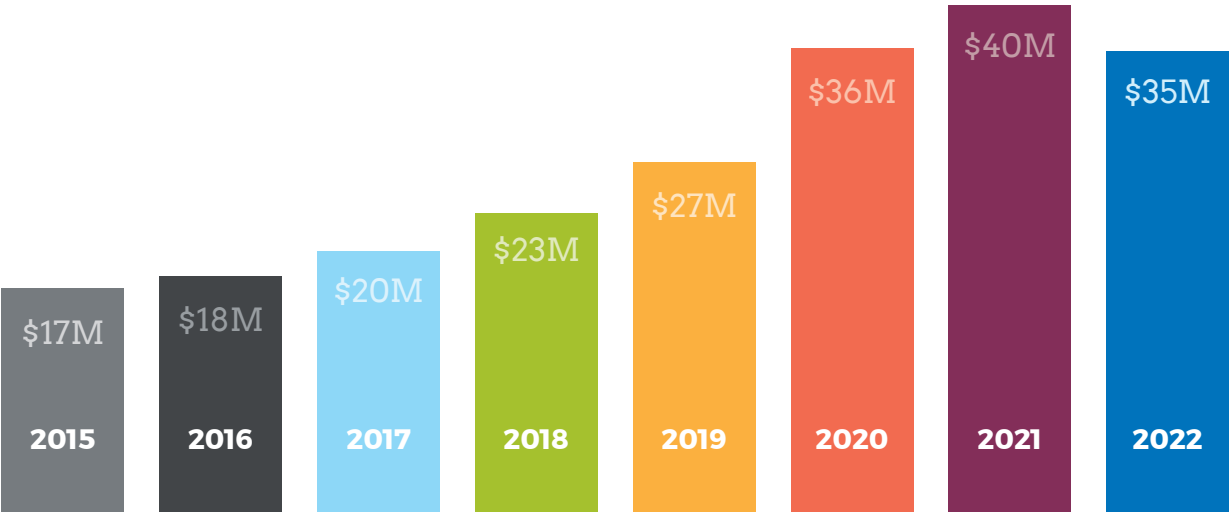
Liabilities & Net Assets

Accounts payable	\$1,125
Grants payable	\$73,250
Accrued liabilities	\$37,406
Funds held for other agencies	\$6,785,372

Total Liabilities **6,897,153**

Net Assets \$27,785,556

Total Liabilities & Net Assets **\$34,682,709**



2022 Funds

DONOR ADVISED

Charneski L & E Bottling Co
Holiday Support Fund
Chet Rhodes Family
Chehalis Area Fund
Clees Family Fund
Darren Nienaber Fund
David & Nancy Bayley
Charitable Fund
Dennis and Joan Peterson
Family Advised Fund
Don Rhodes Family Fund
Fox-Dobbs Family Fund
Fly Away Fund
Greater Yelm Area Fund
Greene Realty Giving Fund
Hannah S. McDonald
Endowment
Jack & Luellen Charneski
Charitable Fund
Jim Lazar Fund for Clean
Energy, Environment, &
Engagement
Joe Family Fund
Kimberly Ellwanger Fund for
Women and Children
Lieb Family Fund
**The Mismatched Socks
Fund**
OHS Foundation Fund
Patricia O'Donnell & Myra
Butts Fund
**Phyllis Mandel Fund for
Animals in Need**
Powerful With Love Fund
Rachel Corrie Memorial
Fund
Ray T. McLane Family Fund
Robert and Lynn Brunton
Family Advised Fund
Schorno Family Yelm
Scholarship Fund
The Monohon Initiative
Fund
Thurston County Children,
Youth, & Families Fund
Thurston Mason Medical
Alliance Fund
Vannerson Family Advised
Fund
Warjone Family Advised
Fund
Wubbena Family
Foundation

Highlighted funds are new.

DESIGNATED PURPOSE

Build for Tomorrow Fund
Community Foundation
Administrative
Endowment
D. Michael Sharar Water
Education Fund
Harold & Inge Marcus
Designated Fund
Jean T. Dawkins Fund
Marguerite Lynch Bishop
Fund
Norma Schuiteman
Sustaining Fund
Patty Mulhern Fund for
Nurses
Ruth R. Furman Little Red
School House Fund
William A. Lovett Fund
Yelm High School
Community Scholarship
Fund

AGENCY

Andy Crow Wurlitzer Organ
Endowment
Boys & Girls Clubs of
Thurston County Club
Graduate Endowment
Fund
Boys & Girls Clubs of
Thurston County Club
Member Endowment
Fund
Boys & Girls Clubs of
Thurston County Major Gift
Fund
Concern for Animals
Grotsky-Brodoff Family
Endowment for Pizza
Klatch
Hands On Children's
Museum Endowment
James Andrew Adams
Quixote Communities
Fund
**Leighton Johnson
Foundation Fund**
Mason County HOST Fund
Mason General Hospital
Foundation Endowment
Nisqually Land Trust
Endowment

NOVA School Endowment
Olympia Kiwanis
Foundation Scholarship
Fund
Pam Toal Leadership Fund
PARC Foundation
Endowment
PARC Foundation Jocelyn
Dohm Classical Choral
Fund
Senior Services for South
Sound Endowment
Senior Services for South
Sound Brighter Days
Program Fund
The Chief Justice Gerry
Alexander Endowment for
TVW
Thurston Community
Television Endowment
United Way of Thurston
County Endowment
YWCA of Olympia Women's
Community Endowment

GENERAL UNRESTRICTED

Barbara McPherson
Endowment
Charles L. Trowbridge
Memorial Endowment
Coldwell Banker Evergreen
Olympic Realty Fund
Community Foundation
Program Endowment
Gail Wyman Endowment
Irving A. Lassen Foundation
Vannerson Family Endowed
Fund

FIELD OF INTEREST

Bruno and Evelyne Betti
Foundation Fund
Capital City Marathon
Foundation Fund
Community Foundation
Disaster Relief Fund
Community Foundation
Fund for the Environment
Community Youth Fund
Ina Fennell Fund
Jack and Neddie Rose
Farrington Endowment
Jane Larsen Music Fund

Jane Larsen Youth
Endowment
Jesse R. Roberts Fund
Katherine Hayes Memorial
Fund
Thurston County Dental
Access Network (TCDAN)
Fund
Thurston County School
Retirees Association
Walter A. Bratton Youth
Endowment

SCHOLARSHIP

Amanda Winters
Scholarship
Andrew William Oakes
Scholarship
Cody Brown Memorial
Scholarship Endowment
Coldwell Banker Evergreen
Olympic Realty
Scholarship
Dan R. Montgomery
Scholarship

Donald & Patricia Ernst
Olympia Kiwanis Endowed
Scholarship
Ecosystems Scholarship
**Elizabeth Libby White
Memorial Scholarship
Fund**
Ellen Anderson deMoise
Scholarship
Grade 13 Fund
Griffin School Tiernan-
Keigher Scholarship
Henry J. Melusky Memorial
Scholarship
**Jay Elder Creativity
Challenge**
John & Opal McGimpsey
Scholarship
Keith Skogsberg Memorial
Scholarship
L & E Bottling Company
Scholarship
Learning Seed Foundation
Scholarship Endowment

Learning Seed Foundation
Scholarship Fund
Mike and Sharon Welsh
Scholarship Fund
Next Step Scholarship
OHS Faculty Memorial
Scholarship Fund
OHS Foundation Alfred
Lewis Memorial
Scholarship
OHS Foundation Laurie
Callaghan Memorial
Scholarship
Pielak Family Legacy Fund
**Randy Edwards Memorial
Fund**
Richard J. Geiger Memorial
Scholarship
Robert and Kathryn Wolf
Memorial Scholarship
Stellajoe Staebler
Scholarship
Thurston Climate Action
Scholarship Fund

Welcome New Funds

We are excited to welcome ten new Funds to the Community Foundation this year! These funds range in interests and sizes, yet all contribute to our region's vibrancy. Please join us in welcoming this year's new funds.

Phyllis Mandel Fund for Animals in Need

Donor Advised Fund

Phyllis Mandel grew up in Olympia, and she developed a philanthropic spirit at an early age. This year, Phyllis established the Phyllis Mandel Fund for Animals in Need out of concern for local pet owners and their pets. This fund exists to support organizations that provide care, shelter, programs, and necessary medical services to animals in Thurston, Mason, and Lewis Counties.

The Leighton Johnson Foundation Fund

Agency Fund

Leighton Edward Johnson was a devoted member and supporter of the Olympia Kiwanis Club, actively serving on their board for many years. After his passing, a legacy gift was transferred from his estate to an agency fund with us to support the Olympia Kiwanis Club. Mr. Johnson's charitable legacy will benefit many in our community for many years to come.

Board of Directors

- CHAIR**
Katie Rains (she/her)
WA State Dept of Agriculture
- VICE CHAIR**
Teresa Loo (she/her)
Tacoma Power, Wildlife & Lands Manager
- TREASURER**
Josh Deck (he/him)
Olympia Federal Savings, President & CEO
- SECRETARY**
Janet McLane (she/her)
State Court Administrator, Retired
- PAST CHAIR**
Jim Morrell (he/him)
Peninsula Credit Union, President & CEO

- Charli Terminelli (she/her)
ACU, Business Development Manager
- Craig Ottavelli (he/him)
OrgSupport, Founder
- Dan Jones (he/him)
North America Talk/ ThurstonTalk, CEO, Founder
- John Stormans (he/him)
Greene Realty Group, Managing Broker/Realtor
- Julie Cooke (she/her)
Coldwell Banker Evergreen Olympic Realty, Broker
- Kelsey Hulse (she/her)
Strategies 360, Vice President of Government Relations
- Renee Radcliff Sinclair (she/her)
TVW, President & CEO
- Robert Bradley (he/him)
Family Office CEO, Retired
- Todd Shobert (he/him)
WSECU, VP of investments & Insurance
- Zahid Chaudhry (ze/zir)
People of Color Community Coalition, Founder

Staff

- Janece Levien (she/her)
Director of Community Programs
- Mary Lam (she/her)
Philanthropy & Communications Officer
- Melissa Rosscup (they/them)
Program Coordinator
- Mindie Reule (she/her)
President & CEO
- Susan Adams (she/her)
Finance & Operations Officer

New Staff Highlights



Meet Our New Director of Community Programs, Janece Levien (she/her)

Janece has spent ten years in higher education and the nonprofit sector, including four years in philanthropy as a Senior Program Officer at Greater Tacoma Community Foundation prior to joining our team. She studied sociology and Spanish at the University of Puget Sound and holds a master's in educational leadership from Concordia University. She also served as a Peace Corps volunteer in Guatemala.

Janece cares deeply about increasing accessibility and opportunities for communities, particularly in outdoor spaces. She is passionate about building relationships, listening to those most impacted by systemic barriers, and centering their voices and experiences in her work. She moved to West Lewis County in 2022 and loves working in and alongside our community. When not at work, you can find Janece hunting, camping, cooking, and exploring the PNW with her boyfriend and their dogs, Linda and Nala (Nelson, the cat, prefers to stay napping at home).

Meet Our New Finance & Operations Officer, Susan Adams (she/her)



Susan Adams is a person-centric and analytical problem solver with 20+ years of experience in the financial sector, including ten years as the executive director of the Silicon Valley chapter of the Financial Planning Association. Her first role in philanthropy was with the Renton Regional Community Foundation, where she saw philanthropy's positive effect on its region and its people.

Originally from Texas, Susan called Northern California home for twelve years before relocating to the Puget Sound in 2021 with her husband. Susan is excited to work alongside our staff, board, and communities to further our charitable legacy and mission. Susan and her husband have two college-aged kids and are learning to be empty-nesters. She loves exploring new places, meeting people and learning their stories, hiking, reading, and gardening. She's not an athlete, but she enjoys watching sports (especially Texas A&M—go Aggies!) and is somehow able to snow ski.

The lessons of the past two years have called upon us to **lead differently** in 2022.

As the Community Foundation for Lewis, Mason, and Thurston Counties, we exist to gather and distribute resources where they are most needed and commit to ensuring that our growth is inclusive and benefits everyone. The Community Foundation is also a hub for community-wide generosity and impact, and by prioritizing equity and empowering community voices, we know that more people across our communities are gathering for good alongside us to meet the more pressing needs of this moment together and co-create a bold future where our communities continue to thrive.

**Here's to our bright, flourishing,
and vibrant future together!**



212 Union Ave SE, Suite 102
Olympia, WA 98501

Contact us
[360.705.3340](tel:360.705.3340)

Visit our website
thecommunityfoundation.com



Leave 10

SOUTH SOUND

An initiative that educates, inspires, and encourages individuals to leave at least 10 percent of their estate to charity. The goal is to encourage more people to embrace philanthropy by making it a part of their legacy through planned giving. In 2022, we made space for nonprofits and professional advisors to connect and take the pledge while furthering Leave 10 across our region.

