

The Ripple Effect



2021 REPORT TO THE COMMUNITY



LETTER FROM OUR PRESIDENT & CEO, MINDIE REULE

Generosity Flows Outward



One of my favorite pastimes is exploring nature in our beautiful region. Outdoors, my two young kids are always drawn to the water—puddle, pond, stream, lake, river, bay, inlet, or ocean. As we fling rocks into the water, I love to watch the concentric circles widening as the ripples flow outward.

When I think of the generosity we witnessed at the Community Foundation this year, that is what I picture.

So many people showed up eager to give—tossing their metaphorical stones into the water—in support of our communities. More people are leaving gifts in their wills; establishing funds; and a record number are giving small donations. Thank you!

The ripples of generosity flow from the smallest act of kindness to the biggest endowment, becoming wellness and vibrancy across our region, making our communities stronger and more equitable.

Given the generosity that emerged in the pandemic and the way it deepened this year, 2021 was a fitting year to introduce our new logo.

Our organization's new symbol, with its interconnected ripples and fresh colors, speaks to our collective care and solidarity. The ripples represent our connection to place, the strength of a well-linked community, and the powerful effects of generosity. The bright colors reflect the natural abundance around us and the beautiful diversity of people who call this place home. They remind us of the joy and inspiration we experience when we work together—when our ripples of generosity flow.

In real life, these ripples are more than a symbol. The many ways our communities supported and embraced each other this year became tangible outcomes that show how many of us are prioritizing the well-being of our neighbors and communities.

We're proud of this work and proud to do it alongside you. Thank you so very much for joining in so everyone can live in fullness and thrive.

A handwritten signature in black ink, appearing to read 'Mindie Reule'.



Welcoming colors represent the **beautiful diversity of people** who call this place home.



Contemporary interpretations of color represent the **rich landscape** of our region in the South Puget Sound.



**Community
Foundation**
OF SOUTH PUGET SOUND



Together, they represent a **community of generosity**.



Ripples represent the strength of a **well-linked community**.

Our Impact



Increased
community
participation

with 47 grant evaluators
and 5 new board members

193
Grantees

in 2021



A whopping
52% increase

in Give Local giving in 2021

\$2,564,250

in grants and scholarships,
our biggest year ever!

Co-Launched
Leave 10
South Sound

educating and encouraging people to
leave at least 10% of their estate to charities

How We Put *Your* Generosity to Work

Generosity is for everyone. It sparks hope and possibility and embraces the needs of our vibrant communities with an everlasting impact that provides real people with a joyful experience in all areas of life—for everyone. We all uplift and enact this shared truth by giving generously to the communities we know and love.

The Community Foundation manages generous gifts from individual donors, families, businesses, and nonprofits. The proceeds from these gifts fund today's community needs while preserving resources for tomorrow's priorities. By embracing a broad, flexible approach to giving, we also help donors target their support. Here's how donors like you gave generously in 2021:

Community Grants: \$341,515

Provide unrestricted grant dollars for local nonprofits to address our region's most critical needs and opportunities.

Resilience Fund: \$512,076

Established in the wake of the COVID-19 pandemic to help nonprofits adapt and support creative new approaches and partnerships. Learn more on page 8.

Focus Grants: \$120,000

Grants for learning and strategic funding. Learn more on page 12.

Give Local: \$795,682

Our annual online giving campaign. Learn more on Page 16.

Scholarship Funds: \$164,750

Invest in the education of tomorrow's leaders through individual student scholarships. Learn more on page 18.

Agency and Designated Funds: \$321,100

Agency Funds are established by nonprofit, educational, or religious organizations. Designated funds are established by donors to benefit specific nonprofit organizations.

Donor-Advised Funds: \$117,330

Designed for donors who wish to be actively involved in their philanthropy, these funds allow individuals, families, and businesses to participate in the grantmaking process.

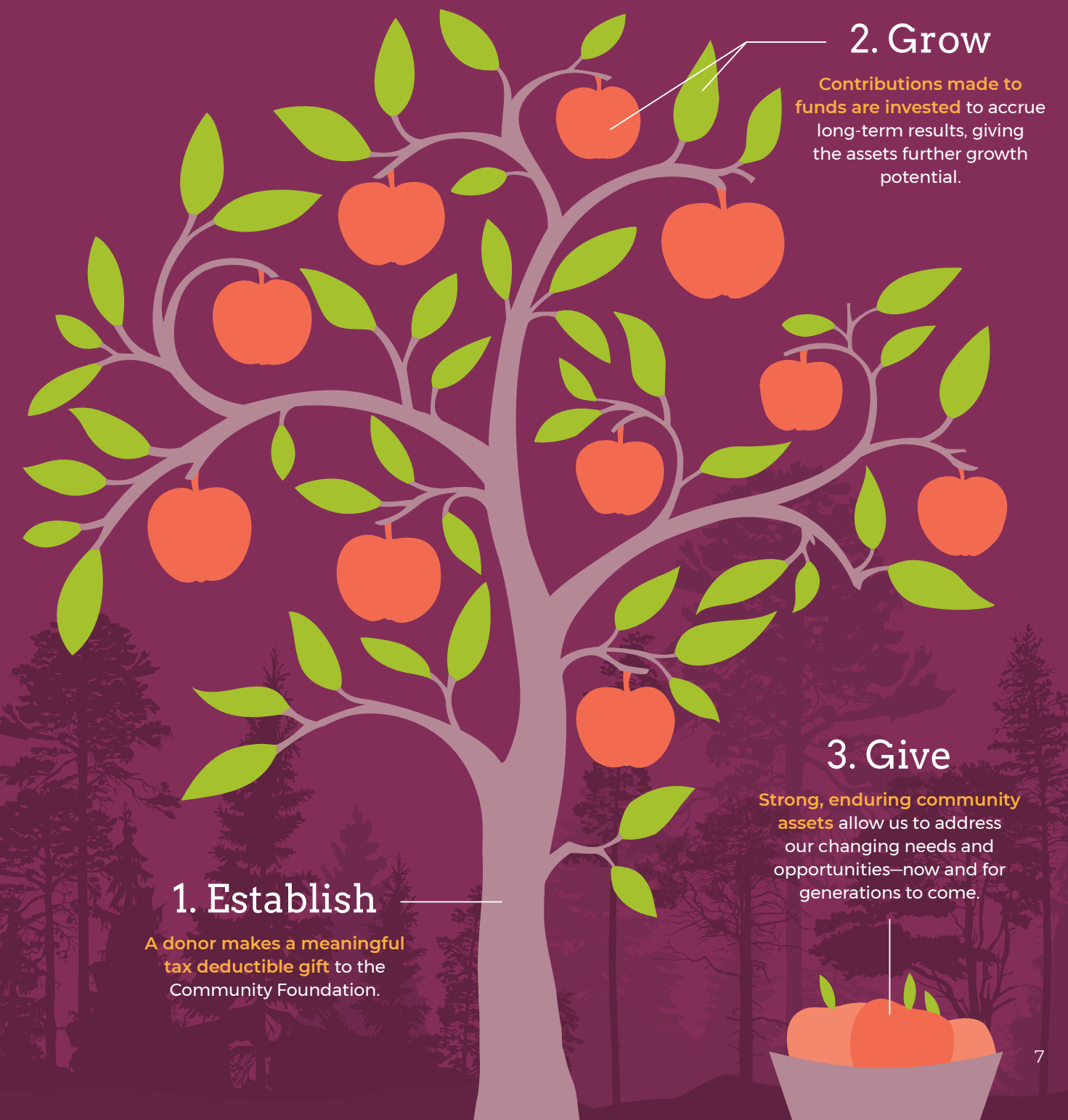
Other: \$222,652

These dollars include field of interest funds, off-cycle grants, and \$70,102 in Mason County COVID-19 relief dollars in partnership with United Way of Mason County.

TOTAL: \$2.59M

Your generosity turns into grant dollars and scholarships that transform our communities into more vibrant places to live and support a wide range of philanthropic goals that enrich our communities.

So, how does this all work?



We Are Resilience

The Resilience Fund Grant Program

emerged in late 2020 in response to the pandemic. We established it to address the impacts of COVID-19, strengthen our region's long-term efforts to rebuild, respond to emerging opportunities, help nonprofits adapt, and support creative new approaches and partnerships.

Other Award Recipients

- Arbutus Folk School
- ASHHO Cultural Community & Job Training Center (CCJTC)
- Bounty for Families
- Boys & Girls Club of Chehalis
- Boys & Girls Club of SPS
- Child Care Action Council
- Community Lifeline
- Community Youth Services
- Dispute Resolution Center of Thurston County
- Family Education & Support Services
- Garden Raised Bounty (GRuB)
- Great Bend Center for Music
- Habitat for Humanity Mason County
- Harlequin Productions
- Hood Canal Salmon Enhancement Group
- Interfaith Works Emergency Overnight Shelter
- Lewis County Autism Coalition
- North Mason Resources
- Rebuilding Together Thurston County
- Rochester Organization of Families
- Shelton Family Center
- Society of St. Vincent de Paul
- South Sound Estuary Association
- SPS Habitat for Humanity
- The Crisis Clinic
- The Saint’s Pantry Food Bank
- Turning Pointe Survivor Advocacy Center
- WA Center for the Performing Arts

The Bruno and Evelyne Betti Foundation seeded this fund with a generous gift, which grew quickly during Give Local 2020 as community members pitched in, matched by Puget Sound Energy. With further matching funds from AllInWA, we raised \$900,000 together with our community!

In May of 2021, we opened the Resilience Fund grant program. Over the next seven months, we awarded \$512,000 in grants to 31 organizations. These grants funded a range of important work addressing food and housing security, connecting children and youth, supporting our hard-hit arts sector, and ensuring our community has valuable “third spaces” where we can gather and connect.

31 grants
to local nonprofits in our tri-county

\$512,076
in unrestricted grant dollars

7 Months
of rolling applications

Resilience Fund
Grantee Highlights



SOUTH SOUND YMCA (\$30,000 grant)

Our friends at the Y celebrated the grand opening of a new YMCA facility in Shelton in 2021—launching and starting operations in the middle of the pandemic! Their ongoing commitment to building justice-driven spaces is ensuring their work in Shelton includes and supports the whole community. One practical way they’ve advanced equity was filling some of the 60 new jobs they brought to Mason County with multilingual staff to support the area’s large English Language Learning community. Thank you, YMCA, for the crucial way you strengthen and care for our communities with dignity and respect for all!

LEWIS COUNTY GOSPEL MISSION (\$10,000 grant)

Lewis County Gospel Mission serves the basic needs of under-resourced people in Lewis County with an array of services that include a day shelter, meals, clothing, showers, haircuts, and bus passes. They also partner with others to serve as a hub for people to access housing and employment resources, mental health, and medical services. Grant funding from the Resilience Fund went toward helping them correct an issue with annual flooding that regularly creates barriers and accessibility issues for members of our Lewis County community.



BUILD A BUS HOME (\$30,000 grant)

If you have ever stepped out of a hot shower and thought, “Wow, I feel human again!” then you are already familiar with the impact of Build A Bus Home (BABH). One of BABH’s key services is to provide hygiene services to houseless and low-income guests. With 17 showers and foldout hygiene stations with mirrors and sinks, their SHOWER POWER PLUS Mobile Hygiene Trailer provides thousands of showers each year. This simple humanizing solution enhances the quality of life, health, and self-esteem. This creates ripple effects by improving job, income, housing, and service outcomes too.

Focus Grants

The Community Foundation established Focus Grants in 2020 to support learning and explore how larger funding amounts can create a greater impact. We are excited to learn from every one of our 2021 Focus Grant recipients, who are all making a difference through advancing equity and inclusion here in the South Puget Sound.

Indigenous Performance Productions (IPP) was one of five 2021 Community Foundation Focus Grant recipients. Founded in 2019, this Olympia-based nonprofit creates opportunities in the performing arts world for Native and Indigenous artists.

“In Indigenous communities our stories give us hope and connection, guidance and wisdom,” says IPP’s founder, Andre Bouchard (of Kootenai/Ojibwe/Pend d’Oreille/Salish descent). “There is an epidemic in Native communities that pre-dates COVID. Our young people are dying at an alarming rate—succumbing to despair through substance abuse, suicide and simply disappearing. We hope that the stories that emerge from this program will give a light in the darkness to our young people, create connection where there was despair, and give them a voice.”

The stories IPP artists have brought to life for our communities are already changing our local narrative. Beyond that, we are inspired by the vision and future potential IPP brings to our area—including the potential for our region to become a hub for contemporary Native performing arts.



OTHER FOCUS GRANT RECIPIENTS INCLUDE:

The Hawk Foundation for Research and Education in African Culture dedicates itself to the promotion of education, holistic health and trauma healing in the African American community, with recognition that when one is healed it touches those around them.

Pizza Klatch fosters resilience in LGBTQ+ youth and create a safe and positive school experience through support, education and empowerment.

Innovations HTC engages first responders, tribes, and other stakeholders in eliminating human trafficking through solution-based knowledge and trauma-informed strategies, and to empower survivors to heal and build self-sufficient, affirming lives.

TOGETHER!’s Host Homes Program provides safe, short-term host housing for unaccompanied high school students experiencing housing instability.

Welcome to the Table

GOVERNANCE & GRANTMAKING WITH OUR COMMUNITIES

The Community Foundation of South Puget Sound is working toward a sustainable region where people throughout the counties and tribal communities we serve will thrive. This means coming together to address a range of needs and opportunities as unique and diverse as the many people who live here.

To steward community resources well in service to so many different people, we need a big decision-making table with room for everyone to belong.

This is not just because including many people with diverse backgrounds and lived experiences leads to better decisions—although the research

shows that it does! It is also because local communities know what they need to be strong, healthy, and vibrant. Listening to more community perspectives ensures the priorities of our communities are the priorities we support.

In 2021, we were excited to make progress toward building a bigger table and welcoming more voices to guide our grantmaking and lead our strategic work.

We sought broader representation on our board

Our 2021 board recruitment goal was to welcome fresh leaders who are enthusiastic about our work and represent South Sound communities more broadly. To pursue this goal, we expanded our board recruitment process by publicizing our search widely and by accepting open nominations through an accessible online form where any interested community member could recommend themselves or someone else for consideration.

We received fifteen nominations through this process and added five phenomenal new members to our board. Each of them is enthusiastic about our mission, energetic, and committed. And they bring with them a broad range of expertise.

We grew our community grants committees

A record-breaking forty-seven volunteers signed up to serve on our Community Grants committees this year. They came from a range of sectors and backgrounds—health care, human services, journalism, the arts, education, government, small business, social work, and more. For the first time ever, we also invited staff from nonprofit organizations to join our grant committees and share their unique insights too.

Supported by our staff, a thorough orientation, strong conflict of interest guardrails, and a robust grantmaking process, these community members brought an array of fresh and valuable perspectives to our funding decisions. Together, they made our Community Grants discussions and decisions richer and more thoughtful than ever.





Strong. Generous. Community.

The Community Foundation of South Puget Sound inspires philanthropy and helps donors give generously in ways that matter to them. Give Local South Puget Sound is our annual online giving campaign that promotes community and generosity, while strengthening local nonprofit missions across Thurston, Mason, and Lewis Counties.

Generosity Like Never Before

During our fifth annual Give Local, your generosity and sense of togetherness helped ensure our communities remain strong and compassionate. Donated funds from this campaign went directly to the 87 participating local nonprofits making life better for all by serving our communities, stewarding the environment, creating art, and improving our lives!

\$795,682 raised

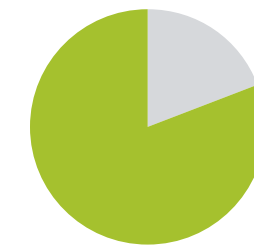
Extraordinary Gratitude

Thank you to our donors, sponsors, and local nonprofits for being part of our annual celebration of local giving. Despite the challenges of 2021, you came together and raised a total of \$795,682—the most raised to date!

Give Local was made possible thanks to the support of so many in our region. Our team is especially grateful to the Dawkins Charitable Trust, WSECU, OlyFed, L&E Bottling, the Chehalis Tribe, and all Give Local 2021 sponsors.

Bonus Fund

More abundantly than in previous years, donors gave to the Bonus Fund, created to provide donors the opportunity to boost all participating nonprofits (because choosing one or two nonprofits to donate to is simply too difficult). The Dawkins Charitable Trust seeded the Bonus Fund with \$100,000, and donors championed the fund, piling on an additional \$27,870 to be spread among all participating nonprofits, proportionally increasing the value of every dollar raised, which means that every dollar raised carries more impact!



81% of nonprofits

expressed that they raised funds through
Give Local they would not have otherwise raised

87 nonprofits participated

Save the Date for Give Local 2022 happening this year from November 7-18.

We can't wait to celebrate with
our communities again!



DAWKINS
CHARITABLE TRUST



Lucky eagle
CASINO & HOTEL

Play
96.1
KXXO.COM

OlyFed
BANKING
THAT'S
MUTUAL

PSE
PUGET
SOUND
ENERGY

OLYMPIA
Yacht Club

54.5
ROXY

Thurston
TALK

TwinStar
CREDIT UNION

UnionBank

VanSchoor
Consulting

Scholarships

Investing in education is an investment in a better future—not just for students, but for families and communities too. That’s why we’re honored to team up each year with amazing donors who also believe in young people’s potential. These donors trust us to manage their scholarship funds to support local students with the pursuit of their future goals.

Congratulations 2021 Graduates!

Andrew William Oakes Scholarship

Tanya Sanchez-Lopez

Cody Brown Memorial Scholarship

Brook Harrison

Coldwell Banker Evergreen Olympic Realty Scholarship

Allison Holder
Bethel Asomaning
Whitney Sederberg
Brad Davis “Inspirational Educator”

Dan R. Montgomery Scholarship

Andres Escobedo
Arianna Bush

Donald & Patricia Ernst Olympia Kiwanis Endowed Scholarship

Catherine Savel
Daniel Lee
Hugh March
Madeline Waite

Ecosystems Scholarship

Anna Gilmore
Jessica Espy
Keith Johnson

Ellen Anderson deMoise Scholarship

Karen Wu
Sofia Arceo

Griffin School Tiernan-Keigher Scholarship

Kennedy Pulley
Lucy Teuteberg
Matthew Lindblom
Ryan Coombes

Henry J. Melusky Memorial Scholarship

Emerson Moore

John & Opal McGimpsey Scholarship

Haven Barnes
Hannah Sasse
Maya Forrester
Aryana Merritt
Rakshith Mullukatte
Daniel Saelid

L & E Bottling Company Scholarship

Esther Kim
Madison Vu
Thea Marie Deanon

Learning Seed Foundation Scholarship

Marina Davis
Allison Diviney
Kevin Nguyen
Raechelle Pidone

Tanya Sanchez-Lopez
Robert Simon
Kyungmin Yook
Kobe Dennis
Cindy Doan
Maya Forrester
Brandon Lee
Ana Park
Lina Park
Luis Rodriguez-Socon
Angelica Romero-Sanchez
Elijah Smith
Madison Vu

Mike and Sharon Welsh Scholarship

Jack Olsen

Next Step Scholarship

McKenzie Bowers

OHS Faculty Memorial Scholarship

Bethel Asomaning

OHS Foundation Alfred Lewis Memorial Scholarship

Aidan McCurley

Ohs Foundation Laurie Callaghan Memorial Scholarship

Helen Hauschka

Thurston Climate Action Scholarship

Kaylee Shen

Meet Two of Our Scholarship Students

Haven Barnes

John and Opal McGimpsey Scholarship

2021 McGimpsey scholar, Haven Barnes, can trace her career goals back to the ICU nurses that once cared for her younger brother. Through their compassionate care, Haven says, “My desire to be a nurse was born.”

She earned a certified nursing assistant license while in high school and took prerequisite courses for nursing through Running Start. She started working as a CNA when she turned 18 and plans to earn a nursing degree at Centralia College before pursuing a BSN in nursing.

Haven’s goals and determination were a perfect fit for the John and Opal McGimpsey Scholarship, a significant opportunity established in 2006 to help hard-working students focus on their studies. Their legacy will have a ripple effect, touching many lives through Haven. As she puts it: “I want to be a part of the team whose job it is to keep the heartbeat of our community strong and hopeful by simple acts of care.”



Jack Olsen

Mike & Sharon Welsh Scholarship Fund

The family of Michael Francis Welsh established the Mike & Sharon Welsh Scholarship to honor his memory in 2020 by supporting an Olympia High School student pursuing studies related to teaching or education.

In addition to valuing learning, Mike’s wife Sharon was an educator her entire working career and retired as the Assistant School Superintendent of the Yelm School District. Mike and Sharon’s two daughters both graduated from Olympia High School.

2021 was the Community Foundation’s first year hosting the Mike & Sharon Welsh Scholarship, and the award could not have gone to a more wonderful recipient than Jack Olsen. Jack’s work ethic, natural abilities with kids, leadership skills, and passion for teaching and education made him stand out.

2021 Grantees

ARTS & CULTURE

Arbutus Folk School
Ballet Northwest
Emerald City Music
Fire Mountain Arts Council
Great Bend Center for Music
Hands On Children's Museum
Harlequin Productions
Indigenous Performance Productions
Olympia Arts & Heritage Alliance
Olympia Film Society
Olympia Symphony Orchestra
Olympia Youth Chorus
Student Orchestras of Greater Olympia
South Beach Arts Association
Tenino Young-at-Heart Theatre
The Bridge Music Project
Washington Center for the Performing Arts
Window Seat Media
Westport South Beach Historical Society
Harlequin Productions
The Hawk Foundation for Research and Education in African Culture
Yelm Jazz in the Park

COMMUNITY & CIVIC ENGAGEMENT

CFLeads
Folds of Honor Foundation
Media Island International
North Mason Friends of the Library
Olympia Tumwater Foundation
Rotary Club of West Olympia
South Sound Philanthropy Summit
South Sound Planned Giving Council
The Mockingbird Society
Thurston Community Television

Thurston County Volunteer Legal Services
TVW
Dispute Resolution Center of Thurston County

ECONOMIC OPPORTUNITY

ASHHO Cultural Community & Job Training Center (CCJTC)
Morningside
Northwest Cooperative Development Center
Northwest Institute for Leadership & Change
Olympia Community Solar
Pacific Mountain Workforce Development
Sound Learning
Thurston Asset Building Coalition
Thurston County Chamber Foundation
Thurston Economic Development Council

EDUCATION & YOUTH

4-H of Mason County
All Kids Win
Angels for Angels
Boys & Girls Club of Chehalis
Boys & Girls Clubs of South Puget Sound
Boys & Girls Clubs of Thurston County
Central Washington University
Child Care Action Council
Cispus Learning Center
Community Youth Services
Creative Theatre Experience
DigiPen Institute of Technology
Eastern Washington University
Family Education and Support Services
Garden-Raised Bounty
Girl Scouts of Western Washington
Girls on the Run West Sound
Grand Canyon University

Hands-On Personal Empowerment
Mason County HOST
Northwest University
North Thurston Education Foundation
Occidental College
Ocosta School District
Olympia Kiwanis Foundation
Olympia School District Education Foundation
Oregon State University
Pacific Education Institute
PARC Foundation of Thurston County
Pizza Klatch
Portland State University
Pope John Paul II High School
Pope's Kids Place
Reach Out and Read, Inc.
Rochester Organization of Families
Saint Martin's University
Seattle University
Shelton Family Center
South Puget Sound Community College
South Puget Sound Community College Foundation
South Sound Parent to Parent
South Sound Reading Foundation
South Sound GREEN TOGETHER!
Southern Adventist University
Stanford University
STEM Partners Washington
Tacoma Community College
The College of Idaho
The Evergreen State College
TOGETHER!
Toys for Tots Foundation
United Youth Movement
University of Idaho
University of Utah
University of Washington
Washington State University

Washington Trafficking Prevention
Wayne State University
Western Washington University
Whitworth University
Williams College
Yale University
Yelm Dollars For Scholars
YWCA of Olympia
Wild Grief

ENVIRONMENT & ANIMAL WELFARE

Capitol Land Trust
Chehalis Foundation
Chehalis River Basin Land Trust
Concern for Animals
Deschutes Estuary Restoration Team
Friends of Schafer and Lake Sylvia State Parks (FOSLS)
Hood Canal Salmon Enhancement Group
Humane Society of Mason County
Kitten Rescue of Mason County
LOTT Alliance-Regional Services & WET Center
Mason Conservation District
Nisqually Land Trust
Nisqually River Foundation
Olympia Coalition for Ecosystems Preservation
Olympia Community Solar
South of the Sound Community Farm Land Trust
South Puget Sound Salmon Enhancement Group
South Sound Estuary Association
The Conservation Connection
The Noel Cole Fish & Wildlife Project
Thurston Climate Action Team
Washingtons National Park Fund

HEALTH & WELLNESS

A Gift for Special Children
Bounty for Families
Garden Raised Bounty (GRuB)
Fred Hutchinson Cancer Research Center
Health and Hope Medical Outreach
HeartStrides Therapeutic Riding
Lewis County Autism Coalition
Mason General Hospital Foundation
Northwest Kidney Centers
Panorama
Pierce County AIDS Foundation (PCAF)
Providence Southwest Washington Foundation
Shriners Hospitals for Children
South Sound YMCA
Tenino Community Service Center
The Noel Cole Fish & Wildlife Project
The Olympia Free Clinic
Wild Grief
Wood River Community YMCA
YMCA of Greater Seattle

HOUSING & HUMAN SERVICES

Build a Bus Home
Catholic Community Services of Western Washington
Chaplains Association for Public Safety Thurson County
Catholic Community Services of Western Washington
CIELO
Community Action Council of Lewis, Mason & Thurston Counties
Community Lifeline

Consejo Counseling & Referral Service
Dry Tikes & Wet Wipes
Outdoors for our Heroes
Faith In Action West Sound
Family Support Center of South Sound
Habitat for Humanity of Mason County
Homes First
Innovations Human Trafficking Collaborative
Interfaith Works Emergency Overnight Shelter
Kokua
Lewis County Gospel Mission
North Mason Food Bank
North Mason Resources
Olympia Mutual Aid Partners
Panza
Partners in Prevention Education
Rebuilding Together Thurston County
SafePlace
Senior Services for South Sound
Shelton Youth Connection
SideWalk
Society of St. Vincent de Paul
South Beach Christian Outreach
South Puget Sound Habitat for Humanity
The Crisis Clinic of Thurston and Mason Counties
The Mayday Foundation
The Moore Wright Group
The Saints' Pantry Food Bank
Thurston County Food Bank
Thurston Housing Land Trust
Turning Pointe Survivor Advocacy Center
Union Gospel Mission
Association of Olympia
United Way of Lewis County
White Pass Community Services Coalition

New Fund Spotlight

THE CHIEF JUSTICE GERRY ALEXANDER ENDOWMENT FOR TVW

One of the types of funds we manage is Agency Funds. This type of fund helps nonprofit organizations build long-term assets. Today, the Community Foundation of South Puget Sound manages 21 Agency Funds totaling more than \$6.75 million. We are pleased to announce one of our new agency funds in 2021, the Chief Justice Gerry Alexander Endowment.

TVW approached the Community Foundation when they decided to establish an endowment because they were looking for a management model that made sense for their public-focused mission—and their desire to give back. “They have the resources and the expertise to manage our funds responsibly. But also, we wanted a piece of our investment to benefit the larger community,” TVW president and CEO Renee Radcliff Sinclair says.

In April 1995, TVW ran its first program: arguments before the Washington State Supreme Court. Justice Gerry Alexander, who later served as chief justice of the court, was instrumental in allowing their cameras in.

“It was really Justice Alexander who drove that decision to allow cameras in the state Supreme Court chambers,” Sinclair says. In honor of his commitment to transparency in government and to the role he played in this sea change, TVW named the endowment for him.

This endowment was seeded through the sale of a company TVW founded about a decade ago that developed an efficient method for web streaming. TVW will receive payments on that endowment that will allow them to tend to needs aligned with their mission, such as ongoing equipment and operational needs, support for statewide educational programs, and the high-quality programming and coverage they’ve established over the past 27 years.

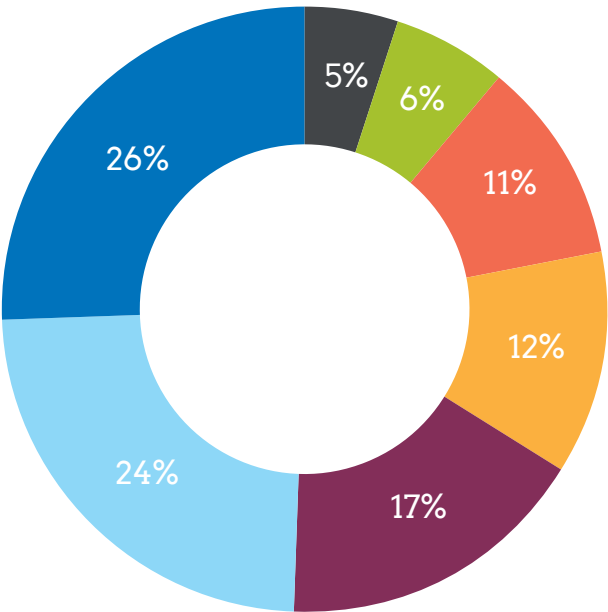


Photo Courtesy of TVW

2021 Financials

Assets by Fund Type

- \$10.3M Designated
- \$9.7M Unrestricted
- \$6.9M Agency
- \$4.8M Field of Interest
- \$4.2M Scholarship
- \$2.2M Donor Advised
- \$2M Operating & Special Projects

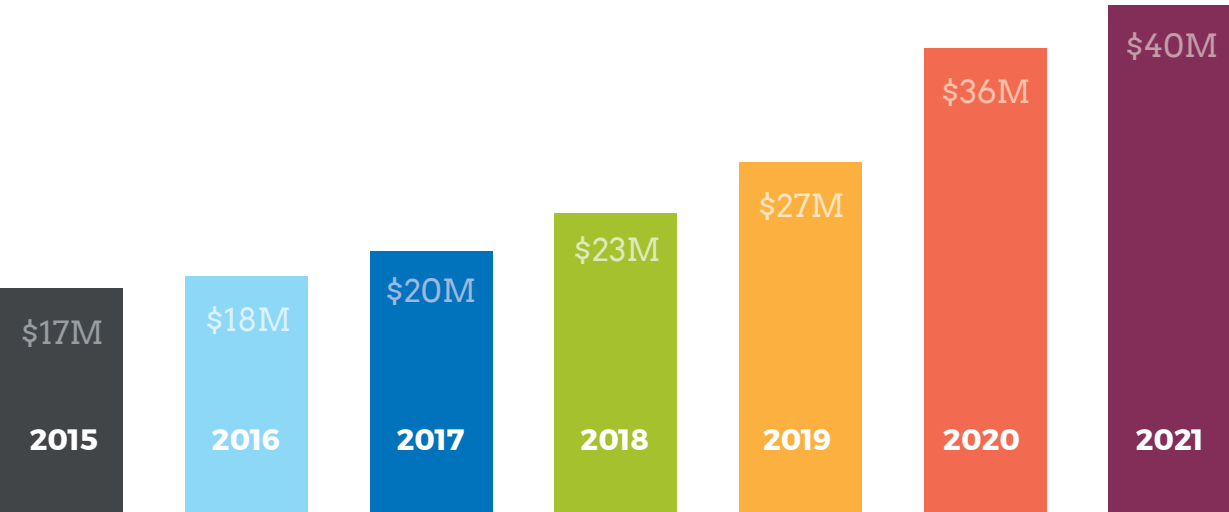


Assets

Cash & cash equivalents	\$299,240
Pledge receivable	\$12,859
Prepaid expenses	\$8,499
Investments	\$12,088,225
Endowment Investments	\$27,739,932
Total Assets	\$40,148,755

Liabilities & Net Assets

Accounts payable	\$8,145
Grants payable	\$87,095
Accrued liabilities	\$27,768
Funds held for other agencies	\$7,217,735
Total Liabilities	\$7,340,743
Net Assets	\$32,808,012
Total Liabilities & Net Assets	\$40,148,755



2021 Funds

DONOR ADVISED

Charneski L & E Bottling Co
Holiday Support Fund
Chet Rhodes Family
Chehalis Area Fund
Clees Family Fund
Darren Nienaber Fund
David & Nancy Bayley
Charitable Fund
Dennis and Joan Peterson
Family Advised Fund
Don Rhodes Family Fund
Fox-Dobbs Family Fund
Greater Yelm Area Fund
Greene Realty Giving Fund
Hannah S. McDonald
Endowment
Jack & Luellen Charneski
Charitable Fund
Jim Lazar Fund for Clean
Energy, Environment, &
Engagement
Kimberly Ellwanger Fund for
Women and Children
OHS Foundation Fund
Patricia O'Donnell & Myra
Butts Fund
Powerful With Love Fund
Rachel Corrie Memorial
Fund
Ray T. McLane Family Fund
Robert and Lynn Brunton
Family Advised Fund
Schorno Family Yelm
Scholarship Fund
The Monohon Initiative
Fund
Thurston County Children,
Youth, & Families Fund
Thurston Mason Medical
Alliance Fund
Vannerson Family Advised
Fund
Warjone Family Advised
Fund
Wubbena Family
Foundation

DESIGNATED PURPOSE

Build for Tomorrow Fund
Community Foundation
Administrative
Endowment
D. Michael Sharar Water
Education Fund
Harold & Inge Marcus
Designated Fund
Jean T. Dawkins Fund
Marguerite Lynch Bishop
Fund
Norma Schuiteman
Sustaining Fund
Patty Mulhern Fund for
Nurses
Ruth R. Furman Little Red
School House Fund
William A. Lovett Fund
Yelm High School
Community Scholarship
Fund

AGENCY

Andy Crow Wurlitzer Organ
Endowment
Boys & Girls Clubs of
Thurston County Club
Graduate Endowment
Fund
Boys & Girls Clubs of
Thurston County Club
Member Endowment
Fund
Boys & Girls Clubs of
Thurston County Major Gift
Fund
Concern for Animals
Grotsky-Brodoff Family
Endowment for Pizza
Klatch
Hands On Children's
Museum Endowment
James Andrew Adams
Quixote Communities
Fund
Mason General Hospital
Foundation Endowment
Nisqually Land Trust
Endowment

NOVA School Endowment
Olympia Kiwanis
Foundation Scholarship
Fund
Pam Toal Leadership Fund
PARC Foundation
Endowment
PARC Foundation Jocelyn
Dohm Classical Choral
Fund
Senior Services for South
Sound Endowment
Senior Services for South
Sound Brighter Days
Program Fund
The Chief Justice Gerry
Alexander Endowment for
TVW
Thurston Community
Television Endowment
United Way of Thurston
County Endowment
YWCA of Olympia Women's
Community Endowment

GENERAL UNRESTRICTED

Barbara McPherson
Endowment
Charles L. Trowbridge
Memorial Endowment
Coldwell Banker Evergreen
Olympic Realty Fund
Community Foundation
Program Endowment
Gail Wyman Endowment
Irving A. Lassen Foundation
Vannerson Family Endowed
Fund

FIELD OF INTEREST

Bruno and Evelynne Betti
Foundation Fund
Capital City Marathon
Foundation Fund
Community Foundation
Disaster Relief Fund
Community Foundation
Fund for the Environment
Community Youth Fund
Ina Fennell Fund
Jack and Neddie Rose
Farrington Endowment
Jane Larsen Music Fund
Jane Larsen Youth
Endowment
Jesse R. Roberts Fund
Katherine Hayes Memorial
Fund
Thurston County Dental
Access Network (TCDAN)
Fund
Thurston County School
Retirees Association
Walter A. Bratton Youth
Endowment

SCHOLARSHIP

Amanda Winters
Scholarship
Andrew William Oakes
Scholarship
Cody Brown Memorial
Scholarship Endowment
Coldwell Banker Evergreen
Olympic Realty
Scholarship
Dan R. Montgomery
Scholarship
Donald & Patricia Ernst
Olympia Kiwanis Endowed
Scholarship
Ecosystems Scholarship
Elizabeth Libby White
Memorial Scholarship
Fund
Ellen Anderson deMoise
Scholarship
Grade 13 Fund
Griffin School Tiernan-
Keigher Scholarship
Henry J. Melusky Memorial
Scholarship
John & Opal McGimpsey
Scholarship

Keith Skogsberg Memorial
Scholarship
L & E Bottling Company
Scholarship
Learning Seed Foundation
Scholarship Endowment
Learning Seed Foundation
Scholarship Fund
Mike and Sharon Welsh
Scholarship Fund
Next Step Scholarship
OHS Faculty Memorial
Scholarship Fund
OHS Foundation Alfred
Lewis Memorial
Scholarship
OHS Foundation Laurie
Callaghan Memorial
Scholarship
Pielak Family Legacy Fund
Richard J. Geiger Memorial
Scholarship
Robert and Kathryn Wolf
Memorial Scholarship
Stellajoe Staebler
Scholarship
Thurston Climate Action
Scholarship Fund

Thurston STRONG

Crucial funding became available for local nonprofits through the American Rescue Plan Act (ARPA) in 2021. As Thurston County developed a plan to distribute these funds, several local nonprofits approached our county commissions to request our involvement in the fund distribution because they trusted us to do so equitably. The county listened and selected us to administer \$810,000 in ARPA COVID relief. We are pleased to share that in 2021, we distributed \$227,500 in ARPA funds, and we will finish distributing the remaining \$582,500 in early 2022! These funds are already helping local organizations recover from the last two years of venue closures, volunteer loss, fundraiser cancellations, rising costs, COVID-19 adaptations, technology challenges, and staffing challenges so that they can continue to serve and strengthen our communities.

Board of Directors

CHAIR Jim Morrell, <i>Peninsula Credit Union, President & CEO</i>	Brent Dille, <i>Dille Law, PLLC, President</i>	Melanie Bakala, <i>Bakala Insurance Agency, Owner</i>
VICE CHAIR Katie Rains, <i>WA State Dept of Agriculture, Food Policy Advisor</i>	Charli Terminelli, <i>ACU, Business Development Manager</i>	Renee Radcliff Sinclair, <i>TVW, President & CEO</i>
TREASURER Josh Deck, <i>Olympia Federal Savings, EVP COO</i>	Craig Ottavelli, <i>OrgSupport, Founder</i>	Teresa Loo, <i>Tacoma Power, Wildlife & Lands Manager</i>
SECRETARY Janet McLane, <i>State Court Administrator, Retired</i>	Dan Jones, <i>NorthAmerica Talk/ThurstonTalk, CEO, Founder</i>	Zahid Chaudhry, <i>People of Color Community Coalition, Founder</i>
PAST CHAIR Mary Williams, <i>Social Services Administrator, Retired</i>	Kelsey Hulse, <i>Puget Sound Energy, Tribal Relations Manager</i>	

Staff

Adele Peers, <i>Program Officer</i>	Mary Lam, <i>Philanthropy & Communications Officer</i>	Mindie Reule, <i>President & CEO</i>
Daisha Versaw, <i>Director of Community Programs</i>	Melissa Rosscup, <i>Program Coordinator</i>	Valerie Piper, <i>Director of Finance</i>

Meet Our New Philanthropy & Communications Officer



We're pleased to introduce you to Mary Lam as the newest member of the Community Foundation! Serving diverse non-profit teams since 2013, she has developed skills in project and event management, fund development, and the art of building lasting relationships through empathy and clear communication. She holds a MA of Science in Mental Health Counseling from Palm Beach Atlantic University, where she deepened her knowledge about social and cultural diversity, mental health counseling, and how to build thriving community connections. As the daughter of Latino immigrants who landed in Miami, Florida, in the early '90s, she often served as a translator for her family, always honoring her family's wish to be a changemaker through education and dedication. Her experiences growing up helped her develop a deep understanding of cultural humility that profoundly inspires her work today.

Together is How Change Happens

When COVID-19 challenged us as a community in 2020, we saw first-hand how working together made us stronger. And when people looked to the Community Foundation of South Puget Sound to tie efforts together quickly—from understanding the challenges on the ground to resolving them with philanthropic support—we relied on the willingness of many to meet the moment with us.

We are incredibly grateful for the ripple effect that we witnessed as we all joined together to support one another and not only adapt to the demands of the “new normal” with resilience but to champion the building back of vibrant communities in Thurston, Mason, and Lewis Counties! We are beyond grateful for this outpouring of generosity far and wide in our region.

- THANK YOU to those who love and care for our future generations** by leaving charitable gifts in your will.
- THANK YOU to our fundholders** who actively take a role in philanthropy.
- THANK YOU to the many donors and sponsors** who gave generously through gifts of all sizes.
- TOGETHER we are all part of the ripple effect** of generosity and love for the people and the lands of the South Puget Sound.



212 Union Ave SE, Suite 102
Olympia, WA 98501

Contact us
[360.705.3340](tel:360.705.3340)

Visit our website
thecommunityfoundation.com



In 2021, the Community Foundation of South Puget Sound co-Launched Leave 10 South Sound with the Greater Tacoma Community Foundation, the Sound Sound Planned Giving Council, and other partners. This initiative invites every resident in the South Puget Sound to consider leaving 10% of their will or estate to support the causes they care about through a planned gift. Get involved today by reaching out to our team for information and resources. We have some exciting events happening locally in the fall of 2021 and beyond!