



A Bright & Beautiful October

Hello, dear friends.

Welcome to the October 2023 edition of the Lavender and Time newsletter. It's a colourful month, as spring is in full bloom and nature displays its beauty, bringing new flowers and greenery.

Lavender and Time have a wonderful selection of items to inspire your creativity and brighten up your projects this month. Whether you are into sewing, quilting, embroidery, or knitting, you will discover something to suit your taste and skill level.

Here are some of the highlights of what we have in store for you this month:

- **Fabrics:** We showcase an array of beautiful fabrics in various colours, patterns, and textures. You can also mix and match fabrics from different collections to create your own unique look.
- **Threads:** We provide a broad spectrum of threads for different purposes and techniques. You can find embroidery thread, quilting thread, sewing thread, and more. Some of our new arrivals include metallic thread and variegated thread. We are also offering a special deal on DMC threads, which are high-quality and durable threads for embroidery and cross-stitch.
- **Notions:** We offer a variety of notions to help you with your projects. You can find scissors, rotary cutters, pins, needles and much much more.

In addition to these products, we also offer classes where you can learn new skills or improve your craft with the help of our experienced and friendly teachers.



063 551 6909



info@lavenderandtime2.co.za



@lavenderandtime80



@lavenderandtime



@lavendertime3



PFAFF is a leading brand of sewing machines that offers quality, innovation, and creativity for all your sewing and embroidery needs.

PFAFF machines are designed to give you perfect results every time, with features such as IDT System, Stitch Creator, Ribbon Stitches, Floating Stitches, and more.

PFAFF machines also come with a wide range of accessories, software, and designs that can enhance your sewing and embroidery experience.

Whether you want to create quilts, garments, home décor, or embroidery projects, **PFAFF** has the right machine and the right tools for you.

As a **PFAFF** dealer, we can provide you with the best products and services. We look forward to seeing you soon and helping you achieve your sewing and embroidery goals

PFAFF
Perfection starts here.™

with **PFAFF**.

lancaster1@pfaffsa.co.za or 011 450 3914



DMC BARGAIN!

Lavender and Time is the place to be
If you love to sew or embroider with glee
We have the best selection of DMC threads
In hundreds of colours and effects to bring out the
beauty of your designs
DMC threads are made of 100% cotton
They are soft, smooth, and durable for any kind of
stitch
They are colourfast and fade resistant, so your
creations will last



Metallic Threads

1 @ R40
5 @ R170
10 @ R300

Satin Threads

1 @ R30
5 @ R140
10 @ R250

Standard Threads

1 @ R20
5 @ R70
10 @ R100



063 551 6909



info@lavenderandtime2.co.za



@lavenderandtime80



@lavenderandtime



@lavendertime3

THIS AND THAT

We stock the best quality notions for all your sewing projects! Lavender and Time is where you will find a variety of items, such as quilters tape, mini circular 4 pc template sets, bias markers, quilters quarters, self erasing and water erasable marking pens, crochet hooks, scissors and more.



063 551 6909



info@lavenderandtime2.co.za



@lavenderandtime80



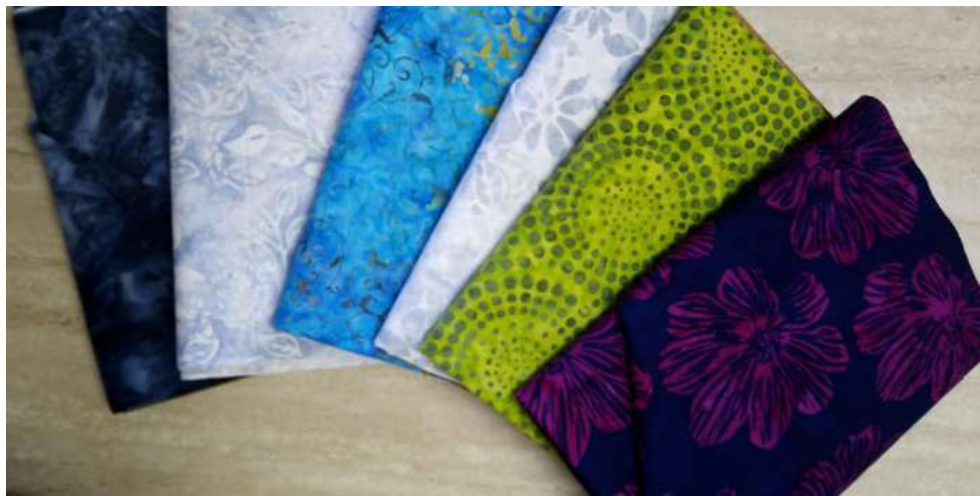
@lavenderandtime



@lavendertime3

BATIK FABRICS

Are you looking for a unique and beautiful fabric to make your next quilt, garment, or accessory? Do you love the rich colours and intricate patterns of batik fabrics? Then you should visit Lavender and Time, your one-stop haberdashery shop



063 551 6909



info@lavenderandtime2.co.za



@lavenderandtime80



@lavenderandtime



@lavendertime3

WOOLS

Are you a fan of knitting or crochet? Do you love to create cozy and colourful projects with quality yarns? Then you should check out our amazing selection of wools.

Lavender and Time has a variety of wools to suit your needs and preferences. Whether you want to make a scarf, a sweater, a blanket, or a hat, you will find the perfect wool for your project.

Here are some of the wools that you can find at Lavender and Time:

- Spylo: This is a double knit wool . Spylo has a beautiful gradient effect that creates stunning stripes and patterns. .**
- Shabang: This is another double knit wool Shabang has a soft and smooth texture that is ideal for garments and accessories.**
- Pullskein: This is a classic double knit wool Pullskein is a versatile and durable wool that can be used for any project.**

Lavender and Time also offers a large variety of knitting needles and crochet hooks.



WOOLS

Spylo



Shabang



Pullskein



063 551 6909



info@lavenderandtime2.co.za



@lavenderandtime80



@lavenderandtime



@lavendertime3

Mosaic art

Are you looking for a unique and beautiful way to decorate your home or office?

Do you want to add some colour and personality to your space?

Do you love art and crafts?

If you answered yes to any of these questions, then you should check out the mosaic art for sale at Lavender and Time Haberdashery!



Mosaic art can also benefit children in many ways, such as:

It enhances their creativity and self-expression,

It improves their fine motor skill and hand-eye co-ordination.

It develops their pattern recognition and problem solving skills.

It increases their focus and concentration.



063 551 6909



info@lavenderandtime2.co.za



@lavenderandtime80



@lavenderandtime



@lavendertime3

Elle Booties Pattern

7197

0 - 12 months

Marble

elle



063 551 6909



info@lavenderandtime2.co.za



@lavenderandtime80



@lavenderandtime



@lavendertime3

IMPORTANT NOTE:

Unless yarn specified is used, SAPROTEX cannot accept responsibility for the finished work.

Owing to printing restrictions the colour reproduction is matched as closely to the yarn as possible.

The quantity of yarn is based on average requirements and is therefore an estimate.

The instructions are given for the smallest size, with the larger sizes in brackets; where only one figure is given, it applies to all sizes.

SAVE TIME, TAKE TIME, CHECK TENSION. For best results it is essential to obtain the correct tension. If there are too few stitches on your test swatch, use thinner needles; if there are too many stitches, use thicker needles.

MEASUREMENTS

Original booties worked in size 3-6 months.

To fit ages	0 - 3 months	3 - 6 months	6 - 9 months	9 - 12 months
-------------	--------------	--------------	--------------	---------------

MATERIALS

1. CABLED BOOTEES - Marble	Sky 03	50g ball X	1	1	1	1
One pair 4mm knitting needles						
One cable needle						
2. RIB BOOTEES - Marble	Peapod 74	50g ball X	1	1	1	1
One pair 3,5mm knitting needles						
3. PINK SHOES - Marble	Hush 53	50g ball X	1	1	1	1
2 buttons						
One pair each 3,25mm and 4mm knitting needles						
One cable needle						
One stitch holder						
4. RIBBON BOOTEES - Marble	Orchid 32	50g ball X	1	1	1	1
One pair each 3,25mm and 4mm knitting needles						
One stitch holder						
Ribbon						

TENSION

22sts and 30 rows = 10cm over stocking stitch using 4mm needles.

ABBREVIATIONS

C2B(F) = knit into back(front) of second stitch on left hand needle, then knit first stitch, slipping both stitches off the needle together

cont = continue

dec = decrease

fol(s) = follow(s)ing

inc = increase

k = knit

K1B = knit one below

k(p)w = knit(purl)wise

m st = moss stitch

M1 = make one stitch, pick up loop between last and next stitch and work into the back of this loop

MB = make bobble: Knit into front, back and front of next stitch, turn and k3sts, turn and p3sts, turn and k3sts, turn and SKTPO

p = purl

patt(s) = pattern(s)

rem = remain(ing)

rep = repeat

RW = ribwise

R(W)SF = right(wrong) side facing

R(W)SR = right(wrong) side row

SKPO = slip one, knit one, pass slipped stitch over

SKTPO = slip one, knit two together, pass slipped stitch over

sl = slip

st(s) = stitch(es)

st st = stocking stitch

T2B = slip next st onto a cable needle and hold at back of work, k1 st from left hand needle, then p1 st from cable needle

T2F = slip next stitch onto a cable needle and hold at front of work, p1 st from left hand needle, then k1 st from cable needle

T6L = slip next 4sts onto a cable needle and hold at front of work, k2sts from left hand needle, slip the 2 p sts on the cable needle back to left hand needle and p these 2sts, then k2sts from cable needle

tog = together

yfd = yarn forward

INSTRUCTIONS**1. CABLED BOOTEES (Make 2):**

Using 4mm needles cast on 24(32;36;44)sts.

1st row: RSF, k.

2nd row: K1, M1, k10(14;16;20)sts, M1, k2, M1, k10(14;16;20)sts, M1, k1 = 28(36;40;48)sts.

3rd row: K.

4th row: K1, M1, k11(15;17;21)sts, M1, k4, M1, k11(15;17;21)sts, M1, k1 = 32(40;44;52)sts.

5th row: K.

6th row: K1, M1, k12(16;18;22)sts, M1, k6, M1, k12(16;18;22)sts, M1, k1 = 36(44;48;56)sts.

K 6(8;8;10) rows.



SHAPE INSTEP:

1st row: RSF, k11(15;17;21)sts, (p2, k2) 3 times, p2, k2tog, turn.

2nd row: Sl1pw, (k2, p2) 3 times, k2, k2tog, turn.

3rd row: Sl1pw, p2, T6L, p2, k2, p2, k2tog, turn.

4th row: As 2nd row.

5th row: Sl1pw, (p2, k2) 3 times, p2, k2tog, turn.

6th row: As 2nd row.

7th row: As 5th row.

8th row: As 2nd row.

9th row: Sl1pw, p2, k2, p2, T6L, p2, k2tog, turn.

10th row: As 2nd row.

11th row: As 5th row.

12th row: As 2nd row = 24(32;36;44)sts.

13th row: Sl1pw, (p2, k2) 3 times, p2, k to end.

14th row: P1, (K1B, p1) 2(4;5;7) times, (k2, p2) 3 times, k2, p1, (K1B, p1) to end.

15th row: K5(9;11;15)sts, p2, T6L, p2, k2, p2, k to end.

16th row: As 14th row.

17th row: K5(9;11;15)sts, (p2, k2) 3 times, p2, k to end.

18th row: As 14th row.

19th row: As 17th row.

20th row: As 14th row.

21st row: K5(9;11;15)sts, p2, k2, p2, T6L, p2, k to end.

22nd row: As 14th row.

23rd row: As 17th row.

24th row: As 14th row.

Next row: (K1, p1) to end.

Rep last row for 8(8;10;10)cm ending with a WSR, then cast off all sts RW.

TO MAKE UP:

Sew sole and back seam, reversing seam for foldover.

2. RIB BOOTEES (Make 2):

Using 3,5mm needles cast on 25(33;37;45)sts.

1st row: RSF, k.

2nd row: P1, M1pw, p10(14;16;20)sts, M1pw, p3, M1pw, p10(14;16;20)sts, M1pw, p1 = 29(37;41;49)sts.

3rd row: K.

4th row: P1, M1pw, p11(15;17;21)sts, M1pw, p5, M1pw, p11(15;17;21)sts, M1pw, p1 = 33(41;45;53)sts.

5th row: K.

6th row: P1, M1pw, p12(16;18;22)sts, M1pw, p7, M1pw, p12(16;18;22)sts, M1pw, p1 = 37(45;49;57)sts.

Next row: K.

Next row: P1, (K1B, p1) to end.

Rep last 2 rows 2(3;3;4) times more.

SHAPE INSTEP: **Next row:** RSF, k22(27;30;35)sts, k2tog, turn.

1ST AND 3RD SIZES ONLY: **Next row:** Sl1kw, (K1B, p1) 3(5) times, K1B, p2tog, turn.

Next row: Sl1kw, k7(11)sts, k2tog, turn.

2ND AND 4TH SIZES ONLY: **Next row:** Sl1pw, (p1, K1B)

4(6) times, p1, k2tog, turn.

Next row: Sl1kw, k9(13)sts, k2tog, turn.

ALL SIZES: Rep last 2 rows for appropriate sizes 4 times more, then 1st row once = 25(33;37;45)sts.

Next row: Sl1kw, k to end.

Next row: WSF, p1, (K1B, p1) to end.

Next row: K.

Rep last 2 rows for 4(5;5;6)cm from end of instep ending with a WSR, then cast off all sts.

TO MAKE UP:

Sew sole and back seam.

3. PINK SHOES (Make 2):

SOLE:

Using 4mm needles cast on 7(9;11;13)sts.

1st row: RSF, k1, (p1, k1) to end.

This row will now be referred to as **moss stitch** (m st).

Next row: Work in m st patt. Work 5 rows m st patt, inc 1 st at each end of next and every alt row 3 times in all = 13(15;17;19)sts. Patt 7(9;9;11) rows straight. Patt 19(7;7;7) rows, dec 1 st (= work 2tog) at each end of next and every 6th row until there are 5(11;13;15)sts.

2ND, 3RD AND 4TH SIZES ONLY: Patt 12(16;20) rows, dec 1 st at each end of every 4th row 3(4;5) times = 5sts.

ALL SIZES: Patt one row, then cast off all sts in patt.

UPPER:

RSF, using 4mm needles, pick up and k5(7;9;11)sts along cast on edge of sole.

Next row: Inc pw into first st, p1(2;3;4)sts, inc pw into next st, p to last st, inc pw into last st = 8(10;12;14)sts.

Next row: Inc kw into first st, k2(2;2;3)sts, inc kw into next st, k0(2;4;4)sts, inc kw into next st, k2(2;2;3)sts, inc kw into last st = 12(14;16;18)sts.

Next row: WSF, p0(1;2;3)sts, k5, p2, k5, p0(1;2;3)sts.

Next row: Inc kw into first st, p3(4;5;6)sts, C2B, C2F, p3(4;5;6)sts, inc kw into last st = 14(16;18;20)sts.

Next row: P1(2;3;4)sts, k3, T2F, p2, T2B, k3, p1(2;3;4)sts.

Next row: Inc kw into first st, k0(1;2;3)sts, p2, T2B, C2B, C2F, T2F, p2, k0(1;2;3)sts, inc kw into last st = 16(18;20;22)sts.

Next row: P2(3;4;5)sts, k1, T2F, k1, p4, k1, T2B, k1, p2(3;4;5)sts.

Next row: Inc kw into first st, k1(2;3;4)sts, T2B, p1, T2B, k2, T2F, p1, T2F, k1(2;3;4)sts, inc kw into last st = 18(20;22;24)sts.

Next row: P4(5;6;7)sts, k2, p1, k1, p2, k1, p1, k2, p4(5;6;7)sts.

Next row: K3(4;5;6)sts, MB, p1, T2B, p1, k2, p1, T2F, p1, MB, k3(4;5;6)sts.

Next row: P3(4;5;6)sts, k2, p1, k2, p2, k2, p1, k2, p3(4;5;6)sts.

DIVIDE FOR UPPER: RSF, inc kw into first st, k4(5;6;7)sts,



MB, turn. Leave rem 12(13;14;15)sts on a holder. Cont on the rem 7(8;9;10)sts as folls:

Next row: P2tog, p to end = 6(7;8;9)sts.

Next row: K to last 2sts, k2tog = 5(6;7;8)sts.

Next row: P.

Next row: K.

The last 2 rows sets the patt for **stocking stitch** (st st). Work 18(20;24;30) more rows in st st, then cast off all sts. RSF, rejoin yarn to and pick up sts from holder. Cast off 5sts, sl rem st on right hand needle to left hand needle and MB into next 2sts tog, k to last st, inc kw into last st = 7(8;9;10)sts.

Next row: P to last 2sts, p2tog = 6(7;8;9)sts.

Next row: K2tog, k to end = 5(6;7;8)sts.

Work 20(22;26;32) rows in st st, then cast off all sts.

UPPER EDGING: RSF, using 3,25mm needles, pick up and k20(22;26;32)sts along straight edge of side of shoe, pick up and k10(12;12;14)sts around shaped edge and 20(22;26;32)sts along straight edge of other side of shoe = 50(56;64;78)sts.

Next row: K.

Next row: K20(22;26;32)sts, SKPO, k6(8;8;10)sts, k2tog, k to end = 48(54;62;76)sts.

LEFT SHOE STRAP: Cast off 10(12;14;16)sts, *k2, sl the 3sts on right hand needle onto a safety pin, then cast off rem sts. RSF, pick up sts from safety pin and k every row until strap fits to other side ending with a WSR.

Next row: K1, yfd, k2tog.

K 2 rows, then cast off all sts.

RIGHT SHOE STRAP: Cast off to last 12(14;16;18)sts, then work as for left shoe strap from * to end.

TO MAKE UP:

Sew back seam and then sew the sole into place. Sew on buttons.

4. RIBBON BOOTEES (Make 2):

SOLE:

Using 4mm needles cast on 7(9;11;13)sts and k 2 rows.

Next row: K1, M1, k to last st, M1, k1 = 9(11;13;15)sts.

Next row: K.

Rep last 2 rows once more = 11(13;15;17)sts.

Next row: K1, M1, k to last st, M1, k1 = 13(15;17;19)sts.

(Tip: For a neat sewing edge, work the dec sts one stitch in from the edge).

K7(9;9;11) rows straight. K19(7;7;7) rows dec 1 st (= work 2tog) at each end of next and every 6th row until there are 5(11;13;15)sts.

2ND, 3RD AND 4TH SIZES ONLY: K12(16;20) rows, dec 1 st at each end of every 4th row 3(4;5) times = 5sts.

ALL SIZES: K one row, then cast off all sts.

UPPER:

RSF, using 4mm needles, pick up and k5(7;9;11)sts along cast on edge of sole.

Next row: Inc pw into first st, p to last st, inc pw into last st = 7(9;11;13)sts.

Next row: Inc kw into first st, k to last st, inc kw into last st = 9(11;13;15)sts.

Next row: P.

Next row: K1, M1, k to last st, M1, k1 = 11(13;15;17)sts.

Rep last 2 rows 3 times more = 17(19;21;23)sts.

Next row: P.

Next row: K5(5;6;6)sts, (yfd, k2tog) 4(5;5;6) times, k to end.

Next row: P.

DIVIDE FOR UPPER: RSF, k1, M1, k4(5;6;7)sts, turn. Leave rem 12(13;14;15)sts on a holder. Cont on the rem 6(7;8;9)sts as folls:

Next row: P2tog, p to end = 5(6;7;8)sts.

Next row: K3(4;5;6)sts, yfd, k2tog.

Next row: P.

Next row: K.

Next row: P.

Rep last 4 rows 3(4;5;6) times more.

1ST AND 4TH SIZES ONLY: Rep first 2 rows once more.

ALL SIZES: Cast off all sts. RSF, rejoin yarn to and pick up sts from holder. Cast off 7sts, k to last st, M1, k1 = 6(7;8;9)sts.

Next row: P to last 2sts, p2tog = 5(6;7;8)sts.

Next row: K1, yfd, k2tog, k2(3;4;5)sts.

Next row: P.

Next row: K.

Next row: P.

Rep last 4 rows 3(4;5;6) times more.

1ST AND 4TH SIZES ONLY: Rep first 2 rows once more.

ALL SIZES: Cast off all sts.

UPPER EDGING: RSF, using 3,25mm needles, pick up and k18(20;24;30)sts along straight edge of side of bootie, pick up and k8(10;10;12)sts around shaped edge and 18(20;24;30)sts along straight edge of other side of bootie = 44(50;58;72)sts.

Next row: K.

Next row: K18(20;24;30)sts, SKPO, k6(8;8;10)sts, k2tog, k to end = 42(48;56;70)sts. Cast off all sts.

TO MAKE UP:

Sew back seam and then sew the sole into place. Thread ribbon through eyelet holes if desired.

Original booties knitted by: Tanja Alldred.
Printed by: Saprotex International.

 **Saprotex International**
spinners of quality hand knitting yarns
visit us at: www.elleyarns.com

This leaflet is sold on condition that it is used for non-commercial purposes only, and may not be reproduced or copied either by photocopying or in any other way.
All rights are expressly reserved by Saprotex International.
elle is a registered trademark of Saprotex International.



JOIN OUR CLASSES

Still looking for a new hobby?

A way to relax?

Or a chance to make something beautiful
and useful?

Then you should join the classes held at
Lavender and Time!

Lavender and Time Haberdashery is a place
where you can learn, create, and enjoy
different kinds of crafts, such as crochet,
quilting, smocking, embroidery, and
children's sewing.

You'll love it.

Come see for yourself!



063 551 6909



info@lavenderandtime2.co.za



@lavenderandtime80



@lavenderandtime



@lavendertime3

BEGINNERS CROCHET

80 7th Ave Edenvale 063 551 6909



Lavender & Time
QUILTING AND EMBROIDERY

BEGINNERS CROCHET

Thursday
12 October
9:30 - 12:30

PFAFF
Perfection starts here.™

Lancaster1@pfaffsa.co.za | 011 450 3914



063 551 6909



info@lavenderandtime2.co.za



@lavenderandtime80



@lavenderandtime



@lavendertime3

BEGINNERS CROCHET

We are so pleased with the lovely ladies who joined our beginners crochet class on 14 September. You all did a fantastic job and we are proud of your progress. Thank you for your enthusiasm, creativity, and cooperation. We can't wait to see you again for the next lesson and continue our crochet adventure together.



063 551 6909



info@lavenderandtime2.co.za



@lavenderandtime80



@lavenderandtime



@lavendertime3

Beginners Quilting

80 7th Ave Edenvale 063 551 6909



Lavender & Time
QUILTING AND EMBROIDERY

BEGINNERS QUILTING

**Thursday
19 October
9:30 - 12:30**



PFAFF

Perfection starts here.™

lancaster1@pfaffsa.co.za 011 450 3914



063 551 6909



info@lavenderandtime2.co.za



[@lavenderandtime80](https://www.facebook.com/lavenderandtime80)



[@lavenderandtime](https://twitter.com/lavenderandtime)



[@lavendertime3](https://www.instagram.com/lavendertime3)

SMOCKING & EMBROIDERY CLASSES

80 7th Ave Edenvale 063 551 6909



Smocking & Embroidery



3, 17 & 31 October



9:30 - 12:30



Lancaster1@pfaffsa.co.za
011 450 3914



063 551 6909



info@lavenderandtime2.co.za



@lavenderandtime80



@lavenderandtime



@lavendertime3

Teddy Bear Class

In a world of dreams and make-believe,
Where teddy bears come to life and breathe,
A class awaits, with open arms,
To share their love and their many charms.
Don't miss this opportunity to join our teddy bear class.
Bookings essential!

80 7th Ave Edenvale 063 551 6909

TEDDY BEAR CLASSES



Lavender & Time
QUILTING AND EMBROIDERY
Academy School

Class 1:

Session 1, Thursday, 5 October, 9:30 - 13:30

Session 2, Thursday, 12 October. 9:30 - 13:30

Class 2:

Session 1, Saturday, 14 October, 9:30 - 13:30

Session 2, Saturday 21 October, 9:30 - 13:30

MADE WITH REAL MOHAIR R800

MADE WITH FAKE MOHAIR R400



BOOK TODAY



063 551 6909



info@lavenderandtime2.co.za



@lavenderandtime80



@lavenderandtime



@lavendertime3

PFAFF

Perfection starts here.™

Create stunning Dresden Placemat this October!

This project is perfect for anyone who loves sewing.

You can customize your placemat with different fabrics, colours, and sizes, and add some flair with applique, embroidery, or buttons.

It is a simple and fun way to make your table look beautiful and cozy.

A Dresden placemat has many benefits.

You can use up your leftover fabric scraps and turn them into something gorgeous and useful.

You can also play with different patterns and textures to create a pleasing or striking effect.

A Dresden placemat can suit any style, from traditional to modern, depending on your choice and taste.

You can also make it as a gift for someone special or as a treat for yourself.

Dresden Plate Placemats



063 551 6909



info@lavenderandtime2.co.za



@lavenderandtime80



@lavenderandtime



@lavendertime3

PFAFF

Perfection starts here.™

A Dresden placemat is not only a pretty item,
but also a handy one.

It protects your table from stains and spills
and adds warmth and comfort to your dining
experience.

It also expresses your personality and mood,
as you can pick the colours and fabrics that
match you best.

A Dresden placemat is an easy yet elegant
way to turn your table into a masterpiece.
This project is an amazing way to show off
your sewing skills and creativity.

It is a versatile and graceful design that can
be used for any occasion.

Wow your fellow sewers with your fabulous
work this September with the PFAFFSA
Dresden Placemat Project.

Happy sewing,



063 551 6909



info@lavenderandtime2.co.za



@lavenderandtime80



@lavenderandtime



@lavendertime3

Dresden Plate Place Mats

Among patchwork enthusiasts, the Dresden Plate Place Mat is a well-liked design. It can be made with fabric scraps. This design was in vogue in the 1920s and 1930s, and it remains so today. It seems that the block did not start as a full circular pattern.



The following accessories are required:

- Templates
- Fabric pieces of 10 x 10 inches (26cm x 26cm) in different colours or patterns, or two fabrics for the Dresden Plate Design
- Cotton fabric of 15 x 13 inches (38 x 31 cm) for the background
- Cotton fabric of 15 x 13 inches (38 x 31 cm) for the back
- Batting or iron on batting/wadding of 15 x 13 inches (38 x 31 cm)
- Bias binding of 55 inches (140 cm) (2.5 in wide)
- Fabric marker
- 820676096 PFAFF Bi-Level Topstitch Foot for IDT
- 820245096 PFAFF Bias Binder Presser Foot for IDT
- 821163096 PFAFF Quilt Binder Attachment
- 821289996 PFAFF Easy Snip Scissors

Preparation

1. Trace the cutting template on cardstock and cut out accurately.
2. Cut out 12 pieces of fabric from the cutting template, using any fabrics you like. You can use the same fabric for all or mix and match different ones. There are many possibilities.
3. Find the middle point of the cutting template along the vertical line and draw a line there.
4. The top part of the fabric will be wider than the bottom part. (Imagine an upside-down triangle with the tips cut off.) This line will mark the centre of your fabric.
5. On each fabric piece, mark the centre line on the wrong side with a fabric marker.
6. Fold the fabric along the centre line, with the right sides facing each other, and pin the top edge together.
7. Sew along the top edge of each fabric piece with a ¼ inch seam allowance, ending with a backstitch.
8. Turn the fabric over so that the right side is facing you and the triangle part is behind the fabric.
9. Use a point turner to make the points of the Dresden Plate Design sharp.
10. Align the fabric fold with the centre line on the back, using the actual size template. Press the fabric flat with an iron, following the actual size template. You should end up with 12 pointed petals that are identical in size and shape.



11. Put two blades together with the right sides facing each other. Pin the right side of the blade along the vertical line, with the point pointing up.
12. Sew a ¼ inch seam along the right side only, on the raw edge. Press or iron the blades as you sew them together, in one direction. This will create a circular shape for the Dresden Plate Design.

Assembling the Dresden Plate Place Mat

1. Smooth out your blades and mark the quarter points of the design. Mark the quarter points of the background fabric as well. Align the Dresden Plate circle with the background fabric quarter points.
2. Quarter mark your background fabric and align the Dresden Plate circle with the background fabric lining up the quarter points.



3. Measure the diameter of your circle and cut a cardboard template about 1cm bigger than what you require. Ensure that the circle will be well covered iron and pin into place to cover the middle of the circle.



4. Take the Dresden Plate blades circle and place it on the quarter markings of the background fabric. Pin this in place in the centre of your background fabric.
5. Inset the batting under the background fabric and make sure they are aligned. Pin them together with quilters pins.
6. Using 820676096 PFAFF Bi-Level Topstitch Foot for IDT, topstitch along the edge of every blade leaving about a 2mm from the edge of the fabric. Sew along the edge of the circle as well.
7. Cut a cardboard circle template for the centre. Cut a fabric from cardboard template that you will use for your project.
8. Place the cardboard template in the centre of the wrong side of the fabric and fold over the edges of the cardboard circle. Iron around the circle to make a fabric circle. Take out the cardboard template and put your fabric circle over your Dresden Plate design to hide the raw edges of your circle.
9. Place the backing fabric underneath the Dresden Plate Design and align all the edges and pin with quilters all over holding all three fabrics together.
10. Stitch the edges together with a small zig zag stitch, securing all the layers.
11. Remove all the quilting pins.
12. Sew the circle in place with a quilt marking presser foot as a guide.
13. Put the back fabric under the Dresden Plate Design and pin the edges with quilters, holding all three fabrics together.



Making the edges of your project smooth (Squaring off)

- Trim the edges of your project to make them even.
- Cut off any loose threads before you attach the bias binding.

Bias Binding

1. Cut a strip of 2½ inches wide.
2. Fold the strip in half along the length side, with the wrong sides together, and iron it flat.
3. On the back of your Dresden Plate Place Mat project, align the raw edges of the binding with the edge of the project.
4. Start from the middle of one of the side, pin with a few pins place to hold together.
5. Leaving a tail of about 8 -10 inches of the bias binding unsewn in the beginning. This will be the piece that you will join with the other end of the binding to finish your Dresden Plate Place Mat.
6. Using a PFAFF Bias Binder foot, sew along the long side of the fabric with a foot width seam allowance, attaching the binding to the main fabric.
7. Stop sewing a foot width or an equal distance to your seam allowance before reaching the corner. With a fabric marker, mark this point as a guide.
8. Backstitch and lift the needle and take out the Dresden Plate Place Mat from the machine. Trim off all the loose threads.
9. Fold the binding up on your project, making a 45° degree angle diagonal to the top right-hand corner.
10. Now fold the binding down, aligning the top edge and the right-side edge precisely and pin it in place. This will make a hidden 45° angle corner.
11. Put your Dresden Plate Place Mat project back under the sewing foot in the machine. Sew along the binding again with the same seam allowance and repeat this process on all edges and corners.
12. Backstitch, cut the thread, and remove your Dresden Plate Place Mat from the sewing machine.
13. When you meet up with the other end of your binding to join it, stop sewing about 8-10 inches before where you started.
14. Push together the edges of the bias binding and fold them back on both sides with the tails facing opposite directions, leaving about a 3mm gap between them. Do not push them against each other (This will create too much fabric)
15. Mark where all the folds cross each other with a fabric marker. Draw them in with a fabric marker.
16. 15. Move the top tail (Top tail) so you can see the bottom tail. Overlap them with same seam allowance that you used. Sew at a 45° angle along this seam allowance. Do not cut any extra fabric yet. Open the seams of the bias binding.
17. The right side of the fabric of the top tail of the bias binding should be facing you and the wrong side of the fabric of the bottom tail should be facing down



at a right angle. Align all edges together. Pin this together to make it easier for you to sew them together and join the binding.

18. With a fabric marker, mark a diagonal line where the fabric overlaps and forms a square. This is where you will sew. Stitch along this line. Do not cut any extra fabric yet.



19. Make sure the bias binding is not twisted and the stitching angle is right. When you fold over the bias binding, it should be the right length for your Dresden Plate Place Mat and the sewing angle should be correct.
20. If you are satisfied with your join, then trim off the extra fabric. Finish sewing the bias binding.
21. Take out your project from the machine and cut off any loose threads.
22. With the Dresden Plate Place Mat facing you, turn the binding from the back to the front of the project. Pin it in place, covering slightly over your stitch line that you used to attach the bias binding to the project. Sew just over the stitch line.
23. To make a 45° corner, stop sewing just before you reach the corner. Fold and pin the horizontal edge of the Dresden Plate Place Mat. Fold over the bias binding that you are sewing, making a 45° angle with the bottom fabric and the bias binding, leaving the needle in the fabric.
24. With the needle down, pivot the fabric and turn the corner without lifting the needle from the fabric.
25. Repeat this process around your Dresden Plate Place Mat.
26. Backstitch to secure your stitches.

Well done! You have completed your project.



PFAFF

Perfection starts here.™

October 2023 Specials

October is the perfect month to unleash your CREATIVITY with PFAFF!



PFAFF
Perfection starts here.™

Challenge your imagination!

creative™ 3.0

Spacious
Bright
Precise

www.pfaff.com

Do you love sewing and embroidery?
Do you want a machine that can do both with
ease and precision?
Then you need a PFAFF sewing machine!

PFAFF is a leading brand that has been
making quality sewing machines for over 160
years. PFAFF machines have features that
make sewing fun and easy, such as a large
embroidery area, a colour touch screen, a
built-in needle threader, and more.

Whether you want the PFAFF Creative 3, the
ultimate sewing and embroidery machine, or
the PFAFF Smarter 260c, the simple and
smart sewing machine, you will find the
perfect match for your needs and budget.

Don't miss this opportunity to get the PFAFF
Creative 3 and Smarter 260c sewing machines
at a great price.

Visit our website www.pfaffsa.co.za or call us
on 011 450 3914 or contact your nearest
accredited dealer to order yours today.
You will be amazed by what you can create
with a PFAFF!



smarter™
BY PFAFF

*Be Smart.
Be Original.*

SMARTER PFAFF™ inspired and developed by the pioneer PFAFF sewing machine brand

As Clara Wille said: "Be yourself,
everyone else is already taken!"

With smart features and a unique de-
sign, the SMARTER sewing machines
are up to the challenge of letting you express
your individuality in a price within reach.

Get your own SMARTER BY PFAFF™ machine and
begin a sewing adventure focused on you:
Your enquiries. Your passion. Your sewing.

Find more smart features at www.pfaff.com

SMARTER 260c

DON'T SETTLE FOR LESS THAN THE BEST.

PFAFF

Perfection starts here.™

Lancaster1@pfaffsa.co.za
011 450 391

Sale ends 31 October 2023

Valid for the month of October 2023



063 551 6909



info@lavenderandtime2.co.za



[@lavenderandtime80](https://www.facebook.com/lavenderandtime80)



[@lavenderandtime](https://twitter.com/lavenderandtime)



[@lavendertime3](https://www.instagram.com/lavendertime3)

PFAFF

Perfection starts here.™

• October Demo •

MACHINE DEMO



PFAFF
Perfection starts here.™

Challenge
your
imagination!

Looking for a sewing machine that can do it all, you should have a look at the PFAFF Creative 3 and the PFAFF Smarter 260c. These machines are designed to give you the best sewing and embroidery experience possible, with features that make your projects easy and fun.

The PFAFF Creative 3 is a high-performance machine that can sew and embroider with amazing speed and accuracy. It has a large embroidery area of 360 x 350 mm, a colour touch screen that lets you navigate through the different functions and settings, and a built-in needle threader that saves you time and hassle.

The PFAFF Smarter 260c is a simple and smart machine that offers a variety of stitches and smart features. It has 27 stitches including utility, decorative, and quilting stitches, a start/stop function that lets you sew without using the foot pedal, and an information system display that tells you which presser foot to use.

But don't just take our word for it. See for yourself how amazing these machines are by arranging a demo today. Call us or your nearest PFAFF dealer to book your demo. You will be impressed by what you can create with a PFAFF sewing machine!



PFAFF
Perfection starts here.™

lancaster1@pfaffsa.co.za 011 450 3914

Valid for the month of October 2023



063 551 6909



info@lavenderandtime2.co.za



[@lavenderandtime80](https://www.facebook.com/lavenderandtime80)



[@lavenderandtime](https://twitter.com/lavenderandtime)



[@lavendertime3](https://www.instagram.com/lavendertime3)

PFAFF

Perfection starts here.™

360 Degree Rotation

Holds up to 26 feet (8m) of ribbon

Easily adjusted to work with different ribbon widths



PFAFF

Perfection starts here.™

lancaster1@pfaffsa.co.za 011 450 3914

15% OFF

Add some magic to your embroidery projects! Create stunning designs with ribbons of different colours and widths. You can use the PFAFF Creative Ribbon Embroidery attachment to embellish cards, bookmarks, slippers, bracelets, and more. The possibilities are endless! It's the ultimate tool for adding ribbon to your embroidery.

PART # 821260096



063 551 6909



info@lavenderandtime2.co.za



@lavenderandtime80



@lavenderandtime



@lavendertime3

PFAFF

Perfection starts here.™

3 customizable function switches (2 side levers, 1 heel touch button)

5 programmable sewing machine functions

8 foot USB cable (2.5 m)

Ergonomic design with rubberized base

PFAFF

Perfection starts here.™

lancaster1@pfaffsa.co.za

011 450 3914

SAVE 15%

The PFAFF Multi-Function Foot Control is a revolutionary accessory that lets you control multiple functions of your machine without taking your hands off your work. You can easily perform actions such as thread cut, tie off, reverse, presser foot lift, needle up/down and pattern begin/restart with just a touch of your foot



The PFAFF Multi-Function Foot Control is the ultimate sewing companion for anyone who wants to enjoy hands-free control and convenience while sewing

It will make your sewing experience more fun, easy and efficient!

Purchase yours today!

PART # 821261096



063 551 6909



info@lavenderandtime2.co.za



@lavenderandtime80



@lavenderandtime



@lavendertime3

PFAFF

Perfection starts here.™

Quilt like a pro with the PFAFF Creative Icon 2 Quilting Kit!

PFAFF Creative Icon 2 Quilting Kit - A Quilters Dream Come True

If you love quilting you'll love this Creative Icon 2 Quilting Kit. It has everything you need to create stunning quilts with ease and precision.

Kit includes:

- A rotating self-healing cutting mat
- A rotary cutting tool & replacement blades
- A ruler set
- 2 packs of PFAFF needles specially designed for quilting



Limited Addition



With these tools you can measure, cut & sew your fabrics with accuracy and confidence

PFAFF
Perfection starts here.™

Lancaster1@pfaftsa.co.za
011 450 391

These accessories are specially designed to work with the Creative Icon 2 machine, the most advanced sewing and embroidery machine ever. Whether you're a beginner or an expert, you'll love the quality and versatility of the PFAFF creative icon 2 Quilting Kit



063 551 6909



info@lavenderandtime2.co.za



@lavenderandtime80



@lavenderandtime



@lavendertime3

HALLOWEEN

IS HERE... THE SPOOKIEST NIGHT OF THE YEAR!!

On Halloween night, many people dare to face their fears and have fun. They go out in the dark to trick-or-treat from strangers, carve scary faces on pumpkins, disguise themselves as monsters or ghosts, watch terrifying films, and explore creepy places. Halloween is also a time to unleash your creativity and imagination, as you show off your unique style and personality through your costumes and decorations. It is also a great time to enjoy some fun games with your friends and family. There are many games that you can play with items that you already have at home, or with some simple and cheap materials. Here are some examples of fun Halloween games that you can try:

- **Pumpkin Bowling:** You will need a small pumpkin and some empty plastic bottles. You can paint the bottles to look like ghosts, mummies, or monsters. Set up the bottles like bowling pins and use the pumpkin as a ball. See who can knock down the most bottles in one or two tries..
- **Spider Web Toss:** You will need some white yarn, a black poster board, and some plastic spiders. Cut out a large spider web shape from the poster board and make some holes in it. Attach the yarn to the back of the web and hang it on a wall or a door. Give each player 3 spiders and have them try to toss them through the holes in the web.

Mummy Wrap: You will need some toilet paper or crepe paper. Divide the players into teams of two and give each team a roll of paper. One player will be the mummy and the other will be the wrapper. The wrapper has to wrap the mummy from head to toe with the paper, leaving only the eyes, nose, and mouth uncovered. The first team to finish wins.



063 551 6909



info@lavenderandtime2.co.za



@lavenderandtime80

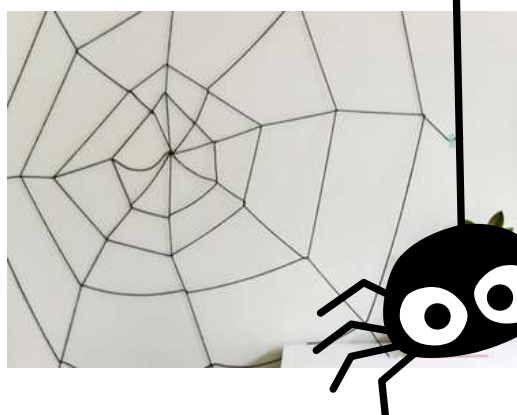


@lavenderandtime



@lavendertime3

GET CREATIVE WITH THIS DIY YARN SPIDER WEB



Supplies:

yarn, scissors & tape (pick a tape that is friendly to your walls)



Instructions:

Step 1: Cut the pieces of wool and tape it to the wall

Start by cutting 3-4 long pieces of wool and place them up on the wall with tape

Step 2: Connect the wool pieces together

Attach all of the wool pieces at their intersection with a small piece of wool and tie off. Trim off the excess.

Step 3: Create the webbing

Next use a large piece of wool to start creating the webbing. Tie the wool to one of the long strands and bring it around to each of the next strands. At each long strand, tie the large piece of wool to the strand (using a simple knot).

Continue going to each strand, looping and tying until you have made your way back up to the first strand that you started with. Cut off the excess wool. Each knot should be a slip knot so it can move up and down on the wool.

Step 4: Make larger rings on the web

Repeat step 3 with large and larger pieces for larger and larger rings on the web. Make the rings as close together or far apart as desired for aesthetic. Once you have finished all the rings your spider web is complete!

Taylor the size and shape specifically for your wall, bookshelf, or window. Make multiples in different colours and sizes- small white ones or large black ones. Even add in some bright-coloured webs just for fun! Add in little faux spiders for a creepier effect!



GET CREATIVE WITH THIS NO SEW AMIGURUMI SPIDER PATTERN



Materials:

(These materials make a 4in L x 5.5in W x 2.5in H spider)

-Yarn: Any size 4 yarn should work for this project. I used Red Heart Super Saver yarn and I Love This Yarn. You will use one color for the body and a pink color for the cheeks if you want to embroider blush on them.

-4mm crochet hook

-2 12mm safety eyes

-Needle for embroidery

-Polyfil

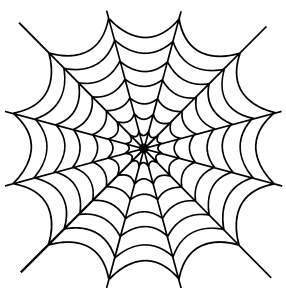
For a large plush Amigurumi spider you need:

(These materials make an 8in L x 12in W x 5 in H spider)

-Blanket yarn

-18mm safety eyes

-6mm crochet hook



BOO!



Abbreviations:

ch - chain
dc - double crochet
hdc - half double crochet
sl st - slip stitch
st - stitch
sc - single crochet
tr - triple crochet
yo - yarn over

Legs (make 8):

Row 1: chain 15

Row 2: sc into the second chain from the hook, inc in each of the 13 remaining st
Fasten off leaving a tail for tying.

Before Starting the body cut 2, 14 inch pieces of yarn to crochet the spiders fangs later.

Body:

Round 1: 6 sc in magic ring [6]

Round 2: (inc) repeat 6 times [12]

Round 3: (sc in the next st, inc) repeat 6 times [18]

Round 4: (sc in the next 2 st, inc) repeat 6 times [24]

Round 5: (sc in the next 3 st, inc) repeat 6 times [30]

Rounds 6-8: sc in all 30 st [30]

Round 9: (sc in the next 3 st, dec) repeat 6 times [24]

Round 10: (sc in the next 2 st, dec) repeat 6 times [18]

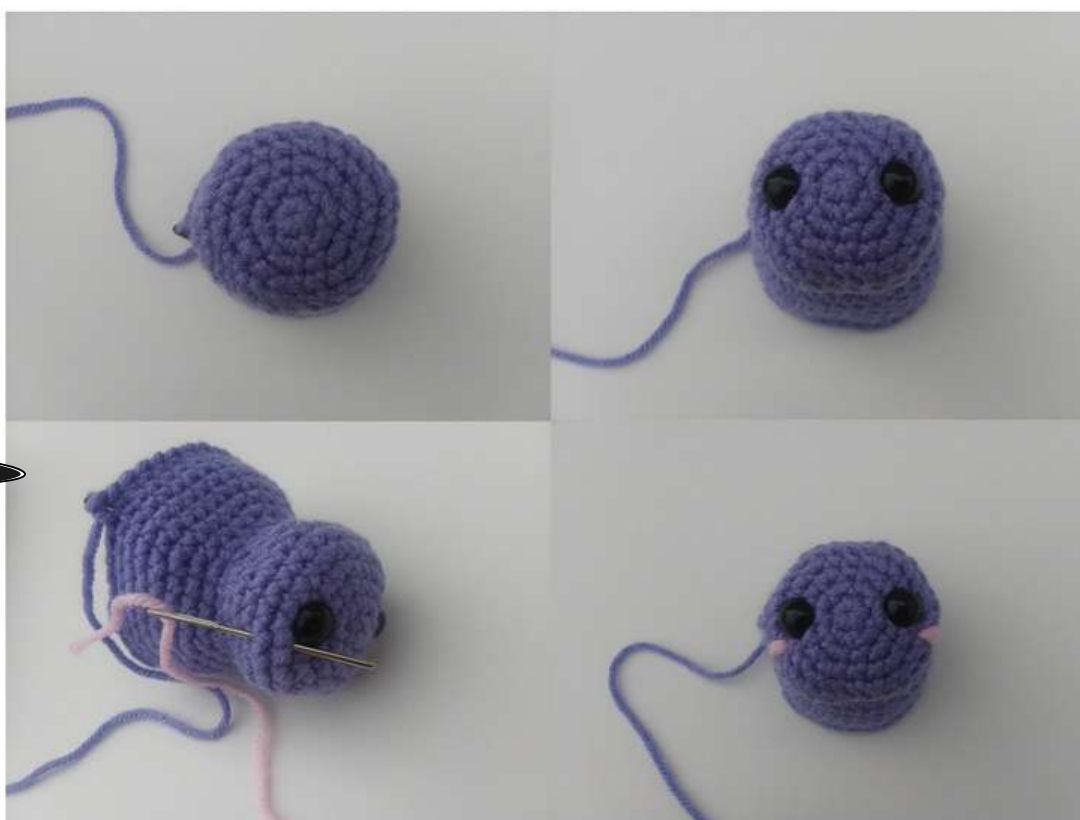
Round 11: (sc in the next 2 st, inc) repeat 6 times [24]

Round 12: (sc in the next 3 st, inc) repeat 6 times [30]

Round 13: (sc in the next 4 st, inc) repeat 6 times [36]

Rounds 14-18: sc in all 36 st [36]

Now you can add your safety eyes and embroider the cheeks

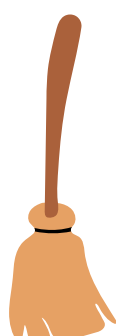




For the fangs you will want to use a stitch marker to see if where you plan to stitch will be centered when it's done. When your ready, starting from the top of the head going down, slip stitch into the spot you marked then single crochet in the same spot 3 times. Fasten off. Pull the remaining yarn through the top hole to the bottom. Use your crochet hook to pull the remaining strands of yarn inside the spider.



For the legs use stitch markers to mark where the legs will go (I use bobby pins which helps me get a good idea where they go since they're long. In these pictures I only did one side but, normally I do both to make sure they are even). I space the legs out every 2 rows like in the pictures below. When the leg spots are marked pull the yarns ends through the holes and tie them. When the legs are tied on add in some polyfil to stuff the body partially. You can add more later before you close up the spider.



Round 19: (sc in the next 4 st, dec) repeat 6 times [30]
Round 20: (sc in the next 3 st, dec) repeat 6 times [24]
Round 21: (sc in the next 2 st, dec) repeat 6 times [18]
Round 22: (sc in the next st, dec) repeat 6 times [12]
Fasten off leaving a tail to close the hole.
Your spider is done!

SPOOKY



CLASS CALENDAR OCTOBER 2023

Monday Tuesday Wednesday Thursday Friday Saturday Sunday

						1 Sunday
2	3 09:30 - 12:30 Smocking and Embroidery with Diane	4	5 09:30 - 13:30 Teddy Bear Class Bookings essential	6	7 9:00 - 10:30 Children's Sewing Classes	8 Sunday
9	10	11	12 09:30 - 12:30 Beginners Crochet with Sharon 09:30 - 13:30 Teddy Bear Class Bookings essential	13	14 9:00 - 10:30 Children's Sewing Classes 09:30 - 13:30 Teddy Bear Class Bookings essential	15 Sunday
16	17 09:30 - 12:30 Smocking and Embroidery with Diane	18	19 09:30 - 12:30 Beginners Quilting with Sharon	20	21 9:00 - 10:30 Children's Sewing Classes 09:30 - 13:30 Teddy Bear Class Bookings essential	22 Sunday
23 /30	24 /31 09:30 - 12:30 Smocking and Embroidery with Diane	25	26	27	28 9:00 - 10:30 Children's Sewing Classes	29 Sunday



063 551 6909



info@lavenderandtime2.co.za



@lavenderandtime80

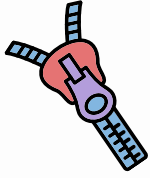


@lavenderandtime

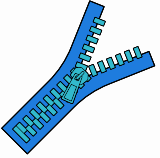


@lavendertime3

DID YOU KNOW?



Zippers are the teeth of clothes, biting and holding them together.



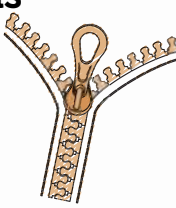
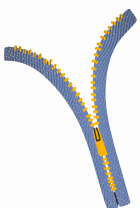
The zipper is a simple but brilliant invention that has revolutionized our lives in many ways. It is the result of the efforts of several inventors, who faced many challenges and setbacks before making the zipper a household item. The zipper owes its success not only to its ingenious design, but also to the influence of the media and the fashion industry.

Here is the story of how the zipper came to be.

The first person to conceive the idea of a zipper was Elias Howe, Jr. (1819–1867), the inventor of the sewing machine. In 1851, he patented an “Automatic, Continuous Clothing Closure” that used metal clasps to fasten garments. However, he did not pursue this invention further, perhaps because he was too busy with his sewing machine business. He missed his chance to be known as the “Father of the Zip.”

The next person to take up the challenge was Whitcomb Judson (1846–1909), a Chicago inventor who patented a “Clasp Locker” in 1893. His device was similar to Howe’s, but used hooks and eyes instead of clasps. He teamed up with Colonel Lewis Walker, a businessman, to form the Universal Fastener Company and produce his invention. They introduced the clasp locker at the 1893 Chicago World’s Fair, but it failed to impress the public. Judson is often credited as the “inventor of the zipper,” but he never used that word.

The real hero of the zipper story is Gideon Sundback (1880–1954), a Swedish-born electrical engineer who worked for the Universal Fastener Company. He married Elvira Aronson, the daughter of the plant manager, and became the head designer of the company. He improved Judson’s device by increasing the number of teeth per inch from four to 10 or 11, and making them interlock with a slider. He also invented a machine that could produce a continuous zipper chain from a special Y-shaped wire. He patented his “Separable Fastener” in 1917, and it was the first modern zipper.



DID YOU KNOW?

The name “zipper” was coined by the B. F. Goodrich Company, which used Sundback’s fastener on their new rubber boots or galoshes. They liked the sound of the word “zip” when they opened and closed the boots. The zipper was mainly used for boots and tobacco pouches in its early years, until it caught the attention of the fashion industry.

In the 1930s, a marketing campaign promoted zippers as a way to teach children self-reliance, as they could dress themselves with ease. The zipper also became popular in men’s trousers, after it won the “Battle of the Fly” against buttons in 1937. French fashion designers praised zippers for their convenience and style, and Esquire magazine called them the “Newest Tailoring Idea for Men.” Zippers also prevented any embarrassing accidents that buttons could cause.

The zipper reached new heights when it became possible to make them open on both ends, such as on jackets. Today, zippers are everywhere and are used for clothing, luggage, leather goods and many other objects. Thousands of miles of zippers are made every day to meet our needs.

The zipper is a remarkable invention that has changed our lives for the better.



Elias Howe



Whitcomb Judson



Gideon Sundback



JUST FOR FUN SEPTEMBER SOLUTION

Answers to September's Word Search

Solution

Z Y S J P K I G W P O W Q M M V D R F T O U F B U
D J T N N Z C C V L L X B D D Y F R B P U C J I Z
R F I L V A B S B N F V F L D U W L W Y S D E F H
E Q T X D Y I Z O E Y Q O E J R J J P B K G C P S
S Y C H T S O I B E D Q E O M I G L N O L I R K Y
N N H X F V R S B D U O Z N D G Y R X B B M B X K
L X S J J G G O I L V H H C A O E M P B D X S J S
N C E C D D E R N E I C F I U O O V U I Z Q U J F
E V L Q H T M S P O O L S P I N G D D N O Y G D V
X O E R Y E R Y H D J G D C H Q B M U C H S S Z O
X O C B Z D V K M L C G Y D S Z U N S A S M K S B
O J T O T M T H R E A D G U I D E S K S F Z M R Y
Q H O F Y F E H H Q C L O V I G W T G E A F Z H Q
G F R F J U T W P N P F O O T C O N T R O L L E R
A V V R W J N S X G T R Y F K I X C P S F H F Q Q
L T S C E I L Z H K W B L I X V D C J O Q C B B T
S M Q C L O V T R V X M T Z K Q D K M H Y S Y C W
Z Q A L S C R E N D T Q B O B B I N W I N D E R L
C N E E D L E C L A P N G W C A K U Y Z H F K A S
H A N D W H E E L E D K C C V G C L X T B O W F G
W W G G F E W W A Y W K N I K L M F A E A O G U O
P A T I N Y E R N C K U D Z T F E K A E E T U F T
C N X G K Q G S K P R N J R K J A V G J P I S Q W
H R R C I M D Z M V O T V L O X T I H N Q U S F R
A J N E P Z T H E J C B O W S R B U F A C C J T V

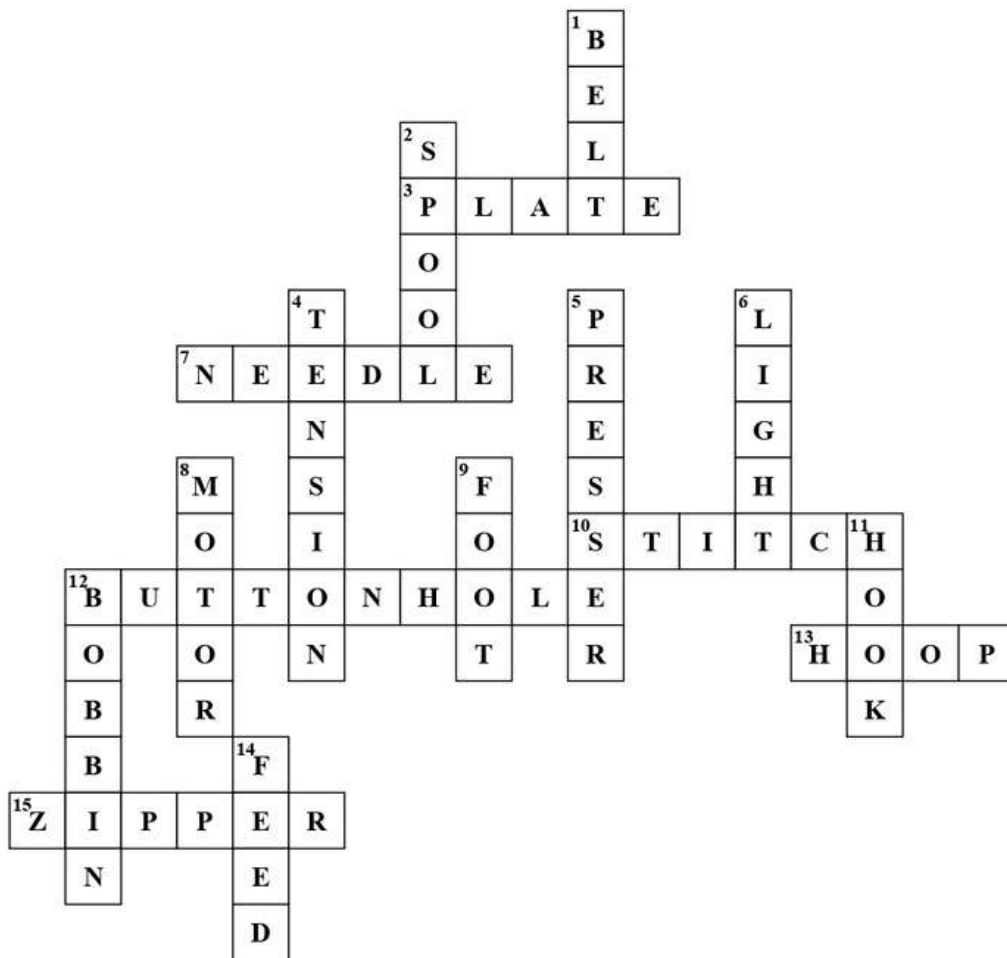
BOBBINWINDER	SPOOLSPIN	FOOT	BOBBINCASE
FOOTCONTROLLE R	STITCHSELECTOR	NEEDLECLAP	NEEDLE
THREADGUIDES	HANDWHEEL	BOBBIN	



JUST FOR FUN SEPTEMBER SOLUTION

Answers to September's Cross Word

Solution



Across

- [3] A flat metal surface that supports the fabric under the needle
[7] A sharp metal tool that pierces the fabric
[10] A loop or knot of thread that forms the seam
[12] A slit in the fabric that allows a button to pass through
[13] A round frame that holds the fabric taut for embroidery
[15] A fastener that consists of two rows of metal or plastic teeth

Down

- [1] A flexible band that connects the motor and the handwheel
[2] A large cylinder that holds the upper thread
[4] A device that controls the tightness of the thread
[5] A lever that raises and lowers the foot
[6] A lamp that illuminates the sewing area
[8] A device that powers the sewing machine
[9] A device that holds the fabric in place while sewing
[11] A part that catches the upper thread and loops it around the bobbin
[14] A mechanism that moves the fabric along while sewing

Copyright © 2023 printablecreative.com | For personal use only.



JUST FOR FUN OCTOBER

It's word search time again...

Items Sold at Lavender & Time

Q M P S U O K V N L D G F E O E M F M V U I M D W
T G P G P K C C E J K N A K E H O H E S F K J O U
D Q L D G Y Y S F L D J B S I V A U S I L L Y G V
N D Q L C T N H G A O I R T B N C R J L I M G J A
A F U C W X O Z P E E W I P N E E D L E S U G S F
N R I Z O N G U W W Q U C T X I W O U U J A K D B
N J C O T T O N S X A B S O B V Y D Q M I Y P X D
F M T H R E A D S P X I M X K P R X E A C T G M Q
U Q R N T W Q H W N X U P U Y J E K W N T I Z Y O
Q O Y R H D B R M S C Y O S M L O F I P N M F F Q
M M L T P Y Z E D B Y K F O H K L A K C P X Q N R
A Q W V P V K W Q A O P V P Q V I S G G D M X C T
R B W S A R A X Y M I Q A F K D Y E F G W D D U N
K U O Z L Z C R Z Y G X K Q C X I W P T G O V T I
E L O B Z Z D U S C S T Q H S E C I I O N P I T B
R O L I C W Z Y C B U T T O N S D N S P I K L E B
S E D A W C M E H C X U Q J P R A G P J E B M R J
R R N S B S G X A Q U R U I C W E M E M C G Q S H
N T M B A C U H L O P D C B Z M R A X W X J U Y T
Y F U I S I L V K K R R M K F O C C P E N U R W G
V K U N M S V X U R U B N Z I P S H Q O O Z V N A
B W J D L S A G K L L Z Z S M I X I K W B L C L Z
M M T I B O I A S D E W Q B A H J N X P X O F J O
X P O N W R B H O R R J I N M T D E P I N S E P S
Q B G G E S Q C J I S T B E N B Q S M T Q P Z C H

BUTTONS

BIASBINDING

SCISSORS

THREADS

FABRICS

NEEDLES

CHALK

CUTTERS

WOOL

COTTONS

MARKERS

ZIPS

PINS

SEWINGMACHINES

RULERS



063 551 6909



info@lavenderandtime2.co.za



@lavenderandtime80



@lavenderandtime

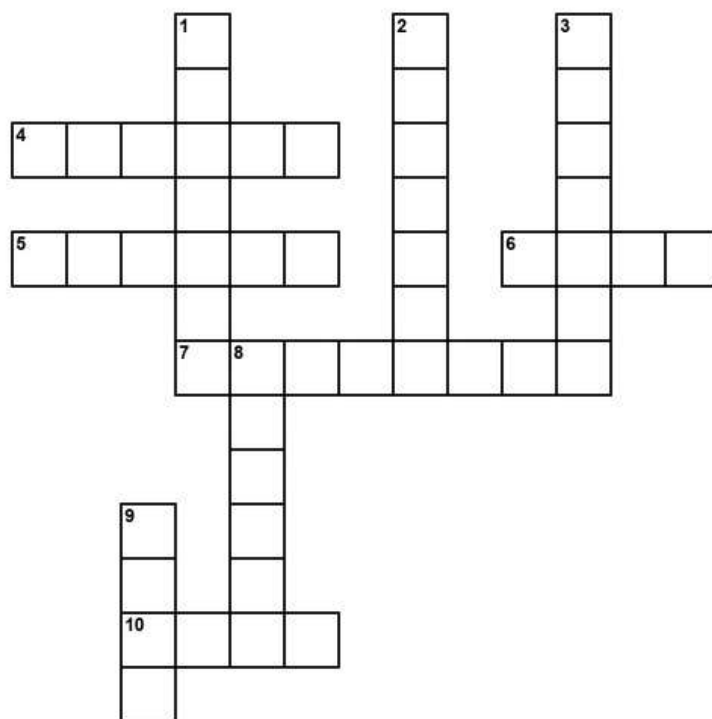


@lavendertime3

JUST FOR FUN OCTOBER

Try our October cross word...

Sewing Accessories



Across

- [4] material made from fibres that are woven,
- [5] Tools that have straight edges and markings.
- [6] It is a type of fabric that is warm and soft,
- [7] They have two blades that pivot around a point,
- [10] They are similar to needles, but shorter and without eyes.

Down

- [1] Tools that have tips with ink or dye.
- [2] They have sharp points and eyes,
- [3] They are small objects that have holes or loops.
- [8] Fluffy fibres that grow around seeds.
- [9] They have two rows of teeth that interlock when pulled by a slider.



063 551 6909



info@lavenderandtime2.co.za



@lavenderandtime80



@lavenderandtime



@lavendertime3

SUPPORTING OUR COMMUNITY

Lavender & Time making a positive difference - it's not that we have to, it's that **WE WANT TO!**

80 7th Avenue, Edenvale 063 551 6909



Lavender and Time is a place where you can find kindness and generosity, as we often donate our products to various causes and events.

One example of our charitable deeds is our donation of knitting packs to Bedford Primary for their fun day that they held on 2nd September.

The knitting packs consisted of knitting needles, wool, and a pattern that the children could use to make their own knitted items. The donation was a great way to introduce the children to the craft of knitting, as well as to provide them with a fun and creative activity. this donation was just a small gesture showing love and support to the community. Lavender and Time is not only a haberdashery that sells crafts, but also a haberdashery that spreads joy and happiness through crafts.

Visit our store and see for yourself why Lavender and Time is a haberdashery with a heart.



PFAFF
Perfection starts here.™

lancaster1@pfaffsa.co.za

011 450 3914

KEEP IN CONTACT



Don't forget to keep in contact.
Like us, follow us and share on our social
media platforms.



www.lavenderandtime.co.za



info@lavenderandtime2.co.za



lavenderandtime3



063 551 6909



lavenderandtime80



80 7th Avenue Edenvale



TILL NEXT TIME



**Thanks for choosing
Lavender and Time,
where creativity blooms
and stitches last.**

**Happy crafting,
The Lavender and Time
Team**



80 7th Ave Edenvale | 063 551 6909 | www.lavenderandtime.co.za