



Network performance  
monitoring and security



[www.syclope.com](http://www.syclope.com)



Syclope is a network monitoring tool using real-time flow analysis, enriched with business context to help businesses assess performance and protect IT infrastructure. It records, processes, and analyses all parameters contained in flows, enhanced by SNMP, geolocation and security feeds.

With Syclope you can diagnose network issues, including network connection settings and bottlenecks. The security feature of Syclope is designed based on the MITRE ATT&CK methodology.

Rules and security incident detection mechanisms make it possible to detect attacks and undesirable activities on the network.



Application details: Critical metrics presentation for performance module.

## One common solution to cover multiple IT infrastructure areas



### Visibility

The Visibility module provides full insight into the operation of the IT network, thanks to which IT managers and network admins can quickly make decisions about resource allocation and actions to protect against unplanned downtime related to IT infrastructure failures.



### Performance

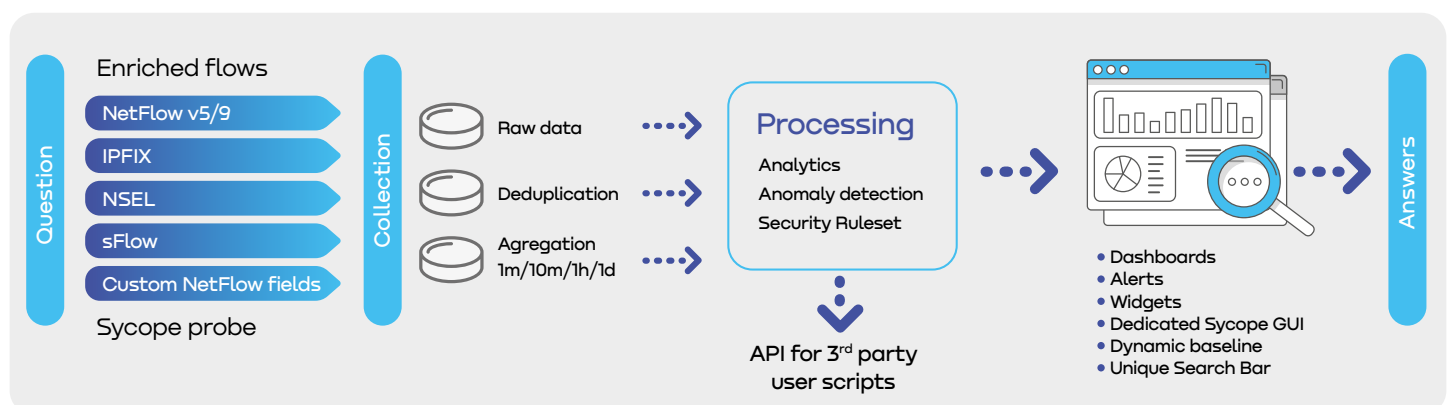
The Performance module is focused on L4-L7 monitoring, from TCP analytics to L7 app detection and application response times measurements. The module allows for quick triage of potential issues.



### Security

The Security feature allows users to detect and analyse security anomalies and threats in the context of the entire organisation. It provides support in processes such as Network Forensics, incidents and threats detection. All of this is based on the MITRE ATT@CK framework to allow security teams to easily understand detected events.

## We give you answers not data





”

“A system which is ready to work in one day - that’s not standard fare. We were pleasantly surprised at the ease of installation and integration of Syclope with our other systems”

Artur Wójcik

The biggest Oncology Center in Central-Eastern Europe

## What we do differently



### Data minig and analytics

Dedicated, purpose-built database that is specifically designed to support the efficient storage, analysis, and retrieval of large amounts of network traffic data. This database is optimized for data mining and analytics, allowing users to easily extract insights and trends from the data collected by the system.



### Powerful GUI

Syclope’s GUI enhances user experience by providing easy access to data. Find information easily thanks to unique searchbar, informative visualization and customisable dashboards.



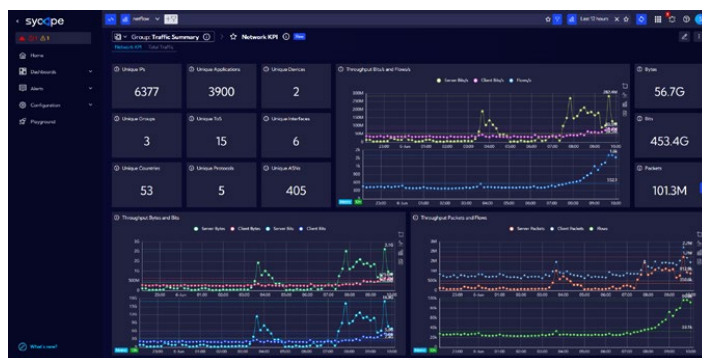
### Contextual search bar simple and advanced

Quickly filter any data, from any source, by any field, using any value and for any dashboard.



### Data deduplication

Syclope remove duplicated flows from multiple sources, allowing for more accurate presentation of traffic volume and display of traffic paths based on NetFlow data. This can help organizations better understand their network usage and performance and make informed decisions about optimizing their network from multiple routers.



Traffic summary in relation to key network perspectives.



### Extensive drill-down capabilities

The drill-down mechanisms enable you to:

- view data for a specific port, interface or IP address,
- drill-down widget, filtering widget.

Whether you’re using the search bar, the stats flyout, or directly interacting with a widget or dashboard.



### Threat detection, analysis & mitigation

The security module features over 60 rules covering MITRE tactics and including network threat hunting searchers. Syclope consistently analyses the data to detect threats in your network and help you resolve security issues.



### Scenario based problem solving

The modules features pre-configured analytical scenarios to simplify the analysis and conclusion-making process for critical security issues.



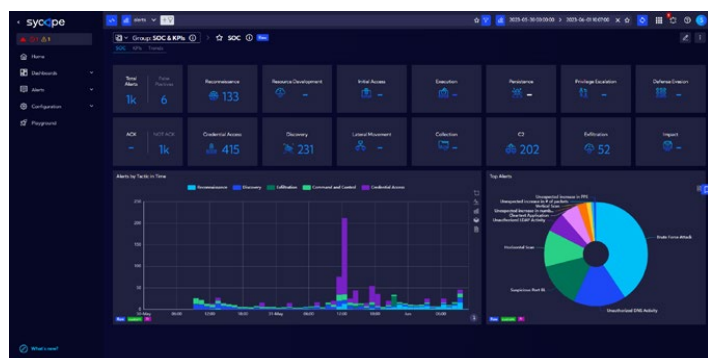
### SOC & HPIS dedicated scenarios

See the big picture! All important information on a single screen to help identify the issues faster and easier.



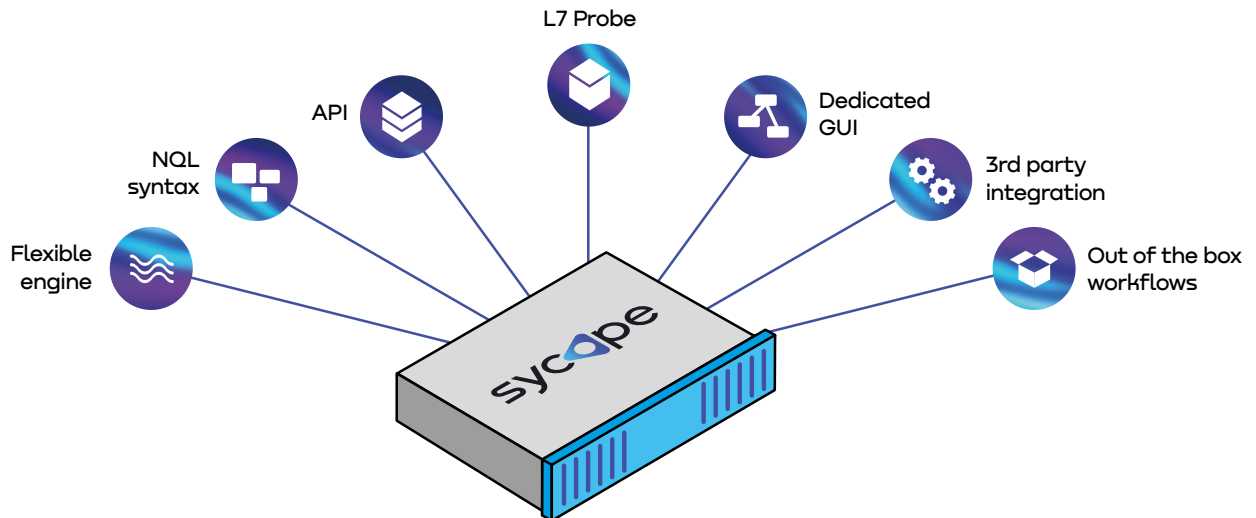
### Out of the box DNS and HTTP performance metrics

Thanks to this functionality, user is able to detect trends and errors in the performance.



SOC & HPIS dashboards facilitate the process of monitoring trends of security risks daily.

# Solution overview



## Flexible engine

High performance data collection, multiple flow protocol support, embedded deduplication 2.0, customised dashboards and visualization.



## Discovery mode

Ability to detect and interpret new and unknown fields in the NetFlow/IPFIX/sFlow stream. System remains effective and accurate, even as the data streams it processes evolve and change over time.



## User scripts

Enable seamless and flexible integration with external systems or services, can be used to integrate the Syclope alerting module with these systems, allowing for data exchange, enrichment, or triggering of actions in external applications.



## L7 Probe

No application will remain hidden anymore. L7 app detection and application response times measurements.



## Out-of-the-box workflows

Selection of ready to use workflows for multiple use cases, dedicated for NOC/SOC teams, network/security forensic and business reporting.



## Dedicated GUI

Making your work simple. Unique searchbar with search history, hinting and query builder, informative visualizations, dynamic baseline, possibility to share the views with other users.



Syclope is focused on designing and developing highly specialised IT solutions for monitoring and improving network performance. Our solutions were created and developed by engineers, who have been working on the issues of network performance, application efficiency and IT security, using the solutions from global APM/ NPM and SIEM providers, they have completed more than 400 projects.

[www.syclope.com](http://www.syclope.com)  
[contact@syclope.com](mailto:contact@syclope.com)

Warsaw, Poland  
Goraszevska 19  
02-910 Warsaw

Prague, Czechia  
Freyova 12/1  
190 00 Praha

Bucharest, Romania  
66, Petru Maior Str.  
011 264 Bucharest