

NEW PLASTERBOARD BOX

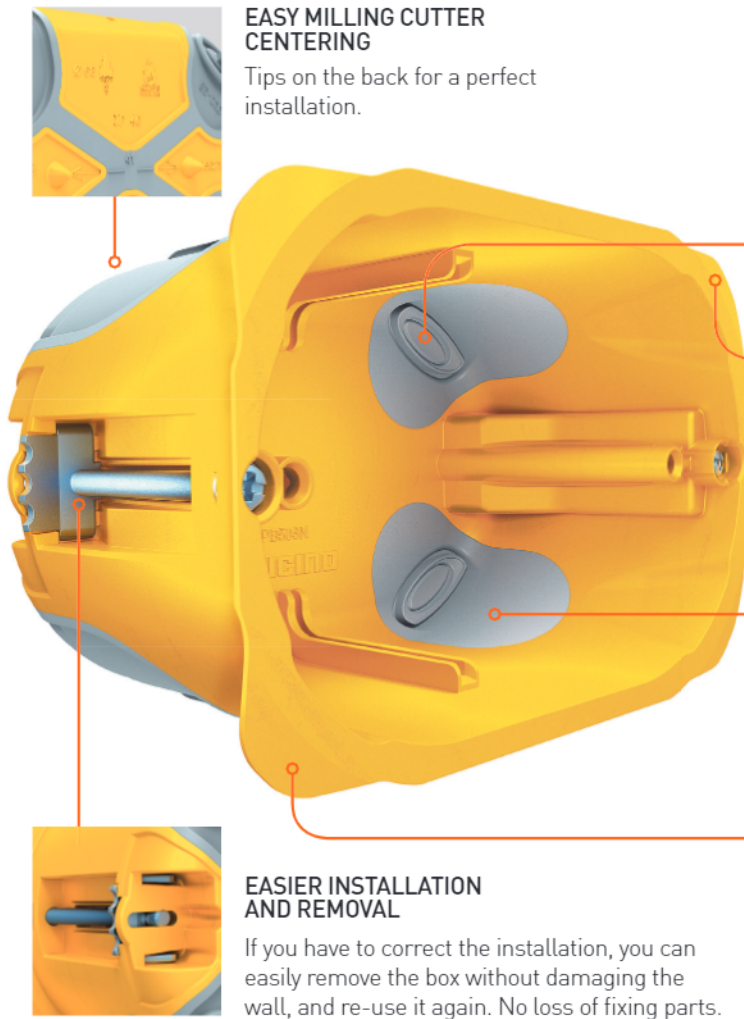


Don't waste energy!

SAVE YOUR ENERGY ...

Easy, fast, professional

The new generation of boxes for dry partitions: each innovative detail is designed to make your work quicker and simpler, guaranteeing an even more professional result.



EASY MILLING CUTTER CENTERING
Tips on the back for a perfect installation.

INNOVATIVE TOOLLESS OPENING
Pull the seal manually to create the hole where the conduits can be inserted.

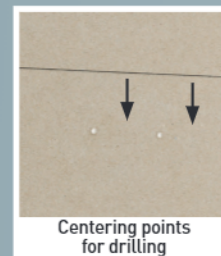
TRIPLE GRIP
Reinforced wide flange, metal clamps and rubber strips ensure boxes are held in place securely.

FLEXIBLE BUT FIRMLY FIXED
Airtight elastic membranes which assure each installed conduit is safely fixed in its place, and yet flexible enough to adjust to the wanted position.

HIDES IMPERFECTIONS
Thin but wide collar to hide small mistakes in the hole-making.

EASIER INSTALLATION AND REMOVAL
If you have to correct the installation, you can easily remove the box without damaging the wall, and re-use it again. No loss of fixing parts.

INSTALLATION GUIDE



PERFORMANCE FEATURES



Flame-proof

Resistant up to 850 °C (tested on the basis of standard EN60670-1): this means that the new box has passed the glow wire test, where a metal pole is heated up to 850 °C and put in the box for 30 seconds.

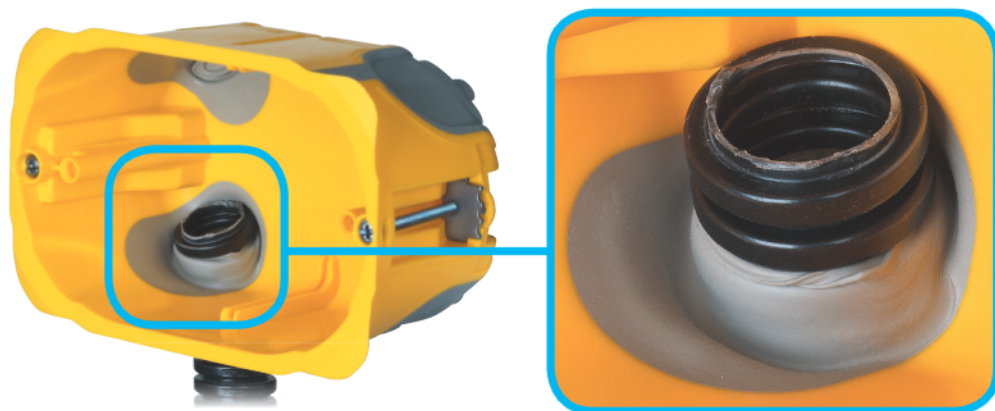


Sturdy

The box is made of propylene: it is rigid, reliable and does not crack. The tests have shown that it will maintain its shape and function from -5 °C to 60 °C.

... THE HOUSE'S ONE

Airtight: - 95% air leakage



New box is designed to meet the highest demands for energy saving: the elastic membranes fit tightly around the conduits or cables, allow a relevant saving (up to 15 kWhEP/m²/year), **increasing the building's level of thermal insulation.**

OLD BOX
100 m³/h



NEW BOX
4 m³/h



Refinish the hole



Pull the seal to open the membrane



Insert the conduits



Insert the box in the hole



Fix the box



Dust-proof

The elastic membranes prevent the entry of dust into the box even with the conduits inserted, conferring the product the IP40 degree of protection.

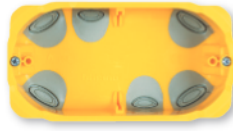
COMPLETE RANGE FOR ALL NEEDS



PB502N



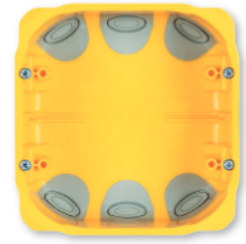
PB503N



PB504N



PB506N



PB526N

| Item | BOXES FOR PLASTERBOARD WALLS OR DRY PARTITIONS | |
|--------|---|-----------------------------|
| | Boxes for single and double board walls for wiring devices installation | |
| | | Conduits entries |
| PB502N | 2 modules - Ø 71x50.5 mm | 2 x 16-20 mm - 2 x 20-25 mm |
| PB503N | 3 modules - 110x71x52 mm | 4 x 20-25 mm |
| PB504N | 4 modules - 132.5x71x52 mm | 2 x 16-20 mm - 4 x 20-25 mm |
| PB506N | 6 modules (7 modules for Livinglight) - 183x71x52 mm | 6 x 20-25 mm |
| PB526N | 3+3 modules - 111x116x52 mm | 6 x 20-25 mm |
| PB503V | internal separator for boxes item PB503N - 4N - 6N | |
| PB526V | internal separator for box item PB526N | |

Items in compliance with the EN 60670-1 standard

DRILLING THE PLASTERBOARD

to drill the plasterboard board use a common hollow cutter, diameter 67/68 mm.

