

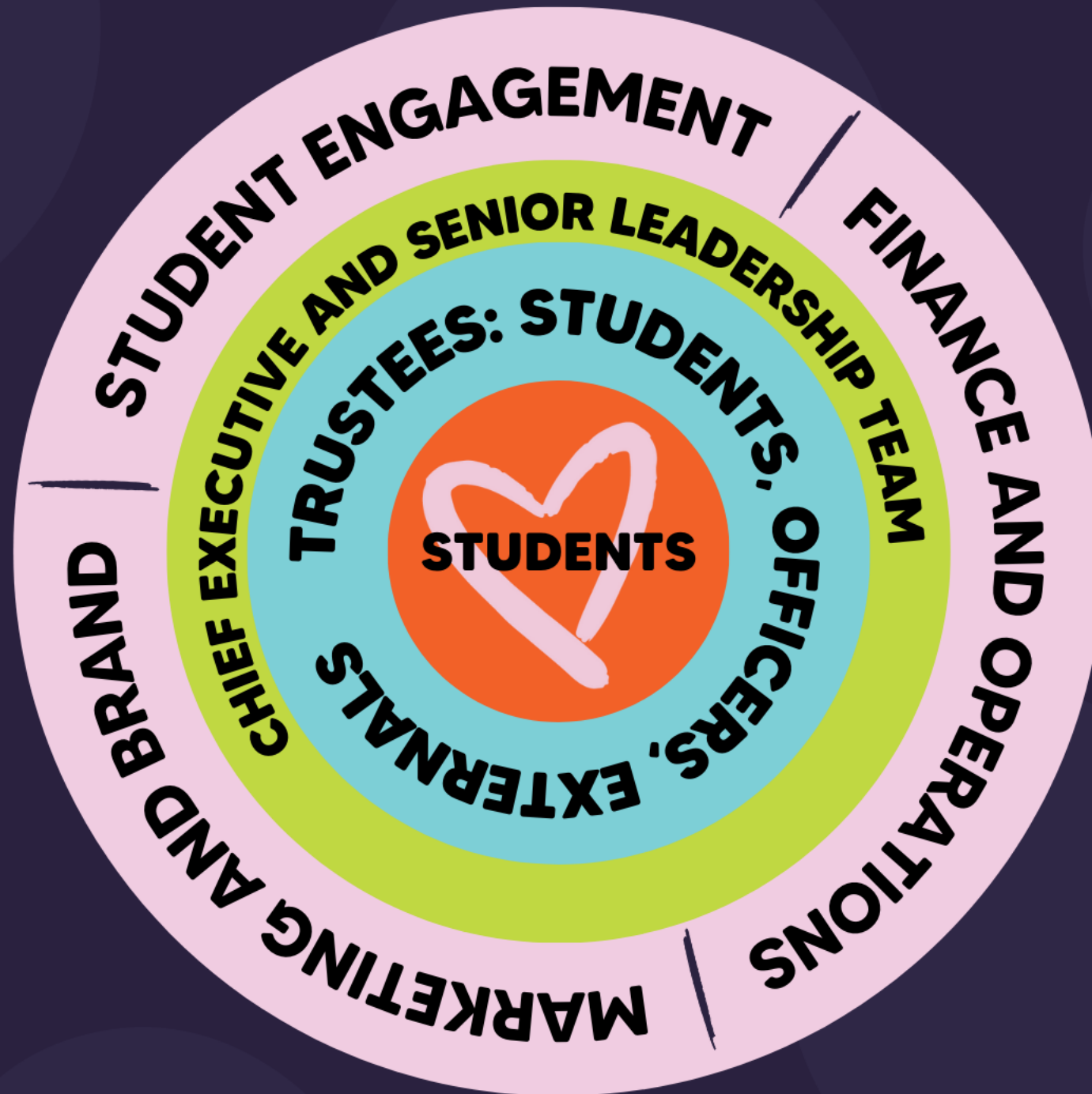
Welcome to Exeter Students' Guild

Student Members' Meeting

4 December 2023



How
we're
run



OUR YEAR IN NUMBERS

WE SUPPORTED

2692

INDIVIDUAL STUDENT CASES
ON A NUMBER OF ISSUES INCLUDING
ACADEMIC, HOUSING AND FINANCE

2,062

GIVE IT A GO



PARTICIPANTS

SUBJECT REPS
MAKING CHANGE ON YOUR COURSES



489

2,524

SOCIETY
COMMITTEE MEMBERS

14,673

HOURS
OF STUDENTS
PRACTICING MUSIC IN
CORNWALL HOUSE AND KAY HOUSE

11,000+
PIECES OF STUDENT FEEDBACK

323

SOCIETIES

11,203

SOCIETY
MEMBERS



£61,530!!
PAID TO STUDENT STAFF.

83

STUDENTS ATTENDED
19 ADVISORY BOARD MEETINGS
(INCLUDING MARKETING AND EDI)
TO CO-CREATE AND HOLD US ACCOUNTABLE



MEMBERS
OF OUR GUILD COMMUNITY

27,191



OUR WINS FROM 2022-2023



Some wins from our priority work:

- Allocated £10,000 worth of music lessons through our Music Tuition Scheme
- Partnered with the University of Exeter to provide free period products on campus
- Organised regular Community Café events to give you the opportunity to meet other students with similar interests and backgrounds

Democracy and Student-led campaign

- We have successfully launched our advisory boards (Student advisory board, EDI advisory board, Marketing advisory board)
- We supported student activism and initiatives like the £2 meal deal campaign - example of the £2 meal deal campaign
- We have facilitated 159 speaker events throughout the year in line with freedom of speech



How do we know what students think

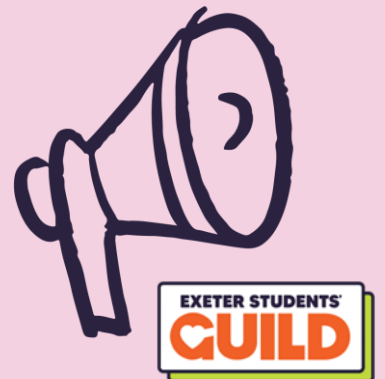


Student Leaders and Student Voice

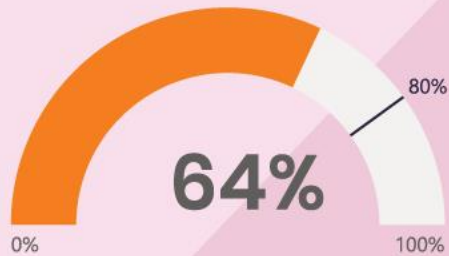
- 4 Full-Time Officers
- 4 Student Trustees (selected to include International, Postgrad and St Luke's representation)
- Department Officers, 489 Academic Reps and PGR Reps
- 2000 Society committee members and 11,000 Society members
- Student Advisory Boards - Guild, Marketing, and EDI

Powered by Research and Insights (over 11,000 pieces of feedback)

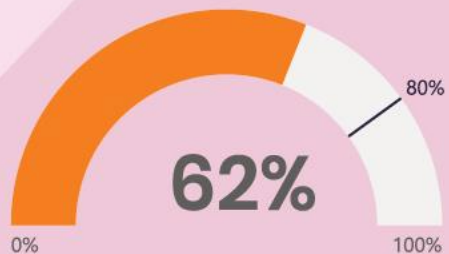
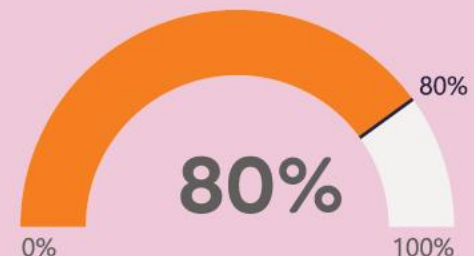
- 150 Survey Superheroes (social impact KPIs)
- C.3000 Student Priorities
- Ad-hoc research projects



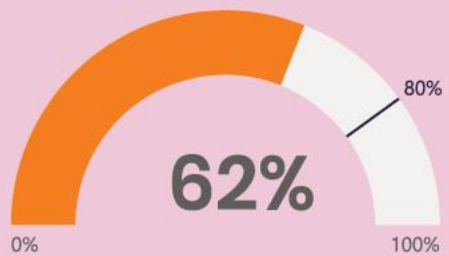
HOW WE'RE DOING



I feel the Guild's brand and communications are relevant and shaped by students



The Guild's digital platforms are relevant, engaging and accessible



The Guild's spaces are flexible and reflect my needs



From this we identified FOUR key themes
that summarised what you told us to prioritise,
they were...

COST OF LIVING

WELLBEING & SUPPORT

BELONGING & INCLUSIVITY

CAMPAIGNING & ENGAGEMENT

Exeter Students' Guild Financials 2022-2023



SUMMARY OF THE YEAR:

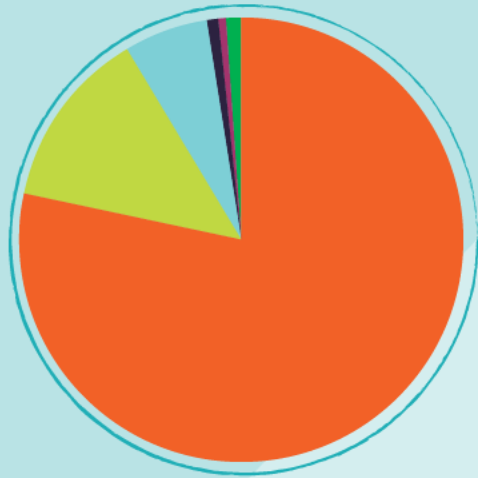
**The primary role of the Guild
is the advancement of education of students
at the University of Exeter for the public benefit.**

This is achieved through:

- ➔ promoting the interests and welfare of students at the University of Exeter during their course of study and representing, supporting and advising students.
- ➔ being the recognised representative channel between students and the University of Exeter and other relevant external bodies; and
- ➔ providing social, cultural, sporting and recreational activities and forums for discussions and debate for the personal development of its students.



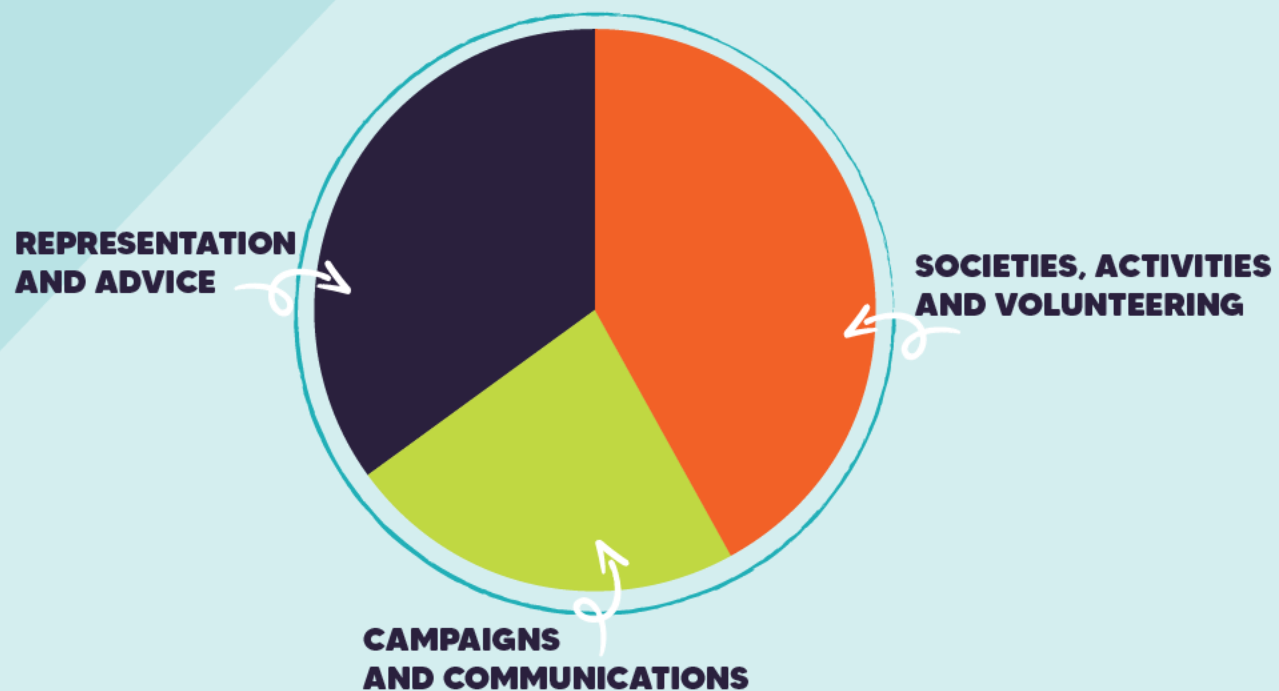
GUILD INCOME



Guild Income	Total
University Block Grant	2,705,261
University Donation of serviced accommodation	462,382
Grants and donations	194,196
Charitable activities - Licensed trade and entertainments	42,448
Other trading activities - Commercial marketing and sponsorship	9,731
Investments - Interest earned	35,608
Total income	3,449,626



GUILD EXPENDITURE



Guild Expenditure	Total
Raising funds	1,403
Charitable activities - Representation and advice	1,235,714
Charitable activities - Societies, activities and volunteering	1,463,520
Charitable activities - Campaigns and communications	785,572
Total expenditure	3,486,209



SOCIETY INCOME / EXPENDITURE

The Guild acts as a 'banker' for societies so society income and expenditure do not form part of the Guild's Financial Statements.
It's their money, to be spent by them, on their members.
In order to ensure members get the benefit of their membership, we are supporting societies to clear down their balances in year and utilise funds.

WHAT WE HAD FROM THE YEAR BEFORE (2021/22)

Balance brought forward 619,159

THIS IS THE INCOME/EXPENDITURE FROM THE YEAR 2022/23

Society income	1,180,860
Society expenditure	1,257,121

THIS IS HOW MUCH WAS LEFT AT THE END OF THE YEAR

Closing balance	542,898
-----------------	---------

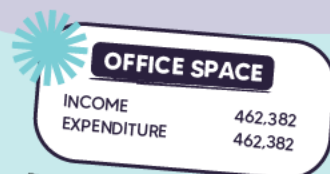
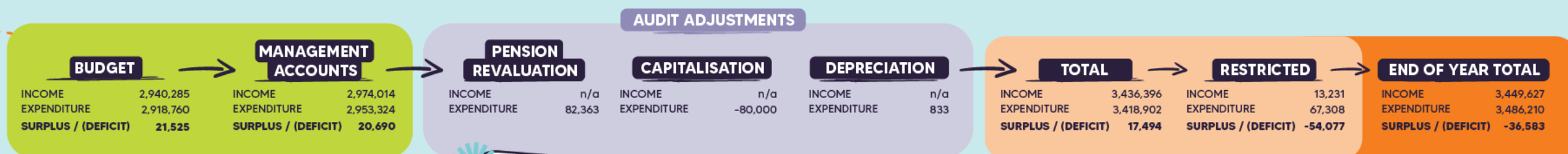


FINAL ACCOUNTS



The table shows how the **Annual Budget for 2022/2023** compares to the **Management Accounts**.

After the **Audit**, further adjustments are made to account for the **donation of office space**, the **revaluation of the pension liability** and a **reclassification of expenses to capital expenditure**.



The Guild doesn't pay rent for our spaces
(University owned)

After accounting for **Restricted Funds**
the total deficit for 22/23 is **£36,583**.

Reserves	Total
Funds - Brought forward	1,364,027
Current year surplus / (deficit)	-36,583
Unrestricted funds - Pension liability	-5,148,078
Total funds	-3,820,634



AFFILIATIONS FOR APPROVAL



NUS UK membership contribution - £30,000
NUS Charity membership contribution - £7,500



NUS UK is an organisation that represents students on a national level with the aim of improving the lives of students and delivering tangible impact for the student movement.



NUS Charity is separate from NUS UK - it's primary aim is to support the development of students' unions like us.

Q&A for Guild Trustees



Thank you!

