



SPEEDATA[®]

思必拓

Stock Code: 832442

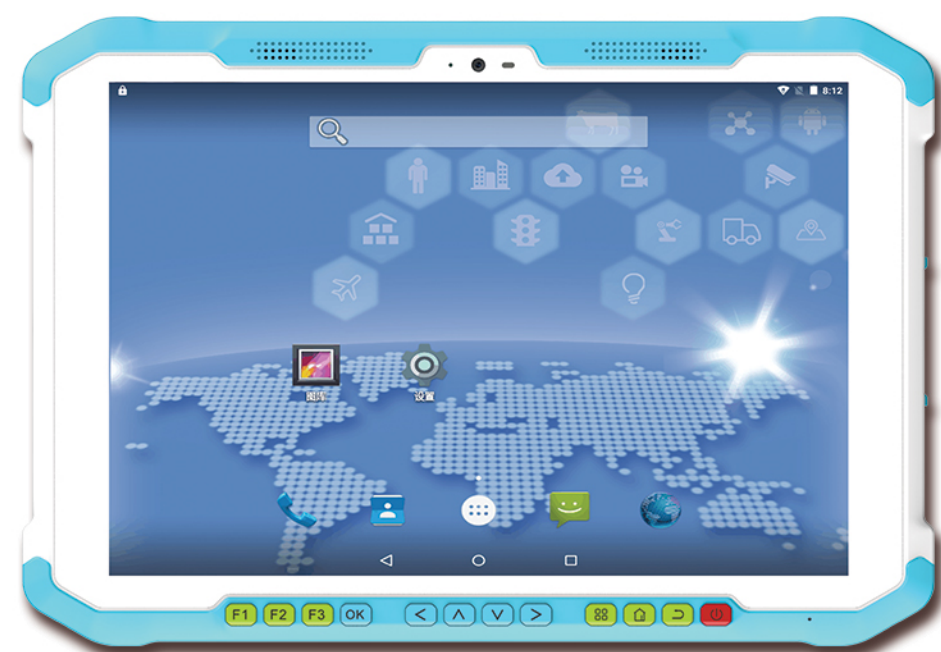


Intelligent Mobile Terminal - SD Series Product Manual

AI Empowers Internet of Things

SD100 Industrial Tablet PC

Super large and ultra clear Display Robust and reliable performance



- ◆ 10 inch WUXGA 1200*1920 HD resolution super large screen, it brings ultimate visual experience
- ◆ Android 7.1 operating system with octa-core 1.8/2.2GHz, Qualcomm Snapdragon 625 processor
- ◆ Ultra-slim design with IP65 protection, Bid farewell to the heavy shape of traditional terminal equipment
- ◆ 9000 mAh large capacity removable battery, guarantee long battery endurance and convenient maintenance
- ◆ Unique magnetic support wristband design for easy use
- ◆ Various peripheral interfaces for optional upgrade applications
- ◆ Multiple physical keys for easy switch to different applications



Parameters

| Model | SD100 |
|---------------------------------------|--|
| CPU | octa-core 1.8/2.2GHz, Qualcomm Snapdragon 625 processor |
| OS | Android 7.1 |
| RAM | 2GB |
| ROM | 16GB |
| Camera | Rear camera 13MP AF with LED flash, Front Camera 5MP FF |
| Display size/type | 10 inch, IPS highlight screen |
| Resolution | 1200*1920 WUXGA |
| Touch Screen | 5-point capacitive touch screen |
| Size | 254*176*17.4 |
| Weight(with battery) | 800g |
| Battery capacity | Typical working hours not less than 10 hours |
| Charging | 8.QC2.0 fast charging, support docking charger |
| Bluetooth | BT4.1 BLE |
| WLAN | IEEE 802.11 a/b/g/n 2.4G 5G dual frequency |
| WWLAN | FDD-LTE B1/B3/B5/B8 TDD-LTE B38/B39/B40/B41 TDSCDMA B34/B39 WCDMA B1/B5 GSM B3/B5/B8 CDMA1x/CDMA2000 BC0 |
| GPS positioning module | GPS+BD+GLONASS |
| Audio | Front dual stereo speakers, Volume 90db±3db(test distance 10cm) |
| Expansion | Micro SD(TF) card slot up to 128GB |
| Interface | USB-TypeC, external expansion interface Pogo (USB, serial, IIC, power supply, etc.), 3.5mm headphone jack, charging base PogoPogo |
| Keypad | 12 buttons |
| Notification | Sound, vibration, LED prompt |
| Operating temperature | -20°C to +60°C |
| Storage temperature | -30°C to +80°C |
| Working Humidity | 5% to 95% |
| IP Class | IP65 |
| Drop test | 6 sides multiple drop from the height of 1 meters to the concrete floor |
| ESD | ±16kV Air Discharge, ±8kV Contact Discharge |
| Certificate | CCC, CTA |
| RFID (HF) | Supporting Protocol : ISO14443A/B, ISO15693, NFC reading distance: 0~5cm |
| RFID (UHF) | support ISO18000-6C protocol, tag reading speed>200/s, reading distance>5M |
| Barcode scanning Support code system | SD5670 compatible (Speedata Self-developed scanning engine) N6603 (1D&2D) :AZTEC, CODABAR, CODE11, CODE128, EAN128, CODE39, CODE49, CODE93, COMPOSITE, DATAMATRIX, EAN8, EAN13, INT25, MAXICODE, MICROPDF, PDF417, POSTNET, OCR, QR, RSS, UPCA, UPCE, ISBT, BPO, CANPOST, AUSPOST, IATA25, CODABLOCK, JAPOST, PLANET, DUTCHPOST, MSI, TLC39, TRIOPTIC, CODE32, STRT25 |
| PSAM card (smart encryption card) | supporting |
| High precision GPS positioning module | GPS+BD+GLONASS, reservation 8030 |
| Sensor | geomagnetism, acceleration light perception distance, berometer(optional), gyroscope(optional) |



Headquarters (Beijing) : 010-8234 6858

Add: Building 2, Zhiyuan Building, No. 28 Shangdi 6th Street,
Haidian District, Beijing

Shanghai office:

Add: Room 511, Building 31, No. 28, Lane 1333, Xinlong Road,
Minhang District, Shanghai

Branch Office(Shenzhen): 0755-8279 7385

Add: Room 609, Building D, Bantian International Center, No. 5,
Huancheng South Road, Bantian Street, Longgang District, Shenzhen, China

Branch Office(Dalian): 0411-8389 4339

Add: Room 208, No. 40, Ruifeng industrial area, Ganjingzi District, Dalian,
Liaoning Province, China

Speedata Solutions INC.

150 E Colorado Blvd,Suite 211,Pasadena,CA 91105



www.speedata.cn

marketing@speedatagroup.com