

Dashboard Release

Customers now can review their weekly, monthly and annual Portfolio and Project Performance. This will help bring visibility to various KPIs to support the value of switching to solar.

Portfolio centralization to quantify power usage, prices, renewable energy sources

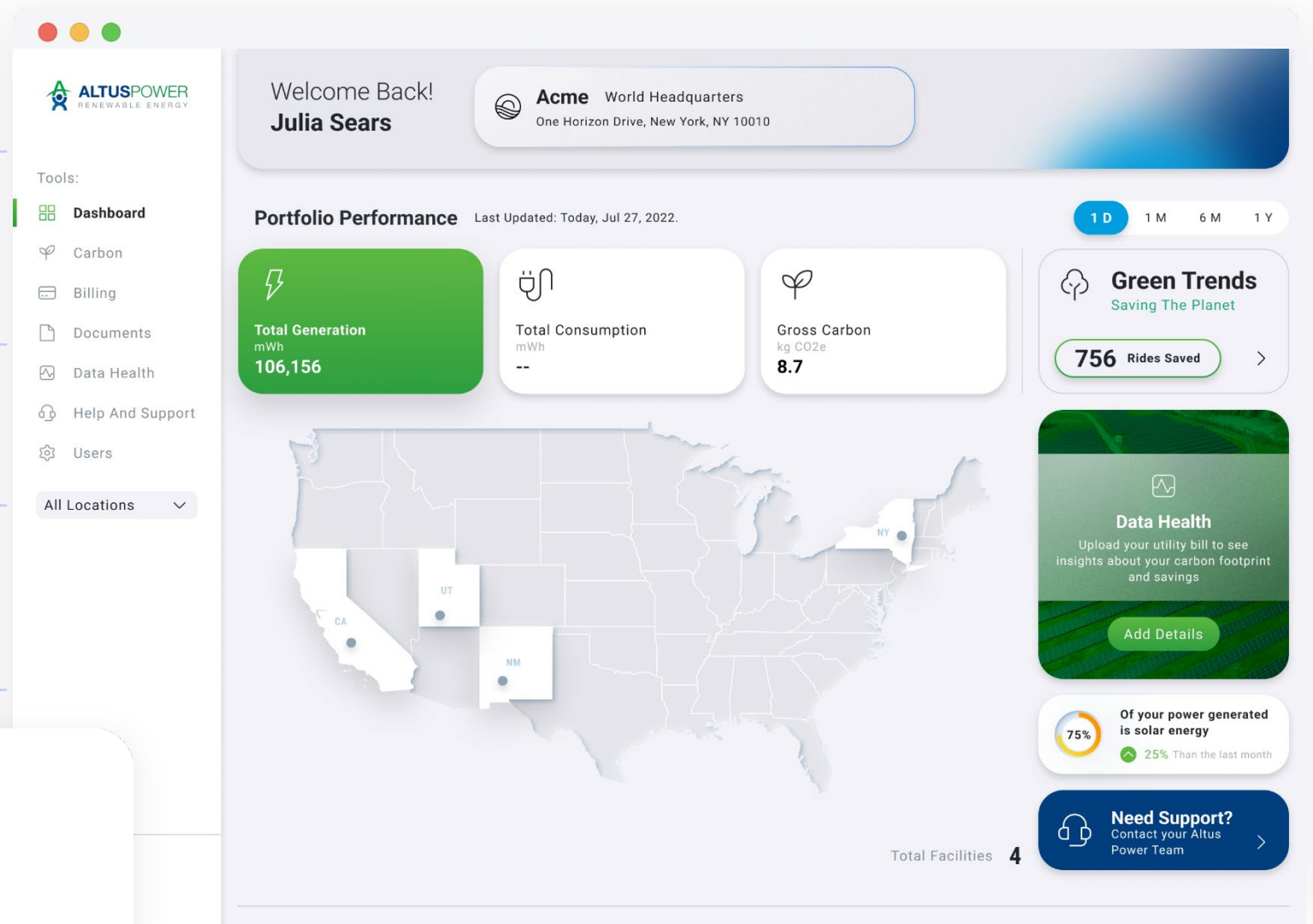
Geographic visibility of solar projects and power generation every 15 minutes.

Green Trends and quantifiable statistics to illustrate the planet benefits

Patent pending. United States Patent Application No. 18/128,096



Total Consumption
kWh
120.32



Carbon and Renewable Energy Credits

The objective here is to give visibility and access to becoming Carbon Neutral and enabling clients that fit your goals.

Improving Data Health allows you to connect directly to an available utility for real-time usage and updates or upload bills and enable our AI suite of tools to read and react to usage data from your bills or statements.

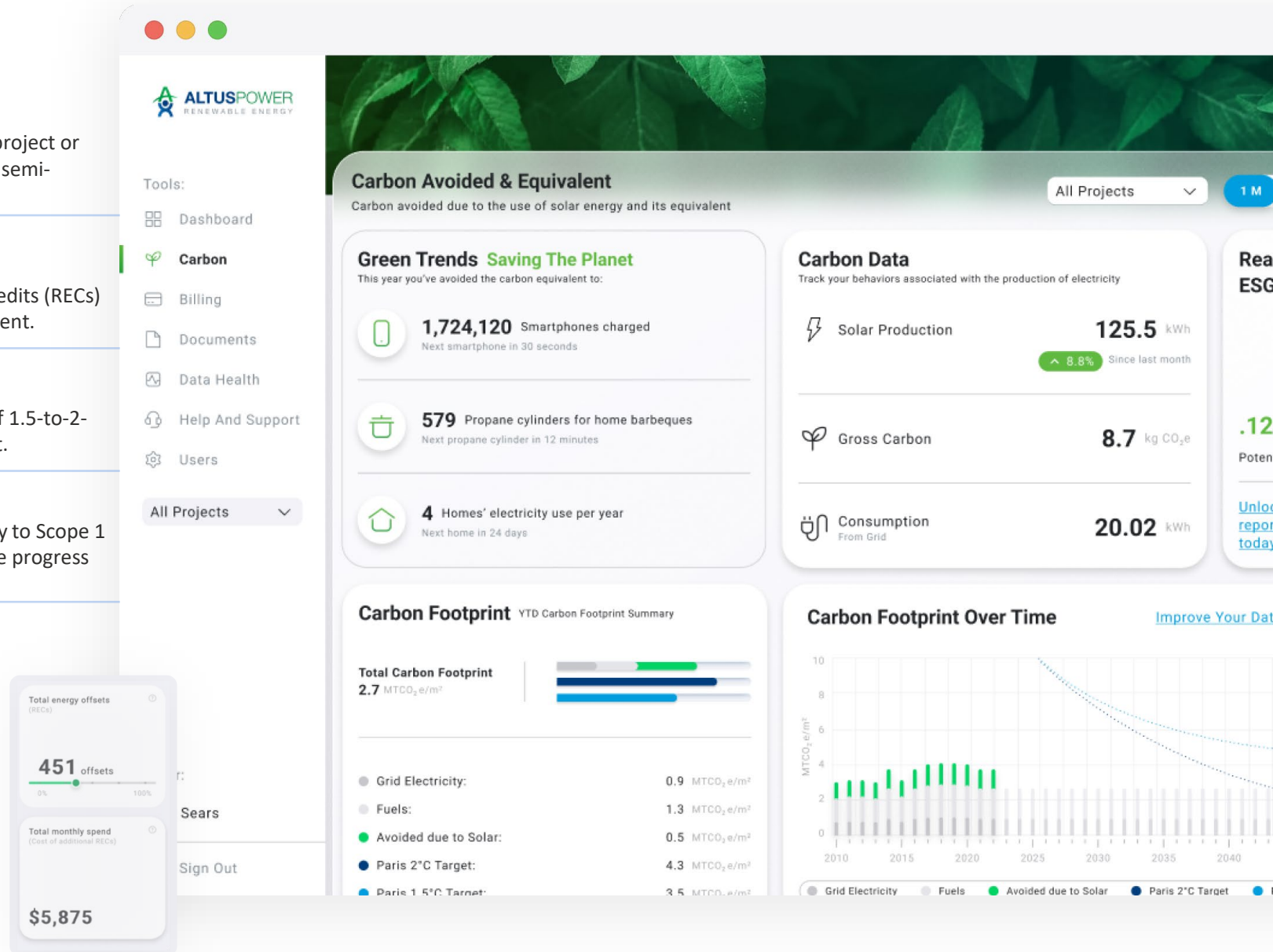
Reporting on fuels and electricity usage is the easiest step to track and make change.

Carbon Footprint by project or by portfolio monthly, semi-annually or annually.

Renewable Energy Credits (RECs) visibility and enablement.

Global Paris targets of 1.5-to-2-degree Celsius impact.

Green avoided overlay to Scope 1 and 2 Emissions to see progress and set future goals.



Billing and Income Centers

Billing Center helps our clients visualize their savings over time by making the switch to solar.

This provides a summary of bill history if a tenant or a summary of total dollars paid as income if a landowner.

Time range and custom time range options for billing.

Clear savings over time for management reporting.

Easy to download invoices and statements to PDF.

Custom search options.



Income from land lease
\$ **82,746**

