



WELLGRAB

DATA SHEET EXTERNAL LATCH

By allowing reliable disconnect of fishing strings or relocating the fish in the well, the electric release fishing tool is designed to improve and simplify fishing operations.

The required grapple type, either external or internal, can be easily assembled on the tool by only changing a few parts. Electrical disconnect can be activated at any time when required.

BENEFITS

- Prevents premature release of the fishing tool during fishing or retrieving
- 50% higher safe working loads than for standard pulling tools
- Digital, real-time communication with fishing tool
- Can accommodate mechanical release function as a backup
- Battery and timer will be available
- Interchangeable stand-off rings and bell guides
- Simple change-out grapples
- 5 ton capacity on release power
- Electrical release command
- Adjustable Reach
- Extended reach options available
- Bi-directional motor for grapple manipulation
- Fail-safe timer release device

APPLICATIONS

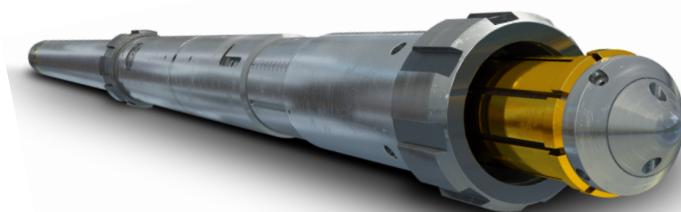
Retrieving plugs
Fishing operations
Relocating downhole assemblies

Ability to latch, release and then re-engage, without the need to trip out of hole to reset the tool

Keys or slips on the tool can be retracted to aid in engaging on or into a catch profile

Full tool string recovery by remote activation of the fail-safe timer release device, in the event of loss of communication to the ERFT

Ability to work BHA's hard to catch in or onto a profile, without the risk of prematurely releasing the tool



SPECIFICATIONS

IMPERIAL

METRIC

Length	7.1 ft	2,163 mm
Tool OD	3.622"	92 mm
Weight	154 lbs	70 kg
Completion ID	4,5" – 7" tbg	95.3 mm – 178 mm
Safe working load	120,000 lbs	54,400 kg
Grapple range	1.18" – 3.313"	29.9 mm – 84.2mm

